

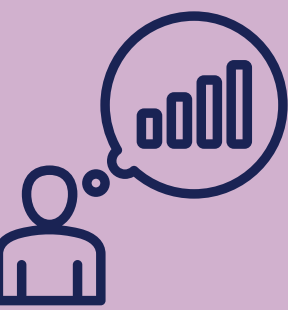
# Establishing a relationship

Have you been assigned a supervisor?  
Have you met your supervisor?



Schedule a meeting right at the start of the semester.

Bring and complete your official Letter of Understanding.



Discuss and clarify what your role is and the expectations.

Schedule consistent check-ins to keep up-to-date with each other.



Important issues you might want to discuss and/or clarify:

- ★ How do you work best?
- ★ What are you looking for out of this relationship?
- ★ What kind of feedback do they give?

**Tip:**  
This is a professional relationship which you are one half of; claim your agency.

Check out the Supervision workshops:

- Getting started with supervision
- Sustaining supervision
- Getting the best out your supervisor



This work is licensed under a Creative Commons Attribution-Non-Commercial 4.0 International License. Teaching and Learning Services (2021), McGill University.