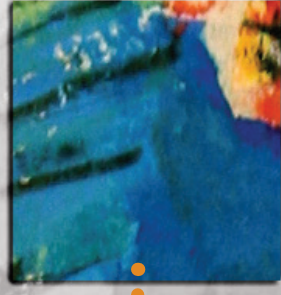


Recent years have seen a dramatic increase in the use of psychiatric medications among children, adolescents, and adults in many countries. Psychopharmaceuticals are big business and are at the centre of the globalization of psychiatry. The production of clinical evidence, the professional standards of practice, the conceptual models used to think about psychiatric disorders, and the experience of taking medication are all shaped by the interests of pharmaceutical companies and by wider social and cultural attitudes toward medication. This meeting brings together leading scholars from anthropology, sociology, history, and health sciences to examine the cultural shaping and consequences of the use of psychiatric medication. Sessions will address the history, and political economy of psychopharmacology, the production of professional knowledge and the uses of medication, popular attitudes toward medication, and phenomenological pharmacology.



Psychopharmacology in a Globalizing World:

The Social Lives of Psychiatric Medication

Featuring a screening and panel discussion of the film

Hofmann's Potion

Thursday, June 14, 2007, at 19h

All sessions are held in the auditorium of the
Institute of Community & Family Psychiatry
4333 Côte Ste-Catherine Rd., Montreal, QC

Division of Social
& Transcultural Psychiatry

McGill University

2007 Advanced Study Institute

June 14 & 15, 2007

call (514) 398-7302 or

use the application form on verso to register

8h30-9h	REGISTRATION
9h-9h30	WELCOME & INTRODUCTION
<i>From Amrita to Substance D: Politics, practice, and experience in the social life of psychiatric medication</i> Laurence J. Kirmayer , McGill University	
THE HISTORY AND POLITICAL ECONOMY OF PSYCHOPHARMACOLOGY AND PSYCHIATRIC SCIENCE	
9h30-10h	<i>Methods and madness: Severe mental illness in the age of psychopharmacology</i> Joel Braslow , University of California at Los Angeles
10h-10h30	<i>Psychopharmacology in the age of anxiety: The Miltown revolution in historical context</i> Andrea Tone , McGill University
10h30-11h	BREAK
11h-11h30	<i>Gender stereotypes in the diagnosis of depression: Systematic content analysis of medical records</i> Jonathan Metzl , University of Michigan
11h30-12h	<i>Cargo cult science: On the interaction between evidence, medicine, and commerce</i> David Healy , Cardiff University
12h-12h30	PANEL DISCUSSION Laurence J. Kirmayer (chair), Joel Braslow, David Healy, Jonathan Metzl, & Andrea Tone
12h30-14h	LUNCH

FROM POLITICS TO PRACTICE	
14h-14h30	<i>Partial truths and competing paradigms: Stakes in the administration of drug compliance in the treatment of ADHD</i> Kalman Applbaum , University of Wisconsin at Milwaukee
14h30-15h	<i>Pills that swallow policy: India's National Mental Health Program</i> Sumeet Jain & Sushrut Jadhav , University College London
15h-15h30	<i>Ways of distributing pills in India: The case of fluoxetine (Prozac)</i> Stefan Ecks , University of Edinburgh
15h30-16h	BREAK
16h-16h30	<i>Psychotropic medication use with children and adolescents: A comparative study</i> Vivianne Kovess , McGill University/Fondation MGEN
16h30-17h	<i>Edgy ethics and storied science: Marketing neuroscience as the truth of depression</i> Nathan Greenslit , Massachusetts Institute of Technology
17h-17h45	PANEL DISCUSSION Sushrut Jadhav (chair), Kalman Applbaum, Stefan Ecks, Sumeet Jain, & Vivianne Kovess
17h45-18h	<i>Launch of the Transcultural Psychiatry Festschrift for Raymond Prince</i>
18h-19h	RECEPTION AND POSTER SESSION
19h-21h	<i>Hoffman's Potion (FILM)</i> PANEL DISCUSSION

POPULAR AND PROFESSIONAL KNOWLEDGE AND THE USES OF MEDICATION	
9h-9h15	INTRODUCTION Cécile Rousseau , McGill University
9h15-9h45	<i>Ethnic medication: Towards a new scientific racism?</i> Sylvaine De Plaen , Hôpital Ste-Justine
9h45-10h15	<i>Therapeutic reasoning and the rationales underlying day-to-day psychotropic prescribing practices: Back to 19th century therapeutic relativism?</i> Johanne Collin , Université de Montréal
10h15-10h45	<i>Tense prescriptions: Doctor's knowledge and doubts regarding Alzheimer medications in Brazil</i> Annette Liebing , Université de Montréal
10h45-11h15	BREAK
11h15-11h45	<i>Scripting control: Aboriginal and mainstream Canadian understandings of "phamily life"</i> Michael Oldani , University of Wisconsin at Whitewater
11h45-12h15	PANEL DISCUSSION Cécile Rousseau (chair), Johanne Collin, Sylvaine De Plaen, Annette Liebing, & Michael Oldani
12h15-14h	LUNCH

PHENOMENOLOGICAL PHARMACOLOGY	
14h-14h30	<i>Uncertainty in an era of evidence-based practices: The ambiguous texture of medicines on a transcultural clinical scene</i> Ellen Corin, Cécile Rousseau, & Annie Gauthier , McGill University
14h30-15h	<i>Psychological ramifications of psychiatric medication in university students</i> Norman Hoffman , McGill University
15h-15h30	<i>Selfhood, psychopharmaceuticals, and society: Narratives of psychotropic medication use among adolescents, their parents, and physicians</i> Kelly McKinney , McGill University
15h30-16h	<i>Adolescent experience of psychotropic treatment</i> Jerry Floersch , Case Western Reserve University
16h-16h30	<i>The tenuous notion of specificity</i> Amir Raz , McGill University
16h30-17h	PANEL DISCUSSION Laurence J. Kirmayer (chair), Ellen Corin, Jerry Floersch, Norman Hoffman, Kelly McKinney, & Amir Raz
THIS CONFERENCE IS CME ACCREDITED FOR 18 STUDY CREDITS	

To register for the *ASI 2007: Psychopharmacology in a Globalizing World*, complete this form and send with your cheque for \$150.00 (\$75 for full-time students) payable to McGill University to: Summer Program/ASI 2007
Division of Social and Transcultural Psychiatry, McGill University
1033 Pine Ave. W. Montreal, QC H3A 1A1
tcpsych@mcgill.ca

Papers presented at the *2007 Advanced Study Institute* will appear in a special issue of *Transcultural Psychiatry*. For more information, please visit <http://tps.sagepub.com/>

Hofmann's POTION

directed by Connie Littlefield (2002)
Showing and Panel Discussion
Thursday, June 14th, 2007, at 7pm (19h)

Discovered in 1943 by Swiss chemist Albert Hofmann, D-lysergic acid diethylamide (LSD) was hailed as a powerful tool to treat alcoholism and drug addiction and to provide a window into schizophrenia and other mental illnesses. Much of that pioneering research was done by the team of Humphry Osmond, Abram Hoffer, and Duncan Blewett, all working in Saskatchewan.

While researchers were establishing the medical benefits of LSD, others - like author Aldous Huxley - promoted the drug as a powerful tool for mental exploration and self-understanding. At Harvard, Timothy Leary, Ralph Metzner, and Ram Dass (then known as Richard Alpert) became popular heroes after the university cancelled their research project into psychedelics.

Featuring interviews with many LSD pioneers, *Hofmann's Potion* is much more than a simple chronicle of the drug's early days. With its thoughtful interviews, beautiful music, and stunning cinematography, it is an invitation to look at LSD - and our world - with a more open, compassionate mind.

