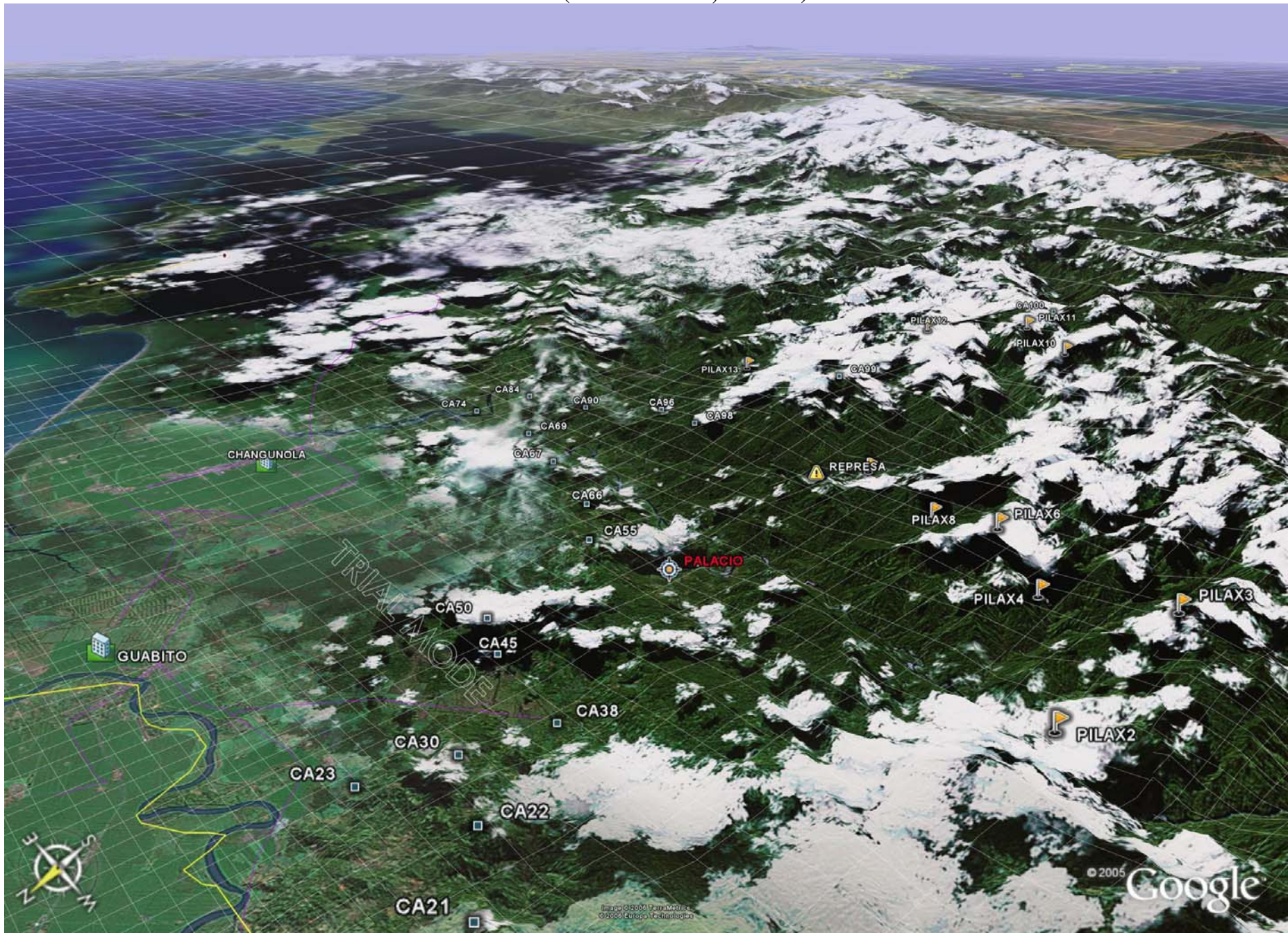
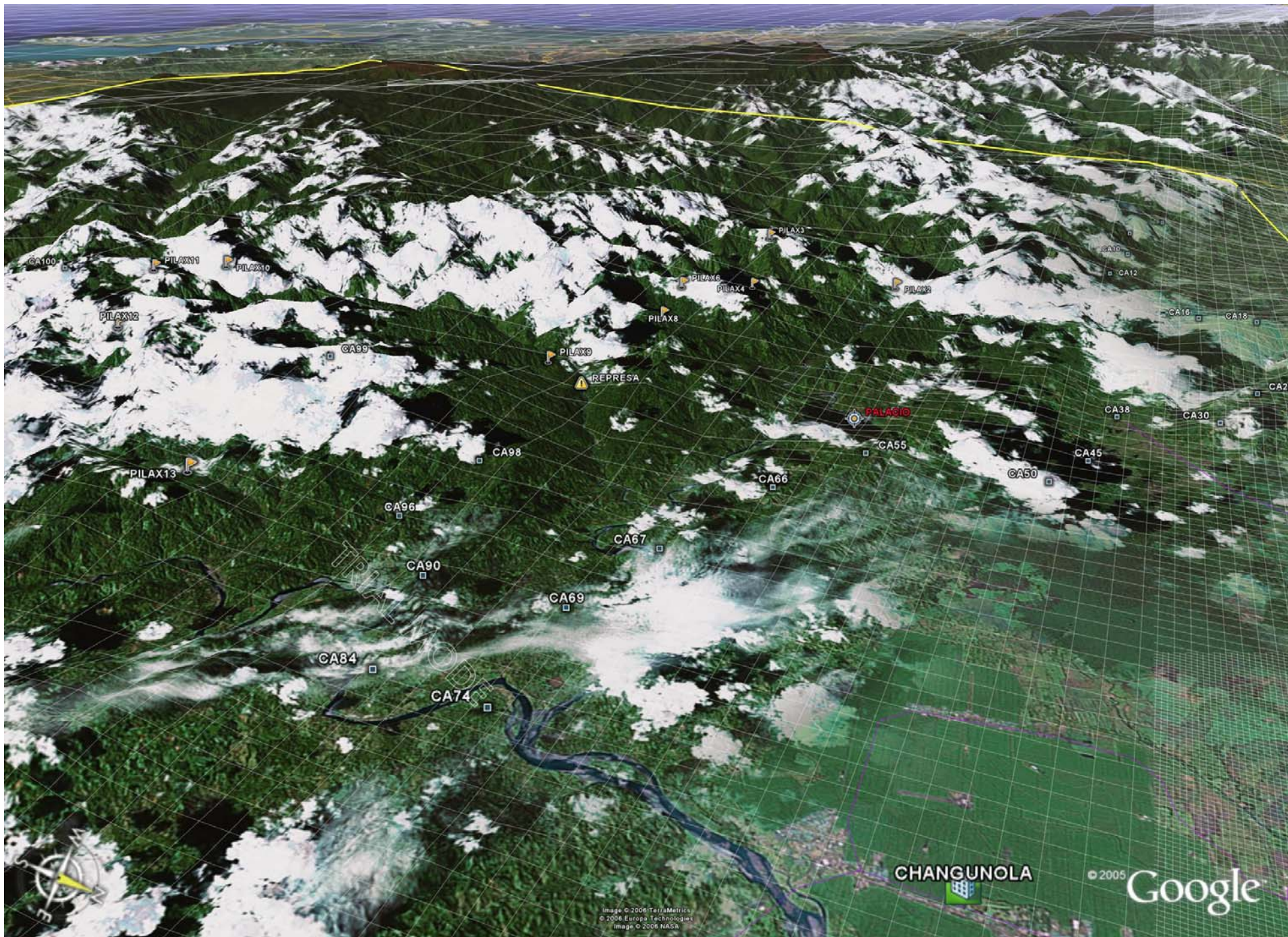
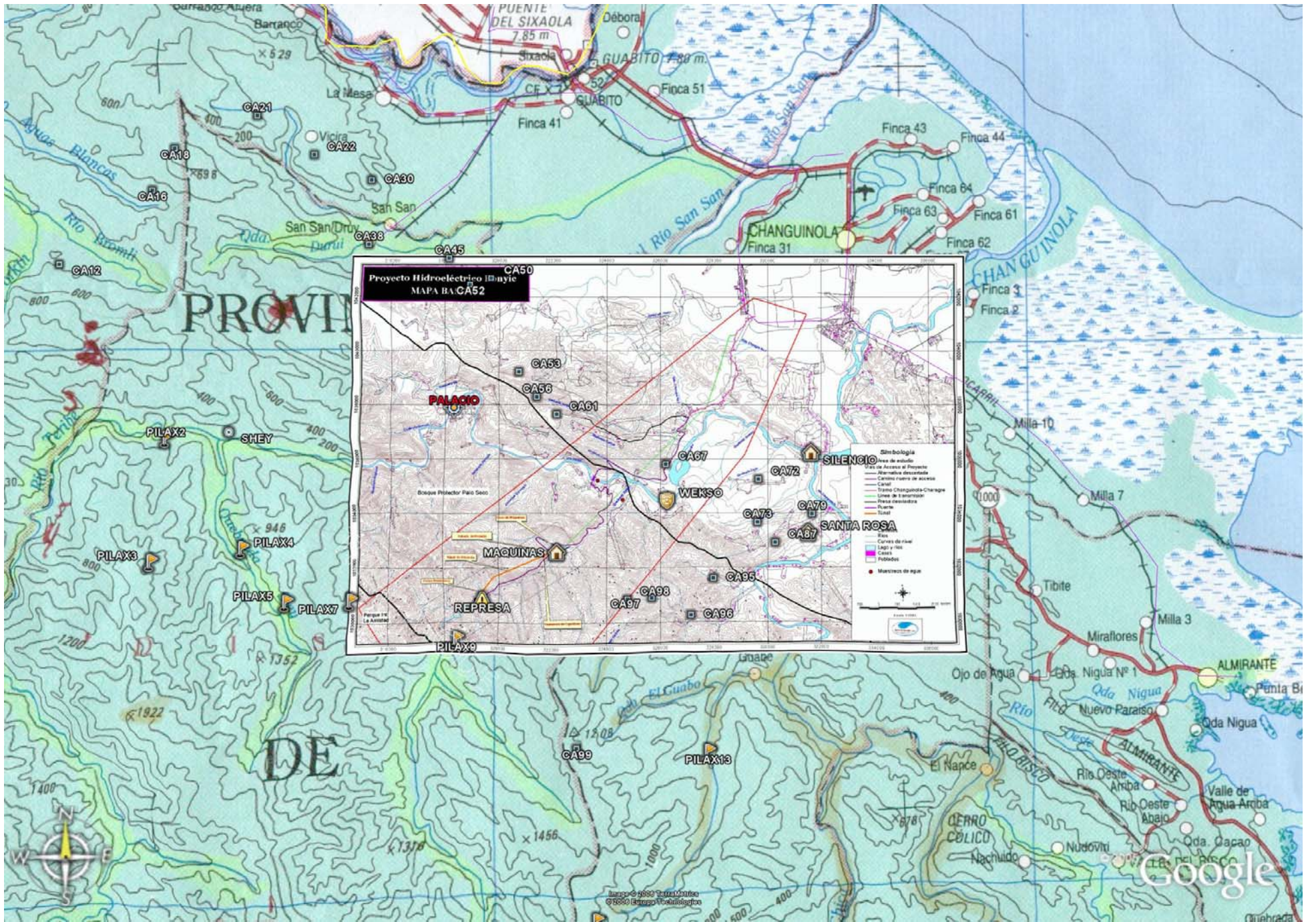


## Vista aérea de la propuesta Comarca Naso Tjër Di (Bocas del Toro, Panamá)







E NAD27 Can	058 - 6,9400000	E+01 - 3,7264640		<b>Comment</b>
				<b>Texto Único del Proyecto de Ley No.19</b>
COORDINATE SYS				<b>“Por la cual se crea la Comarca Naso “Tjer Di”</b>
LAT LON DMS				<b>4 de Mayo 2005</b>
<b>ID-----</b>	<b>Latitude</b>	<b>Longitude</b>	<b>Alt(m)</b>	
c1	N09°28'33,48"	W082°56'09,63"	0	
c2	N09°29'27,01"	W082°51'47,00"	0	
c3	N09°26'51,99"	W082°51'29,02"	480	
c4	N09°26'22,99"	W082°50'39,01"	800	
c5	N09°26'15,00"	W082°49'46,03"	660	
c6	N09°26'43,02"	W082°48'58,00"	0	
c7	N09°26'03,99"	W082°49'05,00"	600	
c8	N09°26'07,86"	W082°48'40,47"	600	
c9	N09°26'16,11"	W082°48'04,59"	0	
Ca10	N09°26'16,78"	W082°48'32,46"	0	
Ca100	N09°10'27,67"	W082°37'42,78"	0	Limite entre corregimientos El Empalme y Valle del Risco
Ca101	N08°58'14,22"	W082°57'42,53"	2634	Punta A
Ca11	N09°26'07,28"	W082°47'40,78"	0	
Ca12	N09°26'01,75"	W082°47'09,62"	0	
Ca13	N09°26'18,26"	W082°46'22,50"	0	
Ca14	N09°26'59,77"	W082°45'48,23"	0	
Ca15	N09°27'19,53"	W082°45'34,20"	0	
Ca16	N09°27'31,46"	W082°45'18,63"	356	
Ca17	N09°28'09,75"	W082°45'03,22"	0	
Ca18	N09°28'19,49"	W082°44'47,89"	0	Tronco Pilón
Ca19	N09°29'29,51"	W082°44'59,10"	0	
Ca20	N09°29'37,86"	W082°44'43,21"	0	Cabecera del rio San San
Ca21	N09°29'00,40"	W082°43'09,59"	531	
Ca22	N09°28'14,29"	W082°42'01,43"	388	
Ca23	N09°28'46,48"	W082°40'25,60"	60	
Ca24	N09°28'05,90"	W082°40'04,10"	60	Camino hacia Ganadera Bocas y El Arenal
Ca25	N09°27'47,98"	W082°40'07,29"	0	
Ca26	N09°27'38,34"	W082°39'41,84"	0	NO del Corral
Ca27	N09°27'34,18"	W082°39'59,55"	0	Predios de Julian y Ganadera Bocas
Ca28	N09°27'33,62"	W082°40'14,43"	0	Simón Smith

Ca29	N09°27'41,21"	W082°40'41,55"	0	Benito Castillo
Ca30	N09°27'44,77"	W082°40'52,48"	0	Benito Castillo
Ca31	N09°27'37,00"	W082°40'56,90"	0	
Ca32	N09°27'32,54"	W082°40'51,67"	0	Benito Castillo
Ca33	N09°27'25,34"	W082°40'44,84"	0	Simon Smith
Ca34	N09°27'20,64"	W082°40'41,25"	0	Simon Smith
Ca35	N09°27'18,47"	W082°40'31,73"	0	Maria Garcia
Ca36	N09°27'09,68"	W082°40'33,00"	0	
Ca37	N09°27'00,76"	W082°40'31,58"	0	cerca de Ganadera Bocas
Ca38	N09°26'28,38"	W082°40'57,75"	0	200 m del rio Dlundí, primer zarzo puente
Ca39	N09°26'16,36"	W082°40'12,42"	0	
Ca40	N09°26'13,39"	W082°40'00,67"	0	
Ca41	N09°26'13,36"	W082°39'45,56"	0	
Ca42	N09°26'11,26"	W082°39'36,73"	0	
Ca43	N09°26'11,00"	W082°39'35,81"	0	
Ca44	N09°26'06,80"	W082°39'21,40"	0	
Ca45	N09°26'11,70"	W082°39'19,23"	0	
Ca46	N09°26'08,96"	W082°39'11,54"	0	
Ca47	N09°26'03,49"	W082°39'13,52"	0	
Ca48	N09°26'01,07"	W082°39'00,46"	0	
Ca49	N09°25'58,09"	W082°38'51,96"	0	
Ca50	N09°25'47,46"	W082°38'28,08"	0	Camino Real entre Tigra y La Mona
Ca51	N09°25'39,75"	W082°38'40,63"	0	Predio de Venancio Castillo
Ca52	N09°25'39,69"	W082°38'53,70"	0	
Ca53	N09°23'53,69"	W082°37'53,42"	0	Predios de los Ngobes de San San Mona: Henri Becker, Salomón Palacio, Manuel Castillo, Lorenzo Castillo, Ernesto Castillo, Federico Castillo, Manuel Morales, Martin Abrego
Ca54	N09°23'46,52"	W082°37'54,50"	0	Cedral
Ca55	N09°23'36,33"	W082°37'56,06"	0	Placa Monumental
Ca56	N09°23'23,42"	W082°37'31,55"	0	Suroeste de finca Gestrudes Buruca
Ca57	N09°23'15,78"	W082°37'36,00"	0	Gstrudes Buruca
Ca58	N09°23'13,98"	W082°37'32,29"	0	Camino Real de Kui King a Charagre
Ca59	N09°23'08,18"	W082°37'24,79"	0	FILO de Yorkin
Ca60	N09°23'07,52"	W082°37'14,23"	0	

Ca61	N09°23'02,44"	W082°37'07,33"	0	
Ca62	N09°23'00,03"	W082°36'59,19"	0	
Ca63	N09°22'57,29"	W082°37'01,96"	0	Predios de BDA
Ca64	N09°22'50,90"	W082°37'11,04"	0	
Ca65	N09°22'49,46"	W082°36'59,04"	0	Cabecera de quebrada Carbón
Ca66	N09°22'44,95"	W082°36'46,76"	0	
Ca67	N09°22'02,30"	W082°34'54,54"	0	
Ca68	N09°21'37,69"	W082°34'40,27"	0	Rio Teribe / Camino Real, punto Arqueológico Sopwkoshko (Soposo)
Ca69	N09°21'35,26"	W082°33'31,40"	0	
Ca70	N09°21'31,22"	W082°33'40,04"	0	
Ca71	N09°21'38,12"	W082°33'24,34"	0	Camino Real entre Soposo y El Silencio
Ca72	N09°21'44,28"	W082°33'01,29"	0	
Ca73	N09°20'52,45"	W082°33'02,54"	0	Brazo de quebrada Sodi, predios de Zaida Marrugo y Max Ordoñez
Ca74	N09°21'39,02"	W082°31'50,31"	0	Santa Rosa / cruzando el Changuinola
Ca75	N09°21'21,31"	W082°31'34,17"	0	
Ca76	N09°21'13,65"	W082°31'44,33"	0	Rio Changuinola
Ca77	N09°21'10,96"	W082°31'49,60"	0	
Ca78	N09°21'09,00"	W082°31'51,39"	0	Camino a Bokeshko (Boquisco)
Ca79	N09°21'02,37"	W082°31'55,62"	0	
Ca80	N09°20'55,33"	W082°31'50,19"	0	
Ca81	N09°20'46,33"	W082°31'46,28"	0	
Ca82	N09°20'42,11"	W082°31'43,67"	0	Suroeste del camino a Boquisco
Ca83	N09°20'35,50"	W082°31'51,44"	0	
Ca84	N09°20'24,13"	W082°31'53,26"	0	
Ca85	N09°20'30,27"	W082°32'13,21"	0	
Ca86	N09°20'33,07"	W082°32'33,84"	0	Arbol de Bongo
Ca87	N09°20'28,29"	W082°32'41,13"	0	
Ca88	N09°20'19,83"	W082°32'48,40"	0	
Ca89	N09°20'09,30"	W082°32'58,02"	0	
Ca90	N09°20'02,87"	W082°33'18,01"	0	
Ca91	N09°20'07,16"	W082°33'25,51"	0	
Ca92	N09°20'09,16"	W082°33'29,68"	0	
Ca93	N09°20'11,60"	W082°33'38,40"	0	
Ca94	N09°20'10,55"	W082°34'02,62"	0	
Ca95	N09°19'44,76"	W082°33'56,24"	0	Quebrada La Mina
Ca96	N09°19'00,60"	W082°34'23,64"	0	Quebrada Ushiglo diwa
Ca97	N09°19'21,55"	W082°35'11,58"	0	

Ca98	N09°19'19,79"	W082°35'41,06"	0	
Ca99	N09°16'25,66"	W082°36'41,45"	1208	Estacion geodésica "Juabo"
Ca999	N09°28'33,48"	W082°56'09,63"	0	Inicio