



Welcome Home!

Dinner Information

A light dinner will be served at a cost of \$12 per person (payment accepted at the door only).

RSVP Information

Kindly send your RSVP to Yong Hong Feng at 514-398-2030 or yong.feng@mcgill.ca by Friday, October 5th, 2012.

Location

McGill University, School of Social Work
Wilson Hall, 3506 University Street
Montreal, Quebec H3A 2A7
www.mcgill.ca/socialwork/



School of Social Work Alumni Homecoming & Networking Dinner 2012

*The Social Work Association of
Graduate Students Presents:*

**Being the Change You
Want to See in the
World: Four Doctoral
Students Translating
Research to Practice**

*October 11th, 2012 at 5:15 PM
Wilson Hall, Wendy Patrick Room*

Program

Being the change you want to see in the world: Four doctoral students translating research to practice

Over the past five years, the doctoral program of McGill University, School of Social Work has grown in size and has attracted talented emerging scholars from around the world preparing them for academic research and teaching careers.

The 2012 Homecoming Lecture will highlight the work of four exceptional social work doctoral students whose work spans a diversity of topics and innovative research methodologies. These students will demonstrate how evidence-based research can effectively impact programs and policies.

It is with great pleasure that the McGill Social Work Association of Graduate Students (SWAGS) invites their esteemed colleagues and friends to share their inspiring work with you.

Talent

Bree Akesson

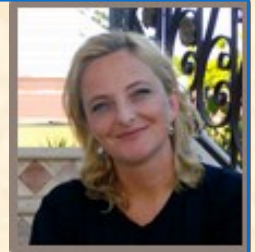
Entering family spaces: Lessons learned from place-based research with young children and their families affected by political violence



Bree Akesson has more than a decade of experience working as a practitioner and researcher with children, families, and communities affected by crisis. She is a recipient of the Vanier Canada Graduate Scholarship in recognition of her doctoral work exploring the socio-spatial implications of political violence on children and their families.

Kim Coleman

Art for *Our* Sake: Understanding the Place of the Arts in Social Work Theory, Practice & Research



Kim Coleman is an art therapist and social worker with expertise in trauma and the healing nature of art. Her research focuses on promoting the arts within social work theory, research, and practice with a particular interest in examining how the social impact of the arts may contribute to prevention efforts and inform policy strategies.



Tonino Esposito

The placement trajectories of children in the Quebec child protection system

Tonino Esposito is the research coordinator of the Centre for Research on Children and Families at McGill University. He has spent a number of years as a child welfare worker and therapeutic social worker at the Shriners Hospital. Tonino's principal areas of research center largely on the impact of placement for maltreated children in out-of-home care. He is also interested in exploring evidence of service effectiveness in child welfare.

Edward Ou Jin Lee

Speak Out! The power of community grounded research as policy advocacy



Edward Ou Jin Lee is a recipient of Vanier Canada Graduate Scholarship. His doctoral research combines participatory and ethnographic methodologies, in conjunction with critical race feminist theories. Ed's research focuses on the social organization of queer migration, especially the experiences of queer migrants with precarious status. As a scholar-activist, Ed is also involved in an LGBTQ newcomer community organization in Montreal as well as the research coordinator for the *Speak Out! LGBTQ refugee research project*.