

**JOINT BOARD / SENATE
MEETING: 26 OCTOBER 2009**



Are we who we think we are ?

INTRODUCTION



To answer this question we need to remind ourselves of our mission.

We also need to compare ourselves to other universities.

INTRODUCTION

McGILL'S MISSION



We are a research-intensive, student-centred university, with a commitment to excellence judged against the highest international standards, and an enduring sense of public purpose.

INTRODUCTION

BENCHMARKING MCGILL



The **G13** is a consortium consisting of 13 research intensive Canadian universities whose membership is determined by:

- ✓ Peer-adjudicated federal research grants
- ✓ Ph.D. degrees awarded

INTRODUCTION

BENCHMARKING MCGILL



The list of G13 Institutions:

- University of Alberta
- University of British Columbia
- University of Calgary
- Dalhousie University
- Université Laval
- **McGill University**
- McMaster University
- Université de Montréal
- University of Ottawa
- Queen's University
- University of Toronto
- University of Waterloo
- University of Western Ontario

OVERVIEW



1. Part I: Research
2. Part II: Students
3. Part III: International Standards
4. Part IV: Society
5. Conclusion

Parts I - IV will each be followed by a discussion period.



Part I:

RESEARCH

PART I: RESEARCH McGILL'S MISSION



We are a research-intensive, student-centred university, with a commitment to excellence judged against the highest international standards, and an enduring sense of public purpose.

BENCHMARKING MCGILL

CAUBO Data



The Canadian Association of University Business Officers (CAUBO) is a widely recognized source of critical information, strategic advice and practical support.

HOW TO ANSWER THE QUESTIONS



Answer the questions by clicking the number corresponding to McGill's rank among the G13 (1 is the highest).

PART I: RESEARCH

QUESTION 1.1

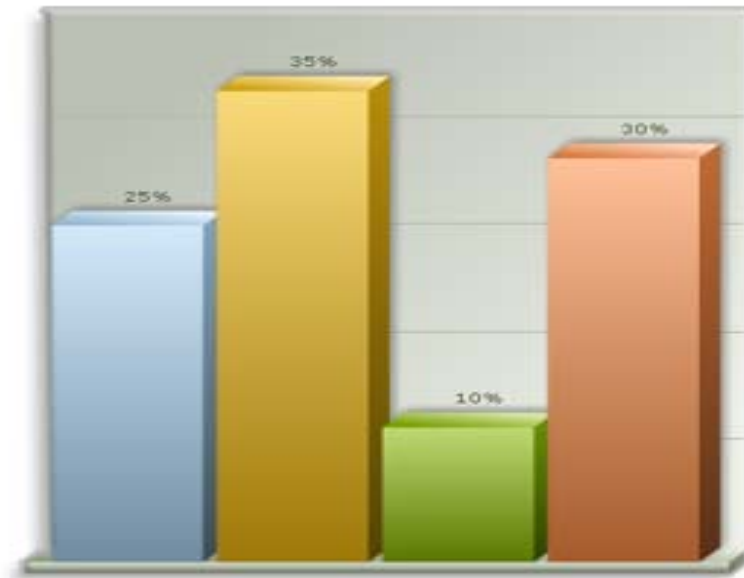


Where do you think McGill ranks among the G13
on average total research income*?

* Data used = financial years 2006, 2007 & 2008

G13: Average total research income

1. Rank 1st
2. Rank 2nd
3. Rank 3rd
4. Rank 4th
5. Rank 5th
6. Rank 6th
7. Rank 7th
8. Rank 8th
9. Rank 9th
10. Rank 10th-13th



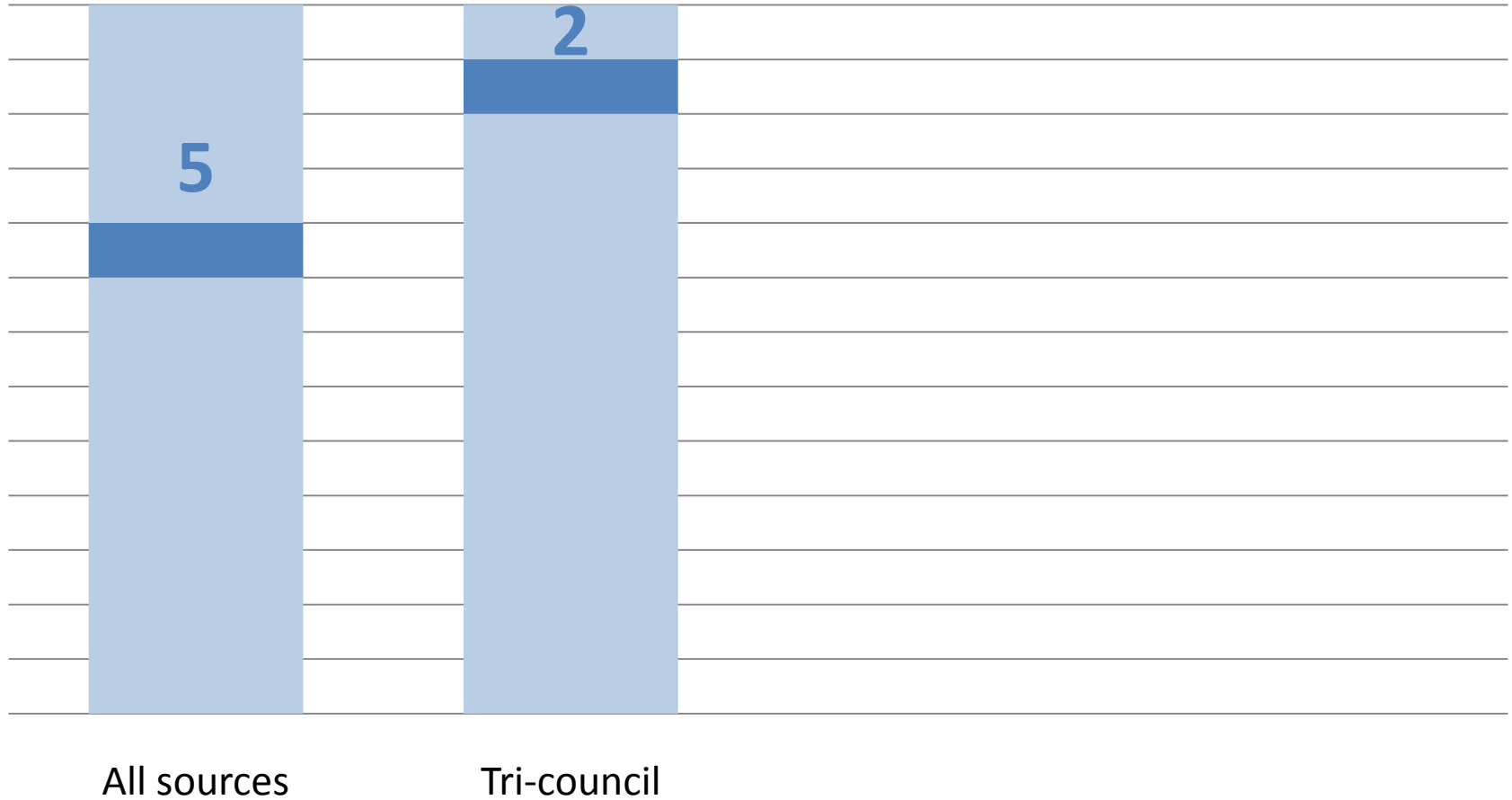
3D
Column Chart

Q1.1: RESEARCH INCOME

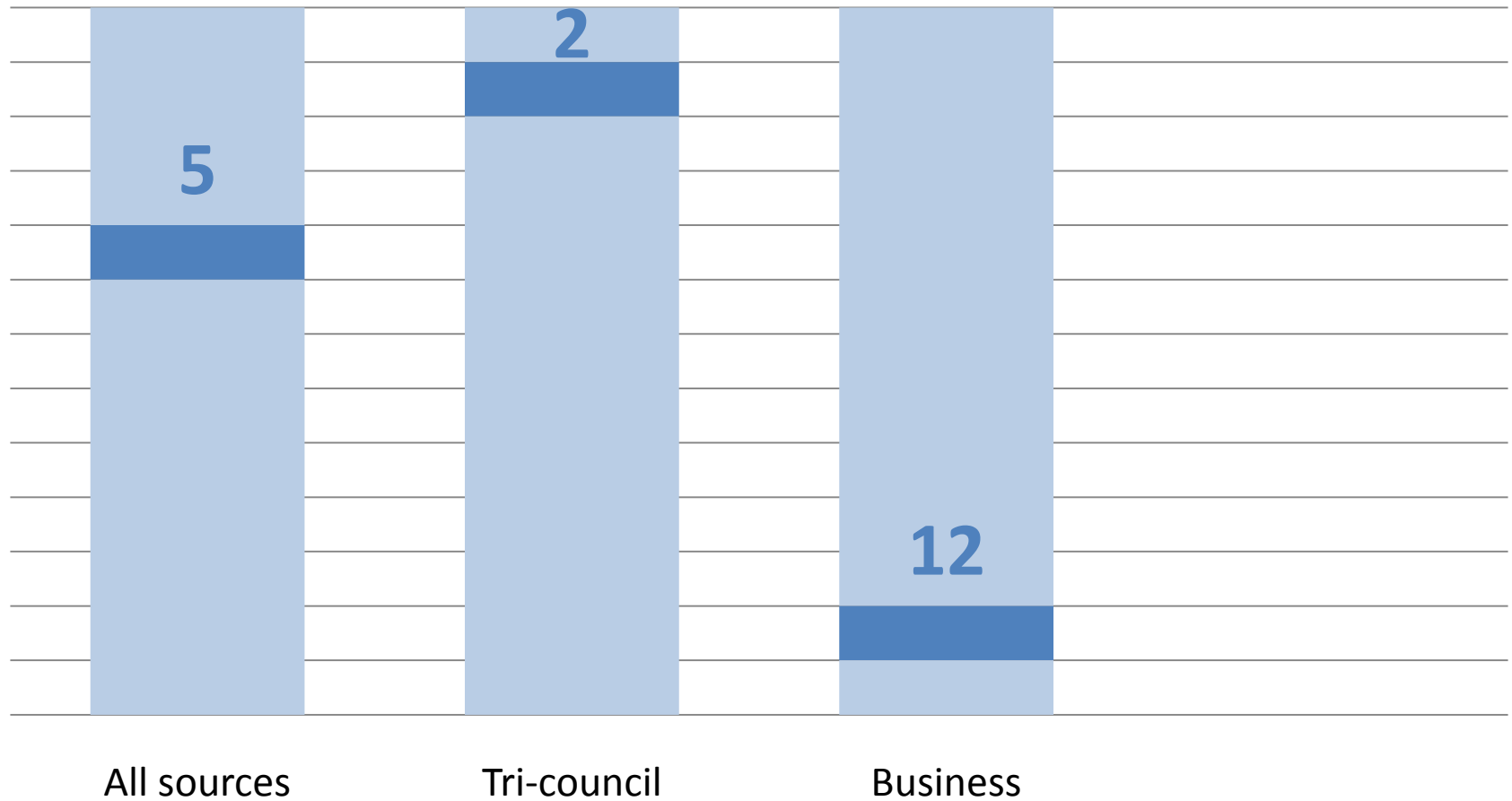


All sources

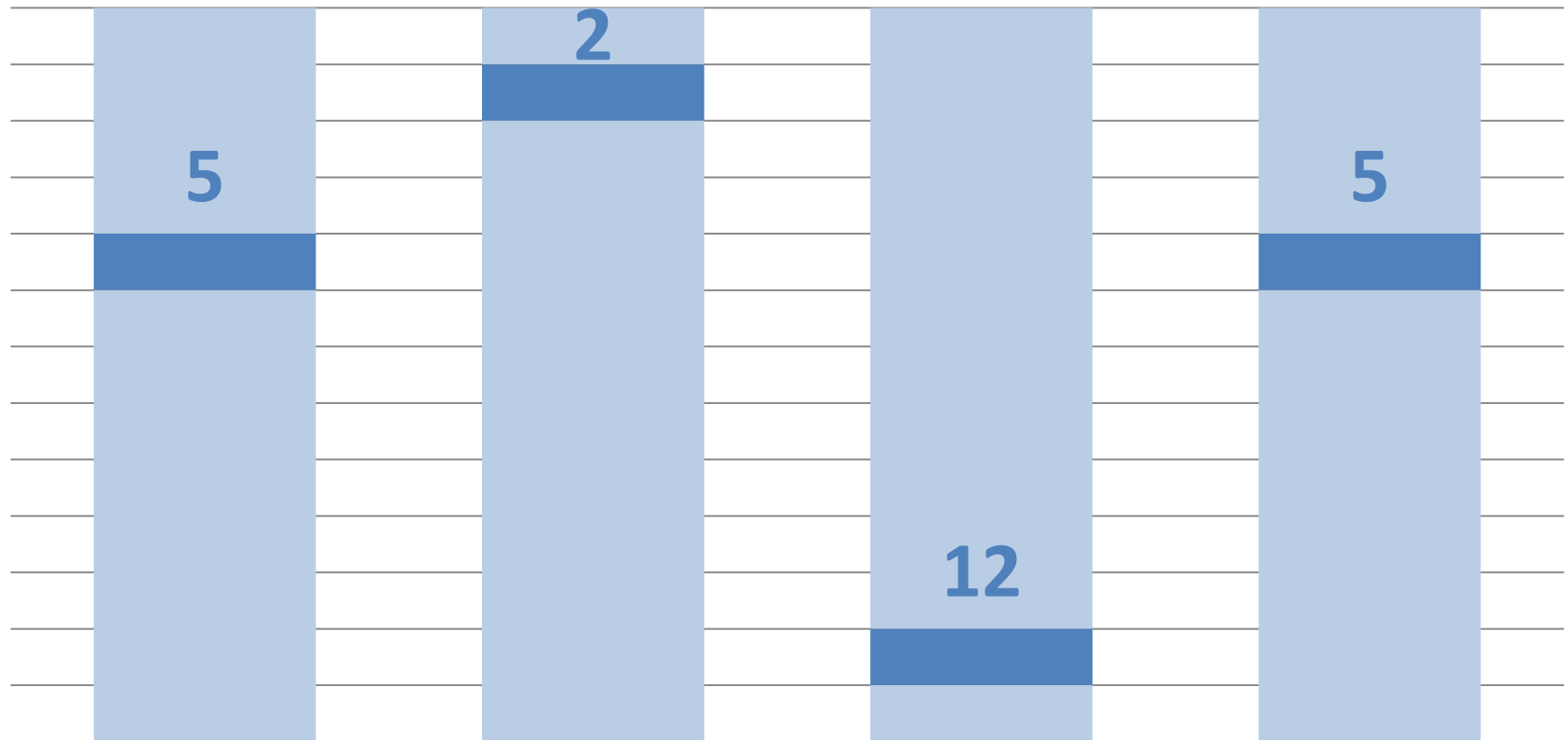
Q1.1: RESEARCH INCOME



Q1.1: RESEARCH INCOME



Q1.1: RESEARCH INCOME



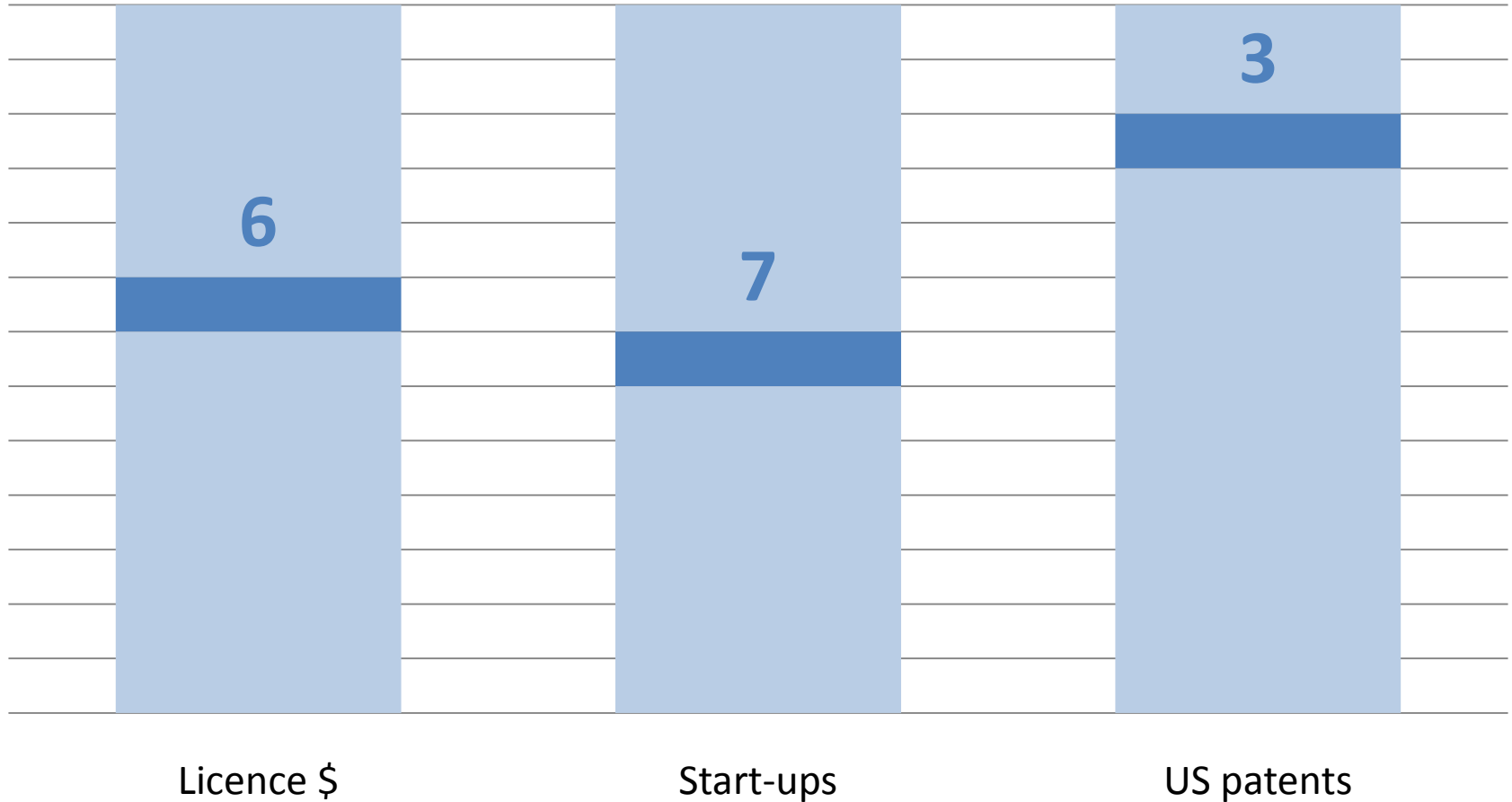
All sources

Tri-council

Business

Foreign

TECHNOLOGY TRANSFER



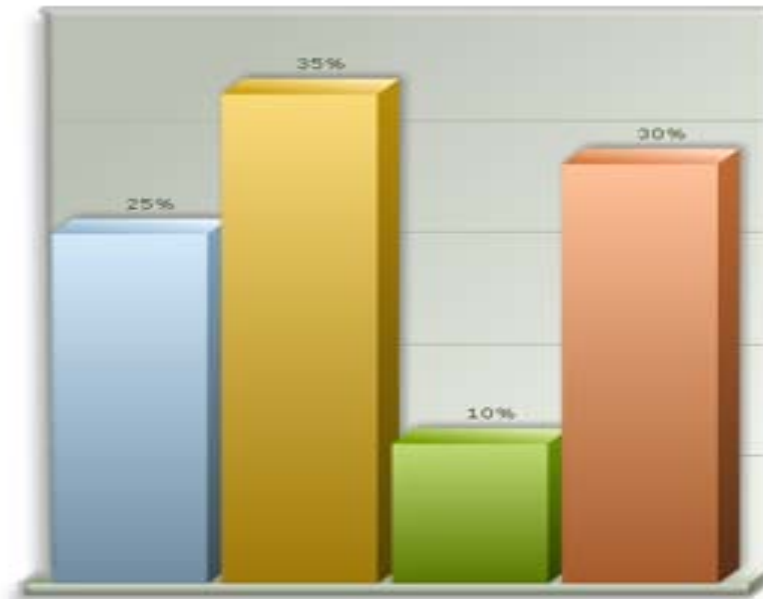
PART I: RESEARCH QUESTION 1.3



Where do you think McGill ranks among the G13 on **the relative impact of its research publications?**

G13: Relative impact of research publications

1. 1st
2. 2nd
3. 3rd
4. 4th
5. 5th
6. 6th
7. 7th
8. 8th
9. 9th
10. 10th-13th



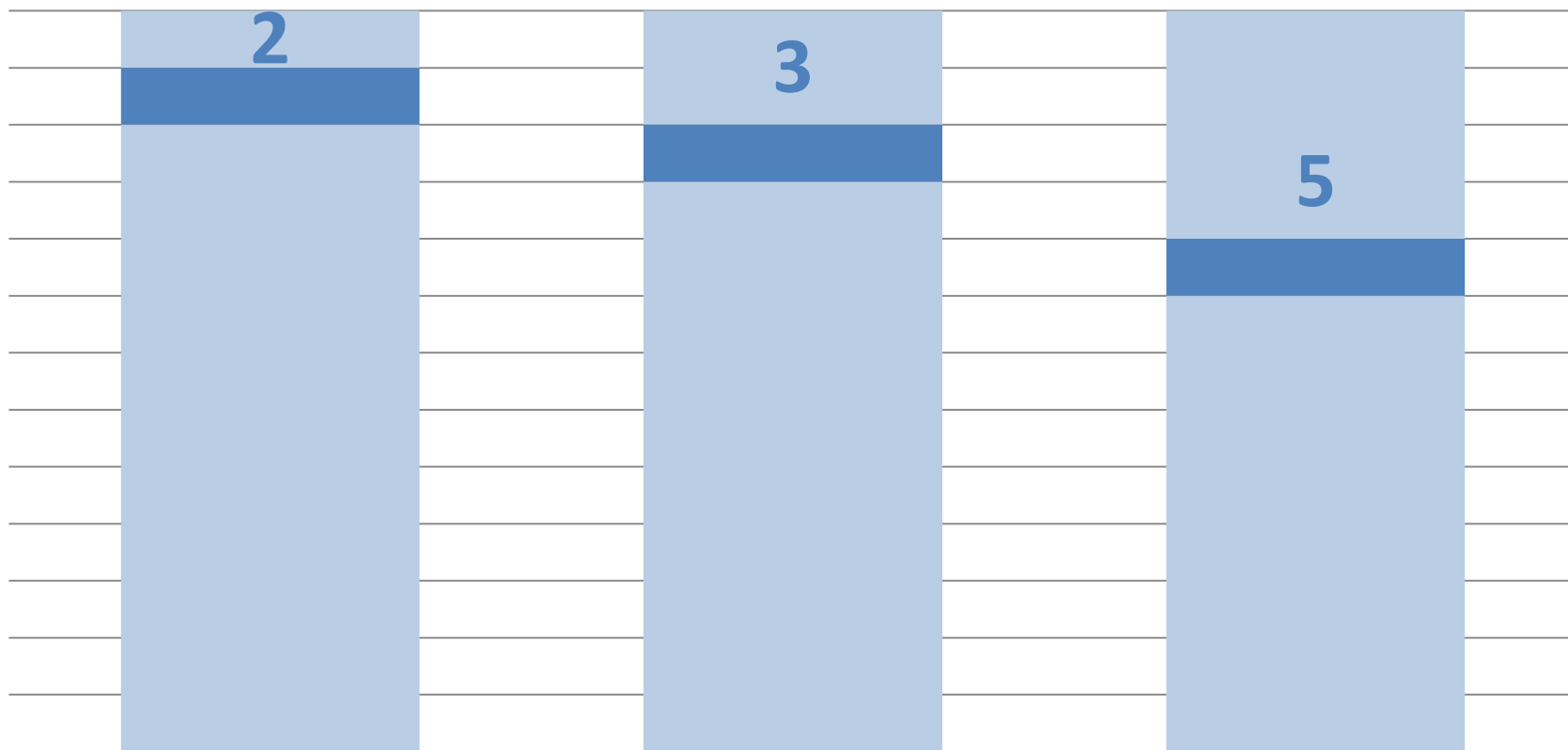
3D
Column Chart

Q1.3: PUBLICATIONS



Relative impact

Q1.3: PUBLICATIONS



Relative impact

NSE publications

SSH publications

PART I: RESEARCH McGILL'S MISSION



We are a research-intensive, student-centred university, with a commitment to excellence judged against the highest international standards, and an enduring sense of public purpose.

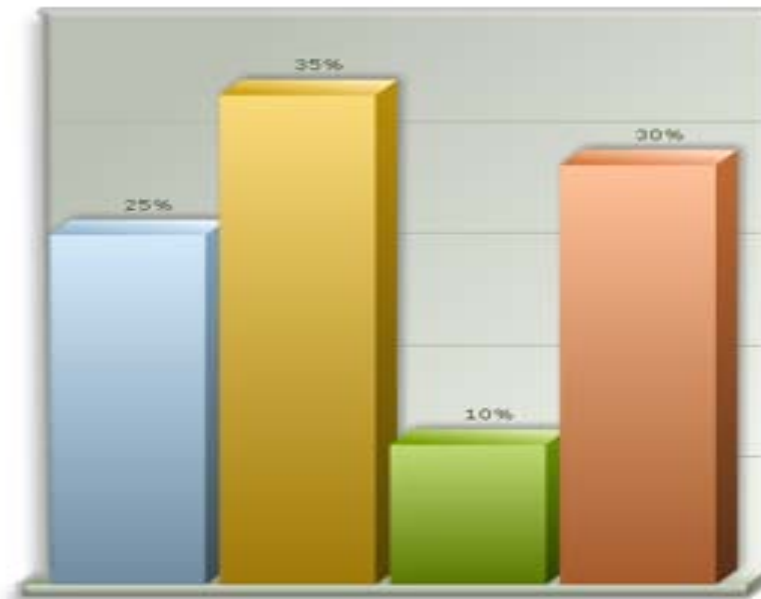
PART I: RESEARCH QUESTION 1.4



Where do you think McGill ranks among the G13 on **the total number of full-time professorial staff?**

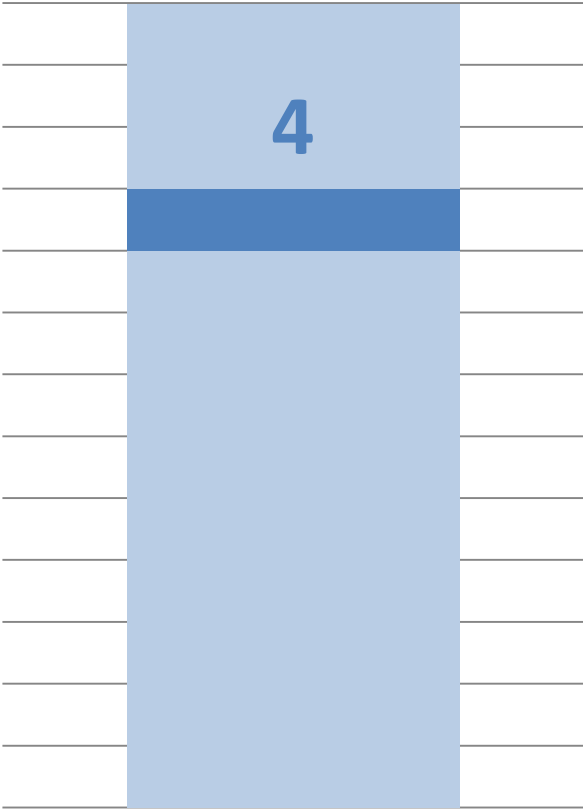
G13: Total number of full-time professorial staff

1. 1st
2. 2nd
3. 3rd
4. 4th
5. 5th
6. 6th
7. 7th
8. 8th
9. 9th
10. 10th-13th



3D
Column Chart

Q1.4: FULL-TIME PROFESSORIAL STAFF (FTPS)



Full-Time Professorial Staff

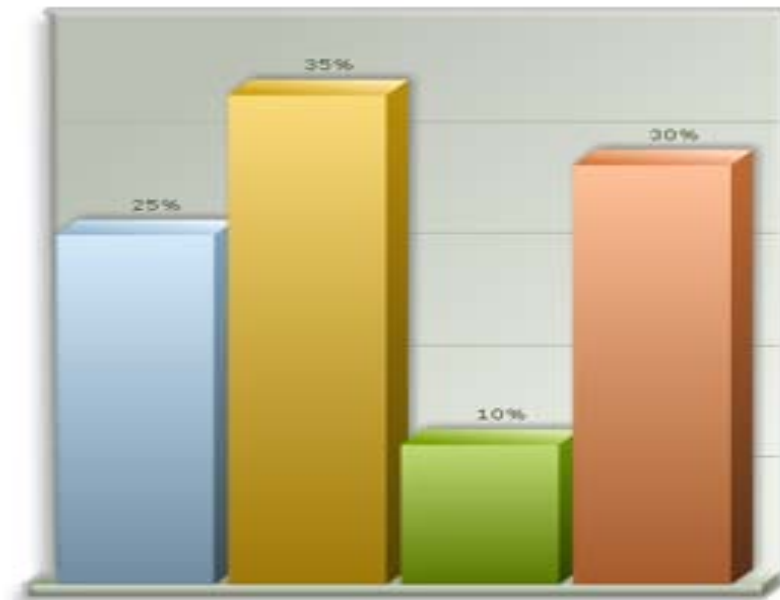
PART I: RESEARCH QUESTION 1.5



Where do you think McGill ranks among the G13 on **total research intensity (\$ per full-time professorial staff)**?

G13: Total research intensity (\$ per full-time professorial staff)?

1. 1st
2. 2nd
3. 3rd
4. 4th
5. 5th
6. 6th
7. 7th
8. 8th
9. 9th
10. 10th-13th



3D
Column Chart

Q1.5: RESEARCH INCOME (INTENSITY)



All sources
(\$/FTPS)

 Research  Research Intensity

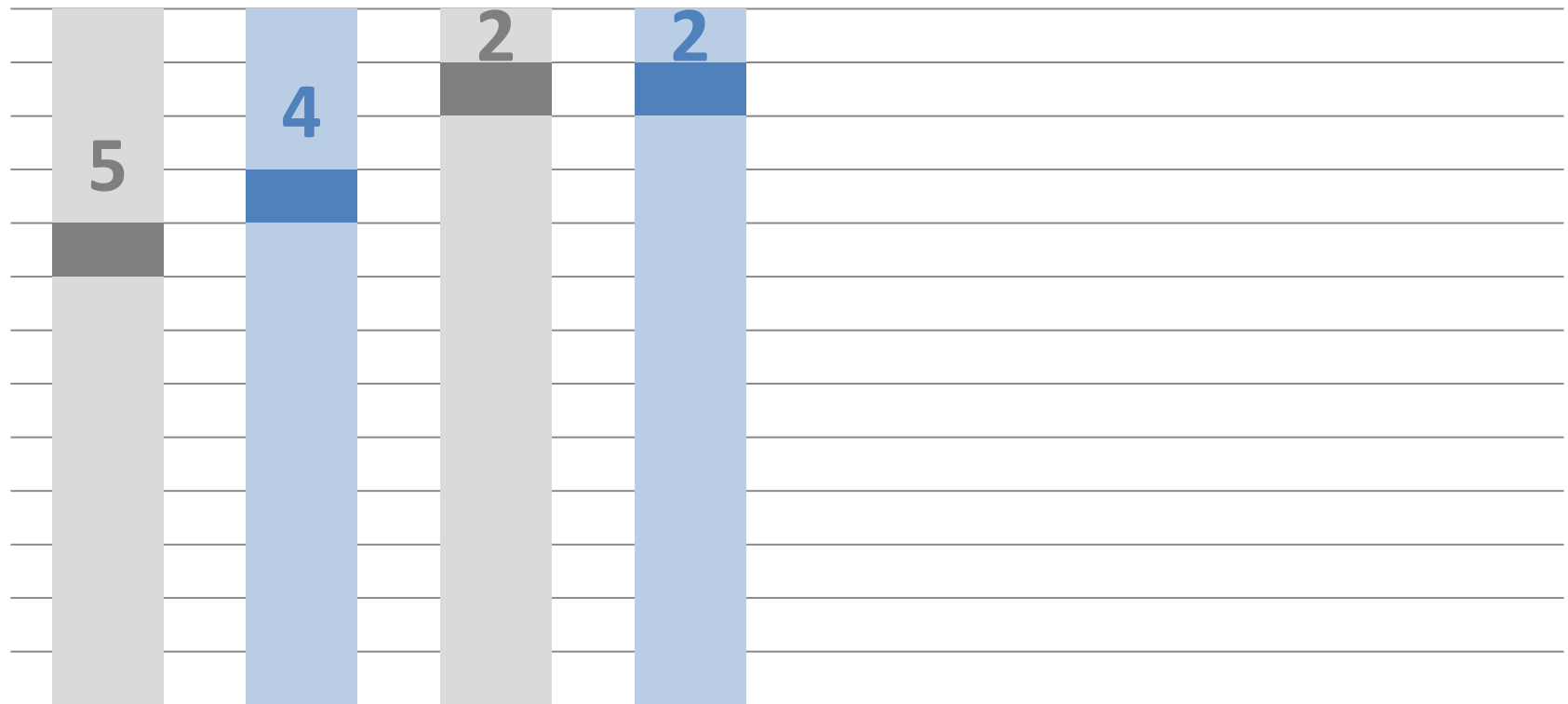
Q1.5: RESEARCH INCOME (INTENSITY)



All sources
(\$/FTPS)

 Research  Research Intensity

Q1.5: RESEARCH INCOME (INTENSITY)

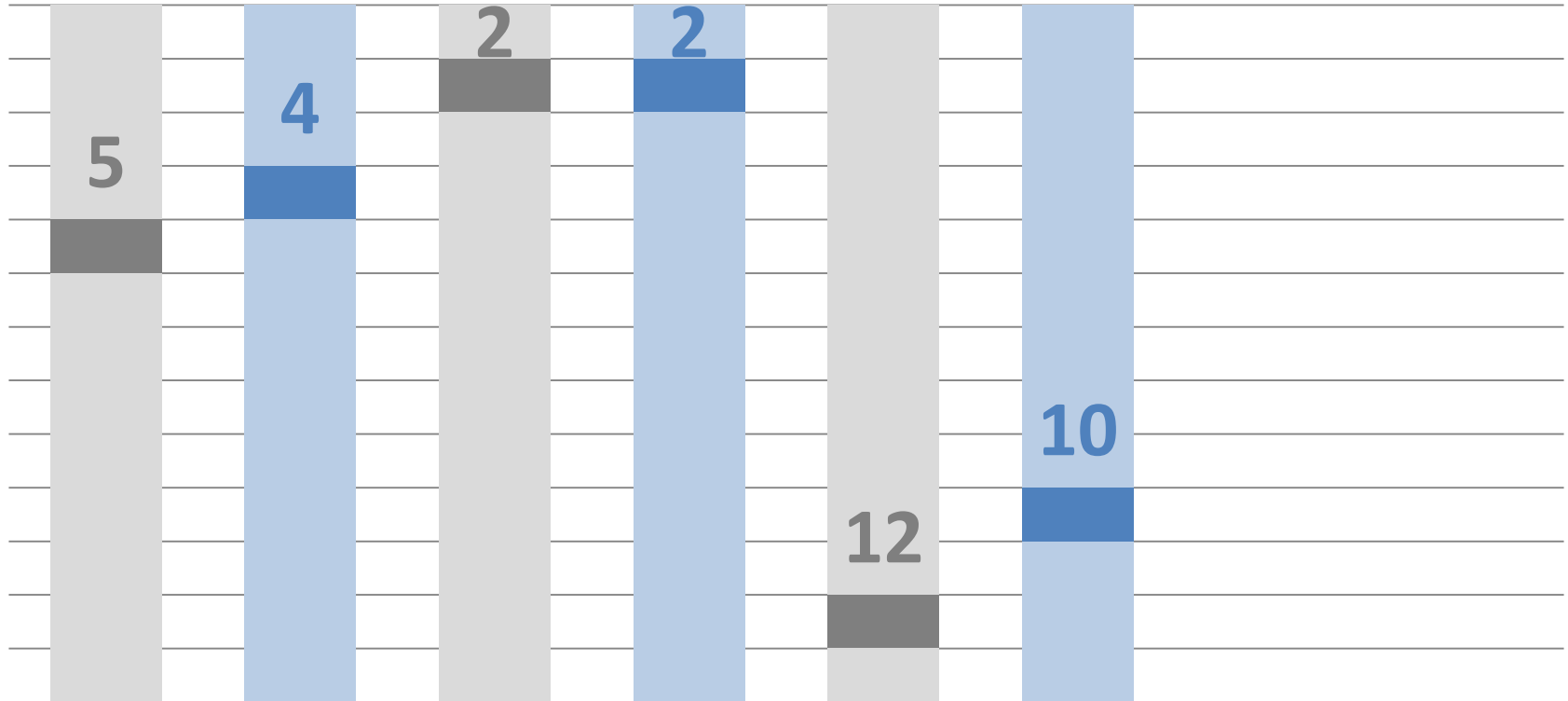


All sources
(\$/FTPS)

Tri-council
(\$/FTPS)

 Research  Research Intensity

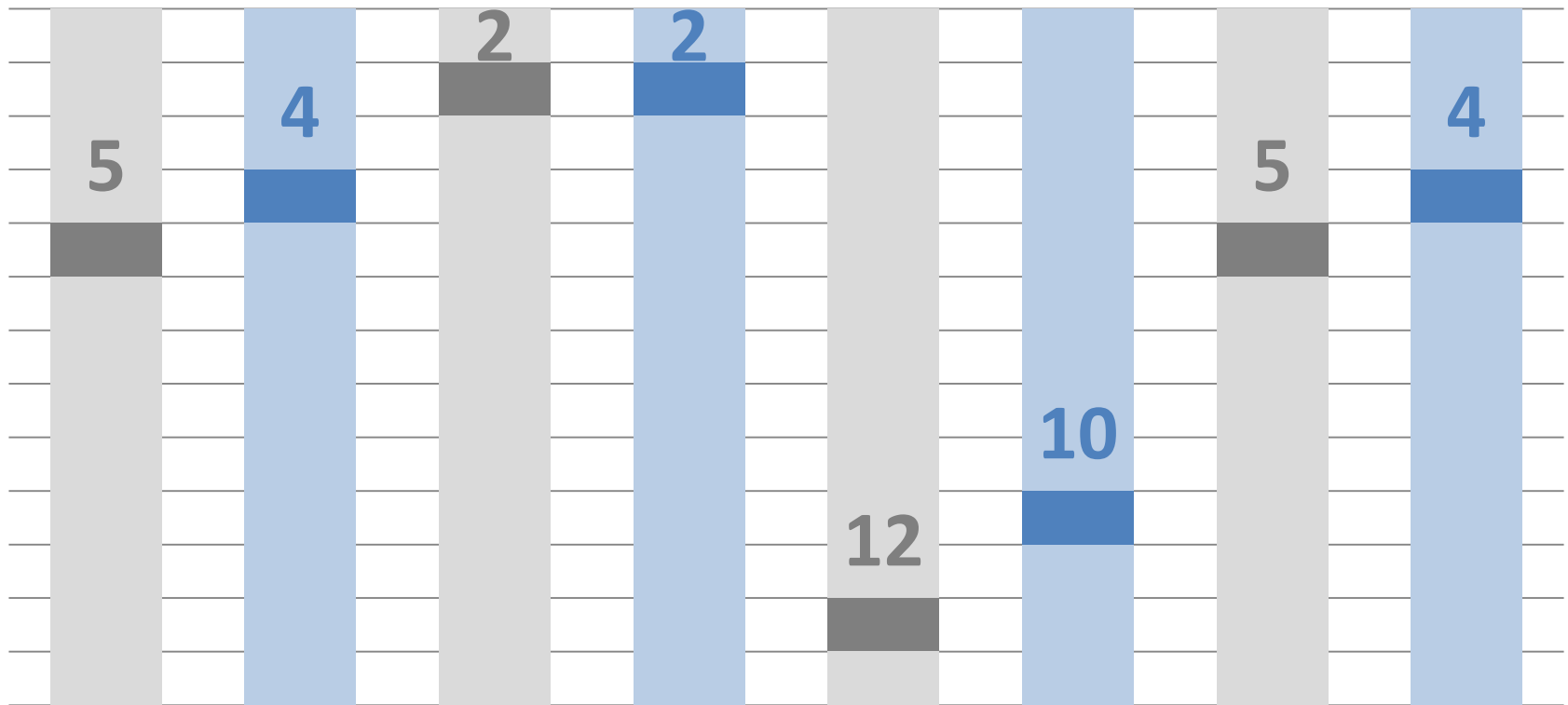
Q1.5: RESEARCH INCOME (INTENSITY)



All sources All sources (\$/FTPS) Tri-council Tri-council (\$/FTPS) Business Business (\$/FTPS)

 Research  Research Intensity

Q1.5: RESEARCH INCOME (INTENSITY)

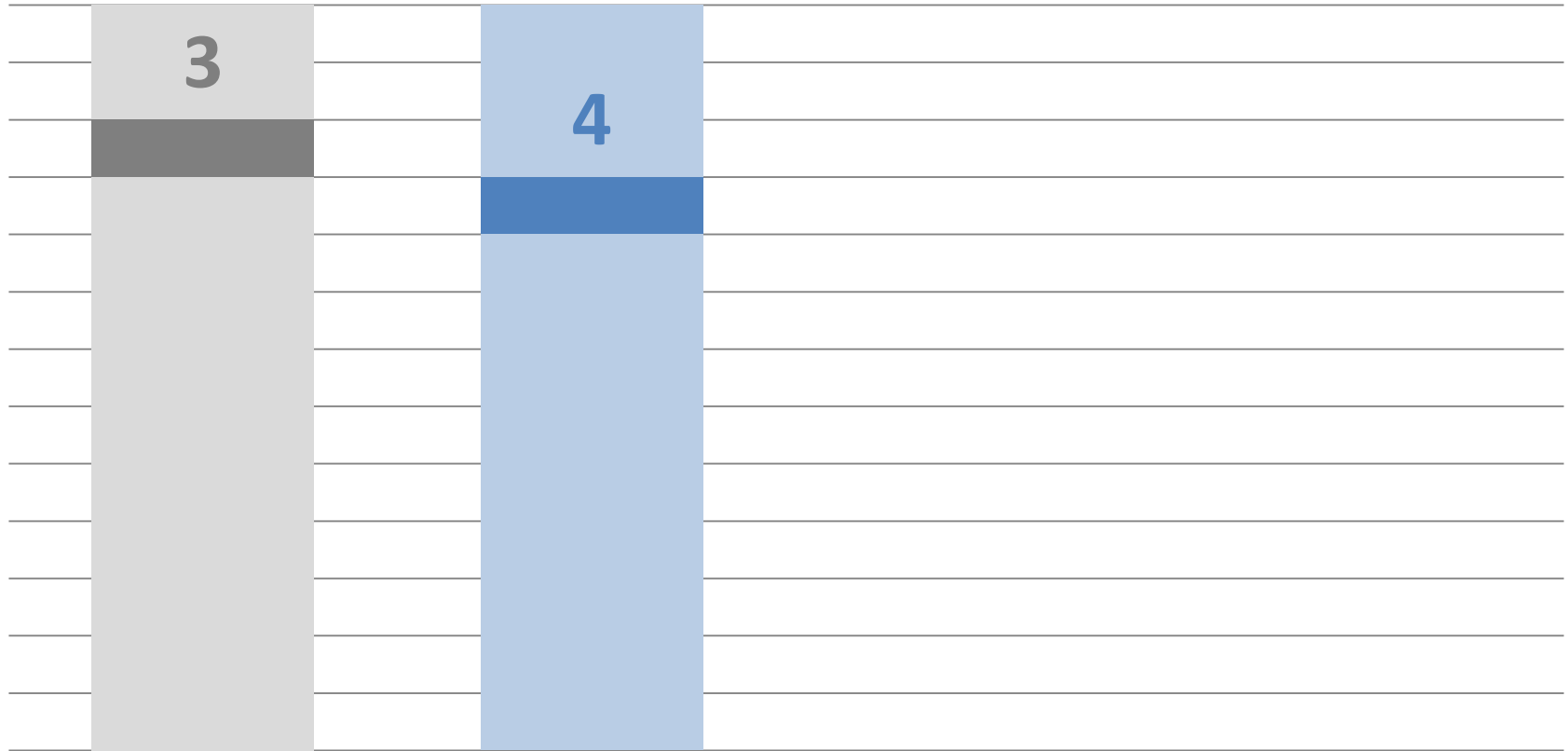


All sources All sources (\$/FTPS) Tri-council Tri-council (\$/FTPS) Business Business (\$/FTPS) Foreign Foreign (\$/FTPS)

Research
 Research Intensity




PUBLICATIONS (INTENSITY)



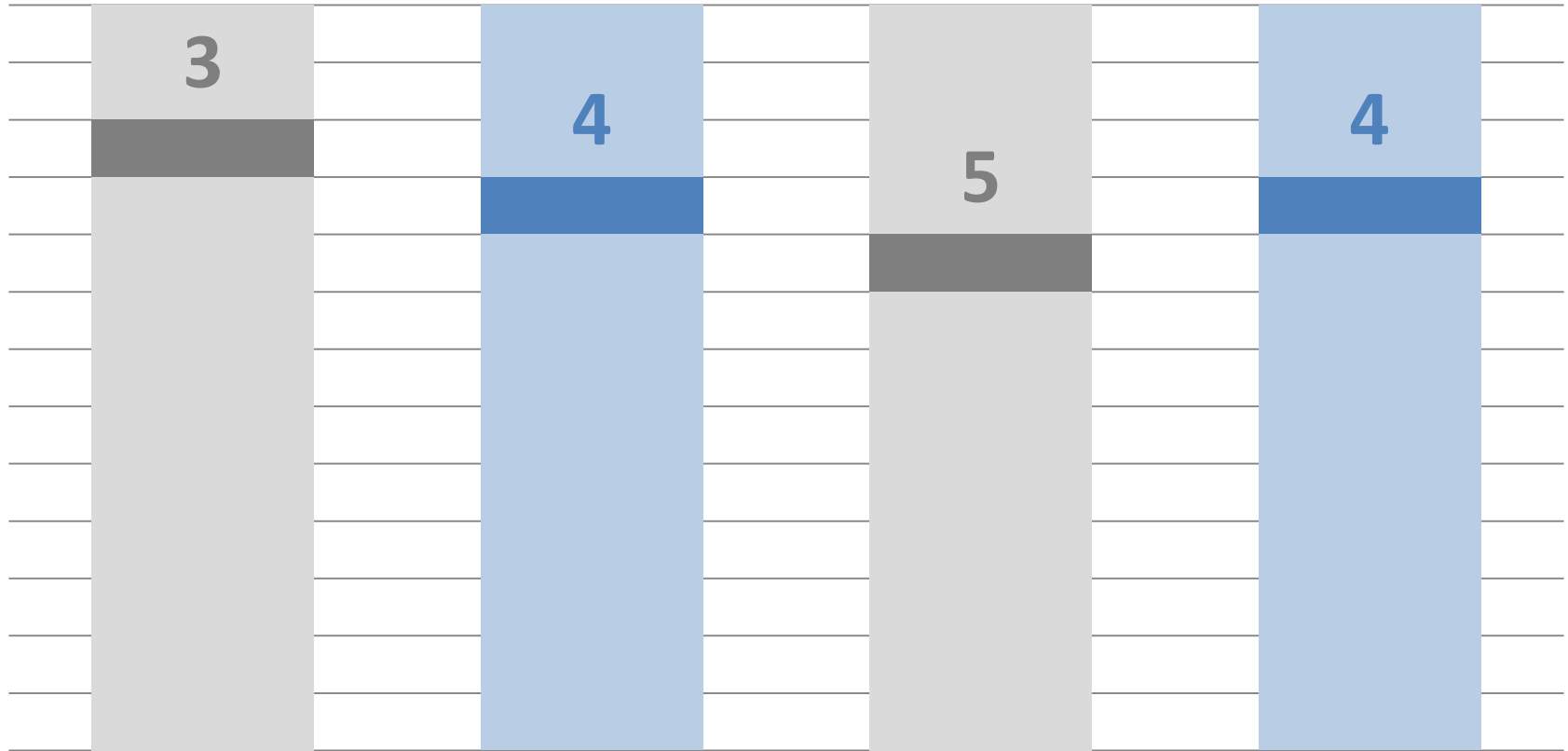
NSE publications

NSE Pub / FTPS

 Research

 Research Intensity

PUBLICATIONS (INTENSITY)




NSE publications

NSE Pub / FTPS

SSH publications

SSH Pub / FTPS

 Research

 Research Intensity

PART I: RESEARCH DISCUSSION

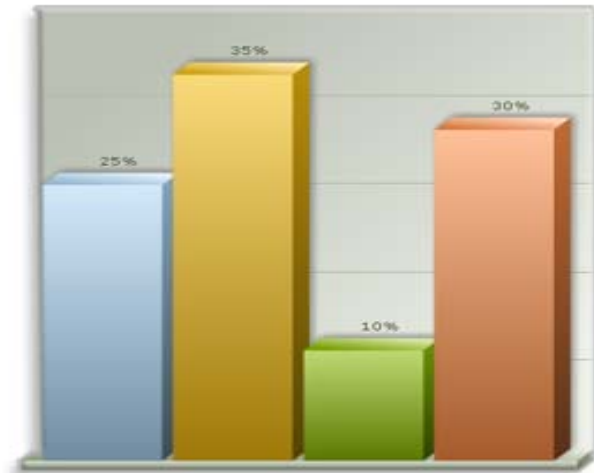


In order for the University to achieve its goal of being Canada's most **research-intensive** university, which of the following strategies do you think we should focus on?

1. Peer-reviewed research
2. Industry and private foundation partnerships
3. Commercialization

Part I: which of the following strategies do you think we should focus on?

1. Peer-reviewed research
2. Industry and private foundation partnerships
3. Commercialization



3D
Column Chart



Part II:

STUDENTS

PART II: STUDENTS McGILL'S MISSION



We are a research-intensive, **student-centred university**, with a commitment to excellence judged against the highest international standards, and an enduring sense of public purpose.

BENCHMARKING MCGILL NSSE



The **National Survey of Student Engagement (NSSE)** obtains information from hundreds of four-year colleges and universities in the USA and Canada about student participation in programs and activities that institutions provide for their learning and personal development.

BENCHMARKING MCGILL NSSE BENCHMARKS



The NSSE benchmarks regroup 42 items into 5 general areas that provide an overview of the undergraduate student experience and areas of personal growth and development.

Benchmarks are computed on a 0 to 100 scale.

BENCHMARKING MCGILL NSSE BENCHMARKS



The NSSE benchmark areas are:

1. Level of academic challenge
2. Active & collaborative learning
3. Student-faculty interaction
4. Enriching educational experiences
5. Supportive campus environment

PART II: STUDENTS

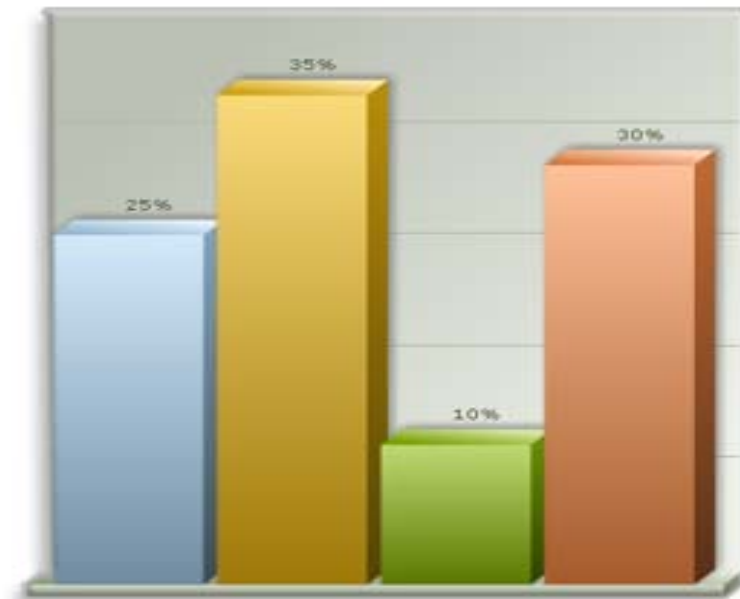
QUESTION 2.1



Where do you think McGill ranks among the G13 when our senior-year undergraduates evaluate the **level of academic challenge**?

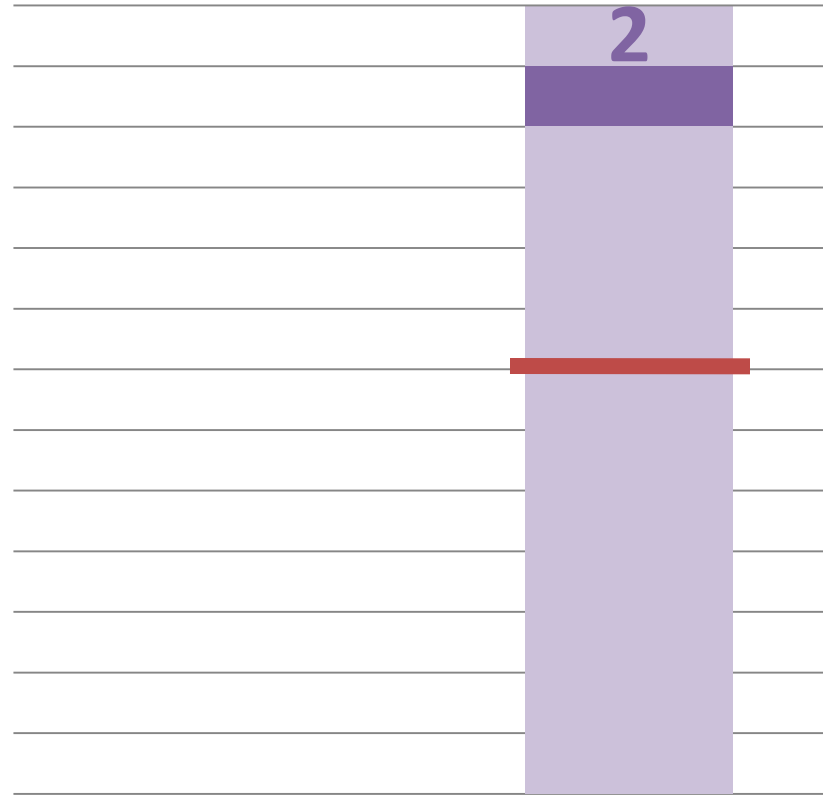
NSSE: Level of Academic Challenge (G13)

1. 1st
2. 2nd
3. 3rd
4. 4th
5. 5th
6. 6th
7. 7th
8. 8th
9. 9th
10. 10th-13th



3D
Column Chart

Q2.1: ACADEMIC CHALLENGE



Senior Year

Q2.1: ACADEMIC CHALLENGE



PART II: STUDENTS

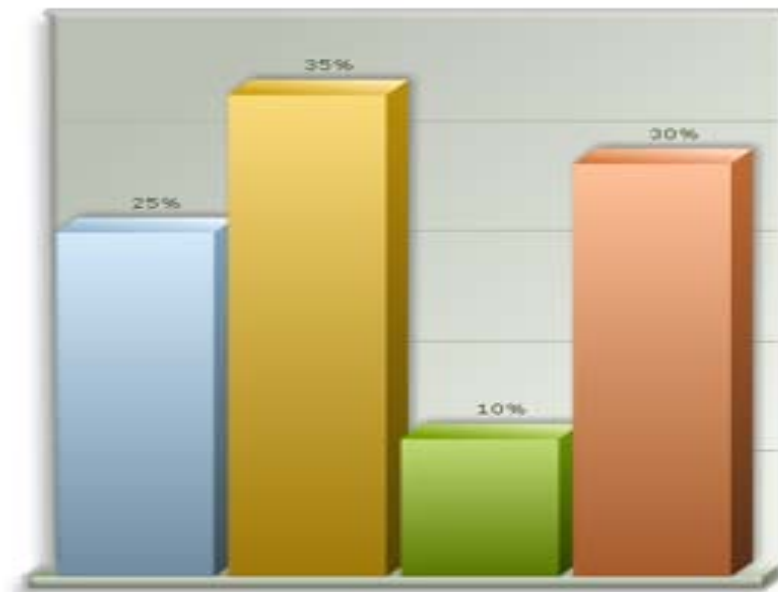
QUESTION 2.2



Where do you think McGill ranks among the G13 when our senior year undergraduates evaluate the level of **active and collaborative learning**?

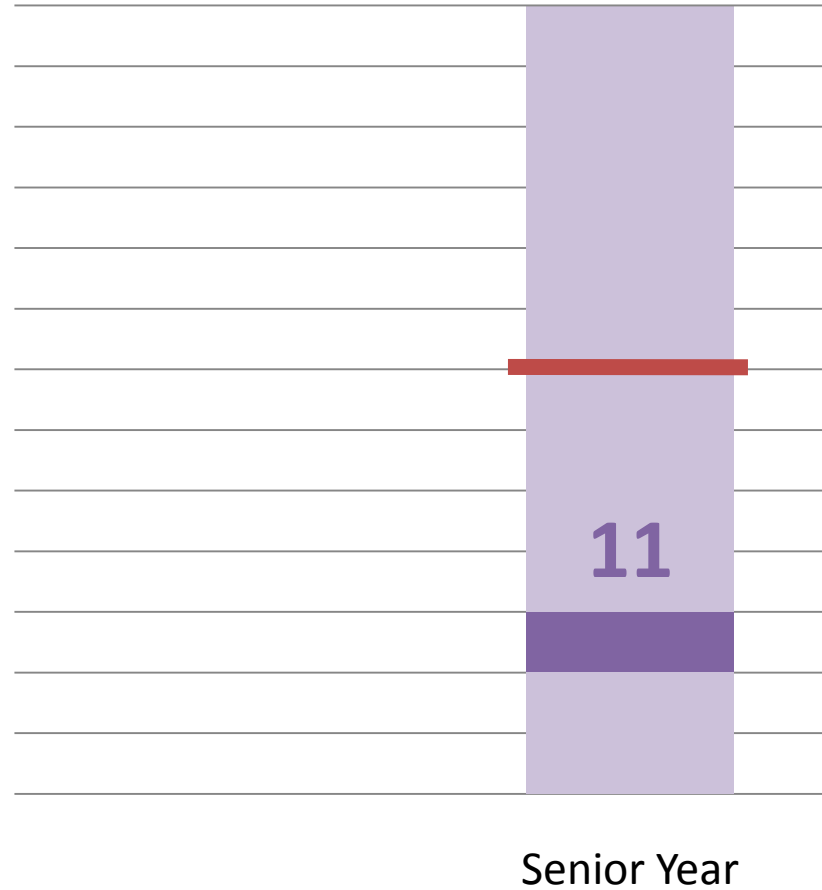
NSSE: Active and Collaborative Learning (G13)

1. 1st
2. 2nd
3. 3rd
4. 4th
5. 5th
6. 6th
7. 7th
8. 8th
9. 9th
10. 10th-13th

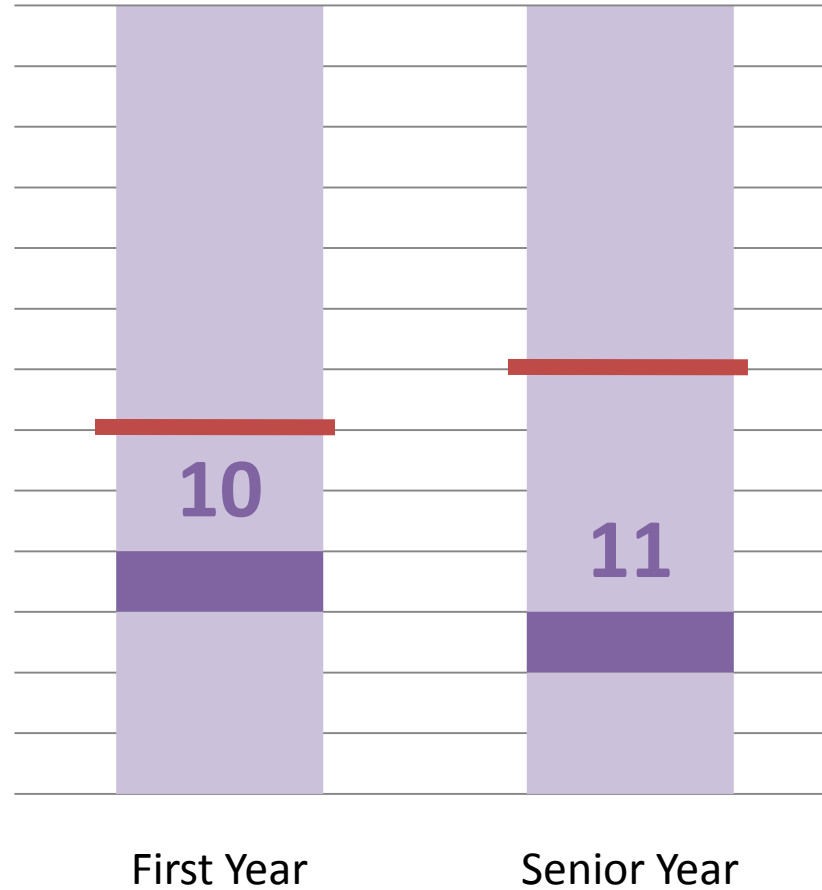


3D
Column Chart

Q2.2: ACTIVE & COLLABORATIVE LEARNING



Q2.2: ACTIVE & COLLABORATIVE LEARNING



PART II: STUDENTS

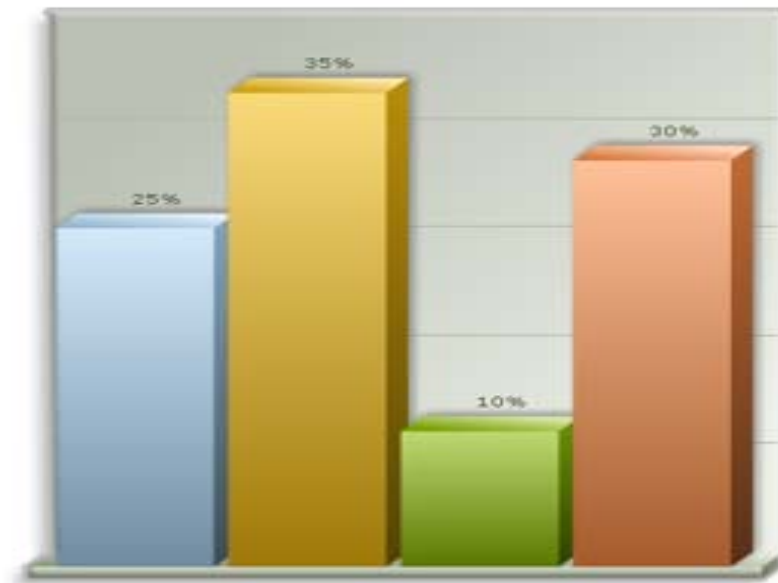
QUESTION 2.3



Where do you think McGill ranks among the G13 when our senior year undergraduates evaluate **student-faculty interaction**?

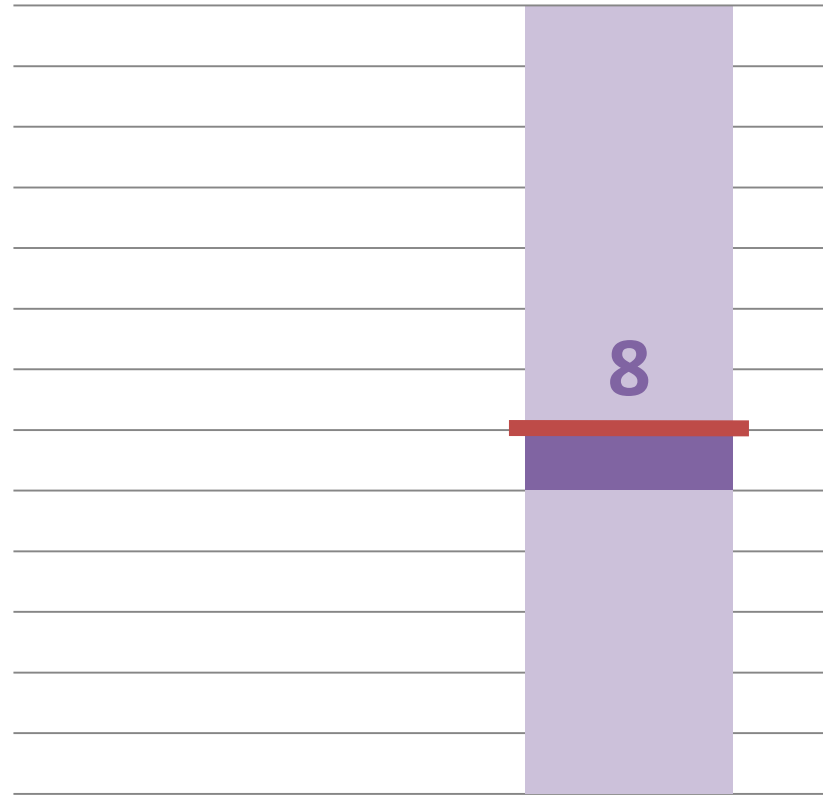
NSSE: Student-Faculty Interaction (G13)

1. 1st
2. 2nd
3. 3rd
4. 4th
5. 5th
6. 6th
7. 7th
8. 8th
9. 9th
10. 10th-13th



3D
Column Chart

Q2.3: STUDENT-FACULTY INTERACTION



Senior Year

Q2.3: STUDENT-FACULTY INTERACTION



PART II: STUDENTS

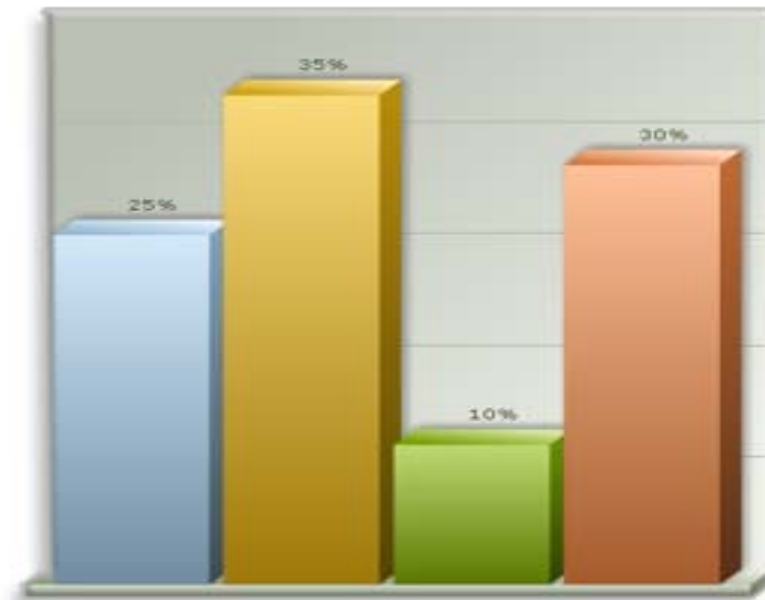
QUESTION 2.4



Where do you think McGill ranks among the G13 when our senior year undergraduates evaluate the level of **enriching educational experience**?

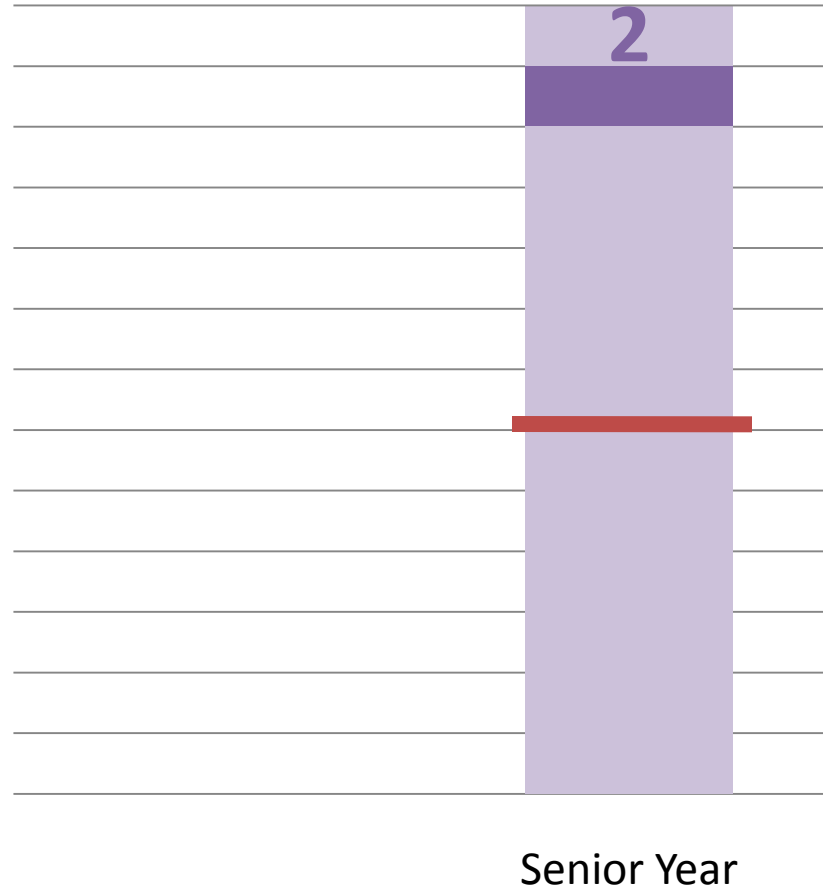
NSSE: Enriching Educational Experience (G13)

1. 1st
2. 2nd
3. 3rd
4. 4th
5. 5th
6. 6th
7. 7th
8. 8th
9. 9th
10. 10th-13th

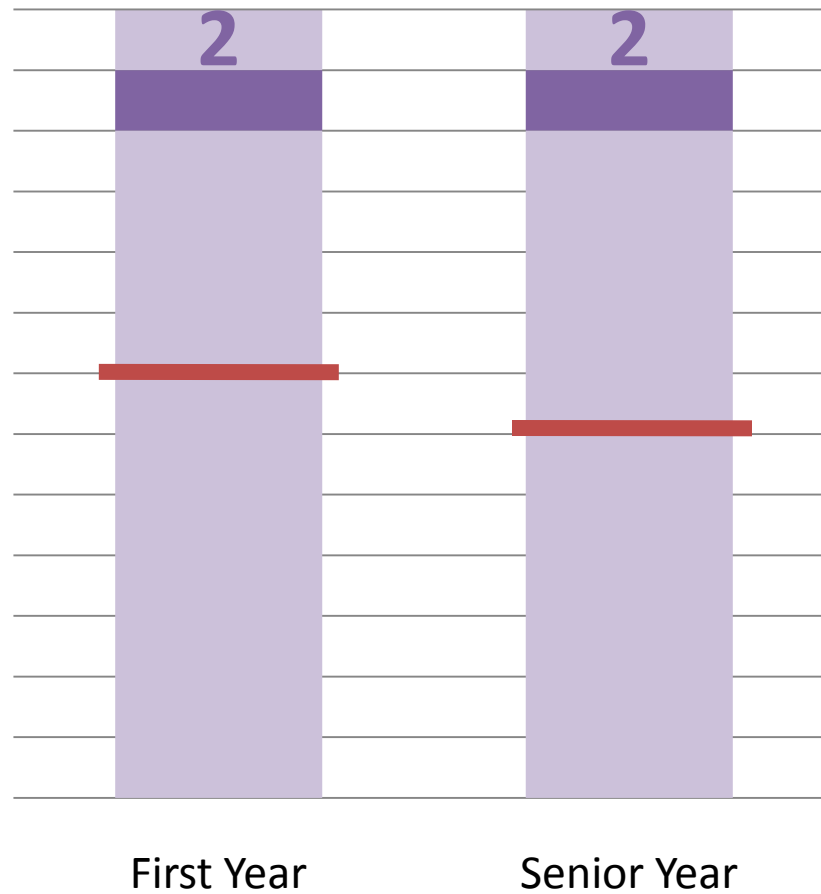


3D
Column Chart

Q2.4: ENRICHING EDUCATIONAL EXPERIENCES



Q2.4: ENRICHING EDUCATIONAL EXPERIENCES



PART II: STUDENTS

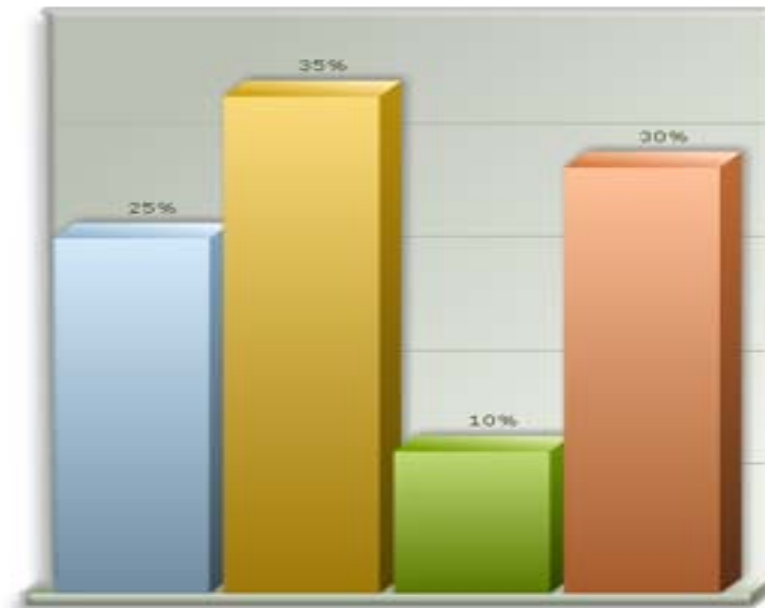
QUESTION 2.5



Where do you think McGill ranks among the G13 when our senior-year undergraduates evaluate **supportive campus environment**?

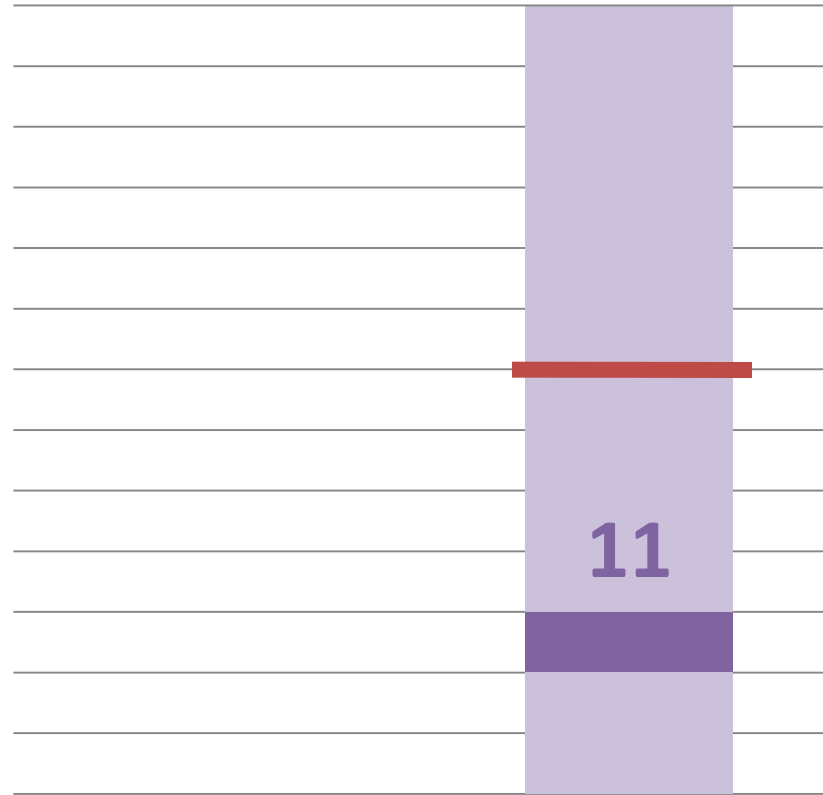
NSSE: Supportive Campus Environment (G13)

1. 1st
2. 2nd
3. 3rd
4. 4th
5. 5th
6. 6th
7. 7th
8. 8th
9. 9th
10. 10th-13th



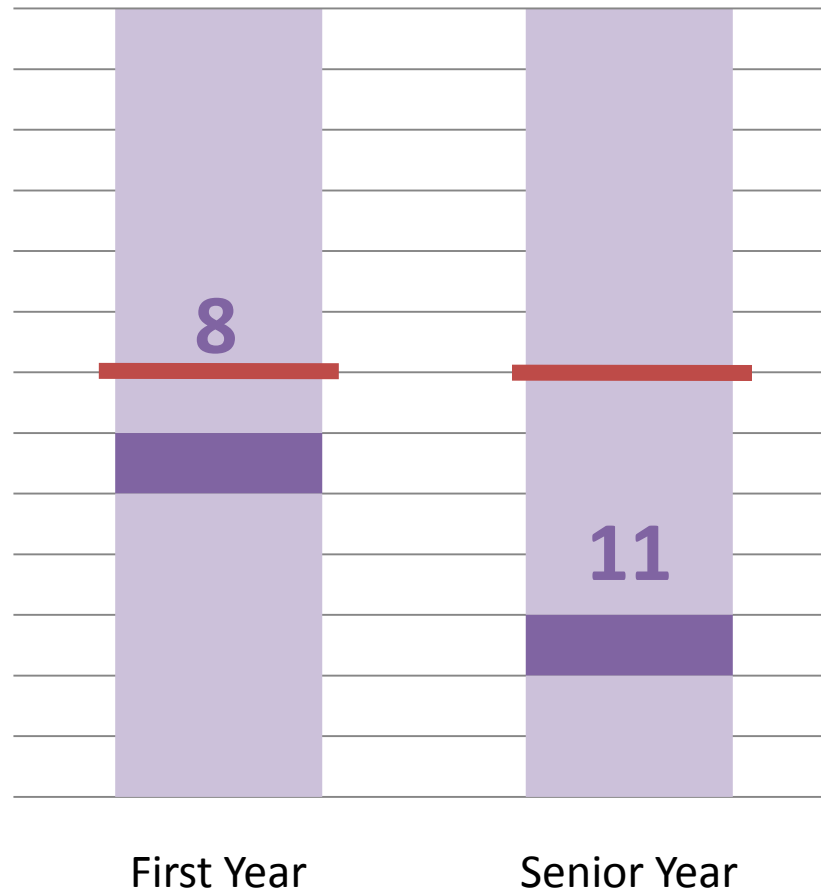
3D
Column Chart

Q2.5: SUPPORTIVE CAMPUS ENVIRONMENT

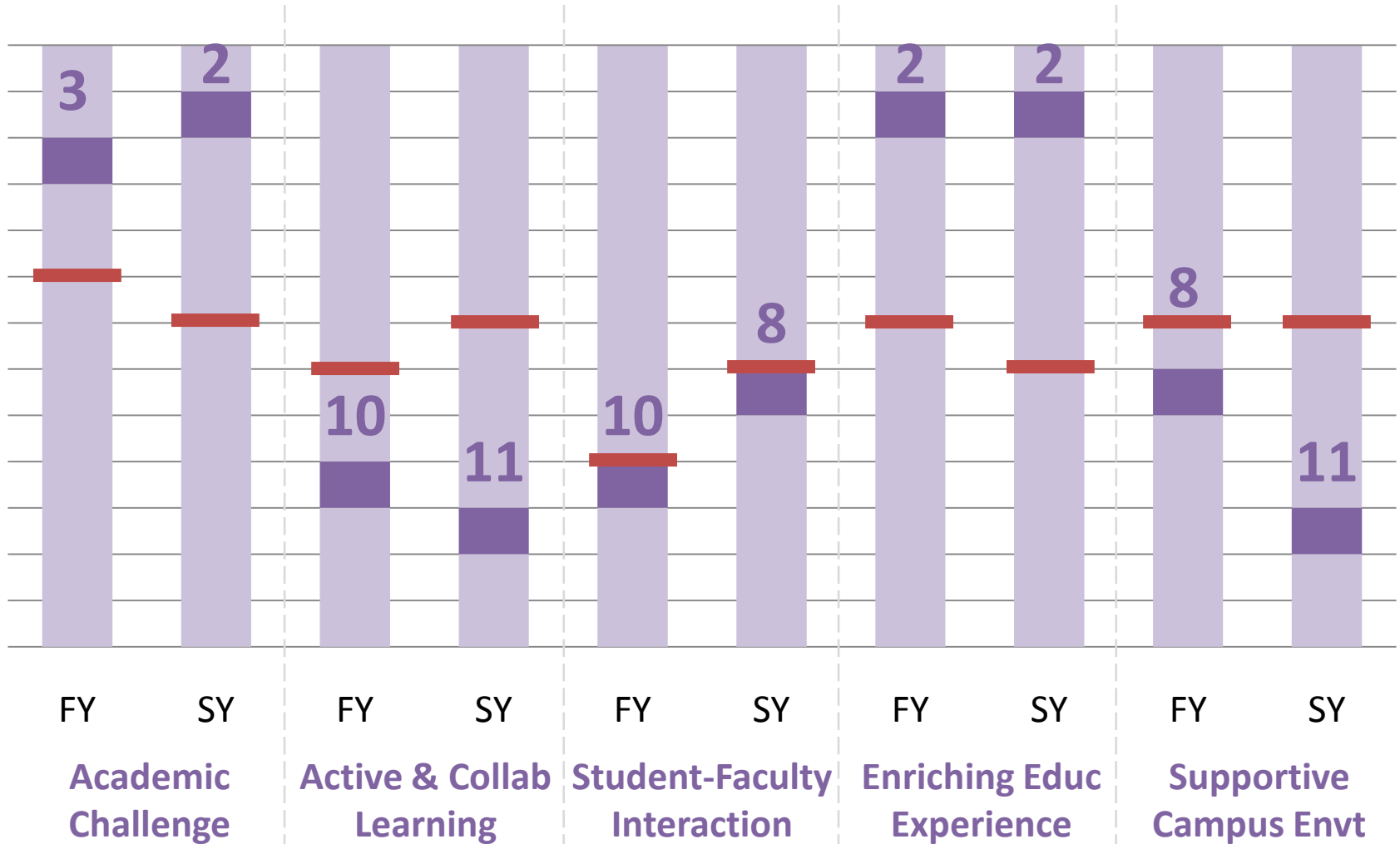


Senior Year

Q2.5: SUPPORTIVE CAMPUS ENVIRONMENT



NSSE RESULTS: SUMMARY



PART II: STUDENTS DISCUSSION

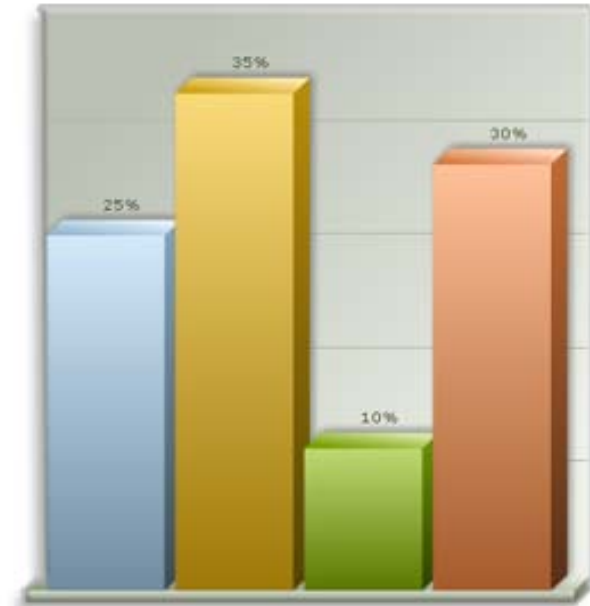


In order for the University to achieve its goal as being a **student-centred** university, which of the following strategies do you think we should focus on?

1. Enhancing the level of academic challenge
2. Providing active & collaborative learning
3. Enhancing student-faculty interaction

Part II: Which of the following strategies do you think we should focus on?

1. Enhancing the level of academic challenge
2. Providing active & collaborative learning
3. Enhancing student-faculty interaction



3D
Column Chart



Part III:

INTERNATIONAL STANDARDS

PART III: INTERNATIONAL STANDARDS McGILL'S MISSION



We are a research-intensive, student-centred university, **with a commitment to excellence judged against the highest international standards**, and an enduring sense of public purpose.

BENCHMARKING MCGILL SHANGHAI RANKING



The Academic Ranking of World Universities is compiled by Shanghai Jiao Tong University.

Indicator	Explanation	Weighting
Nobel Prizes (Alumni)	Alumni winning Nobel Prizes & Fields Medals	10%
Nobel Prizes (Staff)	Staff winning Nobel Prizes & Fields Medals	20%
Citations	Highly-cited researchers in 21 broad subject categories	20%
Articles	Articles published in Nature and Science	20%
SCI & SSCI	Science Citation Index and Social Sciences Citation Index	20%
Performance per capita	Per capita academic performance (on the indicators above) of an institution	10%

PART III: INTERNATIONAL STANDARDS

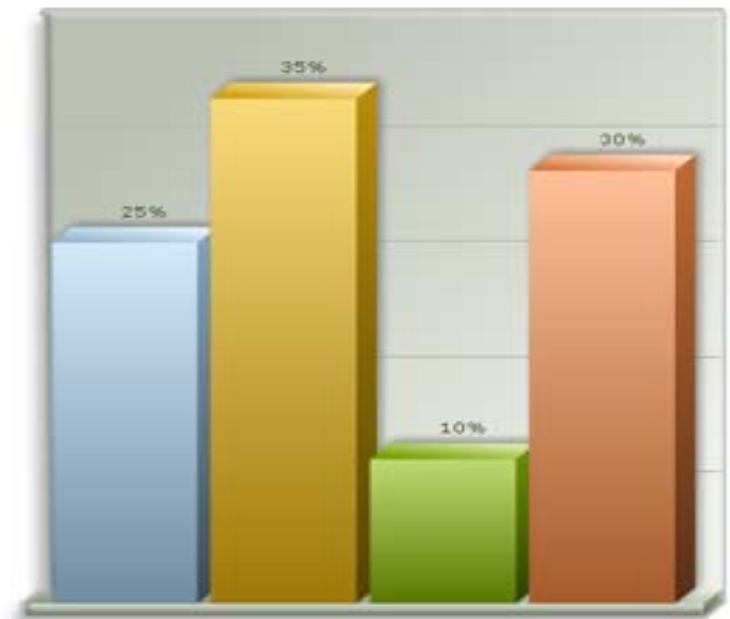
QUESTION 3.1



Where do you think McGill ranks according to the **Shanghai Academic Ranking of World Universities**?

Shanghai Academic Ranking of World Universities

1. 1st to 5th
2. 6th to 10th
3. 11th to 20th
4. 21st to 30th
5. 31st to 40th
6. 41st to 50th
7. 51st to 60th
8. 61st to 70th
9. 71st to 100th
10. 101st to 200th



3D
Column Chart

Q3.1: SHANGHAI ACADEMIC RANKING

World Rank	Institution	National Rank	Total Score
1	Harvard University	1	100
2	Stanford University	2	73.7
3	University of California - Berkeley	3	71.4
4	University of Cambridge	1	70.4
5	Massachusetts Institute of Technology (MIT)	4	69.6
6	California Institute of Technology	5	65.4
7	Columbia University	6	62.5
8	Princeton University	7	58.9
9	University of Chicago	8	57.1
10	University of Oxford	2	56.8
24	University of Toronto	1	43.1
35	University of British Columbia	2	36.3
60	McGill University	3	29.9

BENCHMARKING MCGILL THE – QS RANKINGS



The Times Higher Education - QS World University Rankings were conceived to present a multi-faceted view of the relative strengths of the world's leading universities

Indicator	Explanation	Weighting
Academic Peer Review	Composite score drawn from peer review survey	40%
Employer Review	Score based on responses to employer survey.	10%
Faculty Student Ratio	Score based on student faculty ratio	20%
Citations per Faculty	Score based on research performance factored against the size of the research body	20%
International Faculty	Score based on proportion of international faculty	5%
International Students	Score based on proportion of international students	5%

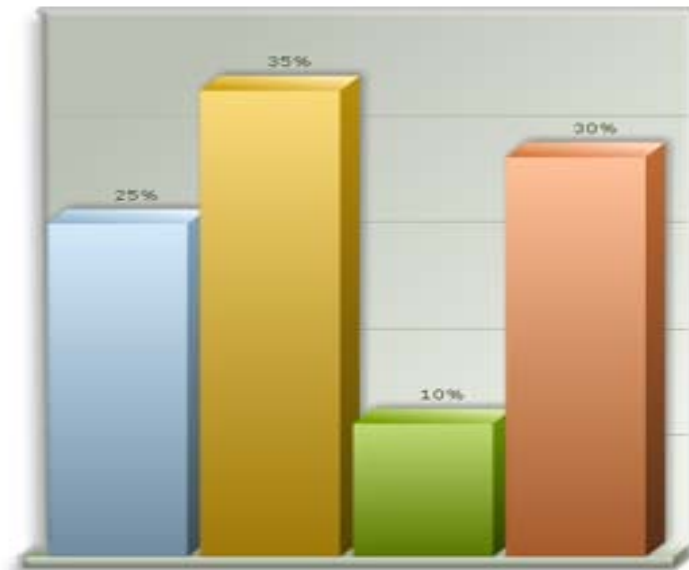
PART III: INTERNATIONAL STANDARDS
QUESTION 3.2



Where do you think McGill ranks according to the **Times Higher Education – QS World University Rankings?**

THE – QS World University Rankings

1. 1st to 5th
2. 6th to 10th
3. 11th to 20th
4. 21st to 30th
5. 31st to 40th
6. 41st to 50th
7. 51st to 60th
8. 61st to 70th
9. 71st to 100th
10. 101st to 200th



3D
Column Chart

Q3.2: THE – QS RANKINGS

Institution	2005	2006	2007	2008	2009
McGill	24	21	12	20	18
Toronto	29	27	45	41	29
UBC	38	50	33	34	40
Alberta	149	133	97	74	59
Montréal	132	181	93	91	107
Waterloo	159	204	112	129	113
Queen's	261	176	88	117	118
McMaster	184	155	108	117	143
Calgary		266	166	170	149
Western	191	215	126	159	151
Simon Fraser		282	139	164	196
Dalhousie			221	197	
Total Canadian Schools in Top 200	8	7	11	12	11

PART III: INTERNATIONAL STANDARDS DISCUSSION

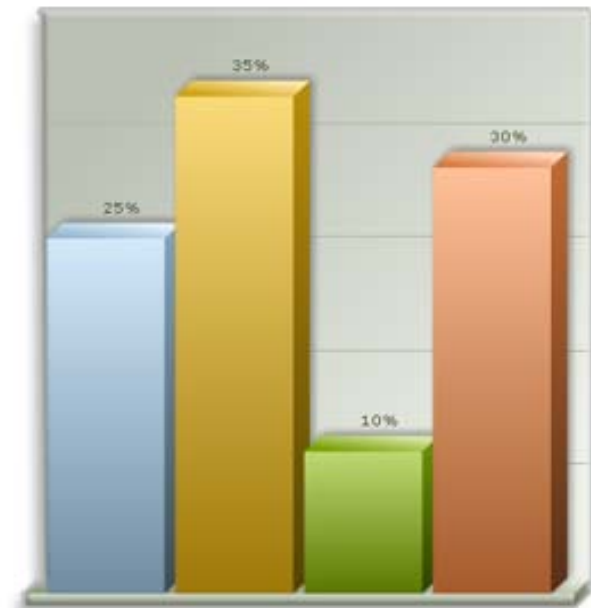


In order for the University to live up to its **commitment to excellence, as judged against the highest international standards**, which of the following strategies do you think we should focus on?

1. Providing our undergraduate students with exposure to international activities
2. Bringing more international students to McGill
3. Ensuring McGill professors have access to international research networks

Part III: Which of the following strategies do you think we should focus on?

1. Providing our undergraduate students with exposure to international activities
2. Bringing more international students to McGill
3. Ensuring McGill professors have access to international research networks



3D
Column Chart



Part IV:

CONTRIBUTION TO SOCIETY

PART IV: SOCIETY McGILL'S MISSION



We are a research-intensive, student-centred university, with a commitment to excellence judged against the highest international standards, and an **enduring sense of public purpose.**

PART IV: SOCIETY DISCUSSION

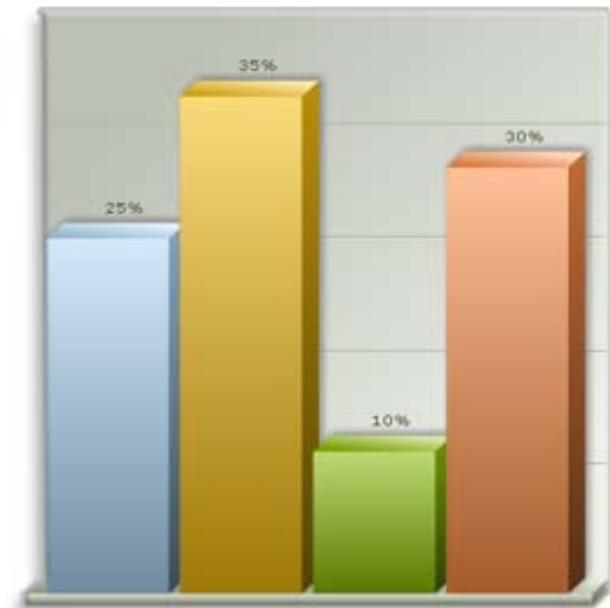


In order for the University to achieve its goal in developing an **enduring sense of public purpose**, which of the following strategies do you think we should focus on?

1. Faculty outreach and involvement
2. Community activity
3. Continuing education

Part IV: Which of the following strategies do you think we should focus on?

1. Faculty outreach & involvement
2. Community activity
3. Continuing education



3D
Column Chart

FINAL QUESTION



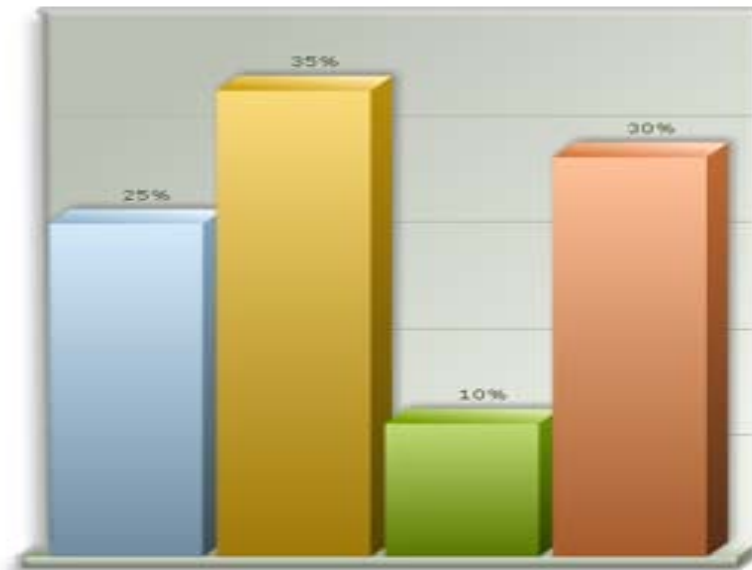
Do you agree with this statement?

McGill is:

- a research-intensive
- student-centred university
- with a commitment to excellence judged against the highest international standards, and
- an enduring sense of public purpose.

Do you agree with this statement?

1. Strongly agree
2. Agree
3. Undecided
4. Disagree
5. Strongly disagree



3D
Column Chart