



*Inside the Issue - December 2020*

## REPORTS

Look inside to find activity reports from the education, strategic planning, and communications sub-committees.

## DID YOU KNOW?

Every month we'll bring you a new, interesting fact from the world of EDI.



## EDUCATIONAL RESOURCES

Find links to evidence-based resources for working towards equity, diversity and inclusion in a healthcare/educational context.

## HIGHLIGHTS

Showcasing what has happened and what is coming up to bring awareness, and to support EDI initiatives in the field.

## A MESSAGE FROM YOUR COMMUNICATIONS SUB-COMMITTEE

Thank you for the positive response to our first newsletter last month. We are looking forward to bringing you more. We will be bringing you more newsletters in the new year. Have a wonderful, safe, holiday season! Send an email to [isabella.poitras@mail.mcgill.ca](mailto:isabella.poitras@mail.mcgill.ca) if you would like to have a resource featured in an upcoming issue.

*- Annika Hanson, Dr. Elin Thordardottir, Isabella Poitras & Mariska Burger  
EDI Communications Sub-Committee*



### Education

DESTA offers distance learning education, access to vocational training, academic advising, and more.



### Employability

DESTA offers employment support through job readiness training, personalized career counselling, assistance with resume, cover letter writing and more.



### Entrepreneurship

DESTA offers business courses, mentorships, access to business networks and networking events, and accounting, marketing, and legal services.

## COMMUNITY HIGHLIGHTS

If you're interested in spreading some holiday cheer, follow the link below for this Montreal charity. "Based in Little Burgundy and serving participants across Greater Montreal, DESTA supports Black youth aged 18 to 35 in reaching their educational, employability, and entrepreneurial goals through a holistic and individualized approach."

<https://destabyn.org/>

## EDUCATIONAL RESOURCES

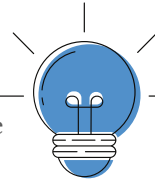
At SCSD, we remember the 14 women whose lives were violently taken in an act of anti-feminism at the Montreal Polytechnique. December 6th is now known as The National Day of Remembrance and Action on Violence against Women - check out the links here to learn more <https://cfc-swc.gc.ca/commemoration/vaw-vff/remembrance-commemoration-en.html> and <https://www.unwomen.org/en/what-we-do/ending-violence-against-women/take-action/16-days-of-activism>

## DID YOU KNOW?

Before there were SLPs there were elocutionists. African-American elocutionist **Hallie Quinn Brown**, was an early social and linguistic rights activist. Educated in Ontario in 1886, Brown founded language and literacy programs for former slaves, wrote books on elocution in African American English, and travelled the world promoting linguistic rights.

Learn more about her inspiring work here:

<https://leader.pubs.asha.org/doi/10.1044/leader.ftr4.13022008.20>



## MEET THE COMMITTEE

The EDI committee is a collaboration of SCSD faculty, and research and applied students. All members of the SCSD community are welcome to join. Our next meeting will take place in the new year. More details to come. Meet our current members:

**Chair:** *Dr. Laura Gonnerman*

**Education Sub-Committee:** *Dr. Noémie Auclair-Ouellet (lead), Sophie Vaillancourt, Kelly Root, Aaron Glick, Mahalia Tahririha, Lana Weshah, Aryana Napoleon Patenaude, Stephanie Deschamps*

**Strategic Plan Sub-Committee:** *Dr. Aparna Nadig (lead), Mahalia Tahririha, Dr. Karsten Steinhauer, Dr. Tanya Matthews, Dr. Nicole Li-Jessen*

**Communications Sub-Committee:** *Isabella Poitras (lead), Mariska Burger, Annika Hanson, Dr. Elin Thordardottir*

## EDUCATION COMMITTEE REPORT

*from Dr. Noémie Auclair-Ouellet*

- The Education Subcommittee has been working on surveys to collect information about how Equity, Diversity and Inclusion is incorporated in teaching at the SCSD. Students in the applied program, research students and members of Faculty will be asked a short series of question to reflect on EDI and suggest ways to improve training for all.
- The Education Subcommittee would like to thank the members of the committee at large for their input, as well as Pascale Caidor from the Office of Social Accountability and Community Engagement (SACE) for reviewing the survey and providing insightful comments. The surveys will be presented to members of the SCSD community at the December Faculty Meeting.

## STRATEGIC PLANNING COMMITTEE REPORT

*from Dr. Aparna Nadig*

- Many of our Admissions committee members and reviewers attended an Implicit Bias Training for the FMHS Admissions Reviewers on November 23rd. A recording is now available, if interested contact Aparna.
- We are gathering information on existing bursaries and working towards the creation of new bursaries for underrepresented groups in the health professions: indigenous and black students.
- We heard from Nicole Li-Jessen, Chair of the Widening Participation Committee, about the many pipeline programs for outreach to high school and CEGEP students who are underrepresented in the health professions. We would like to find ways for SLP students to be involved in these programs within the constraints of their MScA training.