



Réseau de  
cancérologie  
Rossey

Rossey  
Cancer  
Network

# Rossey Cancer Network First Annual Retreat



Centre universitaire  
de santé McGill



McGill University  
Health Centre



Hôpital général juif  
Jewish General Hospital



Centre hospitalier de St. Mary  
St. Mary's Hospital Center



Réseau de  
cancérologie  
Rossy

Rossy  
Cancer  
Network

# Introduction

Wilson Miller



Centre universitaire  
de santé McGill



McGill University  
Health Centre



Hôpital général juif  
Jewish General Hospital



Centre hospitalier de St. Mary  
St. Mary's Hospital Center

# Rossy Cancer Network

## Partner Institutions

McGill University

McGill University Health Centre

Jewish General Hospital

St. Mary's Hospital Center

## MISSION

To improve the **quality of cancer care** received by the population served by the McGill Academic Health Network.

## VISION

To establish within ten years *The Rossy Cancer Network* as a **world-class comprehensive cancer network** with outcomes in cancer survival, mortality, and patient satisfaction as good or better than those of the leading international comprehensive cancer centres, such as Memorial Sloan-Kettering, Dana Farber and MD Anderson.



# Characteristics of world-class centers

*National Cancer Institute designation of a Comprehensive Cancer Center ([www.cancer.gov](http://www.cancer.gov))*

- Prevention, diagnosis and treatment of cancer
- Leading-edge treatments
- Trans-disciplinary research – basic, clinical, behavioral & population-based
- Outreach and education
- Commit to a patient-centered experience
- Adopt a culture of continuous quality improvement
- Focus on measurement and benchmarking against the best

# Rossy Cancer Network

*multi-disciplinary & multi-institutional*



# Improving cancer care: Equation for change



World-class center

Improving cancer care

Patients, clinical excellence, research

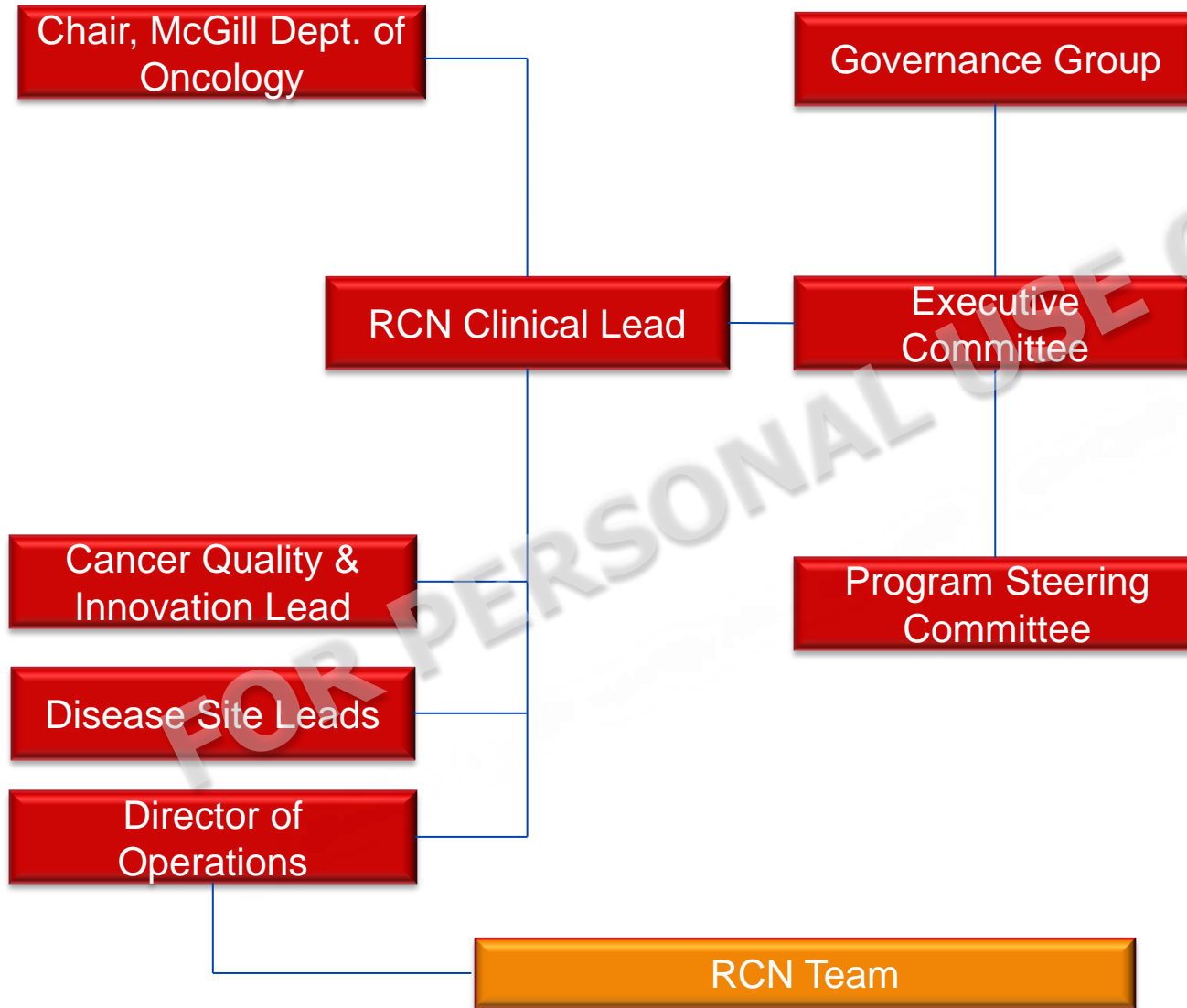
Members of the Rossy Cancer Network

Gift agreement, RCN staff



Scorecard

# RCN Governance Structure



- Dean of Medicine, Chair
- Vice Dean of Medicine
- Hospital PDGs (3)
- RCN Executives
- Special Invitees
- Oncology Leads
- RCN Clinical Lead
- Chair, Dept. of Oncology
- CQI Lead
- RCN Executives
- Vice Dean Medicine, Chair
- Oncology Leads (3)
- RCN Clinical Lead (chair)
- Nursing Directors (3)
- CQI Lead
- IT Directors (3)
- Director of Operation



Réseau de  
cancérologie  
Rossey

Rossey  
Cancer  
Network

**Thank you !**



Centre universitaire  
de santé McGill



McGill University  
Health Centre



Hôpital général juif  
Jewish General Hospital



Centre hospitalier de St. Mary  
St. Mary's Hospital Center