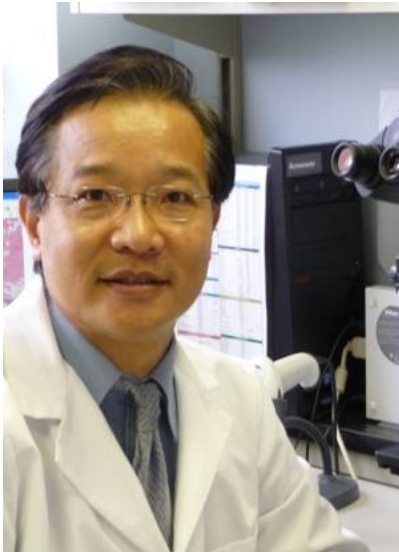


# Pathology Scientific Lecture Series 2019-2020

**Monday, February 24, 2020 1:15 pm**

## **“Radiology & Pathology Correlation of Breast Lesions**



### **Hua Yang, MD, Ph.D, FRCPC**

Clinical Associate Professor, University of Calgary,  
Calgary, Alberta, Canada.

Breast Pathology Speciality Group Leader, University of  
Calgary, Calgary, Alberta, Canada.

Executive member of the Alberta Breast Cancer Care  
Committee, Alberta, Canada.

Dr. Yang finished his Residency in Anatomic Pathology at Dalhousie University in Halifax and a Clinical Fellowship training in Breast Pathology at Mount Saint Hospital in University of Toronto.

Dr. Yang currently is a Clinical Associate Professor and the Breast Pathology Specialty Group Leader for University of Calgary and for the Province of Alberta. He is also an executive member of The Provincial Breast Cancer Care Committee in the province of Alberta, Canada.

Dr. Yang is specialized in breast cancer diagnosis and cancer prognostic/predictive marker report. He has published 6 book chapters, 35 journal articles and numerous international meeting presentations.

FOR MORE INFORMATION: [pathologysec.med@mcgill.ca](mailto:pathologysec.med@mcgill.ca)

Sponsored by

**abbvie**

**3775 University Street Duff A5  
Glen Room EM 13509**

