

NP Year 1 Orientation Day  
August 24, 2022

Welcome NP Students!



McGill

Ingram School  
of Nursing

École des sciences  
infirmières Ingram

# This Afternoon's Plan

**13:00 – 14:00**      **MSSS NP Bursary Information Session**

**14:00 – 14:15**      **Introduction to NP Program**

**14:15 – 15:00**      **Break out by concentration**

- **Primary Care – 1825 (until 16h)**
- **Mental Health – 1801**
- **Pediatric – 1916**
- **Adult Care – 1925**



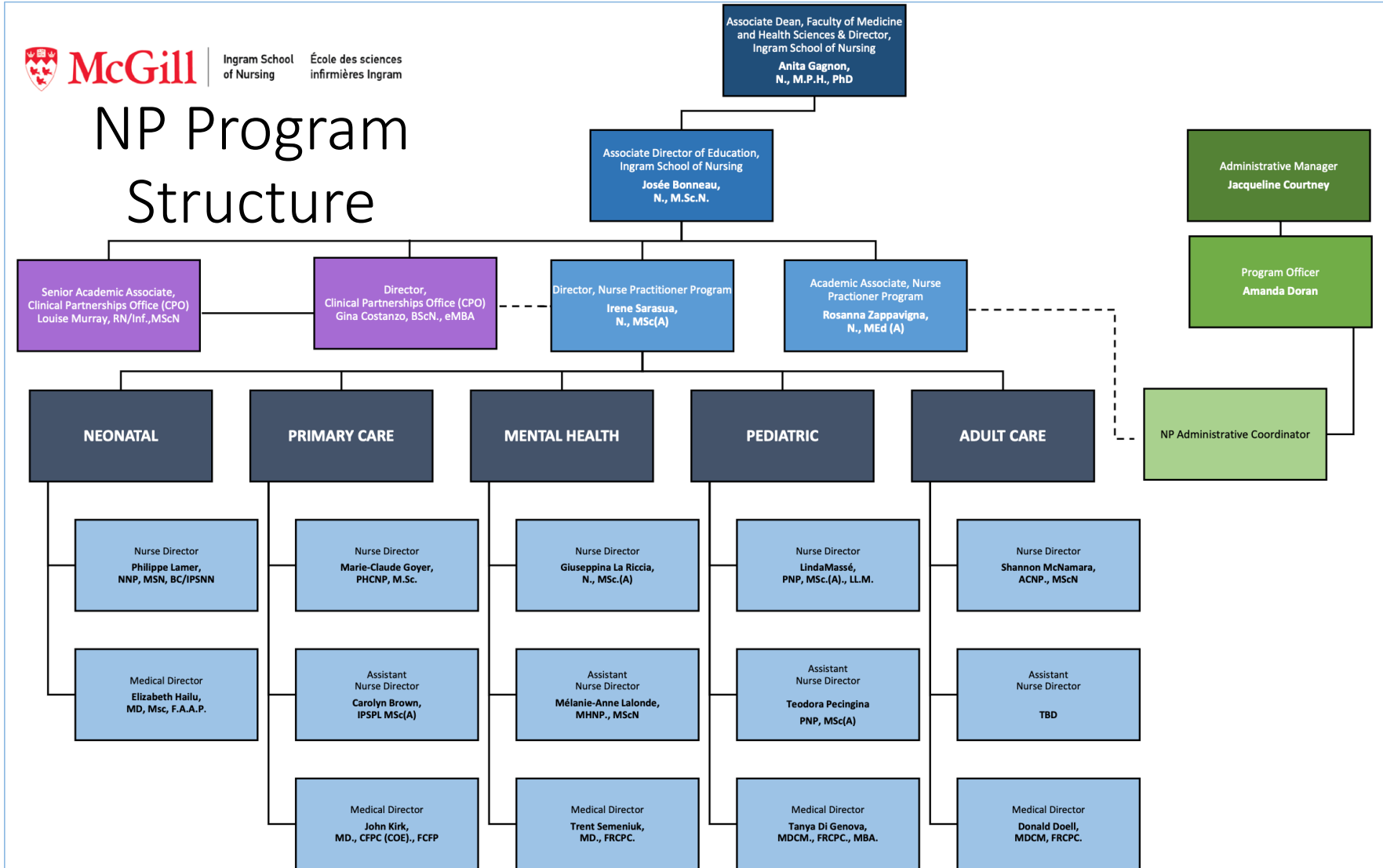
**McGill**

Ingram School  
of Nursing

École des sciences  
infirmières Ingram

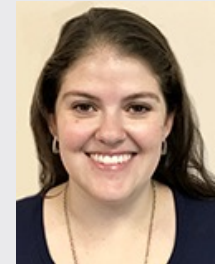


# NP Program Structure



# NP Student & Administrative Support

- **Petra Gaiser**, Student Affairs Officer
- **Ana Carolina Tomaselli**, Graduate Student Affairs Coordinator
- **Amanda Doran**, Program Administrator (NP Administrative Coordinator)
- **Louise Murray**, Senior Academic Associate, Clinical Partnership Office



McGill

Ingram School  
of Nursing

École des sciences  
infirmières Ingram

# NP Program Committees

- Part of Regulation
- Composed of:
  - Students
  - Faculty
  - Clinical partners (NP, MD, RN & administrators)
  - Graduates
- Responsibilities:
  - Oversea functioning of program (QC & QI)
  - Approve major changes (e.g. curriculum changes)
- Meet 4-6 times per year



McGill

Ingram School  
of Nursing

École des sciences  
infirmières Ingram

# NP Course of Study

Adult Care, Mental Health & Primary Care



**McGill**

Ingram School  
of Nursing

École des sciences  
infirmières Ingram

# NP Course of Study

## Pediatrics

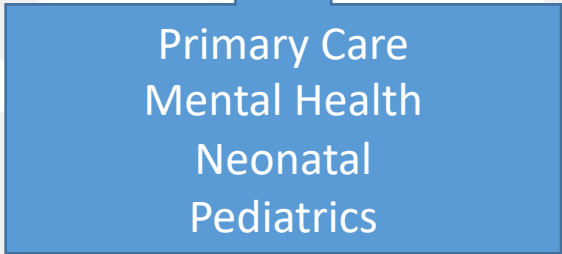


**McGill**

Ingram School  
of Nursing

École des sciences  
infirmières Ingram

# Academic Partnerships



Primary Care  
Mental Health  
Neonatal  
Pediatrics

A blue rectangular box with a white upward-pointing arrow at the top, containing the text 'Primary Care', 'Mental Health', 'Neonatal', and 'Pediatrics' stacked vertically.

Primary Care  
Mental Health

A blue rectangular box with a white upward-pointing arrow at the top, containing the text 'Primary Care' and 'Mental Health' stacked vertically.

**McGill**

Ingram School  
of Nursing

École des sciences  
infirmières Ingram



# Getting involved!

- Nursing Graduate Student Association (NGSA) – Ashley Khoury (VP Academic)
- Class Representative (cohort)
- Program Committee Representative
- Mentorship!
- SFAC
- Organise Group Experiential session (Well Office)
- Learning Environment Student Advisor (Well Office)



McGill

Ingram School  
of Nursing

École des sciences  
infirmières Ingram

# Speak-up!

## Student Feedback

### NP Town Halls

- Two times/year
- Zoom or pizza dinner
- All NP Faculty, Students & Student Affairs Office

### SFAC

- Once per semester
- Representatives from each Graduate Program
- Co-Chaired Faculty & students

### NP Team

- Program Director, Nurse/MD Director
- Whenever you want (by appt)
- E-mail, on-line/in-person meeting



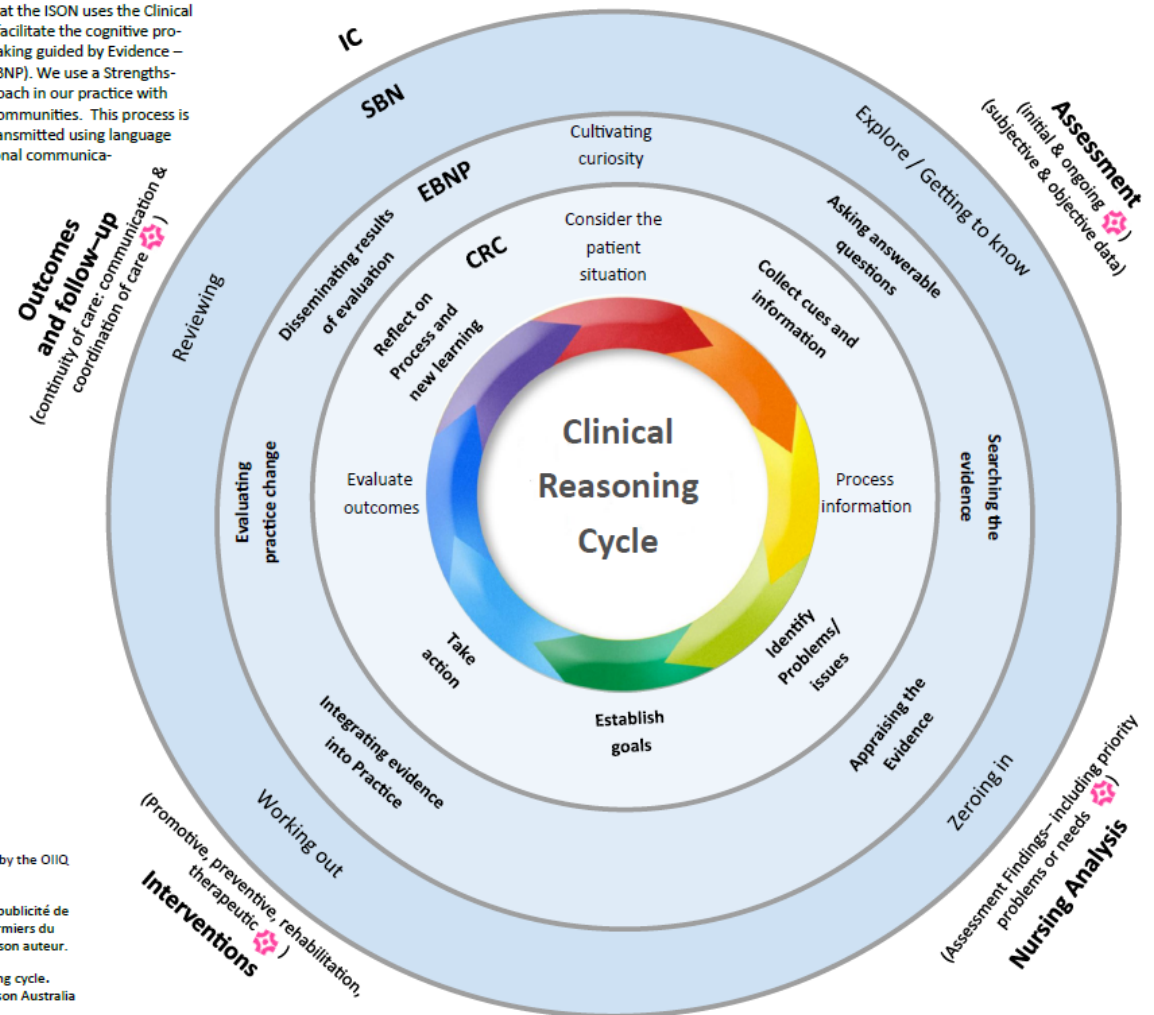
McGill

Ingram School  
of Nursing

École des sciences  
infirmières Ingram

# ISON Clinical Reasoning Process

The Nursing Process used at the ISON uses the Clinical Reasoning Cycle (CRC) to facilitate the cognitive process of clinical decision making guided by Evidence-based Nursing Practice (EBNP). We use a Strengths-Based Nursing (SBN) approach in our practice with individuals, families and communities. This process is documented and orally transmitted using language adapted for interprofessional communication (IC)



❖ Indicates language used by the OIIQ

Cette publicité n'est pas une publicité de l'Ordre des infirmières et infirmiers du Québec et elle n'engage que son auteur.

Image credit: Clinical reasoning cycle. Levett-Jones et al, 2010. Pearson Australia



**McGill**

Ingram School  
of Nursing

École des sciences  
infirmières Ingram

# McGill NP Program Competency Framework – in Development

## **DOMAINS:**

1. PROFESSIONALISM
2. CLINICAL PRACTICE
3. COMMUNICATION & COLLABORATION
4. EDUCATION & PROFESSIONAL DEVELOPMENT
5. QUALITY IMPROVEMENT & RESEARCH
6. LEADERSHIP & ADVOCACY

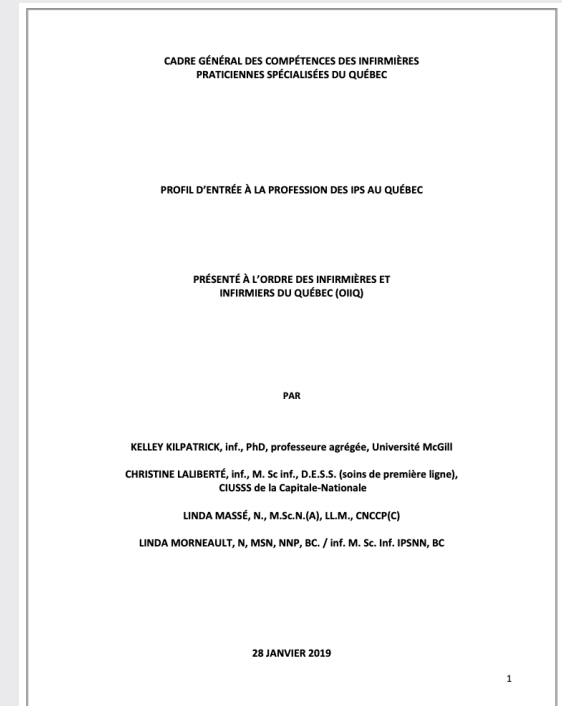
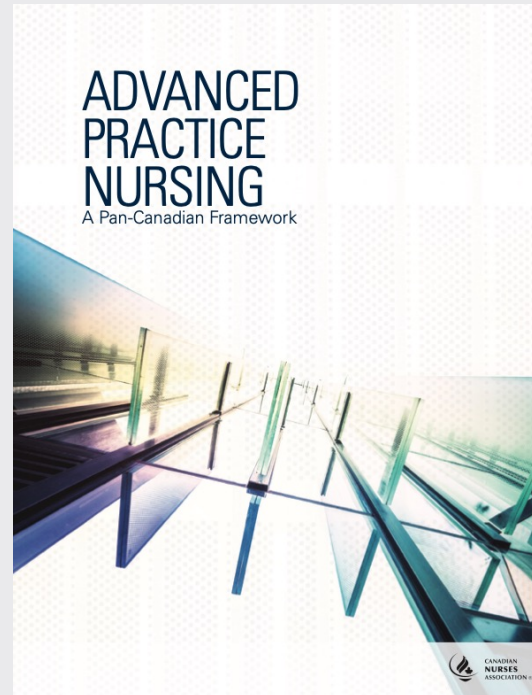
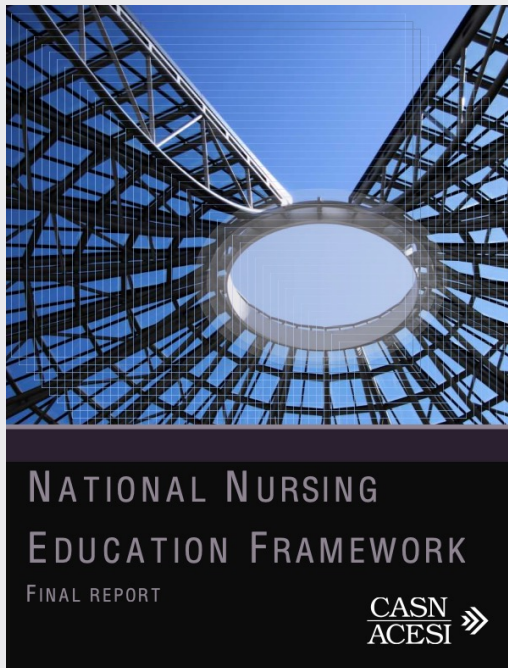


**McGill**

Ingram School  
of Nursing

École des sciences  
infirmières Ingram

# NP COMPETENCY FRAMEWORK - SOURCES



McGill

Ingram School of Nursing | École des sciences infirmières Ingram

# Remember your Handbook!



**McGill**

**Ingram School  
of Nursing**

**École des sciences  
infirmières Ingram**

# Important Reminders

## Academic Integrity

*“[t]he integrity of University academic life and of the degrees the University confers is dependent upon the honesty, integrity and soundness of the teacher-student learning relationship and, as well, that of the assessment process.”* ([McGill Code of Student Conduct & Disciplinary Procedures](#))

Academic Offences include:

- Plagiarism
- Cheating
- Obtaining and/or distributing confidential or copyrighted material



McGill

Ingram School  
of Nursing

École des sciences  
infirmières Ingram

# Important Reminders

## Copyright of materials

- *It is your responsibility to ensure that videos and associated materials are not reproduced or placed in the public domain. This means that each student can use it for their educational (and research) purposes, but they cannot allow others to use it, by putting it up on the Internet or by giving it or selling it to others who may also copy it and make it available. Please refer to McGill's [Guidelines for Instructors and Students on Remote Teaching and Learning](#) for further information.*



McGill

Ingram School  
of Nursing

École des sciences  
infirmières Ingram



# Important Reminders

## Netiquette

- **Same classroom etiquette** applies on-line (proper & respectful language, respect of privacy, share knowledge, show cultural humility, etc.)
- **Be mindful of tone in comments** on discussion boards (avoid capital letters, review before posting)
- **During Zoom classes** – participate actively, open camera if possible and as per instructor, mute self, use raise hands function, be prepared for class, avoid distractions



McGill

Ingram School  
of Nursing

École des sciences  
infirmières Ingram



# Questions?...

We're here for you

[irene.sarasua@mcgill.ca](mailto:irene.sarasua@mcgill.ca)



**McGill**

Ingram School  
of Nursing

École des sciences  
infirmières Ingram