



Ingram School *of Nursing*

RESEARCH REPORT
2020

Ingram School of Nursing *Highlights*

19 million
in new PI & Co-PI funding in 2020 alone

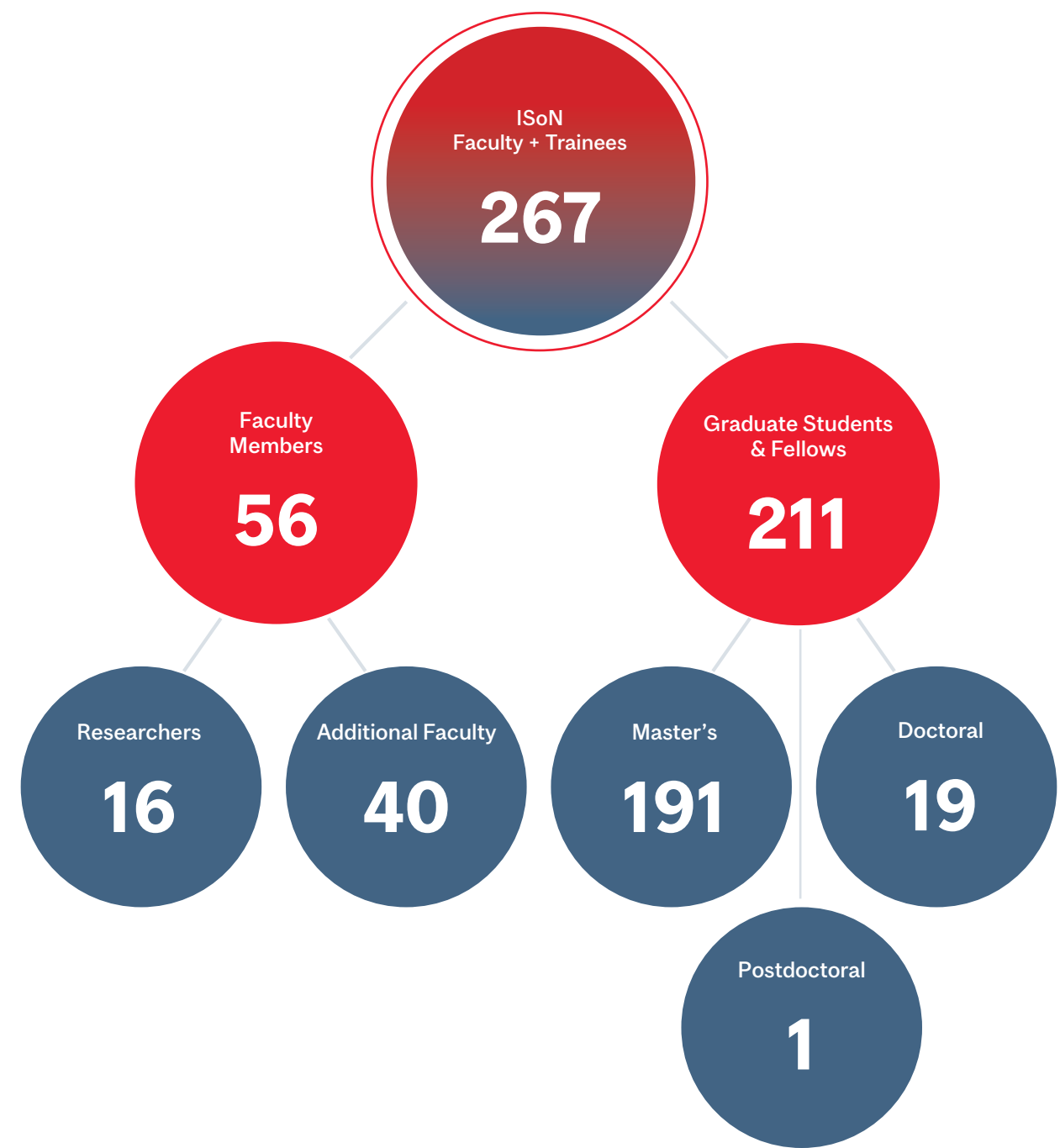
82
Scientific publications

6
Book Chapters

5
Technical Reports

#5
Nursing Program in Canada
(2020 Maclean's Ranking)

Ingram School of Nursing (ISoN) Faculty and Trainees *at a Glance*



Inside this report

Message from Associate Dean and Director	1
Message from ISON Associate Director - Research	2
Our Faculty Researchers	4
Clinically Affiliated Researchers	6
Research Chairs and Fellows	7
Research Career Awards	7
Researcher Highlights of 2020	9
Dialogue McGill feature	10
“Transforming Nurses’ Work Environments Through a Strengths-Based Leadership and Management Training Program”	12
Prestigious recognition of early research career talent: Dr. Marjorie Montreuil and Dr. Andraea Van Hulst	14
Research Funding Awarded in 2020	17
Peer-Reviewed Publications	24
Mission and Value Statements	34
Funding Sponsors and Donors	35

Contributors
 Pierre Dubois
 Joni Dufour
 Nancy Feeley
 Anita J. Gagnon
 Tina Gelsomini
 Laurie Gottlieb
 Daniel Héon
 Christina Kozakiewicz
 Carmen G. Loiselle
 Marika Monarque
 Marjorie Montreuil
 Gilbert Primeau
 Jacqueline Vachon
 Andraea Van Hulst

Graphic Designer
 Julie Roussy

Photographer
 Owen Egan

Address and info
 Ingram School of
 Nursing Research Unit
 Faculty of Medicine
 McGill University
 680 Sherbrooke West,
 Suite 1800
 Montreal, QC, Canada
 H3A 2M7

Connect with us
www.mcgill.ca/nursing/research

[f @McGill Nursing](#)
[t @McGillNursing](#)
[i @McgillNursing](#)



Message from Associate Dean and Director

2020 was a transformative year for so many, and it was, arguably, an especially pivotal year for nurses, as they continue to work on the frontlines of the COVID-19 pandemic.

Now, perhaps more than ever, the need for educated, skilled and capable health professionals is staggering, making the research that underlies the professional practice of nursing all the more vital.

History has taught us that great successes can emerge from overcoming devastating challenges. The COVID-19 pandemic and the struggles that have ensued have certainly reaffirmed our School's commitment to creating environments for students to excel, to innovate, and to be proud ambassadors of the nursing profession. To achieve this, we continue to strive toward our goals of advancing nurse-led research. This greatly depends on the quality of our researchers and students, and ISON is home to some of the best minds in nursing research, and future stars in their respective fields.

I am extremely proud of our faculty researchers who had to change course and adapt quickly to the difficulties presented by COVID-19. Who could have known that the challenges of dealing with an event that occurs every



100 years would come to us on our watch, and during the 100th year of the establishment of our School to boot! I offer each of our faculty researchers my gratitude and my admiration for everything they have accomplished during the past 15 months. Your contributions to nursing research are immeasurable.

Anita J. Gagnon N., MPH, Ph.D.
 Associate Dean and Director
 Ingram School of Nursing
 Faculty of Medicine and Health Sciences

Message from ISoN

Associate Director – Research

2020 and COVID-19 pandemic's impact on ISoN research activities

In March 2020, as the world stopped, so did in-person conference attendance and in-person non-COVID research. Health care professionals including large numbers of nurses became the front line of the century's biggest health crisis. A global cooperative COVID Crisis research initiative emerged to crystallize two tracks of science: COVID critical care best practices, and the fastest vaccine development timeline in history. But the demographics of caregiving had its consequences. In the US, Italy, and Spain, for instance, 72.5% of frontline health care workers infected were women¹, with a significant impact of 'long COVID' among nurses.²



COVID had a secondary impact on global education and research, challenging established norms as stakeholders scrambled against both personal and professional constraints. Yet, in 2020, the ISoN maintained high levels of productivity, obtaining over **\$19 million** in new grant monies, and triggering only slightly fewer scientific publications than in 2018 and 2019. This was due, in part, to an existing backlog of excellent research projects. The full impact of the pandemic will be felt in years to come with COVID-induced slowdown in research further documented.

The COVID Crisis triggered astounding and innovative scientific collaboration modalities. Whether these means of conducting research continue in the months and years ahead remains to be seen. The subtle and not so subtle long-term effects of the pandemic on research activities must be thoroughly documented and addressed. This is particularly important for women scholars who often carry concurrent responsibilities such as caring for children or aging parents while engaged in academic careers from

their home base. Because ISoN includes mostly female researchers, documenting gendered-related impacts on academic productivity is particularly important to ensure the timely mobilization of tangible support networks.

Amidst the numerous challenges brought about in 2020, we should be very proud of ISoN's achievements. I am confident that 2021 will continue to bring productive ways of conducting much-needed research that optimizes processes and outputs while keeping in check the health and wellbeing of our faculty!

Carmen G. Loiselle, N., Ph.D., FCAHS, FCAN
Professor, Associate Director – Research
Ingram School of Nursing and Department of Oncology,
McGill University
Christine and Herschel Victor/Hope & Cope Research
Chair in Psychosocial Oncology
Principal Investigator Dialogue McGill

¹ <https://data.unwomen.org/resources/COVID-19-emerging-gender-data-and-why-it-matters>

² <https://rcni.com/nursing-standard/opinion/comment/data-long-COVID-key-to-protect-nurses-health-175246>



Our Faculty Researchers



Franco Carnevale, N., Ph.D.
Professor

Childhood ethics, the experience of critically ill children and their families, childhood disability, qualitative methodology
franco.carnevale@mcgill.ca



Céline Gélinas, N., Ph.D.
Professor

Critical care nursing, pain assessment, pain management, intervention development, health measurement and psychometrics
celine.gelinas@mcgill.ca



Nancy Feeley, N., Ph.D.
Professor

Neonatal intensive care, parent-infant interaction, parental psychological well-being, complex interventions studies and design
nancy.feeley@mcgill.ca



Laurie Gottlieb, N., Ph.D.
Professor

Development of Strengths-Based Nursing as an approach to practice, leadership/ management and education
laurie.gottlieb@mcgill.ca



Antonia Arnaert, N., Ph.D.
Associate Professor

Digital health technologies, health services research
antonia.arnaert@mcgill.ca



Anita J. Gagnon, N., Ph.D.
Professor, Associate Dean, Faculty of Medicine and Health Sciences, Director, Ingram School of Nursing

Migration, women's health, maternal-child health, public health, health services research, epidemiology, equity, evidence-based clinical practice and policy
anita.gagnon@mcgill.ca



Kelley Kilpatrick, N., Ph.D.
Associate Professor

Advanced practice nursing, team effectiveness and processes, role implementation and evaluation, case studies and mixed methods research
kelley.kilpatrick@mcgill.ca



Sylvie Lambert, N., Ph.D.
Associate Professor

Impact of cancer on patients and family caregivers, psychometric analysis, self-management interventions, patient-reported outcomes
sylvie.lambert@mcgill.ca



Christine Maheu, N., Ph.D.
Associate Professor

Cancer survivorship care, cancer and work, fear of cancer recurrence, clinical trials
christine.maheu@mcgill.ca



Sonia Semenic, N., Ph.D.
Associate Professor, Program Director, Doctoral program

Breastfeeding promotion and support, implementation of evidence-informed practices in perinatal health, cultural diversity
sonia.semenic@mcgill.ca



Mélanie Lavoie-Tremblay, N., Ph.D.
Associate Professor

Retention of nurses, organization of care and work knowledge exchange among managers, participatory action research, orientation for new nurses
melanie.lavoie-tremblay@mcgill.ca



Marjorie Montreuil, N., Ph.D.
Assistant Professor

Mental health nursing, children's services, ethics, participatory research, concept analysis, knowledge mobilization
marjorie.montreuil@mcgill.ca



Argerie Tsimicalis, N., Ph.D.
Associate Professor

Cancer care/oncology, infants/ children, vulnerable/at-risk populations, transitions in care, health information technology
argerie.tsimicalis@mcgill.ca



Carmen G. Loiselle, N., Ph.D., FCAN, FCAHS
Professor, Associate Director - Research

Psychosocial oncology, person-centred cancer care, e-health
carmen.g.loiselle@mcgill.ca



Margaret Purden, N., Ph.D.
Associate Professor

Interprofessional education and practice, cardiovascular care
margaret.purden@mcgill.ca



Andraea Van Hulst, N., Ph.D.
Assistant Professor

Childhood obesity, environment and obesity, associated health behaviours, risk factors in youth with type-1 diabetes
andraea.vanhulst@mcgill.ca



Photo by Owen Egan

Clinically Affiliated Researchers



Alain Biron, N., Ph.D.
McGill University Health Centre
(MUHC)



Christina Clausen, N., Ph.D.
Jewish General Hospital
(CIUSSS Centre Ouest)



Andréa Laizner, N., Ph.D.
McGill University Health Centre
(MUHC)

Photo credit: Pierre Dubois,
MUHC Medical Multimedia Services



Virginia Lee, N., Ph.D.
McGill University Health Centre
(MUHC)



Janet Rennick, N., Ph.D.
The Montreal Children's Hospital of
the McGill University Health Centre
(MUHC)

Photo credit: Daniel Héon,
MUHC Medical Multimedia Services

Research Chairs and Fellows

Nancy Feeley, N., Ph.D., FCAN
Fellow of the inaugural class of
Fellows of the Canadian Academy of
Nursing (FCAN), Canadian Nurses
Association (CNA)(2020-Present)

**Laurie Gottlieb N., Ph.D.,
FCAHS, FCAN**
Fellow of the inaugural class of
Fellows of the Canadian Academy of
Nursing (FCAN), Canadian Nurses
Association (CNA)(2020-Present)

Fellow of the Canadian Academy
of Health Sciences (FCAHS)
(2015-Present)

Flora Madeline Shaw Chair of
Nursing(1996-Present)

Kelley Kilpatrick, N., Ph.D.
Susan E. French Chair in Nursing
Research and Innovative Practice
(2019-2024)

**Carmen G. Loiselle, N., Ph.D.,
FCAHS, FCAN**
Christine & Herschel Victor/Hope &
Cope Chair in Psychosocial Oncology
(2011-2021; renewed 2021-2026)

Fellow of the Canadian Academy
of Health Sciences (FCAHS)
(2019-Present)

Elected Fellow of the inaugural class
of Fellows of the Canadian Academy
of Nursing (FCAN), Canadian Nurses
Association (CNA)(2020-Present)

Research Career Awards

Céline Gélinas, N., Ph.D.
Fonds de recherche du Québec -
Santé (FRQS).
Senior Research Career Salary
Award. Innovation dans l'évaluation
et la gestion de la douleur dans les
unités de soins intensifs (2017-2021)

Kelley Kilpatrick, N., Ph.D.
Fonds de recherche du Québec -
Santé (FRQS).
Research Scholar Junior 2.
L'influence des infirmières
praticiennes sur les processus dans
les équipes de soins et l'amélioration
des résultats de soins des patients
atteints de conditions chroniques
(2017-2021)

Marjorie Montreuil, N., Ph.D.
Fonds de recherche du Québec -
Santé (FRQS).
Bourse en partenariat avec l'Unité
de soutien SRAP du Québec.
Engager les parties prenantes dans
la prévention du suicide : Programme
de recherche sur les soins liés au
suicide et l'éthique chez les enfants
(2020-2024)

Andraea Van Hulst, N., Ph.D.
Fonds de recherche du Québec -
Santé (FRQS).
Research Scholar Junior 1.
Ecological and systems' approaches
to understand and intervene on
multi-contextual determinants of
childhood obesity (2020-2025)

Argerie Tsimicalis, N., Ph.D.
Fonds de recherche du Québec -
Santé (FRQS).
Research Scholar Junior 1. Coûts et
impacts des maladies chroniques
chez les enfants et leur famille
(2019-2023)



Researcher *Highlights of 2020*

1 As Principal Investigator, **DR. FRANCO CARNEVALE** received 5 years of funding from the Newton Foundation in support of the VOICE Childhood Ethics research program, which aims to advance the field of childhood ethics.

2 **DR. NANCY FEELEY, DR. LAURIE GOTTLIEB, and DR. CARMEN G. LOISELLE** were elected as Fellows of the Canadian Academy of Nursing (CAN). CAN recognizes the most accomplished nurses in Canada across all domains of practice.

3 **DR. NANCY FEELEY** received the “Ambassadrice du Palais” award at the Palais des Congrès 2020 Recognition Gala. This Gala pays tribute to the careers of professionals who have played an instrumental role in bringing a major international event to Montréal and the Palais des Congrès.

4 **DR. CÉLINE GÉLINAS** became co-director of Quebec Network on Nursing Intervention Research (RRISIQ). She received 2 CIHR operating grants as PI and Co-I, respectively, for studies on the “Psychological and neurobiological determinants of opioid-related

problems and opioid tapering outcomes among patients with chronic pain prescribed long-term opioid therapy” and “Managing Pain In Collaboration in the ICU (MPIC-ICU): Impact on clinical practices and patient outcomes.” In 2020 **DR. GÉLINAS** was nominated for the prestigious Prix Florence for teaching and research in nursing, which was awarded to her in 2021.

5 **DR. KELLEY KILPATRICK** and her team, including doctoral students, published 12 articles in peer-reviewed journals in 2020. She received funding from the Ministère de la santé et des services sociaux (MSSS) and was named regional laureate of the “Innovation infirmière Banque Nationale” contest presented by the Ordre régional des infirmières et infirmiers de Laurentides/Lanaudière.

6 **DR. SYLVIE LAMBERT** was promoted to the rank of Associate Professor (with tenure) at ISoN.

7 **DR. MÉLANIE LAVOIE-TREMBLAY** obtained a large CIHR grant for her project “Long-Term Care in Crisis: The Reality of COVID-19,” as part of the COVID-19 Rapid Research Funding Opportunity program. Her

paper “Group mentorship programme for graduating nursing students to facilitate their transition: A pilot study” was among the top 10% most downloaded articles in *Journal of Nursing Management* in 2020.

8 **DR. CARMEN G. LOISELLE** became Vice-President of the Canadian Association of Psychosocial Oncology (CAPO). She will be CAPO’s president in 2021.

9 **DR. MARJORIE MONTREUIL** was awarded the Chercheur Boursier Junior 1 salary award by Fonds de recherche du Québec –Santé (FRQ-S) for the project, “Engager les parties prenantes dans la prévention du suicide: Programme de recherche sur les soins liés au suicide et l’éthique chez les enfants.”

10 **DR. ARGERIE TSIMICALIS** was promoted to Associate Professor (with tenure) at ISoN.

11 **DR. ANDRAEA VAN HULST** obtained the Chercheur Boursier Junior 1 salary award from Fonds de recherche du Québec –Santé (FRQ-S) for the project, “Ecological and systems’ approaches to understand and intervene on multi-contextual determinants of childhood obesity.”

Dialogue McGill feature

By Dr. Carmen G. Loiselle (Director, Dialogue McGill) and
Jacqueline Vachon (Associate Director, Dialogue McGill)

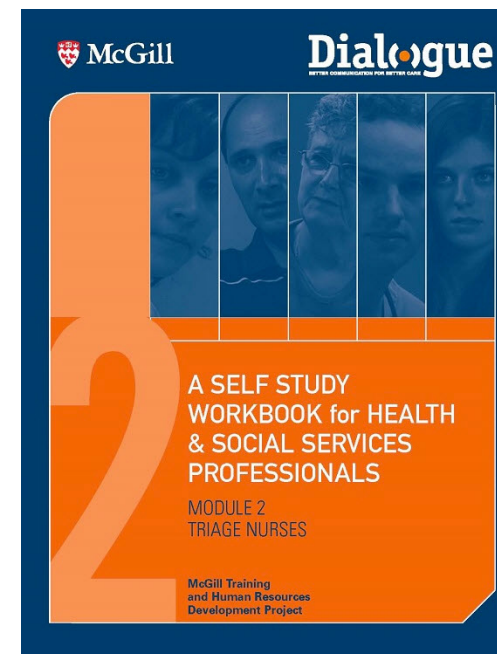
Background and New Leadership

Health Canada is dedicated to enhancing the lives of Canadians and their access to safe and effective health and social services. In 2003, it launched the Official Languages Health Program action plan with a particular focus on training and retention of health and social service professionals. The program also supports activities to ensure that these professionals have the necessary preparation to support official language minority communities. In 2004, McGill University received a large grant from Health Canada and Dialogue McGill was launched (www.mcgill.ca/dialoguemcgill/).

In April 2020, Dr. Carmen G. Loiselle became the Academic Director and Principal Investigator of Dialogue McGill, now housed in the Ingram School of Nursing with funding of \$12M over 2020-2023. Transitioning to a new leadership within a month of the pandemic lockdown created its own unique challenges. Dialogue McGill worked intensively with community and educational partners to come up with creative solutions for recruiting and training students and professionals using social media platforms, teleconferencing training webinars, and posting online language training resources.

Dialogue McGill
Better Communication for Better Care

TRAINING AND RETENTION OF HEALTH PROFESSIONALS PROJECT



Dialogue McGill leads three programs to address official language minorities issues:

1. Language Training Program. In partnership with McGill University's School of Continuing Studies and French Language Centre, free language training courses are offered to professionals based in 12 Integrated Health and Social Services Centres (CISSS), 8 Integrated University Health and Social Services Centres (CIUSSS), and 6 individual hospitals/health clinics. In 2020, Dialogue McGill enrolled more than 1,500 new and returning students in the language courses. Overtime, Dialogue McGill has partnered with McGill University's professional schools, various cégeps, community networks, and other Québec-based organizations to offer additional language learning opportunities via conversational groups, mentorship programs, and professional and student workshops.

2. Recruitment and Retention of Health Care and Social Services Professionals Program. This program seeks to develop and support strategies designed to recruit, employ, and retain bilingual health care and social service professionals across the province of Quebec. This includes partnerships across university professional schools, cégeps, vocational and technical colleges, community networks, and other Quebec-based organizations. Dialogue McGill also offers funding for students on internships and their supervisors and supports 23 community networks that recruit students who are interested in pursuing careers in health and social services. In 2020, Dialogue McGill distributed its 400th student bursary and the Bursary Program continues to receive more applications each year.

3. Research Development Program. The research program supports, consolidates, and expands a growing body of original and interdisciplinary research on equity, quality, and access to health care and social services for linguistic minorities in Quebec. The program meets this overarching goal by supporting research projects and conducting performance evaluations across programs. In 2020, Dialogue McGill funded research from Concordia University, Université de Montréal, Institut national de santé publique du Québec, Université Laval, CIUSSS du Centre-Ouest-de-l'Île-de-Montréal, McGill University Health Centre Research Institute, McGill University and Sherpa University Institute. These projects funded in 2020 resulted in partnerships with 28 organizations, including Local Community Services Centres (CLSCs), CISSS, and CIUSSS.

Future Directions

Dialogue McGill is envisioning more targeted areas for further development including digital language solutions, interactive means to communicate funding opportunities, and more centralization of language learning resources. It is also broadening its outreach activities with more targeted bursaries and research funding to support under-represented groups in Quebec. Special funding calls, for instance, will target initiatives that support vulnerable populations most affected by the pandemic.

To learn more about Dialogue McGill and its funding calls, please visit www.mcgill.ca/dialoguemcgill/ or email: info.dialoguemcgill@mcgill.ca

“Transforming Nurses’ Work Environments Through a Strengths-Based Leadership and Management Training Program”

A CIHR & SSHRC Funded Healthy Productive Work Partnership Grant
Principal Investigator: Dr. Laurie Gottlieb

About the Partnership

In 2018, Dr. Laurie Gottlieb was awarded a major partnership grant involving the Social Sciences and Humanities Research Council of Canada (SSHRC), the Canadian Institutes of Health Research (CIHR), and additional partners’ investment of over \$2 million in a ground-breaking research project entitled “Transforming Nurses’ Work Environments Through a Strengths-Based Leadership and Management Training Program”.

The eight partners include ISoN, the Canadian Nurses Association, CIUSSS du Centre-Ouest-de-l’Île-de-Montréal, CIUSSS de l’Ouest-de-l’Île-de-Montréal, Concordia University, Holland Bloorview Kids Rehabilitation Hospital, The Hospital for Sick Children, and McGill University Health Centre.

The main goal is to create healthier work environments for nurses through the refinement, delivery, and evaluation of the online Strengths-Based Nursing and Healthcare Leadership (SBNH-L) Program with up to 120 healthcare leaders from five participating hospitals.

2020 SBNH Accomplishments

Healthcare Leadership Program

To date, partners have developed and refined the leadership program to assist in empowering managers to lead via a Strengths-Based Nursing and Healthcare Leadership approach, enabling them to access the full scope of their competencies, to create healthier work environments for their teams, and to ultimately enhance the quality of patient care. In 2020, efforts focused on developing a proposal for online delivery of the program’s training modules, mentorship component, and use of stories and story-sharing.

The partners also designed a robust evaluation of the program, including the creation and validation of the SBNH-L scale developed to assess the extent to which nurse managers have developed SBNH leadership behaviours.



Knowledge Mobilization

In 2020, the partners conducted several knowledge mobilization activities, including an international symposium and 13 conference presentations. Most notably, Dr. Gottlieb hosted a special SBNH symposium at The Fifth Commonwealth Nurses and Midwives Conference in London, UK which brought together 10 presenters from 7 institutions across 3 continents. The partners also gave three oral presentations at the 2020 virtual Canadian Health Workforce Conference.

Image to the left: The members of the partnership’s Executive Committee. From left to right: Co-investigator Dr. Bruce Gottlieb, Project Officer Tina Gelsomini, Principal Investigator Dr. Laurie Gottlieb, and Co-investigator Dr. Mélanie Lavoie-Tremblay. Taken by Owen Egan.

Image to the right: Presenters and guests at the SBNH Symposium, 5th Commonwealth Nurses & Midwives Conference, London, UK, March 2020. From left to right: Pam Hubley (SickKids, Toronto), Mélanie Lavoie-Tremblay (McGill, Montreal), Valérie Renoud-Grenier (HESAV, Switzerland), Lindsay Smith (University of Tasmania, Australia), Judith Lapierre (Université Laval, Quebec), Christina Clausen (JGH, Montreal), Annie Chevrier (McGill, Montreal), Jill Maben (University of Surrey, UK), Laurie Gottlieb (McGill, Montreal), Marilyn Ballantyne (Holland Bloorview, Toronto), and Bruce Gottlieb (McGill, Montreal).



Prestigious recognition of early research career talent: Dr. Marjorie Montreuil and Dr. Andraea Van Hulst

Dr. Marjorie Montreuil | Dr. Andraea Van Hulst

Dr. Andraea Van Hulst and Dr. Marjorie Montreuil were both awarded the Fonds de la recherche du Québec en santé (FRQ-S) Junior 1 Chercheur-Boursier in 2020. For this report, we asked them to highlight opportunities and challenges they encountered while preparing their chercheur boursier application.



What does this Chercheur-Boursier career award mean for you and your program of research?

Obtaining this award is an important recognition from the Quebec health research community of the relevance and rigour of our respective research programs. It also represents a commitment to enhance research capacity in Quebec. It is the first milestone of a series of three research career awards from the FRQ-S (Junior 1, 2, and senior). It comes with start-up funds to enable, for instance, preliminary data collection in the preparation of peer-reviewed grant applications and offers funding to students recruited to work with our research team. This award provides salary support which guarantees that 75% of our time is devoted to research.

What is the impact of having protected time for your research?

Protected time ensures that the teaching load is reduced to comply with FRQ-S guidelines, as well as time dedicated to

service. This is crucial in the early years of a researcher as it allows us to dedicate most of our time to set up our team, secure research funds and establish new collaborations.

What did you find most challenging when preparing your FRQ-S application?

This is different from writing a standard research grant application in that what is being asked is to put forward a program of research that includes a series of studies to be completed over 5 years. It requires vision and planning (akin to writing 3 small scale grants) and presenting them in a way that is coherent, that demonstrates how these are interrelated, and how they build on the knowledge gained from one project to the next. The exercise of delineating a 5-year research plan and how this plan fits within the larger research landscape was probably the most challenging, and yet a most insightful exercise.

Because it is crucial that the proposed studies be formulated clearly and tied together into a larger coherent

program of research, we had to be selective in the types of studies that we included. This selection was not easy as we have several ongoing studies that are exciting. One way to still depict the breadth of our program of research is to designate a section 'Ancillary Research Projects' that briefly describes these parallel studies.

What kind of support did you get in the application process?

We both attended information sessions prior to applying, and even attended more than one session over multiple years. These were organised by the Faculty of Medicine and Health Sciences, by ISoN, by the Quebec Network on Nursing Intervention Research, and by university-affiliated Research Centres. At ISoN, we also received support from the Research Unit, namely for reviewing our application (thank you Dr. Loiselle), for completing the Common CV and making sure the requested information was presented according to instructions.

We had access to prior successful applications from nursing colleagues but also from colleagues in other health-related disciplines. Looking over several applications informed and inspired us on how to best prepare our own applications.

One of the most valuable sources of support was from the many different people who read our applications, or specific sections of our applications. These included mentors, senior researchers, and junior researchers who obtained the same career award in the previous years.

Having a strong letter of support from the Associate Dean and Director of ISoN was also key to highlighting the institution's commitment to support junior researchers.

What advice would you have for junior researchers who are preparing a career award application for the first time?

Attend information sessions. Most Universities and Research Centres offer information sessions. We highly recommend attending these, if possible, the year before submitting an application, and again in the months prior to official submission. These sessions offer useful information and tips often provided by seasoned researchers who sit on review panels or are recent awardees.

Identify your mentor(s) early on. For the career award application, you are required to have at least one mentor who is asked to provide a clear and detailed plan on how mentorship will be assured. Mentors should be senior mentors with demonstrated excellence in research. In

some cases, it may be advisable to identify at least two mentors. One may be an expert in your area providing substantive guidance, while the other may be internal to your department/faculty for procedural requirements.

Know when to apply. Depending on the career award competition and on the applicant's profile, there may be more strategic times to apply. In some cases, it may not be required to apply during the first year of employment as research faculty. Waiting until the next year to apply while using that year to work on key aspects of your dossier (e.g., securing PI funding, publications) may be worthwhile. Speak with your Department Chair and mentors to determine whether this may be advisable for you.

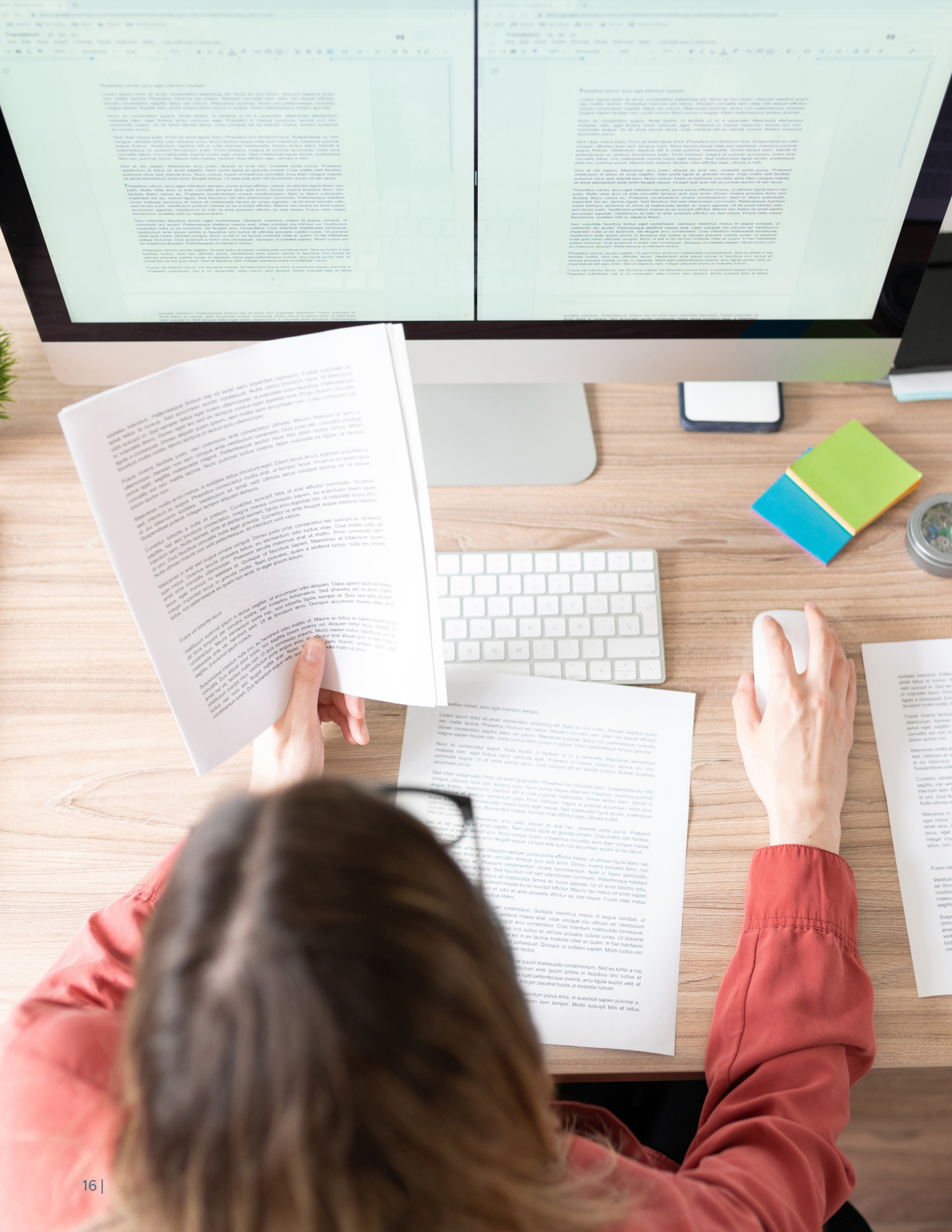
Start preparing early. Not only will this make the whole process more manageable and less stressful, it will also allow for timely feedback on revised versions of the application. Having access to previous successful applications for the same competition is extremely helpful.

Seek input from mentors, other academics and networks. Feedback from mentors, colleagues and friends is crucial, ideally from people in your area of research but also from other areas. Ask people who you know will provide critical feedback. Make sure to give your mentors enough time to provide feedback, and yourself enough time to integrate their feedback. We have found it useful to schedule meetings with our mentors to discuss the feedback received.

Balance funded projects with highly fundable projects. Your program of research should include some projects for which funding has already been secured. You can include projects for which there is no funding yet but make sure to demonstrate that you have a clear and realistic plan to secure funding.

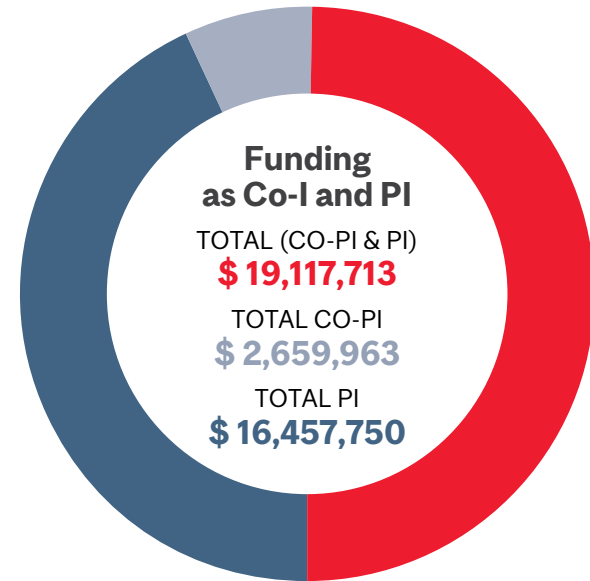
Craft the program of research as a unified whole. Presenting the application as a coherent and unified program of research is key. Making explicit links across the projects and tying together their significance will help reviewers appreciate the importance of what you are proposing. In other words, make sure the final product is well packaged.

Have fun! With the hectic schedules we have as researchers, we seldom have time to think about the bigger picture and plan for the upcoming 5 years. Preparing a career award application implies dedicating time for this. Enjoy this time as it is precious and rewarding.

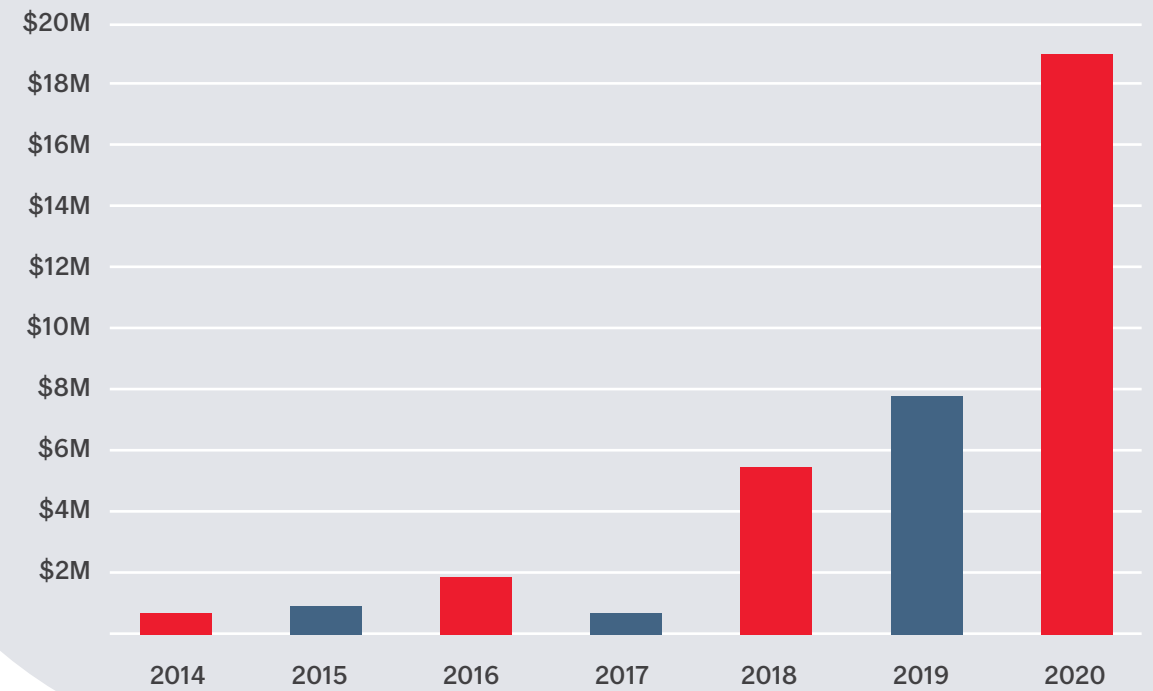


Research Funding Awarded

Active Funding in 2020
(not including grants awarded in 2020)
\$86,404,065



New Research Funding as PI/Co-PI



Research Funding Awarded in 2020

Legend: **ISoN Faculty Researcher**

Role	Investigators	Sponsor	Program	Title of Research Project	Awarded	Duration
Principal Investigator	Arnaert, A. & Debe, Z.	McGill University Office of Innovation and Partnerships	I + P Partnership Program	Prototype Development and Testing of a "Virtual Clinical Learning Environment" for Unregulated Healthcare Aides to enhance their Skills and Competencies	\$ 81,750	2020-2021
Principal Investigator	Baumann, A., Berta, W., Laporte, A., Bourgeault, I., Lavoie-Tremblay, M. , Deber R., Robin, B., & Kumi, O.	Canadian Institutes of Health Research (CIHR)	Health Services and Policy Research	Long term Care in crisis- The reality of COVID-19	\$ 959,328	2020-2021
Co-Investigator	Bernard, L., Biron, A., Lavoie-Tremblay, M. , Bernard, A., Richard, L. & Clavel, N.	Institut de recherche Robert-Sauvé en santé et en sécurité du travail (IRSST)	Concours Projets Spéciaux sur le développement de solutions ou l'avancement de connaissances touchant la SST en contexte de la pandémie COVID-19	Analyse de la culture de sécurité et des risques biologiques pour les infirmières durant la pandémie COVID-19	\$ 98,224	2020-2021
Co-Investigator	Camden, C., Malboeuf-Hurtubise, C., Roberge, P., Généreux, M., Lane, J., Jasmin, E., Kalubi, J.-C., Bussièrès, E., Chadi, N., Montreuil, M. , Gorter, J.W., Shikako-Thomas, K., Tremblay, K., & Roy, J.	Canadian Institutes of Health Research (CIHR)	CIHR Knowledge Synthesis Operating Grant: COVID-19 Rapid Research Funding Opportunity in Mental Health and Substance Use	Quelles sont les répercussions de la pandémie du COVID-19 sur la santé mentale des enfants de 5-12 ans, et quels sont les enjeux particuliers pour les enfants handicapés ou ayant une maladie chronique ? Une scoping review des problématiques vécues et des pistes d'intervention prometteuse	\$ 50,000	2020
Principal Investigator	Carnevale, F.	Newton Foundation	N/A	VOICE Childhood Ethics research program	\$ 1,100,000	2020-2025

Principal Investigator	Chênevert, D., Loiselle, C. G. , Lynn Dobkin, P., Bilodeau, K., Poitras, J., Pomey, M.-P., Truchon, M., Roch, G., Colombat, P., Braithwaite, J., Thibeault, R., Leclerc, J.-M., Rondeau, A., Jacob, R., Brunet, L., Roman, S., Prévost, C., Dumez, V., L'Espérance, A., Diaconescu, R., Rabeau, F., & Vachon, M.-F.	Social Sciences and Humanities Research Council (SSHRC)	Insight Grants	Le rôle de la résilience sur la santé et le bien-être des équipes interprofessionnelles: validation d'une démarche managériale participative	\$ 249,250	2020-2025
Co-Investigator	Dubois, C.-A., Borgès da Silva, R., Marchand A., Bentein K., Gilbert, F., & Lavoie-Tremblay, M.	Fonds de la recherche en santé du Québec (FRSQ)	Proposition de projets Solutions COVID-19	Mesurer et atténuer les effets négatifs de la COVID-19 sur les travailleurs de santé	\$ 300,000	2020-2021
Principal Investigator	Gagnon, A.	Health Canada	Health Care Access for Linguistic Minorities (HCALM)	Increasing French Language Proficiency at the Ingram School of Nursing: Evaluating the Impact of a French Proficiency Requirement for Admissions	\$ 30,000	2020 - 2022
Principal Investigator	Gélinas, C. , De Marchie, M., Dubé, J. N., Houle, J., Kilpatrick, K. , Laizner, A., Lavoie, P., Morin, S., Purden, M. , & Wang, H. T.	JGH Collaborative, Jewish General Hospital	JGH Collaborative Grant	Perceptions of the healthcare workforce, patients and families in designated intensive care units on their preparedness and coping during the COVID-19 pandemic: Lessons learned to inform future directions	\$ 50,000	2020 - 2022
Principal Investigator	Gélinas, C. , Laporta, D., Amaral, A., Bernard, F., Bérubé, M., Burry, L., Charbonney, E., Choinière, M., Dubé, J. N., Houle, J., Lavoie-Tremblay, M. , Milhomme, D., Morin, S., Perreault, M., Purden, M. , Rochefort, C., Rose, L., Scales, D., Thiffault, N., Tousignant-Laflamme, Y., & Williamson, D.	Canadian Institutes of Health Research (CIHR)	Project Grant	Managing Pain In Collaboration in the ICU (MPIC-ICU): Impact on clinical practices and patient outcomes	\$ 684,674	2020 - 2024

Principal Investigator	Gélinas, C. , Richebé, P., Gallani, M.C., Laporta, D., Richard-Lalonde, M., Shahiri, S, & Wang, H. T.	Canadian Institutes of Health Research (CIHR)	Project Grant	Validation of a new multi-parameter technology to better diagnose pain in the adult intensive care population: The Nociception Level (NOL) Index	\$ 524,024	2020 - 2024
Principal Investigator	Gottlieb, L.	McGill Nursing Collaborative (JGH)	Project Grant	Nursing Stories: Storytelling and Story-sharing During COVID-19 Pandemic of 2020	\$ 50,000	2020-2021
Co-Investigator	Harley, J., Pottle, J., Eling, R., Lajoie S., Fried G., Marchand H., & Lavoie-Tremblay, M.	Social Sciences and Humanities Research Council (SSHRC)	SSHRC Partnership Engage Grant	Leveraging Virtual Simulation Technology as a Distance Learning Tool to Support Medical and Nursing Students during COVID-19	\$ 24,979	2020-2021
Co-Investigator	Henderson, M., Bigras, J.L., Barnett, T., Drouin, O., Mathieu, M.E., & Van Hulst, A.	Canada's Children's Hospital Foundations (CCHF)	Sun Life Meant 2 Prevent - A type 2 diabetes prevention initiative for children and youth	Integration of user-friendly technology in a pediatric weight management program to increase patient engagement.	\$ 54,500	2020-2021
Principal Investigator	Kilpatrick, K. , Riverin, B., Tchouaket, E., Francoeur, L., Cyr, G., & Jabbour, M.	Ministère de la santé et des services sociaux	Direction générale des affaires universitaires	Comprendre les facteurs qui soutiennent le maintien à domicile et le décès à domicile des personnes en fin de vie : étude séquentielle à méthodes mixtes.	\$300,000	2020-2022
Principal Investigator	Lambert, S. D. & Duncan, L.	McGill Nursing Collaborative (ISoN)	McGill Nursing Collaborative Open-Access Publication Competition	A study protocol for a multi-centre randomized pilot trial of a dyadic, tailored, web-based, psychosocial and physical activity self-management program (TEMPO) for men with prostate cancer and their caregivers	\$3,000	2020
Principal Investigator	Loiselle, C. G. , Cook, E., Breiner, S., Berlin, C., & Batist, G.	Roche	Research Contract	Supporting individuals diagnosed with cancer and COVID-19: A pilot study using remote technology	\$108,350	2020-2021
Principal Investigator	Loiselle, C. G. , Cook, E., Breiner, S., Berlin, C., & Batist, G.	Hope & Cope	Research Contract	Supporting individuals diagnosed with cancer and COVID-19: A pilot study using remote technology	\$ 20,000	2020-2021

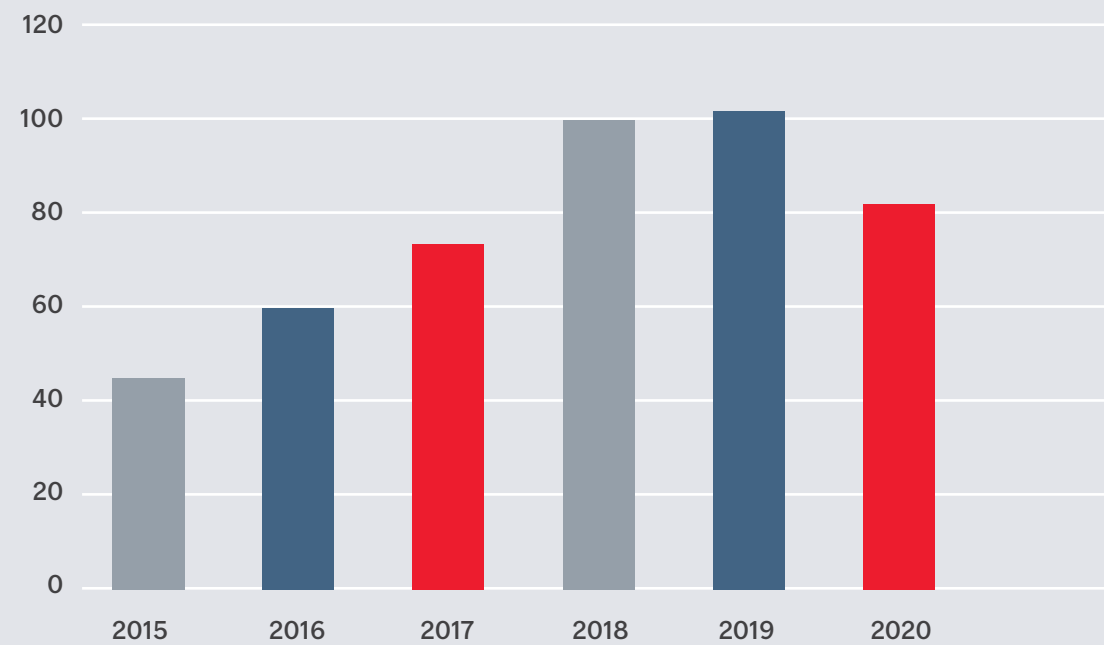
Principal Investigator	Loiselle, C.G.	Health Canada	Dialogue McGill	Training and Retention of Health Professionals	\$12,000,000	2020-2023
Principal Investigator	Maheu, C. , & Parkinson, M.	Canadian Partnership Against Cancer	Cancer Strategic Plan 2017-2023	E-course on return to work of cancer survivors for primary care providers	\$ 50,000	2020-2022
Principal Investigator	Maheu, C. , & Parkinson, M.	McGill University Health Center Foundation	Sponsor	Cancer and Work Website	\$3,000	2020-2021
Co-Investigator	Martel, M. O., Gélinas, C. , Choinière, M., Guénette, L. A., Page, G., Perreault, M., Roy, M., & Vachon-Presseau, E.	Canadian Institutes of Health Research (CIHR)	Project Grant	Psychological and neurobiological determinants of opioid-related problems and opioid tapering outcomes among patients with chronic pain prescribed long-term opioid therapy	\$504,901	2020 - 2024
Co-Investigator	McCusker, J., Lambert S.D. , Haggerty J., Meguerditchian, A., & Pineault, M.	Foundation for Advancing Family Medicine (FAFM)	COVID-19 Pandemic response and Impact Grant Program (Co-RIG) - Phase I	Assisting family physicians with gaps in mental health care generated by the COVID-19	\$ 114,872	2020-2021
Co-Investigator	Meterrisian, S., Maheu, C. , Lee, V., & Blondin, S.	Quebec Breast Cancer Foundation	Breast Cancer Support & Education Fund 1 Million to Improve Care	Adjustment to Life After Breast Cancer Treatment: Can a Life-Coach Make a Difference?	\$ 100,000	2020-2022
Principal Investigator	Montreuil, M.	Fonds de recherche du Québec - Santé (FRQS)	Fond d'établissement, Fonds de recherche du Québec - Santé	Engager les parties prenantes dans la prévention du suicide : Programme de recherche sur les soins liés au suicide et l'éthique chez les enfants	\$ 80,000	2020-2024
Principal Investigator	Montreuil, M. , Bogossian, A., Camden, C., Genest, C., Gilbert, E., Piché, G., & Rassy, J.	Canadian Institutes of Health Research (CIHR)	CIHR Knowledge Synthesis Operating Grant: COVID-19 Rapid Research Funding Opportunity in Mental Health and Substance Use	Supporting children and adolescents' mental health in the context of pandemic and confinement: A scoping review of interventions and ethical challenges	\$ 49,628	2020

Co-Investigator	Moon, J., Boutros, M., Loiselle, C. G. ... Garfinkle, R.	Society of American Gastrointestinal and Endoscopic Surgeons (SAGES)	Research Grant	Interactive Online Informational and Peer Support Application for Patients with Low Anterior Resection Syndrome: A Multicenter Randomized Controlled Trial	\$ 30,000	2020-2021
Co-Investigator	Moon, J., Loiselle, C. G. ... Boutros, M.	Canadian Society of Colon and Rectal Surgeons	N/A	Interactive Online Informational and Peer Support Application for Patients with Low Anterior Resection Syndrome: A Multicenter Randomized Controlled Trial.	\$ 10,000	2020-2021
Co-Investigator	Pomey, M.P.... Lavoie-Tremblay M. et al.	Canadian Institutes of Health Research (CIHR)	Operating Grant: COVID-19 May 2020 Rapid Research Funding Opportunity	Real-time evaluation of the deployment of connected technologies and the care and service partnership during the COVID-19 health crisis -- The Techno-COVID-Partnership Program	\$ 502,487	2020-2021
Co-Investigator	Stockdale, C., Maheu, C. , & Parkinson, M.	Employment and Social Development Canada (ESDC)	National Workplace Accessibility Stream of the Opportunities Fund for Persons with Disabilities	The COVID-19 Accessibility Resources for Employers (CARE) Program	\$ 810,000	2020-2021
Co-Investigator	Stockdale, C., Maheu, C. , & Parkinson, M.	Employment and Social Development Canada (ESDC)	Social Development Partnerships Program: Disability Component	COVID-19 and Return-to-Work for People with Disabilities: An E-curriculum for Canadian Employers	\$ 40,000	2020-2022
Co-Investigator	Tchouaket, E., Borgès Da Silva, R., Kilpatrick, K. , Sia, D., Beogo, I., Letourneau, J., Robins, S., Boivin, S., Dubreuil, B., Carrière, R., Simard, M., Boissonneault, K., Mercier, N., Pilote, M., Parisien, N., Soucy, C., Galarneau, L. A., & Wann, P.	Réseau de recherche en interventions en sciences infirmières du Québec (RRISIQ)	Concours collaboration bi-réseaux RRISIQ- Réseau de connaissances en services et soins de santé intégrés de première ligne (Le Réseau-1) Québec (Spring 2020)	Validation et mise à l'essai d'une grille pour la mesure des coûts de la gestion de la COVID-19 dans les centres d'hébergement de soins de longue durée au Québec	\$ 20,000	2020-2022

Principal Investigator	Van Hulst, A. , Henderson, M., & Barnett, T.	Diabète Québec	Diabète Québec Subventions de recherche	Caractéristiques du voisinage résidentiel et facteurs de risque pour les maladies cardiovasculaires chez les jeunes avec un diabète de type 1 : l'étude eco-CARDEA	\$ 20,000	2020
Principal Investigator	Van Hulst, A. , Henderson, M., Barnett, T., Buthieu, M., Drouin, O., & Mathieu, M.-E.	Réseau de recherche en interventions en sciences infirmières du Québec (RRISIQ)	Inter-network initiatives	Integration of technologies in a pediatric lifestyle behavior modification and weight management program to increase patient engagement: a pilot study.	\$ 20,000	2020-2021
Principal Investigator	Van Hulst, A. , Morrison, K., Ross, N., & Thabane, L.	Canadian Institutes of Health Research (CIHR)	Operating Grant - Data Analysis Using Existing Databases and Cohorts	Neighbourhood environments and weight management outcomes in the Canadian Pediatric Weight Management Registry.	\$ 74,746	2020-2021

Peer-Reviewed Publications

From 82 publications in 2020, 41 included a student as author (with 22 of these with a student as first author).



*Note: Lower publication output in 2020 potentially related to researchers' challenges encountered during the COVID-19 pandemic



Peer-Reviewed Publications cont.

Legend: **ISoN Faculty Researcher**, **Research Trainee (Current or Past)**

Note: Duplicate publications have been removed from the publication list

1. Antonacci, R., Curiale, L., MacMillan, K., & **Tsimicalis, A.** (2020, Accepted). Exploring student nurses' experiences in the anatomy lab to optimize their learning. *Journal of Nursing Education*.
2. **Arnaert, A., Ahmad, H.,** Ponzoni, N., Oliver, C., & Grugel-Park, A. (2020). Blending learning: The preferred choice of clinical nurse educators to provide continuing professional development. *Journal of Nursing Education and Practice*, 10(1), 58-66.
3. **Arnaert, A.,** Ponzoni, N., Debe, Z., **Castonguay, A.,** & Frunchak, V. (2020, Accepted). Clinical nurse educators' perceptions of using eLearning for the provision of professional development to nurses in a tertiary care hospital. *Quality Advancement in Nursing Education*.
4. **Arnaert, A. L.,** Ponzoni, N., Debe, Z., Meda, M. M., Nana, N. G., & Arnaert, S. (2020). Experiences of midwives and community health workers using mHealth to improve services to pregnant women in rural Burkina Faso, Africa. *Journal of Nursing Education and Practice*, 10(3), 57-64.
5. Arroyo-Novoa, C. M., Figueroa-Ramos, M. I., Puntillo, K. A., & **Gélinas, C.** (2020). Translation into Spanish and cultural adaptation of the Critical-Care Pain Observation Tool. *American Journal of Critical Care*, 29(3), 226-232.
6. Austin, S., Fernet, C., Trépanier, S. G., & **Lavoie-Tremblay, M.** (2020). Fatigue in new registered nurses: A 12-month cross-lagged analysis of its association with work motivation, engagement, sickness absence and turnover intention. *Journal of Nursing Management*, 28(3), 606-614.
7. Bartlett, S. J., **Lambert, S. D.,** McCusker, J., Yaffe, M., de Raad, M., Belzile, E., Ciampi, A., Di Carlo, M., & Lyddiatt, A. (2020). Self-management across chronic diseases: Targeting education and support needs. *Patient Education and Counseling*, 103(2), 398-404.
8. **Boitor, M.,** Ballard, A., Emed, J., Le May, S., & **Gélinas, C.** (2020). Risk factors for severe opioid-induced respiratory depression in hospitalized adults: A case-control study. *Canadian Journal of Pain*, 4(1), 103-110.
9. Brehaut, E., Neupane, D., Levis, B., Wu, Y., Sun, Y., Krishnan, A., He, C., Bhandari, P. M., Negeri, Z., Riehm, K. E., Rice, D. B., Azar, M., Yan, X. W., Imran, M., Chiovitti, M. J., Saadat, N., Cuijpers, P., Ioannidis, J. P. A., Markham, S., ... **Loiselle, C. G.,** ... Thombs, B. D. (2020). Depression prevalence using the HADS-D compared to SCID major depression classification: An individual participant data meta-analysis. *Journal of Psychosomatic Research*, 139, 110256.
10. Campbell, S., & **Carnevale, F. A.** (2020). Injustices faced by children during the COVID-19 pandemic and crucial next steps. *Canadian Journal of Public Health*, 111(5), 658-659.
11. Campbell, S., **Cicero Oneto, C.,** Saini, M. P. S., Attaran, N., **Makansi, N., Passos Dos Santos, R.,** Pukuma, S., & **Carnevale, F. A.** (2020). Impacts of the COVID-19 pandemic on children: An ethical analysis with a global-child lens. *Global Studies of Childhood*, 11(1), 105-114.
12. **Carnevale, F. A.** (2020). A "thick" conception of children's voices: A hermeneutical framework for childhood research. *International Journal of Qualitative Methods*, 19, 1609406920933767.
13. **Carnevale, F. A.** (2020). Moral distress in the ICU: It's time to do something about it! *Minerva Anestesiologica*, 86(4), 455-460.
14. **Castro, A. R.,** Marinello, J., Chougui, K., Morand, M., Bilodeau, C., & **Tsimicalis, A.** (2020). The day-to-day experiences of caring for children with osteogenesis imperfecta: A qualitative descriptive study. *Journal of Clinical Nursing*, 29(15-16), 2999-3011.
15. **Castro, A. R., & Tsimicalis, A.** (2020). Beware of discharge: A case exploring the ethics of societal expectations placed on families at hospital discharge. *Home Healthcare Now*, 38(2), 98-104.
16. Chanques, G., Constantin, J. M., Devlin, J. W., Ely, E. W., Fraser, G. L., **Gélinas, C.,** Girard, T. D., Guérin, C., Jabaudon, M., Jaber, S., Mehta, S., Langer, T., Murray, M. J., Pandharipande, P., Patel, B., Payen, J. F., Puntillo, K., Rochweg, B., Shehabi, Y., Strøm, T., Olsen, H. T., & Kress, J. P. (2020). Analgesia and sedation in patients with ARDS. *Intensive Care Medicine*, 46(12), 2342-2356.
17. **Chen, Q., Gottlieb, L.,** Liu, D., Tang, S., & Bai, Y. (2020). The nurse outcomes and patient outcomes following the High-Quality Care Project. *International Nursing Review*, 67(3), 362-371.
18. Chougui, K., Addab, S., Palomo, T., Morin, S. N., Veilleux, L.-N., Bernstein, M., **Thorstad, K.,** Hamdy, R., & **Tsimicalis, A.** (2020). Clinical manifestations of osteogenesis imperfecta in adulthood: An integrative review of quantitative studies and case reports. *American Journal of Medical Genetics Part A*, 182(4), 842-865.
19. Corbière, M., Mazaniello-Chézol, M., Bastien, M.-F., Geoffrion, S., Briand, C., **Lavoie-Tremblay, M.,** Hurtubise, A., & Tanguay, P. (2020). Enjeux et solutions en santé mentale et travail : Le point de vue des gestionnaires d'une grande organisation de santé. *Santé mentale au Québec*, 45(1), 147-181.
20. Covell, C. L., Sands, S. R., Ingraham, K., **Lavoie-Tremblay, M.,** Price, S. L., Reichert, C., & Bourgeault, I. L. (2020). Mapping the peer-reviewed literature on accommodating nurses' return to work after leaves of absence for mental health issues: a scoping review. *Human Resources for Health*, 18(1), 36.
21. Dodek, P. M., Cheung, E. O., Burns, K. E., Martin, C. M., Archambault, P. M., Lauzier, F., Sarti, A. J., Mehta, S., Fox-Robichaud, A. E., Seely, A. J. E., Parshuram, C., Garros, D., Withington, D., Cook, D. J., Piquette, D., **Carnevale, F. A.,** Boyd, J. G., Downar, J., Kutsogiannis, D. J., Chassé, M., Fontela, P., Fowler, R. A., Bagshaw, S., Dhanani, S., Murthy, S., Gehrke, P., & Fujii, T. (2020). Moral distress and other wellness measures in Canadian critical care physicians. *Annals of the American Thoracic Society*.
22. Dubois, C.-A., Borgès Da Silva, R., **Lavoie-Tremblay, M.,** Lespérance, B., Bentein, K., Marchand, A., Soldera, S., **Maheu, C.,** Grenier, S., & Fortin, M.-A. (2020). Developing and maintaining the resilience of interdisciplinary cancer care teams: an interventional study. *BMC Health Services Research*, 20(1), 1039.
23. **Feeley, N.,** Robins, S., **Genest, C.,** Stremler, R., Zekowitz, P., & Charbonneau, L. (2020). A comparative study of mothers of infants hospitalized in an open ward neonatal intensive care unit and a combined pod and single-family room design. *BMC Pediatrics*, 20(1), 38.
24. Fernet, C., Litalien, D., Morin, A. J. S., Austin, S., Gagné, M., **Lavoie-Tremblay, M.,** & Forest, J. (2020). On the temporal stability of self-determined work motivation profiles: a latent transition analysis. *European Journal of Work and Organizational Psychology*, 29(1), 49-63.
25. Fernet, C., Morin, A. J. S., Austin, S., Gagné, M., Litalien, D., **Lavoie-Tremblay, M.,** & Forest, J. (2020). Self-determination trajectories at work: A growth mixture analysis. *Journal of Vocational Behavior*, 121, 103473.
26. Fitch, M., Ouellet, V., Pang, K., Chevalier, S., Drachenberg, D. E., Finelli, A., Lattouf, J.-B., **Loiselle, C.,** So, A., Sutcliffe, S., Tanguay, S., Saad, F., & Mes-Masson, A.-M. (2020). Comparing perspectives of Canadian men diagnosed with prostate cancer and health care professionals about active surveillance. *Journal of Patient Experience*, 7(6), 1122-1129.
27. **Frechette, J.,** Bitzas, V., Aubry, M., **Kilpatrick, K., & Lavoie-Tremblay, M.** (2020). Capturing lived experience: Methodological considerations for interpretive phenomenological inquiry. *International Journal of Qualitative Methods*, 19, 1609406920907254.
28. **Frechette, J.,** Bitzas, V., **Kilpatrick, K.,** Aubry, M., & **Lavoie-Tremblay, M.** (2020). A hermeneutic-phenomenological study of paediatric intensive care unit nurses' professional identity following hospital redesign: Lessons learned for managers. *Journal of Nursing Management*, 28(4), 872-880.

29. **Fréchette, J., & Carnevale, F. A.** (2020). Exploring a hermeneutic perspective of nursing through revisiting nursing health history. *Nursing Philosophy, 21*(2), e12289.
30. **Fréchette, J., Lavoie-Tremblay, M., Aubry, M., Kilpatrick, K., & Bitzas, V.** (2020). Major hospital transformations: An integrative review and implications for nursing. *Journal of Nursing Education and Practice, 10*(7), 46-52.
31. **Fréchette, J., Lavoie-Tremblay, M., Kilpatrick, K., & Bitzas, V.** (2020). When the paediatric intensive care unit becomes home: A hermeneutic-phenomenological study. *Nursing in Critical Care, 25*(3), 140-148.
32. **Galica, J., Giroux, J., Francis, J. A., & Maheu, C.** (2020). Coping with fear of cancer recurrence among ovarian cancer survivors living in small urban and rural settings: A qualitative descriptive study. *European Journal of Oncology Nursing, 44*, 101705.
33. **Galica, J., Saunders, S., Romkey, C., Ethier, J., Giroux, J., Jull, J., Maheu, C., Ross-White, A., Stark, D., & Robb, K.** (2020, Accepted). The needs of gynecological cancer survivors and their caregivers: A scoping review and proposed framework for survivorship care. *Gynecological Oncology*.
34. Garfinkle, R., **Loiselle, C. G.**, Park, J., Fiore Jr, J. F., Bordeianou, L. G., Liberman, A. S., Morin, N., Faria, J., Ghitulescu, G., Vasilevsky, C.-A., Bhatnagar, S. R., & Boutros, M. (2020). Development and evaluation of a patient-centred program for low anterior resection syndrome: protocol for a randomized controlled trial. *BMJ Open, 10*(5), e035587.
35. **Garland, R., Ahmed, S., & Loiselle, C. G.** (2020). Taking control over our health: Empowerment as perceived by young adults living with advanced cancer. *Canadian oncology nursing journal, 30*(2), 93-102.
36. Hallward, L., **Chemtob, K., Lambert, S. D., & Duncan, L. R.** (2020). Prostate cancer survivors' and caregivers' experiences using behavior change techniques during a web-based self-management and physical activity program: A qualitative study. *Journal of clinical medicine, 9*(10), 3244.
37. **Hudson, E., Arnaert, A., & Lavoie-Tremblay, M.** (2020, Accepted). Healthcare professional disclosure of mental illness in the workplace: a rapid scoping review. *Journal of Mental Health*.
38. **Kilpatrick, K., Paquette, L., Jabbour, M., Tchouaket, E., Fernandez, N., Al Hakim, G., Landry, V., Gauthier, N., Beaulieu, M.-D., & Dubois, C.-A.** (2020). Systematic review of the characteristics of brief team interventions to clarify roles and improve functioning in healthcare teams. *PLoS One, 15*(6), e0234416.
39. **Kilpatrick, K., Tchouaket, É., Jabbour, M., & Hains, S.** (2020). A mixed methods quality improvement study to implement nurse practitioner roles and improve care for residents in long-term care facilities. *BMC Nursing, 19*(1), 6.
40. **Košir, U., Denis-Larocque, G., Tsimicalis, A., Freeman, C., Turcotte, R. E., Cury, F., Alcindor, T., & Goulding, K.** (2020). Psychological functioning, coping styles and their relationship to appraisal of physical limitations following invasive surgical procedures for soft-tissue sarcoma: A qualitative study. *Journal of Surgical Oncology, 121*(8), 1266-1275.
41. **Lambert, S. D., Coumoundouros, C., Hulbert-Williams, N. J., Shaw, J., & Schaffler, J.** (2020). Building the capacity for psycho-oncology research: a survey of the research barriers and training needs within the International Psycho-Oncology Society. *Journal of Psychosocial Oncology Research and Practice, 2*(3).



42. **Lambert, S. D.**, Duncan, L. R., Ellis, J., Schaffler, J. L., Loban, E., Robinson, J. W., Culos-Reed, N., Matthew, A., Clayberg, K., Santa Mina, D., Goldberg, L., Pollock, P., Tanguay, S., Kassouf, W., Saha-Chaudhuri, P., Peacock, S., & Katz, A. (2020). Acceptability and usefulness of a dyadic, tailored, web-based, psychosocial and physical activity self-management program (TEMPO): A Qualitative Study. *Journal of clinical medicine*, 9(10).
43. **Lambert, S.**, Loban, E., Li, J., Nghiem, T., **Schaffler, J.**, **Maheu, C.**, Dubois, S., Folch, N., Gélinas-Phaneuf, E., Rosenberg, E., & Laizner, A. (2020, Accepted). Chronic illness management in culturally and linguistically diverse patients: Exploring the needs, access, and understanding of information. *Qualitative Health Research*.
44. **Landry, V.**, **Kilpatrick, K.**, **Paquette, L.**, Jabbour, M., Beaulieu, M.-D., Dubois, C.-A., Tchouaket, E., & Gauthier, N. (2020). L'étendue du rôle de l'infirmière praticienne spécialisée en soins de première ligne dans différents milieux de pratique au Québec : une étude de temps et mouvements. *Science of Nursing and Health Practices - Science infirmière et pratiques en santé*, 3(1).
45. Lavoie, P., Clarke, S. P., Clausen, C., **Purden, M.**, Emed, J., Cosencova, L., & Frunchak, V. (2020). Nursing handoffs and clinical judgments regarding patient risk of deterioration: A mixed-methods study. *Journal of Clinical Nursing*, 29(19-20), 3790-3801.
46. Lavoie, P., Clarke, S. P., Clausen, C., **Purden, M.**, Emed, J., Mailhot, T., Fontaine, G., & Frunchak, V. (2020). Nurses' judgments of patient risk of deterioration at change-of-shift handoff: Agreement between nurses and comparison with early warning scores. *Heart & Lung: The Journal of Cardiopulmonary and Acute Care*, 49(4), 420-425.
47. **Lavoie-Tremblay, M.**, Filion, F., **Aubé, T.**, Cyr, G., & Laporte, G. (2020). The perceptions of community-based organizations collaborating with nursing faculty to promote students' public health nursing competencies. *Journal of Nursing Education and Practice*, 10(8), 58-65.
48. **Lavoie-Tremblay, M.**, Sanzone, L., **Aubé, T.**, Bigras, C., Cyr, G., & Primeau, G. (2020). A university/healthcare institution mentorship programme: Improving transition to practice for students. *Journal of Nursing Management*, 28(3), 586-594.
49. **Loiselle, C. G.**, **Attieh, S.**, Cook, E., Tardif, L., Allard, M., Rousseau, C., Thomas, D., Saha-Chaudhuri, P., & Talbot, D. (2020). The nurse pivot-navigator associated with more positive cancer care experiences and higher patient satisfaction. *Canadian oncology nursing journal*, 30(1), 48-53.
50. **Loiselle, C. G.**, & **Brown, T. L.** (2020). Increasing access to psychosocial oncology services means becoming more person-centered and situation-responsive. *Support Care Cancer*, 28(12), 5601-5603.
51. **Montreuil, M.**, Séguin, M., Gros, C., & Racine, E. (2020). Survey of mental health care providers' perspectives on the everyday ethics of medical-aid-in-dying for people with a mental illness. *Canadian Journal of Bioethics/Revue Canadienne De bioéthique*, 3(1), 152-163.
52. **Ma, K.**, Wright, D. K., Vanderspank-Wright, B., Peterson, W. E., & **Carnevale, F. A.** (2020). Nurses' moral experiences of ethically meaningful end-of-life care: Distress, resilience, responsibility, and care. *Research and Theory for Nursing Practice*, 34(3), 269-285.
53. MacKinnon, A. L., **Feeley, N.**, Gold, I., Hayton, B., King, L., Nagy, C., Robins, S., Turecki, G., & Zolkowitz, P. (2020). The interaction between oxytocin receptor gene methylation and maternal behavior on children's early theory of mind abilities. *Development and Psychopathology*, 32(2), 511-519.
54. **Maheu, C.**, Zanchetta, M. S., Gebremariam, A. G., & Lam-Kin-Teng, M. R. (2020). Toronto's Portuguese-speaking community potential for creating a social support networks for breast cancer. *Revista Eletrônica De Enfermagem*, 22(56605), 1-9.
55. McCusker, J., Yaffe, M., **Lambert, S. D.**, Cole, M., de Raad, M., Belzile, E., Ciampi, A., Amir, E., & Hidalgo, M. (2020). Unmet needs of family caregivers of hospitalized older adults preparing for discharge home. *Chronic Illness*, 16(2), 131-145.
56. **Merdsoy, L.**, **Lambert, S.**, & **Sherman, J.** (2020). Perceptions, needs and preferences of chronic disease self-management support among men experiencing homelessness in Montreal. *Health Expectations*, 23(6), 1420-1430.
57. Meyer, E. C., **Carnevale, F. A.**, Lillehei, C., & Uveges, M. K. (2020). Widening the ethical lens in critical care settings. *AACN Advanced Critical Care*, 31(2), 210-220.
58. **Michalovic, A.**, Anderson, C., **Thorstad, K.**, Rauch, F., & **Tsimicalis, A.** (2020). Exploring the perceived self-management needs of young adults with osteogenesis imperfecta. *Clinical Nurse Specialist*, 34(3), 99-106.
59. **Montreuil, M.**, Fréchette, J., & **Sofronas, M.** (2020). Bringing people back to the future: The role of hermeneutic temporality in participatory research. *International Journal of Qualitative Methods*, 19, 1609406920945891.
60. **Montreuil, M.**, **Thibeault, C.**, McHarg, L., & **Carnevale, F. A.** (2020). Moral experiences of crisis management in a child mental health setting: A participatory hermeneutic ethnographic study. *Culture, Medicine, and Psychiatry*, 44(1), 80-109.
61. Mutsaers, B., Butow, P., Dinkel, A., Humphris, G., **Maheu, C.**, Ozakinci, G., Prins, J., Sharpe, L., Smith, A. B., Thewes, B., & Lebel, S. (2020). Identifying the key characteristics of clinical fear of cancer recurrence: An international Delphi study. *Psycho-oncology*, 29(2), 430-436.
62. Nguyen, N. H., Kebbe, M., Peng, C., **Van Hulst, A.**, & Ball, G. D. C. (2020). Public health nurse referrals for paediatric weight management: A nested mixed-methods study. *Journal of Clinical Nursing*, 29(17-18), 3263-3271.
63. **Passos Dos Santos, R.**, Macdonald, M. E., & **Carnevale, F.** (2020). A scoping review of the moral experiences of children with medical complexity in Brazil. *Revista Brasileira de Enfermagem*, 73(2), e20190268.
64. Poirier, C., Martel, M. O., **Bérubé, M.**, Boulanger, A., **Gélinas, C.**, Guénette, L., Lacasse, A., Lussier, D., Tousignant-Laflamme, Y., & Pagé, M. G. (2020). French-Canadian translation of a self-report questionnaire to monitor opioid therapy for chronic pain: The Opioid Compliance Checklist (OCC-FC). *Canadian Journal of Pain*, 4(1), 59-66.
65. **Richard-Lalonde, M.**, **Gélinas, C.**, **Boitor, M.**, **Gosselin, E.**, **Feeley, N.**, **Cossette, S.**, & Chlan, L. L. (2020). The effect of music on pain in the adult intensive care unit: A systematic review of randomized controlled trials. *Journal of Pain and Symptom Management*, 59(6), 1304-1319. e6.
66. **Rudy, L.**, **Maheu, C.**, Körner, A., Lebel, S., & **Gélinas, C.** (2020). The FCR-1: Initial validation of a single-item measure of fear of cancer recurrence. *Psycho-Oncology*, 29(4), 788-795.
67. **Shahiri, T. S.**, **Richard-Lalonde, M.**, Richebé, P., & **Gélinas, C.** (2020). Exploration of the nociception level (NOL™) index for pain assessment during endotracheal suctioning in mechanically ventilated patients in the intensive care unit: An observational and feasibility study. *Pain Management Nursing*, 21(5), 428-434.
68. **Siedlikowski, M.**, Rauch, F., & **Tsimicalis, A.** (2020). Giving children with osteogenesis imperfecta a voice: participatory approach for the development of the interactive assessment and communication tool Sisom Ol. *Journal of Medical Internet Research*, 22(9), e17947.
69. Singh, H. K., Macdonald, M. E., & **Carnevale, F. A.** (2020). Considering medical assistance in dying for minors: The complexities of children's voices. *Journal of Medical Ethics*, 46(6), 399.
70. Sneyers, B., Duceppe, M. A., Frenette, A. J., Burry, L. D., Rico, P., Lavoie, A., **Gélinas, C.**, Mehta, S., **Dagenais, M.**, Williamson, D. R., & Perreault, M. M. (2020). Strategies for the prevention and treatment of iatrogenic withdrawal from opioids and benzodiazepines in critically ill neonates, children and adults: A systematic review of clinical studies. *Drugs*, 80(12), 1211-1233.

71. Solomonova, E., MacKinnon, A. L., Gold, I., Robins, S., Wunderlich, S., **Feeley, N.**, Hayton, B., Libman, E., & Zolkowitz, P. (2020). Disordered sleep is related to delusional ideation and depression during the perinatal period. *Sleep Health, 6*(2), 179-184.
72. Tchouaket, E.N., **Kilpatrick, K.**, & Jabbour, M. (2020). Effectiveness for introducing nurse practitioners in six long-term care facilities in Québec, Canada: A cost-savings analysis. *Nursing Outlook, 68*(5), 611-625.
73. Tchouaket, E. N., Beogo, I., Sia, D., **Kilpatrick, K.**, Séguin, C., Baillot, A., Nadar, M., Parisien, N., & Boivin, S. (2020). Protocol for a systematic review of economic analyses of nosocomial infection prevention and control interventions in OECD hospitals. *BMJ Open, 10*(7), e037765.
74. Tchouaket, E.N., Beogo, I., Sia, D., **Kilpatrick, K.**, Séguin, C., Baillot, A., Jabbour, M., Parisien, N., Robins, S., & Boivin, S. (2020). Economic analysis of healthcare-associated infection prevention and control interventions in medical and surgical units: Systematic review using a discounting approach. *Journal of Hospital Infection, 106*(1), 134-154.
75. Tchouaket, E.N., Boivin, S., Robins, S., Sia, D., **Kilpatrick, K.**, Brousseau, S., Dubreuil, B., Larouche, C., & Parisien, N. (2020). Development and validation of a time and motion guide to assess the costs of prevention and control interventions for nosocomial infections: A Delphi method among experts. *PLoS One, 15*(11), e0242212.
76. Thomson, G., Flacking, R., George, K., **Feeley, N.**, Haslund-Thomsen, H., De Coen, K., Schmied, V., Provenzi, L., & Rowe, J. (2020). Parents' experiences of emotional closeness to their infants in the neonatal unit: A meta-ethnography. *Early Human Development, 149*, 105155.
77. **Tsimicalis, A.**, Stevens, B., Ungar, W. J., **Castro, A.**, Greenberg, M., & Barr, R. (2020). Shifting priorities for the survival of my child: Managing expenses, increasing debt, and tapping into available resources to maintain the financial stability of the family. *Cancer Nursing, 43*(2), 147-157.
78. **Van Hulst, A.**, Ybarra, M., Mathieu, M. E., Benedetti, A., Paradis, G., & Henderson, M. (2020). Determinants of new onset cardiometabolic risk among normal weight children. *International Journal of Obesity, 44*(4), 781-789.
79. Wanigaratne, S., Rashid, M., **Gagnon, A.**, Cole, D. C., Shakya, Y., Moineddin, R., Blake, J., Yudin, M. H., Campbell, D., Ray, J. G., & Urquia, M. L. (2020). Refugee mothers, migration pathways and HIV: a population-based cohort study. *AIDS care, 32*(1), 30-36.
80. Weiss, M. J., **Carnevale, F.**, Rochweg, B., Oczkowski, S., & Dhanani, S. (2020). Ensuring nondiscrimination in pandemic prioritization decisions. *Cmaj : Canadian Medical Association Journal = Journal De L'association Medicale Canadienne, 192*(15), 421.
81. Wheeler, K. E., Grilli, R., Centofanti, J. E., Martin, J., **Gelinas, C.**, Szumita, P. M., Devlin, J. W., Chanques, G., Alhazzani, W., Skrobik, Y., Kho, M. E., Nunnally, M. E., Gagarine, A., Ergon, B. A., Fernando, S., Price, C., Lewin, J., & Rochweg, B. (2020). Adjuvant analgesic use in the critically ill: A systematic review and meta-analysis. *Critical Care Explorations, 2*(7), e0157.
82. Wu, Y., Levis, B., Sun, Y., Krishnan, A., He, C., Riehm, K. E., Rice, D. B., Azar, M., Yan, X. W., Neupane, D., Bhandari, P. M., Imran, M., Chiovitti, M. J., Saadat, N., Boruff, J. T., Cuijpers, P., Gilbody, S., McMillan, D., ... **Loiselle, C. G.**, ... Thombs, B. D. (2020). Probability of major depression diagnostic classification based on the SCID, CIDI and MINI diagnostic interviews controlling for Hospital Anxiety and Depression Scale - Depression subscale scores: An individual participant data meta-analysis of 73 primary studies. *Journal of Psychosomatic Research, 129*, 109892.



Photo by Owen Egan



We wish to extend a heartfelt thank you to our *funding sponsors & donors.*

In particular, we would like to acknowledge the generous contributions of the Newton Foundation, the Doggone Foundation, the West Island Palliative Care Residence, the Cohen & Manton Foundation, the Victor Family and the Jewish General Hospital Foundation (CIUSSS Centre-Ouest).



Ingram School of Nursing École des sciences infirmières Ingram



Mission and Value Statements

Our Mission

The mission of the Ingram School of Nursing is to educate current and future nurses, advance the art and science of nursing, and optimize health and health equity globally through academic excellence, strengths-based nursing and innovation.

Our Vision

Creating conditions for health and healing through knowledgeable, compassionate, and strengths-based nursing.



McGill

Ingram School
of Nursing