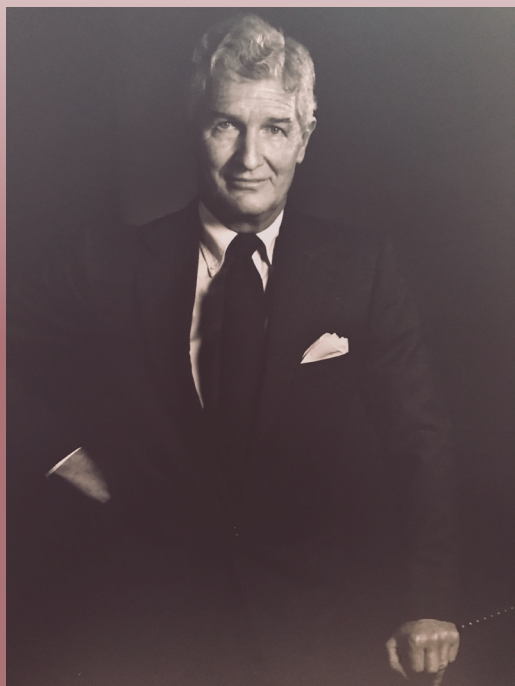


*a memorial in celebration of the life and legacy of*

# Dr. Huntington Sheldon



Wednesday, September 26, 2018  
3:00 p.m.  
Redpath Hall



**McGill**

Faculty of  
Medicine    Faculté de  
médecine



**McGill**



Schulich School of Music  
École de musique Schulich

Wednesday, September 26, 2018 at 3:00 p.m.

Redpath Hall

*a memorial in celebration of the life and legacy of*

# Dr. Huntington Sheldon

**Brenda Ravenscroft**

*Dean, Schulich School of Music*

Livre d'Orgue (excerpt)  
Récit de tierce en taille

John Grew, organ

**NICOLAS DE GRIGNY**  
(1672-1703)

**David Eidelman**

*Vice-Principal (Health Affairs) and Dean of Medicine*

**Professor Richard Cruess**

*Professor Emeritus, Faculty of Medicine*

**John Grew**

*Professor Emeritus, Schulich School of Music*

Quatrième livre de pièces de clavecin (excerpt)  
8. L'Amphibie, mouvement de passacaille

Hank Knox, harpsichord

**FRANÇOIS COUPERIN**  
(1668-1733)

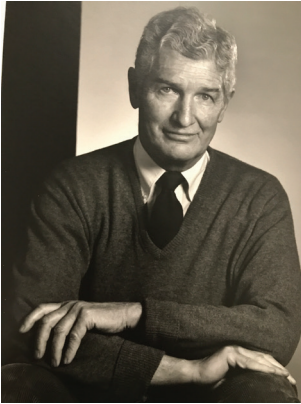
**Heather Munroe-Blum**

*Principal Emerita, McGill University*

Pièces d'Orgue  
Offertoire sur les Grands Jeux

John Grew, organ

**FRANÇOIS COUPERIN**



A native of New York City, **Huntington (Skip) Sheldon**, BA'51, LLD'96, completed his undergraduate studies at McGill as a Markle Scholar, before earning his medical degree at Johns Hopkins University. Dr. Sheldon returned to McGill in 1958 and established a reputation as an outstanding teacher and researcher, serving as Strathcona Professor of Pathology in the Faculty of Medicine. During his tenure at McGill, Dr. Sheldon made a major contribution to the landmark text, *An Introduction to the Study of Disease* (later known as *Boyd's Introduction to the Study of Disease*).

Dr. Sheldon also became a very generous benefactor to the University, providing funds to create the Sheldon Biotechnology Centre, support the Osler Library of the History of Medicine, and help build a permanent infrastructure for the University's Maude Abbott Medical Museum.

McGill's Schulich School of Music was another beneficiary of Dr. Sheldon's generosity. He made an anonymous gift to fund the construction and installation of the University organ in Redpath Hall – a donation which was made public in 1996 when he received an honorary doctorate from McGill. In 1992, Dr. Sheldon made a \$5-million gift that served as the keystone in the campaign for a new music building and served for many years on the Faculty's advisory board.

After a distinguished career, Dr. Sheldon continued to pursue diverse interests as a true Renaissance retiree, raising award-winning purebred Suffolk sheep, competing in open-sea yacht racing, and engaging in his lifelong passion for agriculture and conservation.

