



Dr. Jesse Shapiro: in the news

[Le Devoir: 247 voyageurs à l'origine de l'épidémie au Québec](#)

[Le Journal de Montreal: La faute à la semaine de relâche, disent des chercheurs](#)

MESSAGE FROM YOUR MIMM CHAIRS

Happy Fall everyone!

The leaves are beginning to change, and while our semester is off to a great start, it is clear that the second wave has arrived in Montreal. Red zones, single address gatherings and mobility restrictions are upon us, as case numbers are again rising.

Fortunately for the Department, there is little direct impact on our operations at this stage, and we will continue to deliver our teaching remotely, and conduct our research activates in a safe and secure fashion. This week we received official word from the University that the Winter semester will also be primarily remote. Even if we are allowed to open some in-person activities, it will be necessary to offer remote learning opportunities for

PUBLICATIONS

[Anand, S.P.; Chen, Y.; Prévost, J.; Gasser, R.; Beaudoin-Bussi res, G.; Abrams, C.F.; Pazgier, M.; Finzi, A. Interaction of Human ACE2 to Membrane-Bound SARS-CoV-1 and SARS-CoV-2 S Glycoproteins. *Viruses* 2020, 12, 1104.](#)

[Guak H, Krawczyk CM. Implications of cellular metabolism for immune cell migration. *Immunology*. 2020 Sep 13. doi: 10.1111/imm.13260. Epub ahead of print. PMID: 32920838.](#)

[Monat C, Cousineau B. The circle to lariat ratio of the LI.LtrB group II intron from *Lactococcus lactis* is greatly influenced by a variety of biological determinants in vivo. *PLoS One*. 2020 Aug 18;15\(8\):e0237367. doi: 10.1371/journal.pone.0237367. PMID: 32810148; PMCID: PMC7444581.](#)

[Monat C, Cousineau B. The circle to lariat ratio of the LI.LtrB group II intron from *Lactococcus lactis* is greatly influenced by a variety of](#)

students who cannot come to Montreal.

We recognize this shift will entail more hard work and sacrifice on everyone's part, but we have already started planning, taking our experiences from this Fall into consideration. We would love to hear any suggestions you have on how to deliver the best possible educational experience in the winter semester, and what resources might help in this effort.

Stay safe everyone!

Don and Sam



AMR Awareness Video Competition

In honor of World Antimicrobial Awareness Week (November 18-24 2020), the AMR Centre at McGill and MIMM are inviting McGill undergraduate students to create a short video highlighting the causes and threat of AMR, and the actions citizens can take to tackle this problem. The video should inform and sensitize citizens about the dangers of AMR and inspire them to help curb this global threat. Get creative and win prizes.

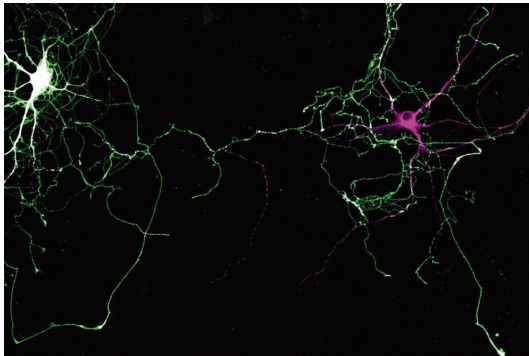
[biological determinants in vivo. PLoS One. 2020 Aug 18;15\(8\):e0237367. doi: 10.1371/journal.pone.0237367. eCollection 2020.PMID: 32810148](#)

[Piccirillo CA. Transcriptional and translational control of Foxp3+ regulatory T cell functional adaptation to inflammation. Curr Opin Immunol. 2020 Aug 17;67:27-35. doi: 10.1016/j.coi.2020.07.006. Epub ahead of print. PMID: 32818885.](#)
[Salmanton-García J, Koehler P, Kindo A, Falces-Romero I, García-Rodríguez J, Ráčil Z, Chen SC, Klimko N, Desoubreaux G, Thompson GR, III, Benítez-Peñuela MÁ, Rodríguez JY, Sheppard DC, Hoenigl M, Le Govic Y, Badali H, Baddley JW, Chander J, Ingram PR, Pakstis DL, Mellinghoff SC, Atıcı S, Cesaro S, Chakrabarti A, Dupont D, González GM, Hatvani L, Herbrecht R, Klyasova G, Lass-Flörl C, Mares M, Mullane K, Vinh DC, Wisplinghöff H, Lackner M, Cornely OA, Seidel D; ECMM/ISHAM working group. Needles in a haystack: Extremely rare invasive fungal infections reported in FungiScope[®]-Global Registry for Emerging Fungal Infections. J Infect. 2020 Aug 13:S0163-4453\(20\)30549-1. doi: 10.1016/j.jinf.2020.08.015. Epub ahead of print. PMID: 32798532.](#)

[Shapiro, J., Murall, C. L., Fournier, E., Galvez, J. H., Reiling, S., Quirion, P., . . . Moreira, S. \(2020, September 18\). Genomic epidemiology of early introductions of SARS-CoV-2 into the Canadian province of Québec. Retrieved from https://virological.org/t/genomic-epidemiology-of-early-introductions-of-sars-cov-2-into-the-canadian-province-of-quebec/553](#)

[Simond AM, Ling C, Moore MJ, Condotta SA, Richer MJ, Muller WJ. Point-activated ESR1^{Y541S} has a dramatic effect on the development of sexually dimorphic organs. Genes Dev. 2020 Sep 10. doi: 10.1101/gad.339424.120. Epub ahead of print. PMID: 32912899.https://pubmed.ncbi.nlm.nih.gov/32912899/](#)

Deadline to submit a video:
November 4 2020.
[Register now!](#)
[More info.](#)



\$12.5 million awarded to Montreal team to study Parkinson's Disease

A group of scientists at University of Montreal, The Neuro (Montreal Neurological Institute-Hospital), and McGill University has been awarded a major research grant of over \$12.5 million from the Aligning Science Across Parkinson's (ASAP) initiative over the next three years to study Parkinson's disease. Congratulations to **Dr. Samantha Gruenheid** and her team.

[Read more](#)

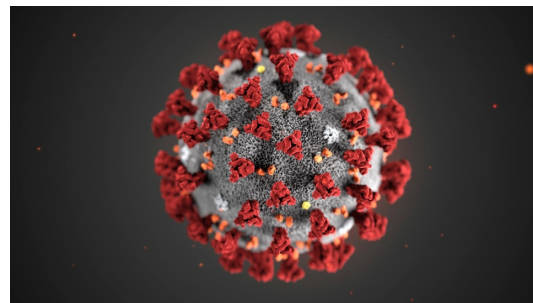
JLB JOURNAL OF
LEUKOCYTE
BIOLOGY

Dr. Stevenson: the new Senior Associate Editor at JLB

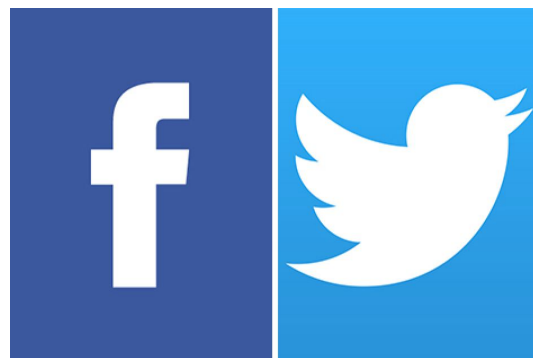
Dr. Mary Stevenson has been invited to serve as a Senior Associate Editor for the [Journal of Leukocyte Biology](#). In this capacity, she will be a Section

[Srikanta SB, Cermakian N. To Ub or not to Ub: Regulation of circadian clocks by ubiquitination and deubiquitination. J. Neurochem. 2020;00:1–20. <https://doi.org/10.1111/jnc.15132> \(Early view online version\)](#)

[Xu G, van Bruggen R, Gualtieri CO, Moradin N, Fois A, Vallerand D, De Sa Tavares Russo M, Bassenden A, Lu W, Tam M, Lesage S, Girouard H, Avizonis DZ, Deblois G, Prchal JT, Stevenson M, Berghuis A, Muir T, Rabinowitz J, Vidal SM, Fodil N, Gros P. Bisphosphoglycerate Mutase Deficiency Protects against Cerebral Malaria and Severe Malaria-Induced Anemia. Cell Rep. 2020 Sep 22;32\(12\):108170. doi: 10.1016/j.celrep.2020.108170. PMID: 32966787.](#)



Stay updated on the latest COVID-19 news by visiting the [McGill COVID-19 page](#).



[Connect with us!](#)

Like our official [Facebook](#) page and follow us on [Twitter](#)

Editor and serve on the Senior
Leadership Council for the journal.

Dr. Stevenson encourages
Departmental Members to consider
submitting manuscripts to the journal
as well as PDFs and graduate
students to join the [Society for
Leukocyte Biology](#). SLB provides
[travel awards](#) as well as presentation
awards to trainees for their annual
meetings.



Want to contribute an item to the MIMM Bites? Send it [here](#).

Visit the MIMM [website](#) for the latest updates.

[View previous editions of MIMM Bites Newsletters](#)

This email was sent to <<Email Address>>

[why did I get this?](#) [unsubscribe from this list](#) [update subscription preferences](#)

Department of Microbiology and Immunology - McGill University · 3775 University Street · Montreal, QC H3A 2B4 · Canada

