

Why I'm in Grad Studies and What's Happening There

January 31, 2008
Management Forum

**Martin Kreiswirth, Associate Provost
(Graduate Education)
Dean, Graduate & Postdoctoral Studies**

How did I get here

- **Interdisciplinary Research- academic interests and inquiry>**
- **Centre for the Study of Theory and Criticism, University of Western Ontario (1986-1995)**
- **Associate Dean, Faculty of Graduate Studies, UWO (1995-2002)**
- **Dean, Faculty of Graduate Studies, UWO (2002-2007)**
- **Associate Provost, Graduate Education, Dean, Graduate and Postdoctoral Studies, McGill (2007 -)**

Role/Duties of Associate Provost (Graduate Education), Dean of Graduate and Postdoctoral Studies

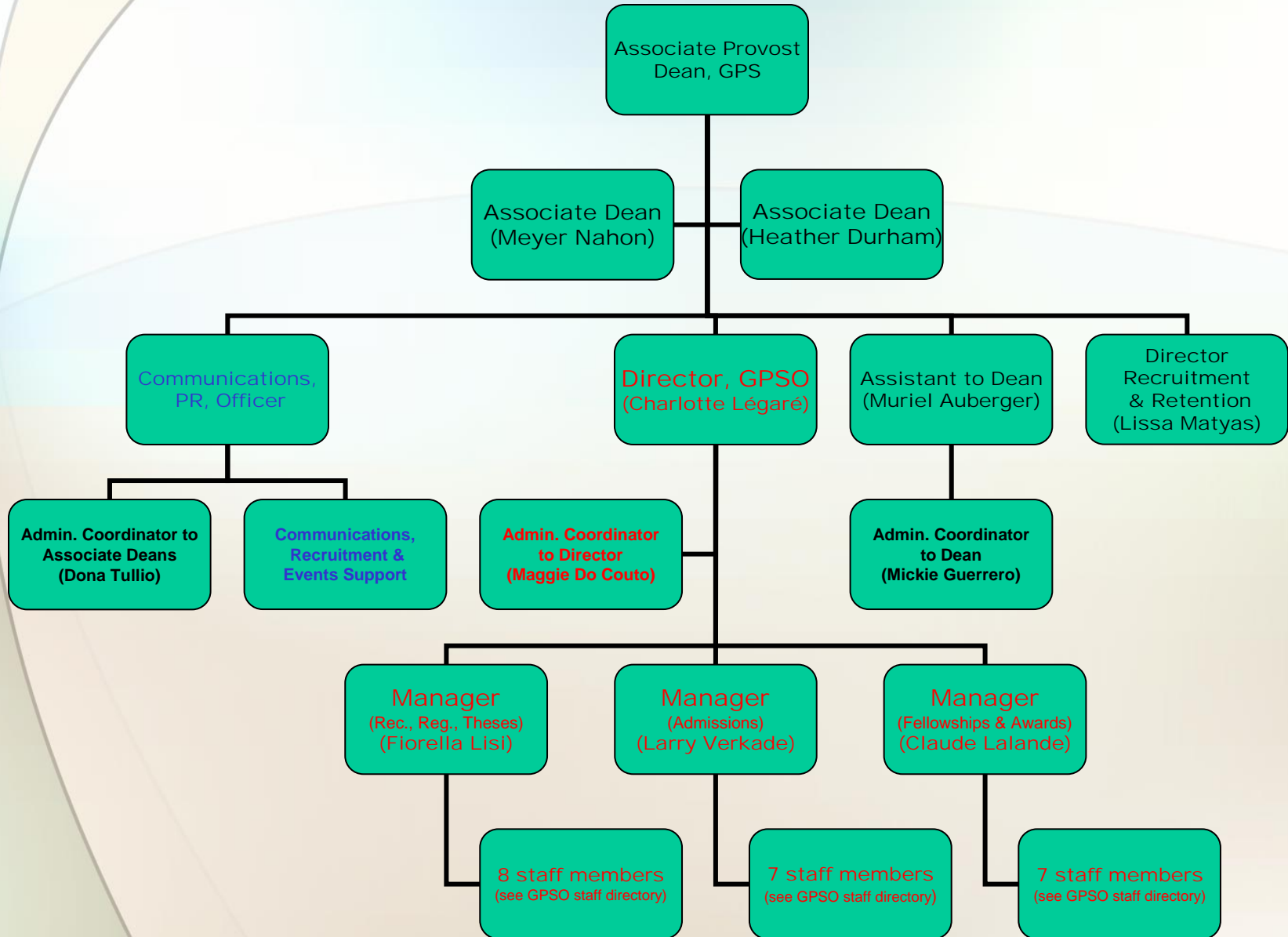
- **Graduate education**
 - advancing and promoting a strategy for strengthening the quality of graduate and postdoctoral education across the university
- **Graduate programs**
 - facilitating the development and enhancement of graduate programs and the resources necessary for achieving these goals
- **Graduate students**
 - improving the overall academic and non-academic graduate student and postdoctoral experience
- **Collaboration with Faculties and all stakeholders involved in graduate and postdoctoral studies to achieve goals**
- **Oversee GPS and graduate and postdoctoral activities at McGill**
- **Act as an advocate for Graduate and Postdoctoral Studies, both intra- and extra-murally**
- **Develop policies, strategies, and processes to position McGill among the top graduate and postdoctoral institutions internationally**

Administration of Graduate & Postdoctoral Studies at McGill

- **Responsibility for graduate programs is shared by the Deans of the Faculties and the Dean of Graduate and Postdoctoral Studies**
- **Many of the details of the daily administration of graduate studies takes place in the department**
- **Graduate and Postdoctoral Studies (GPS) is responsible for the central administration of graduate studies, including admissions, registration, fellowships, theses, graduation, some funding, and overall quality assurance**

GRADUATE AND POSTDOCTORAL STUDIES Organizational Overview

Black = Dean's Office, James Building, 3rd floor, room 325
 Red = Graduate and Postdoctoral Studies Office, James Building, 4th floor, room 400



Role/Duties of Associate Deans of Graduate and Postdoctoral Studies

- **Disciplinary Officers for graduate students and postdocs**
- **Help departments with serious difficulty and problematic supervisory situations**
- **Program development**
- **Work with Associate Provost, Faculty Associate Deans, and GPDs, in planning and policy development**
- **Oversight:**
 - **Fellowships and Awards**
 - **Appeals**

**Total graduate students 2006-7: 7,375
(including graduate degree, certificate & diploma students)**

Men: 3,517

Women: 3,858

Quebec: 4,613

Other Canada: 1,357

International: 1,405

Master's: 3,466

Doctoral: 2,597

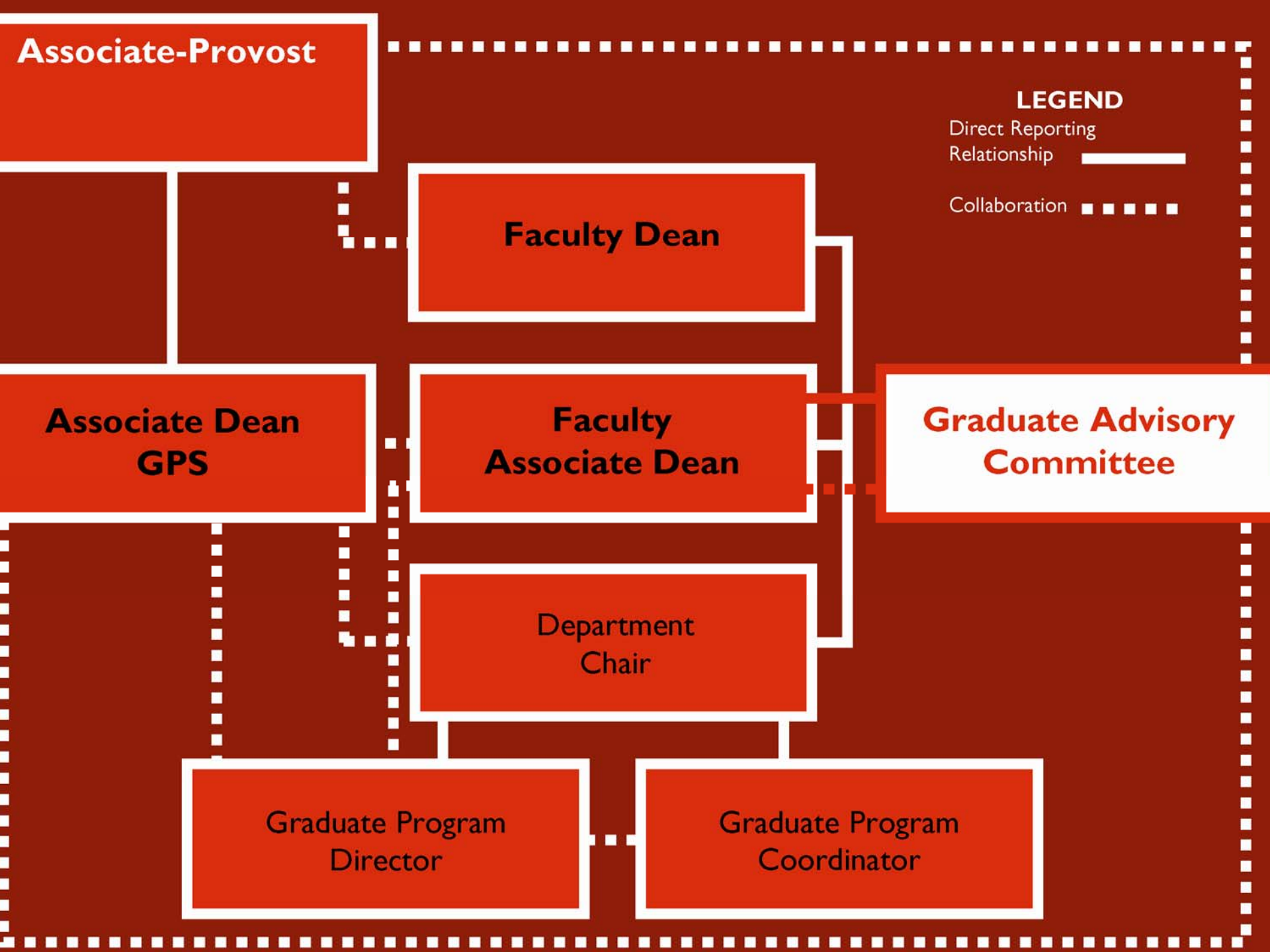
NB: These data report the university of origin of the student

Formal Interaction of GPS with University

- **Either Dean or Assoc. Dean a member of**
 - **Research Policy Committee**
 - **Subcommittee on Courses and Teaching Programs**
 - **Academic Policy Committee**
 - **University Committee on Scholarships and Student Aid**
 - **University Admission Committee**
 - **Committee on Student Affairs**

Graduate Studies and Postdoc Communication

- Announcements, regulations, etc. on the website:
www.mcgill.ca/gps/
(in the process of being made more user-friendly)
- Graduate studies messages are sent from GPS through the **GRADPROG** Listserv to all departments. Departments convey the messages to all professors and graduate students
- Postdoc messages are sent to postdocs and supervisors on the **POSTDOC** Listserv
- The Dean and Associate Deans of GPS meet with GPDs biannually
- Council of Graduate and Postdoctoral Studies (36 members), Senate Committee
- **New:** The Graduate Studies Advisory Committee, which is made up of an Associate Dean from each Faculty, is an important venue for sharing information on graduate studies. The Associate Dean is a conduit between GPS and the Faculty Dean, Department Chairs and Graduate Program Directors. Information thus passes back and forth between the Associate Dean, GPS, and all Faculty stakeholders.



Graduate Education

- **Special, important, and unprecedented time in graduate education:**
 - **international need for Highly Qualified Personnel (HQP) in a “Knowledge Economy”**

New McGill Graduate Environment

- **As stated in our planning documents, a top priority for McGill is a pan-university emphasis on graduate student recruitment, retention, and high-quality enrolment growth**
- **Ongoing improvements in funding, graduate student experience, supervision, program development, times to completion, etc. will be promoted to re-brand graduate education in McGill**
- **Reformulate GPS funding model**
 - **goals:**
 - **Coordinated, dependable, multi-year funding packages**
- **Plan to introduce new Doctoral travel awards**

New McGill Graduate Environment (2)

- **Enhance student experience**
 - **Clear expectations of regulations and program requirements**
 - **Emphasis on outcomes**
 - **Assuring adequate space**
 - **Alumni community and outcomes**
 - **Professional Skill Development – both academic and non-academic**
 - **Pedagogical Training**
 - **Aid in language and writing skills**
 - **Extended Career Development**
 - **Cultural and Academic Orientation**
 - **Coordination of Grad student services**
 - **Aid in supporting family life**
 - **New program development & interdisciplinarity**

New McGill Graduate Environment (3)

- **Initiatives for publicity and accuracy of information**
 - **Facilitate and provide resources for website development**
 - **Global and Department/Program**
 - **Consistent pan-university information**
 - **Templates for truth in advertising**
- **Initiatives to aid times to completion and reduce attrition**
 - **program development**
 - **Milestones**
 - **Enhance supervision – data and workshops**