

## Mercury Report on Response Rate Academic Year 2008-2009



### EXECUTIVE SUMMARY

	2008-2009	
	Fall 08	Winter 09
<b>COURSE DATA</b>		
Courses evaluated	1, 928	2,007
Overall average response rate	45%	42%
<b>INSTRUCTOR DATA</b>		
Instructors evaluated		~1,400
Granted permission		66%
<b>STUDENT DATA</b>		
Students involved	26, 161	27,167
Students who had more than one evaluation	82%	84%
Students who completed at least one evaluation	59%	51%
Students who completed none assigned	50%	49%
<b>DEPARTMENT DATA</b>		
Departments/Units involved	81	84
Departments with > 70% average response rate	5	5
Departments with 50% - 69% average response rate	23	21
Departments with 41% - 49% average response rate	29	26
Departments with < 40% average response rate	24	32

### 1A. AVERAGE RESPONSE RATE BASED ON CLASS SIZE FOR FALL 2008

(primary course evaluation only, excluding courses with enrolment of less than five)

- 1, 928 courses evaluated
- 59% <sup>(1143/1928)</sup> of courses evaluated met dissemination threshold which is minimum of five responses and a sliding response rate based on class size.
- 15% <sup>(331)</sup> of courses evaluated had an enrolment of one to four students and are therefore not eligible for dissemination to the McGill community.

Fall 2008					
Class size	2008 Policy threshold	Avg. response rate	# of courses evaluated	# of courses achieved threshold	# of courses below threshold
1 - 4	N/A	37%	331	N/A	N/A
5 - 11	min 5	48%	423	148	275
12 - 30	40%	46%	704	420	284
31 - 100	35%	42%	603	406	197
101 - 200	30%	40%	143	117	26
201+	25%	37%	55	52	3
			<b>1,928</b>	<b>1,143</b>	<b>785</b>

### 1B. AVERAGE RESPONSE RATE BASED ON CLASS SIZE FOR WINTER 2009

(primary course evaluation only, excluding courses with enrolment of less than five)

- 2,007 courses evaluated
- 52% <sup>(1051/2007)</sup> of courses evaluated met dissemination threshold which is minimum of five responses and a sliding response rate based on class size.
- 15% <sup>(368)</sup> of courses evaluated had an enrolment of one to four students and are therefore not eligible for dissemination to the McGill community.

Winter 2009					
Class size	2008 Policy threshold	Avg. response rate	# of courses evaluated	# of courses achieved threshold	# of courses below threshold
1 - 4	N/A	35%	368	N/A	N/A
5 - 11	min 5	46%	476	153	323
12 - 30	40%	44%	777	441	336
31 - 100	35%	39%	579	325	254
101 - 200	30%	36%	128	91	37
201+	25%	30%	47	41	6
			<b>2,007</b>	<b>1,051</b>	<b>956</b>

## 2. AVERAGE RESPONSE RATE BASED ON RANK TITLE FOR ACADEMIC YEAR 2008-2009

Note: Rank titles in bold are tenure track faculty and in italics are non-tenure track faculty.

Fall 2008		
Rank Title	# of courses evaluated	Avg. response rate
<i>Course Lecturer</i>	153	47%
<i>Faculty Lecturer</i>	116	47%
<i>Adjunct Professor</i>	33	38%
<b>Assistant Professor</b>	<b>205</b>	<b>51%</b>
<i>Assistant Professor-NTT</i>	17	31%
<b>Assistant Professor-Spec Category</b>	<b>10</b>	<b>52%</b>
<b>Associate Professor</b>	<b>291</b>	<b>46%</b>
<i>Associate ProfessorNTT</i>	12	33%
<b>Professor</b>	<b>273</b>	<b>46%</b>
<b>Dean/Director</b>	<b>2</b>	<b>18%</b>

Winter 2009		
Rank Title	# of courses evaluated	Avg. response rate
<i>Course Lecturer</i>	97	48%
<i>Faculty Lecturer</i>	173	45%
<i>Adjunct Professor</i>	17	29%
<b>Assistant Professor</b>	<b>108</b>	<b>49%</b>
<i>Assistant Professor-NTT</i>	15	37%
<b>Assistant Professor-Spec Category</b>	<b>5</b>	<b>40%</b>
<b>Associate Professor</b>	<b>183</b>	<b>42%</b>
<i>Associate ProfessorNTT</i>	1	25%
<b>Professor</b>	<b>129</b>	<b>43%</b>

## 3. INSTRUCTORS WHO GRANTED/DENIED PERMISSION FOR DISSEMINATION AS OF WINTER 2009

Instructors evaluated online (unique)	4,006	
Accessed permission form	1,113	---
Granted permission	737	66% (737/1113)
Denied permission	233	21% (737/1113)
Didn't answer, not eligible (left blank)	143	13% (737/1113)

#### 4A. STUDENTS WITH THE NUMBER OF ASSIGNED AND COMPLETED EVALUATIONS FOR FALL 2008

- 82% <sup>(21, 457)</sup> of students had MORE THAN ONE evaluation assigned for completion.
- 26% of students had 4 OR 5 evaluations assigned for completion.
- 59% <sup>(15, 422)</sup> of students completed AT LEAST ONE evaluation from total assigned.
- 35% <sup>(9, 283)</sup> of students completed ALL of their assigned evaluations.
- 50% <sup>(13, 166)</sup> of students completed NONE of their assigned evaluations.

<b>FALL 2008</b>		
<b># of evaluations assigned to a student</b>	<b># of students supposed to complete eval(s)</b>	<b># of students who completed <u>ALL</u> assigned eval(s)</b>
1 evaluation	4,704	2,239
2 evaluations	2, 426	1,021
3 evaluations	2,934	979
4 evaluations	6,706	2,036
5 evaluations	7,153	2,082
6 evaluations	2,205	501
7 evaluations	756	177
8 evaluations	784	129
9 evaluations	695	87
10 evaluations	161	25
11 evaluations	51	6
12 evaluations	11	1
15 evaluations	1	0
	<b>26, 161</b>	<b>9, 283</b>

#### 4B. STUDENTS WITH THE NUMBER OF ASSIGNED AND COMPLETED EVALUATIONS FOR WINTER 2009

- 84% of students had MORE THAN ONE evaluation assigned for completion.
- 23% of students had 4 OR 5 evaluations assigned for completion.
- 51% of students completed AT LEAST ONE evaluation from total assigned.
- 31% of students completed ALL of their assigned evaluations.
- 49% of students completed NONE of their assigned evaluations.

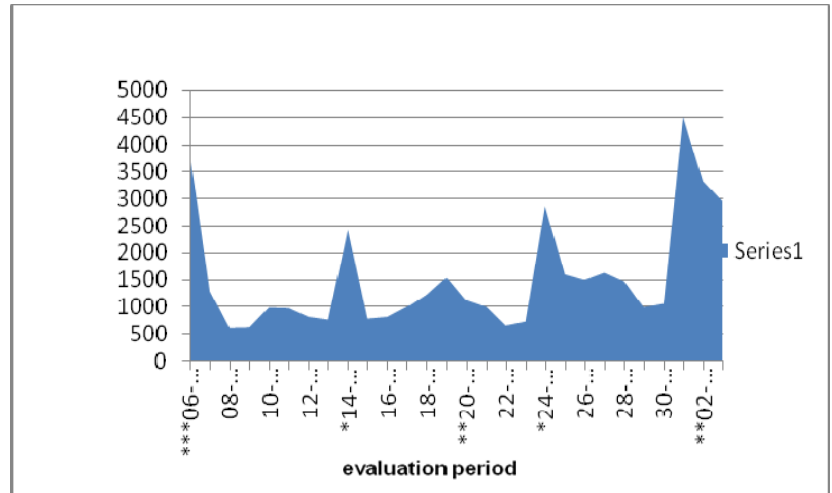
<b>Winter 2009</b>		
<b># of evaluations assigned to a student</b>	<b># of students supposed to complete eval(s)</b>	<b># of students who completed <u>ALL</u> assigned eval(s)</b>
1 evaluation	4,308	2,203
2 evaluations	2,724	1,057
3 evaluations	2,344	751
4 evaluations	5,796	1,669
5 evaluations	6,862	1,763
6 evaluations	2,123	446
7 evaluations	890	176
8 evaluations	848	150
9 evaluations	853	111
10 evaluations	309	31
11 evaluations	73	16
12 evaluations	23	2
13 evaluations	12	1
14 evaluations	1	0
15 evaluations	1	0
	<b>27, 167</b>	<b>8, 376</b>

## 5A. DAILY SUBMISSION CHART FOR FALL 2008

Note: Responses submitted during the main evaluation period <sup>\*1</sup>

	Date	# of Submissions
Day 1	<b>***06-NOV-08</b>	<b>3818</b>
Day 2	07-NOV-08	1293
Day 3	08-NOV-08	627
Day 4	09-NOV-08	637
Day 5	10-NOV-08	995
Day 6	11-NOV-08	983
Day 7	12-NOV-08	824
Day 8	<b>**13-NOV-08</b>	<b>774</b>
Day 9	<b>*14-NOV-08</b>	<b>2425</b>
Day 10	15-NOV-08	792
Day 11	16-NOV-08	825
Day 12	17-NOV-08	1008
Day 13	18-NOV-08	1237
Day 14	19-NOV-08	1546
Day 15	<b>**20-NOV-08</b>	<b>1130</b>
Day 16	21-NOV-08	1010
Day 17	22-NOV-08	668
Day 18	23-NOV-08	738
Day 19	<b>*24-NOV-08</b>	<b>2863</b>
Day 20	25-NOV-08	1608
Day 21	26-NOV-08	1507
Day 22	<b>**27-NOV-08</b>	<b>1638</b>
Day 23	28-NOV-08	1480
Day 24	29-NOV-08	1002
Day 25	30-NOV-08	1064
Day 26	<b>*01-DEC-08</b>	<b>4508</b>
Day 27	<b>**02-DEC-08</b>	<b>3331</b>
Day 28	03-DEC-08	2964
		<b>43, 295</b>

Daily Submission Chart for Fall 2008



**\*system email reminders**

**\*\*myCourses reminders**

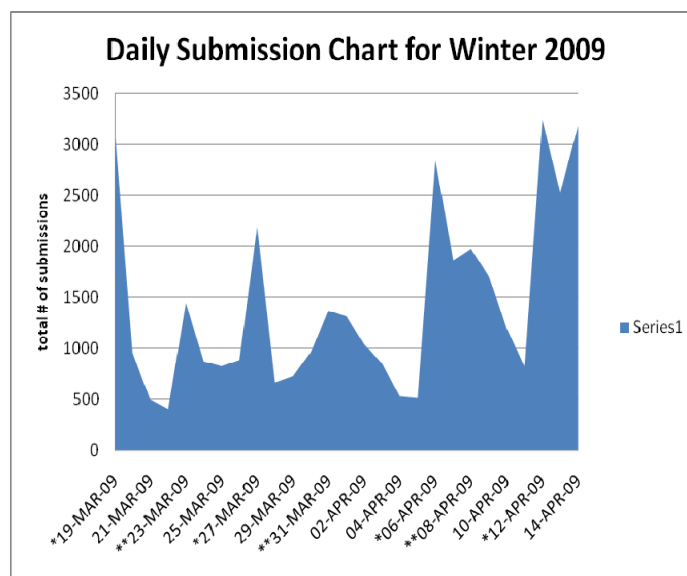
**\*\*\*both reminders**

<sup>\*1</sup> The main course evaluation period is same across the University and applies to courses that follow the regular term calendar.

## 5B. DAILY SUBMISSION CHART FOR WINTER 2009

Note: Responses submitted during the main evaluation period\*<sup>1</sup>

	Date	# of Submissions
<b>DAY 1</b>	<b>*19-MAR-09</b>	<b>3163</b>
DAY 2	20-MAR-09	960
DAY 3	21-MAR-09	500
DAY 4	22-MAR-09	409
<b>DAY 5</b>	<b>**23-MAR-09</b>	<b>1448</b>
DAY 6	24-MAR-09	876
DAY 7	25-MAR-09	829
DAY 8	26-MAR-09	890
<b>DAY 9</b>	<b>*27-MAR-09</b>	<b>2196</b>
DAY 10	28-MAR-09	670
DAY 11	29-MAR-09	731
DAY 12	30-MAR-09	964
<b>DAY 13</b>	<b>**31-MAR-09</b>	<b>1374</b>
DAY 14	01-APR-09	1317
DAY 15	02-APR-09	1045
DAY 16	03-APR-09	855
DAY 17	04-APR-09	534
DAY 18	05-APR-09	518
<b>DAY 19</b>	<b>*06-APR-09</b>	<b>2848</b>
DAY 20	07-APR-09	1869
<b>DAY 21</b>	<b>**08-APR-09</b>	<b>1978</b>
DAY 22	09-APR-09	1710
DAY 23	10-APR-09	1199
DAY 24	11-APR-09	828
<b>DAY 25</b>	<b>*12-APR-09</b>	<b>3246</b>
<b>DAY 26</b>	<b>**13-APR-09</b>	<b>2530</b>
DAY 27	14-APR-09	3189
		<b>38676</b>



\*system email reminders

\*\*myCourses reminders

\*<sup>1</sup> The main course evaluation period is same across the University and applies to courses that follow the regular term calendar.

## 6. AVERAGE RESPONSE RATE BY FACULTY FOR ACADEMIC YEAR 2008-2009

(primary course evaluation only, excluding courses with enrolment less than five)

Faculty	Fall 2008		Winter 2009	
	# of courses evaluated	Avg. response rate	# of courses evaluated	Avg. response rate
Agricultural & Environmental Sciences	170	44%	155	38%
Arts	483	47%	561	44%
Dentistry	4	36%	15	26%
Education	187	52%	167	45%
Engineering	223	42%	241	39%
Law	87	36%	80	38%
Desautels Faculty of Management	134	47%	131	46%
Medicine	134	46%	168	47%
Schulich School of Music	136	28%	102	26%
Religious Studies	34	40%	35	42%
Science	278	47%	293	44%
<b>Faculty Response Rates</b>	<b>1,870</b>	<b>44%</b>	<b>1,948</b>	<b>42%</b>
Centre for Continuing Education	179	51%	190	53%
<b>University-Wide Response Rates</b>	<b>2,049</b>	<b>43%</b>	<b>2,138</b>	<b>45%</b>

## 7. AVERAGE RESPONSE RATE BY DEPARTMENT FOR ACADEMIC YEAR 08-09

(primary course evaluation only, excluding courses with enrolment less than five)

Department	Fall 2008		Winter 2009	
	# of courses evaluated	Avg. response rate	# of courses evaluated	Avg. response rate
<b>Agri and Env. Sciences (10)</b>				
Agricultural Economics	5	56%	3	37%
Animal Science	7	52%	14	38%
Bioresource Engineering	36	26%	25	30%
Dietetics & Human Nutrition	25	44%	21	32%
Farm Mgmt & Technology Program	26	48%	23	19%
Food Science & Agr-Chemistry	14	46%	9	36%
Natural Resource Sciences	21	49%	26	46%
Parasitology	7	65%	11	43%
Plant Science	17	47%	13	60%



McGill School of Environment	12	55%	10	65%
<b>Arts (21)</b>				
Anthropology	20	49%	23	40%
Art History & Communication St	21	39%	13	38%
Arts - Dean's Office	31	34%	26	33%
East Asian Studies	9	38%	28	36%
Economics	45	48%	40	40%
English	56	53%	61	47%
English & French Language Centre	30	48%	53	46%
French Language & Literature	23	68%	28	60%
German Studies	11	43%	17	52%
Hispanic Studies	10	65%	26	55%
History	51	39%	52	36%
Institute for Study of Canada	10	36%	8	30%
Islamic Studies	6	57%	19	51%
Italian Studies	11	65%	22	55%
Jewish Studies	9	32%	12	25%
Linguistics	15	57%	12	53%
Philosophy	24	38%	25	38%
Political Science	43	50%	38	46%
Russian & Slavic Studies	13	49%	12	29%
Social Work	20	52%	20	51%
Sociology	25	36%	26	44%
<b>Continuing Education (5)</b>				
Career And Management Studies	40	34%	44	39%
English Lang Programs	97	74%	91	79%
French Lang Programs	38	76%	27	75%
Translation Studies	28	48%	24	45%
General Studies	5	17%	4	28%
<b>Dentistry (1)</b>	4	36%	15	26%
<b>Education (4)</b>				
Educational & Counselling Psych	43	58%	36	49%
Information Studies	12	78%	15	59%
Integrated Studies in Ed	109	50%	88	45%
Kinesiology and Physical Ed	23	37%	25	34%
<b>Engineering (8)</b>				
Architecture	42	32%	43	29%

Chemical Engineering	20	48%	16	31%
Civil Engineering	25	47%	57	58%
Electrical & Computer Eng	59	38%	75	32%
Engineering - Dean's Office	1	52%	1	86%
Mechanical Engineering	40	46%	43	48%
Mining, Metals & Materials Eng	28	45%	26	34%
Urban Planning	8	41%	10	60%
<b>Law (3)</b>				
Air & Space Law	5	46%	2	78%
Comparative Law	2	64%	9	51%
Law	80	34%	69	35%
<b>Management (1)</b>	134	47%	131	46%
<b>Medicine (17)</b>				
Anatomy and Cell Biology	6	38%	6	42%
Biochemistry	4	29%	12	28%
Biomedical Engineering	5	64%	5	47%
Comm Sciences & Disorders	11	56%	11	67%
Epidemiology And Biostatistics	10	69%	13	64%
Human Genetics	2	64%	1	80%
Medicine	13	42%	13	33%
Microbiology & Immunology	9	37%	9	43%
Neurology & Neurosurgery	2	73%	5	50%
Nursing	26	47%	29	47%
Occupational Health	5	25%	8	39%
Pathology	N/A	N/A	1	32%
Pharmacology And Therapeutics	5	39%	8	49%
Physical & Occupational Therapy	23	47%	23	55%
Physiology	10	29%	17	36%
Psychiatry	3	51	6	63%
Social Studies of Medicine	N/A	N/A	1	31%
<b>Music (2)</b>				
Music Research	85	31%	56	42%
Performance	51	23%	46	19%
<b>Religious Studies (1)</b>	34	40%	35	42%
<b>Science (10)</b>				
Atmospheric & Oceanic Sciences	7	40%	9	54%
Biology	30	47%	26	41%

Chemistry	44	46%	63	42%
Computer Science	35	48%	30	42%
Earth & Planetary Sciences	16	50%	16	43%
Geography	19	64%	24	57%
Mathematics and Statistics	56	44%	55	38%
Physics	30	46%	31	48%
Psychology	39	43%	36	37%
Redpath Museum	2	85%	3	50%

**8. AVERAGE RESPONSE RATE BASED ON THE TYPE OF COURSE FOR ACADEMIC YEAR 2008-2009**  
(primary course evaluation only, excluding courses with enrolment less than five)

Type of course	Fall 2008		Winter 2009	
	# of evaluations	Avg. response rate	# of evaluations	Avg. response rate
Laboratory	36	36%	84	31%
Lecture	1,539	46%	1,592	43%
Seminar	197	48%	215	45%
Studio	57	25%	46	28%
Tutorial	30	21%	3	34%