



Update on the Glen site

Dr. Ewa Sidorowicz and Imma Franco
November 18, 2013

Transformation • Innovation • Excellence
sur trois sites | on three sites

Centre universitaire
de santé McGill



McGill University
Health Centre



The Glen site, 2010



Glen site, September 2013



Clinical Plan Context

2004 –
2007

- Eight working groups mandated in 2004 to recommend organization of services on two sites.
- The MSSS requires CHU hospitals to focus services on specialized and supra-specialized care while limiting basic services to local population; required to meet teaching mandate.

2008

- Lachine Hospital becomes part of the MUHC. The clinical plan is adjusted.

2013

- Baron Report
- The MUHC collaborates with RUIS and network partners to optimize patient experience.

Clinical Plan – Glen Planning Assumptions

Inpatient units

- A decrease in the total volume of cases, in line with the transfer of primary and secondary care to the network.
- An overall increase in level of access 2 and 3 as a proportion of cases
- No long-term care beds are planned.
- Bed occupancy rate is projected at 85%.
- 100% single patient rooms

Clinical Plan – Glen Planning

Assumptions

Ambulatory

- Overall clinic volumes reduced; MUHC to focus on complex care and transfer a portion of primary and secondary care to the CSSS. Return to the 450 region **70%** of clientele receiving level I services at the MUHC and **50%** of clientele receiving level II services.
- In the 514 area, transfer percentage of level I and II clientele to the CSSS and other regional hospitals.
- Optimize use of examination room space to be achieved through a review of procedures and possible extension of operating hours.

OR

- 8hrs/day; 247 days/year
- Centralized scheduling
- Average length of case 2hrs level I & II, 4 hrs level III (as per MSSS analysis)

Origin – Destination Programs & Services



New MUHC Services

(Partial list only)

Glen

General medicine/surgery
Emergency
Cancer Care
Palliative Care
Montreal Children's
Women's Health
Cardiovascular Program
Transplantation
Urology
Respiratory Medicine
Plastic Surgery
Otorhinolaryngology
Intensive Care
Coronary Care

MGH

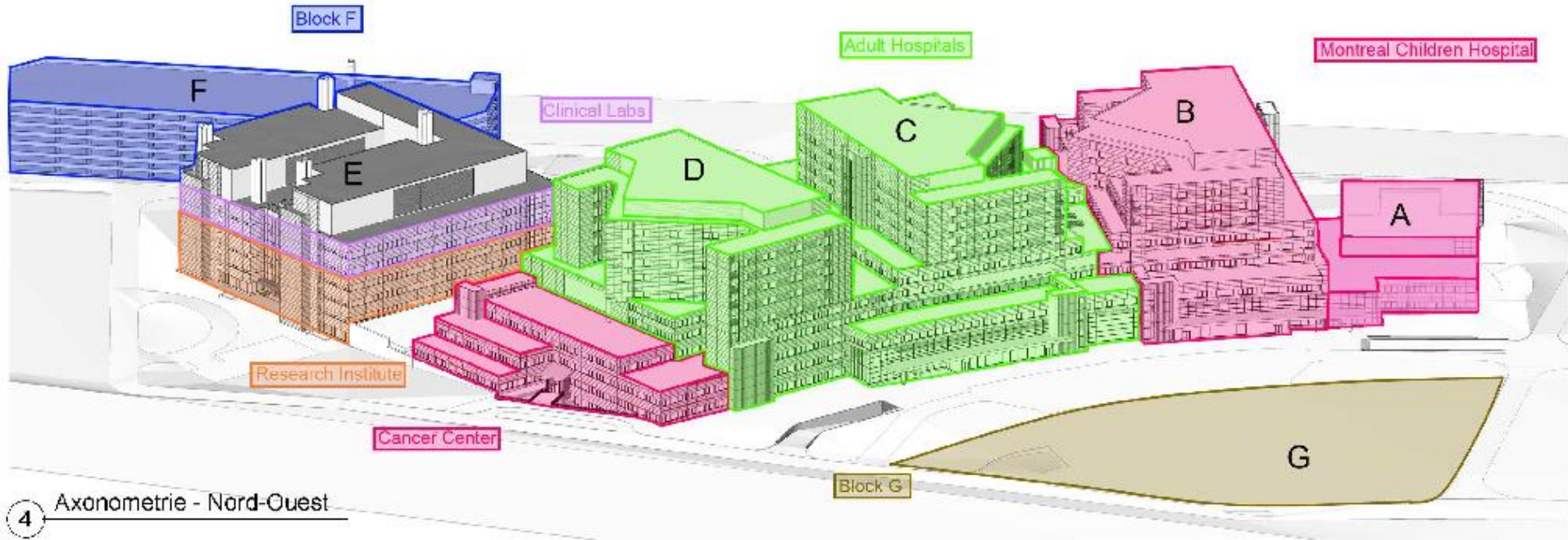
General (medicine/surgery)
MIS
Emergency
Trauma
Neurology
Orthopedics
Oral & maxillofacial Surgery
Plastic Surgery
Mental Health
Ophthalmology
Geriatric Medicine
Intensive Care
Coronary Care
Thoracic Surgery
Bariatric Surgery

Lachine

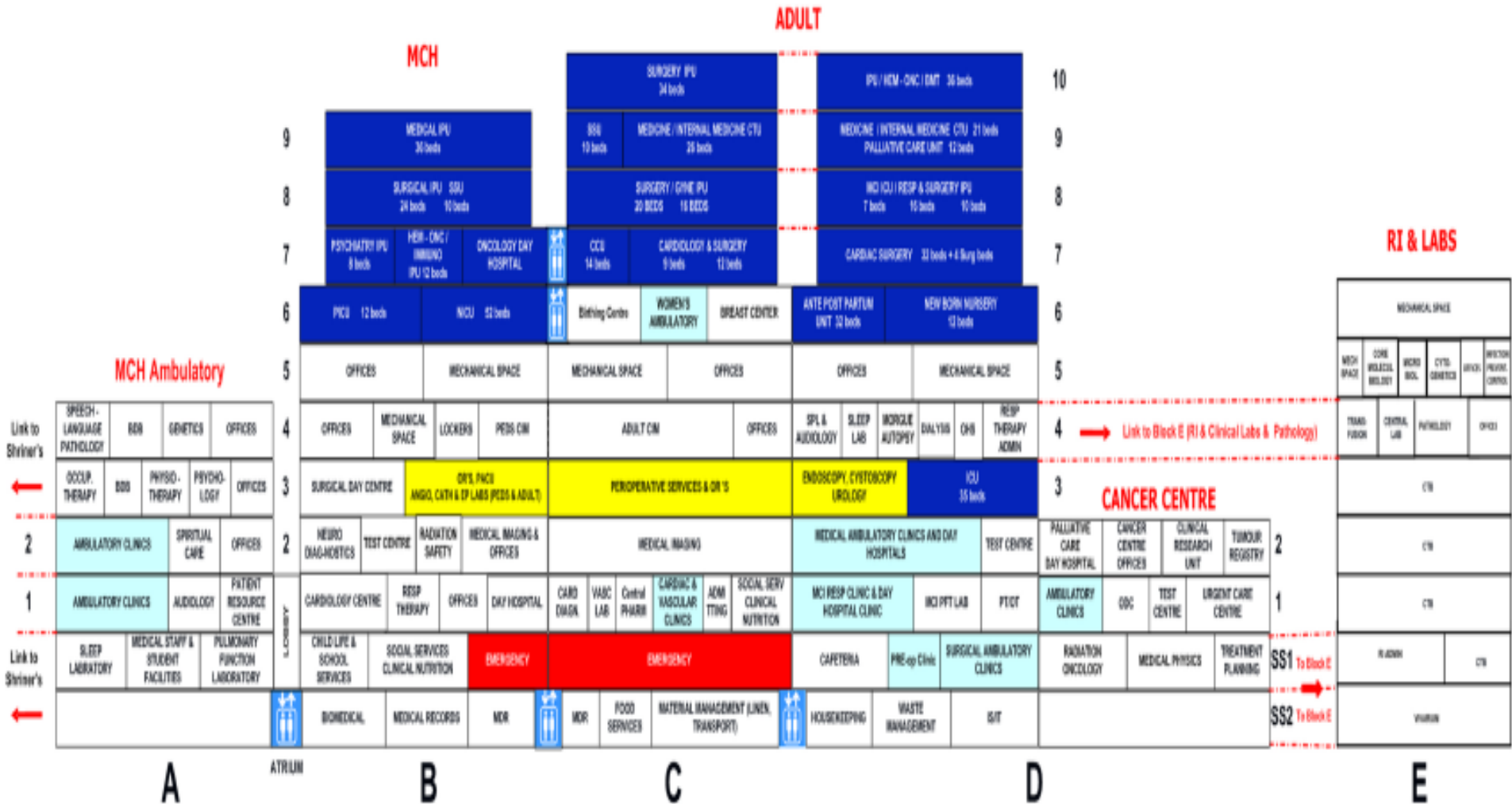
General medicine/surgery
Emergency
Ophthalmology
Geriatric Medicine
Bariatric Surgery
Long-term Care

Neuro

Neurology
Neurosurgery



Glen site stacking diagram



Construction Update

Construction Update

- The Glen site is more than 80% complete.
- Paving of roads and walkways is complete. Landscaping underway. 50 of 370 trees planted.
- Exterior cladding 37% complete.

Interior:

- Drywalling almost complete
- Installation of ceilings and floors underway
- Painting underway and finished in several areas.
- Installation of medical equipment underway.

Research Labs





Women's Health: inpatient room

Main Galleria



Adult ER under construction



2015 Transfers



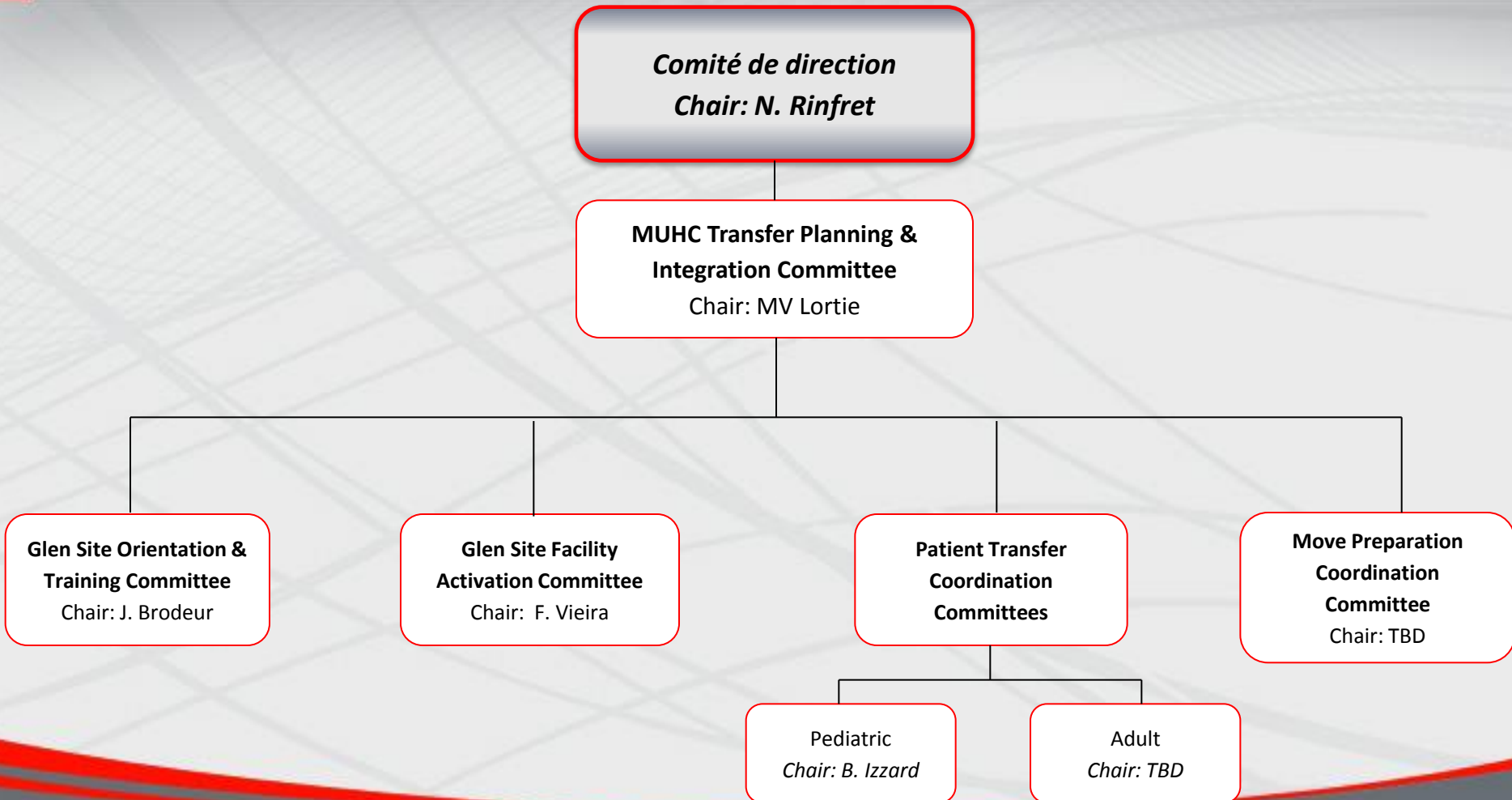
MUHC 2015: The Transfers



HCR

- A Canadian Company
- In business for more than 20 years
- Assisted and moved more than 300 hospitals
- They bring us a proven methodology
- Competent team members
- Patrick Moriarty: President of HCR

Transfer Committees



Milestones

Milestones

- Operational Commissioning Plan
 - September 30th, 2013
- Transfer Plan
 - April 3rd, 2014
- Activation of the Glen Site
 - From October 1st, 2014
- Implementation of Transfer Plan
 - Starting Spring 2015

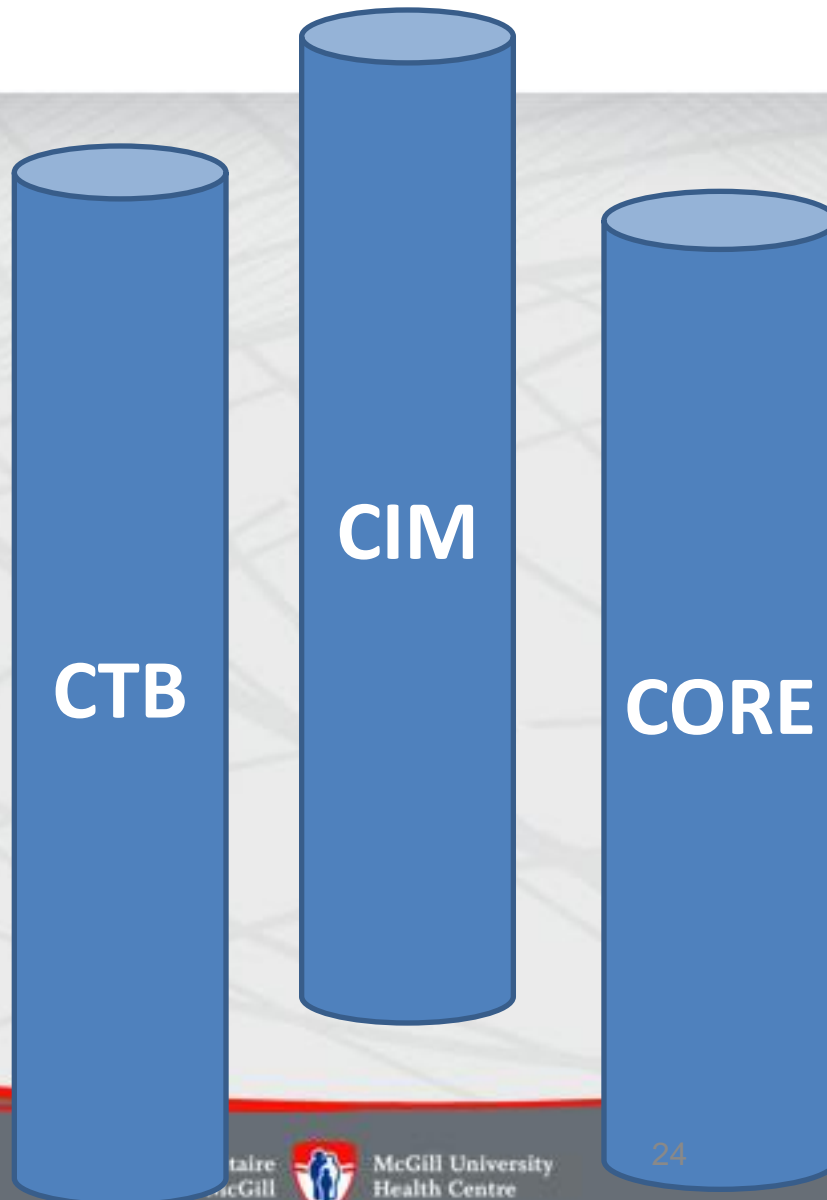
Research at the Glen site

Research Institute of the MUHC

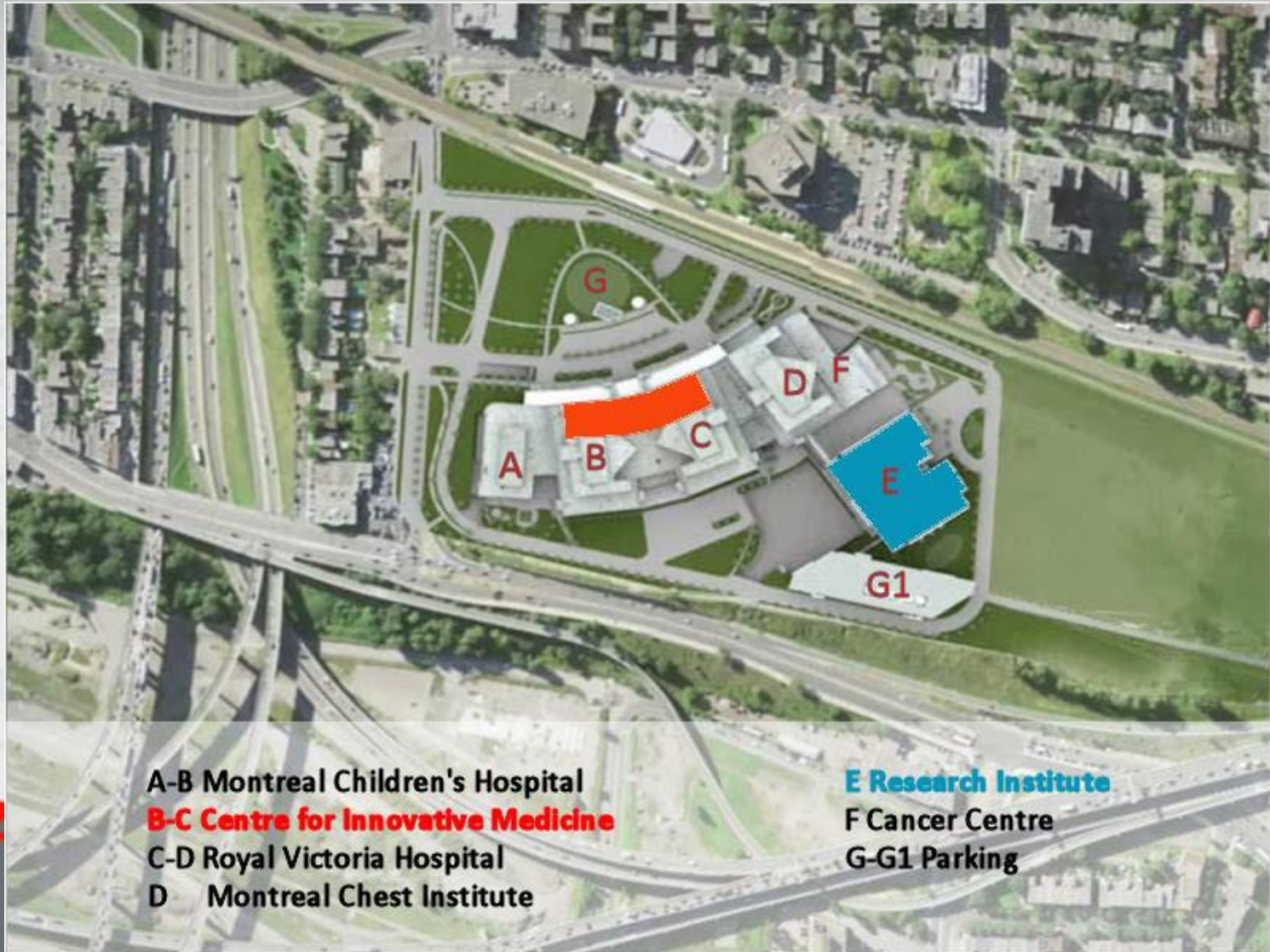
Vision

- Bridge the gap between biomedical research and clinical medicine
- Speed innovation & accelerate the translation of basic discoveries to public uses
- Bring together pediatric and adult research programs
- Focus on improving the health of individual patients throughout their life cycle
- Set the stage for the transition to patient centric medicine

RI-MUHC Structure



Research at the Glen site



Teaching at the Glen site



Teaching at the Glen site

Some facts

- The entire facility will be Wi-Fi
- More than half of all teaching spaces are equipped for TeleHealth
- Large amphitheatre located in the RI (200 people)
- Large meeting rooms will be managed through central booking
- Over 3,000 lockers for staff and students across the site
- 28 on-call rooms throughout the site
- Large lounge dedicated to residents with smaller meeting rooms spread throughout (e.g. resource centres)

Teaching spaces

- Total of 186 meeting/teaching spaces at the Glen site
- Rooms vary in size:
 - 72 small (seat 6-10 people, are 0-17 sq m in size)
 - 59 medium (seat 10-20 people, are 17.1-25 sq m in size)
 - 55 large (seat 20+ people, are 25.1 + sq m in size)
- Total of 24 meeting/teaching spaces in the RI (Block E)
 - 1 small
 - 15 medium
 - 8 large

Next Steps

- McGill-MUHC teaching work group created
 - Aim: address the Faculty of Medicine's teaching space requirements at the Glen site and find ways to best accommodate them in the existing infrastructure.
 - All information/decisions coming from this group must be communicated to the FoM and the Redevelopment Core Steering Committee at the MUHC.

Current Clinical Shortfalls



Current Clinical Shortfalls

- Almost all programs, services & departments have been assigned a new location based on clinical plan parameters.
- There are still 4 issues being discussed with the Agence / MSSS / Partners
 - Beds
 - Ambulatory visits
 - Programs:
 - Dialysis
 - IVF
 - Ophthalmology
 - Core labs (RI)
 - Offices

Next steps: Clinical Shortfalls

- The Redevelopment Core Committee is addressing these issues.
- Tripartite committee made up of MUHC, Agence and MSSS addressing regional implications of the clinical plan.

Opportunities

- Growth in complex care cases
- Improve our functioning /Implement uniform standards
- Teaching innovations
- Liaise more effectively with other institutions and with each other
- Optimized use of technology

Questions?