

Faculty of Medicine 2017-2022

David Eidelman

Vice Principal, Health Affairs and
Dean, Faculty of Medicine

Outline

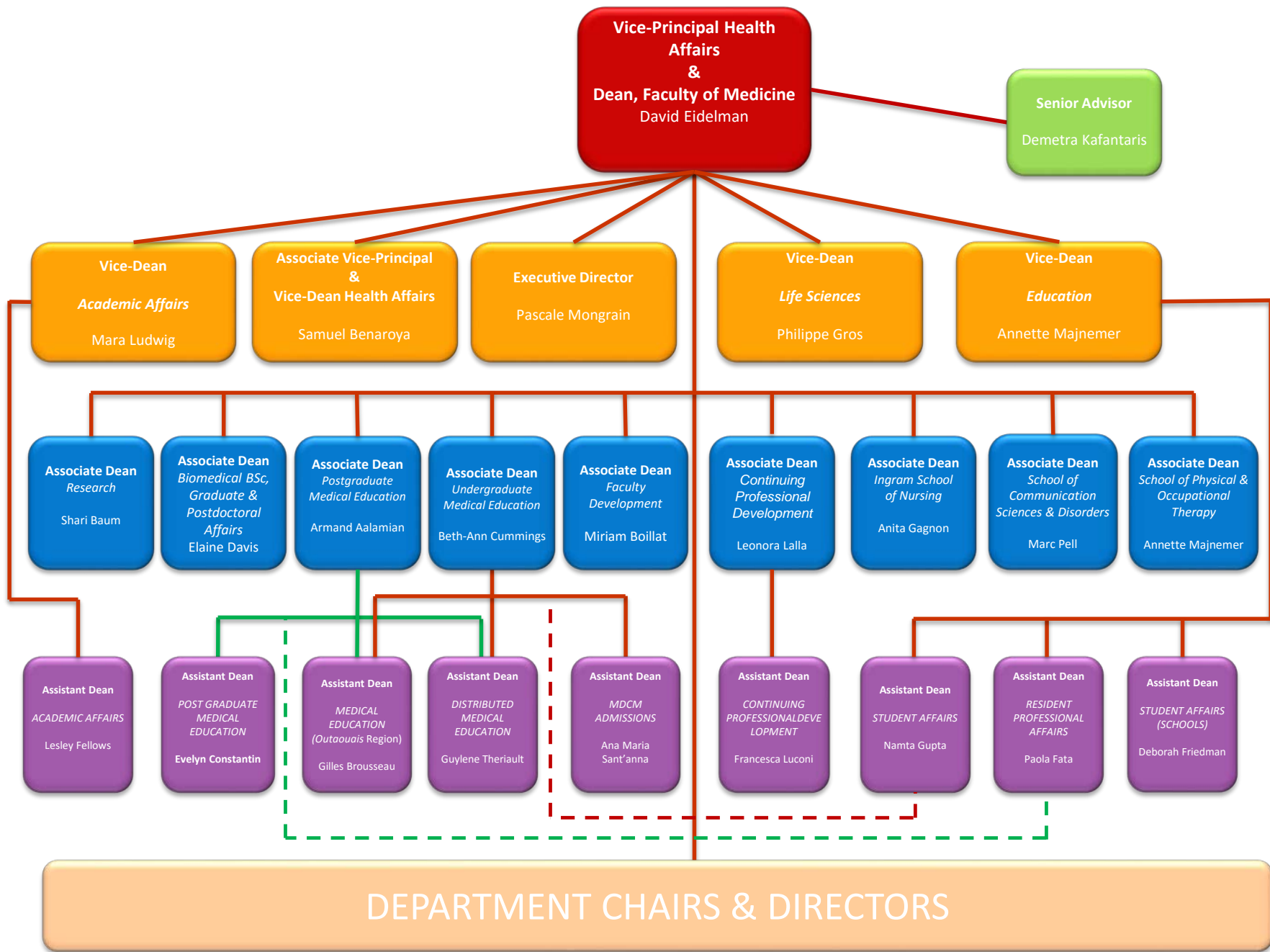
- Governance
- Space
- Next steps



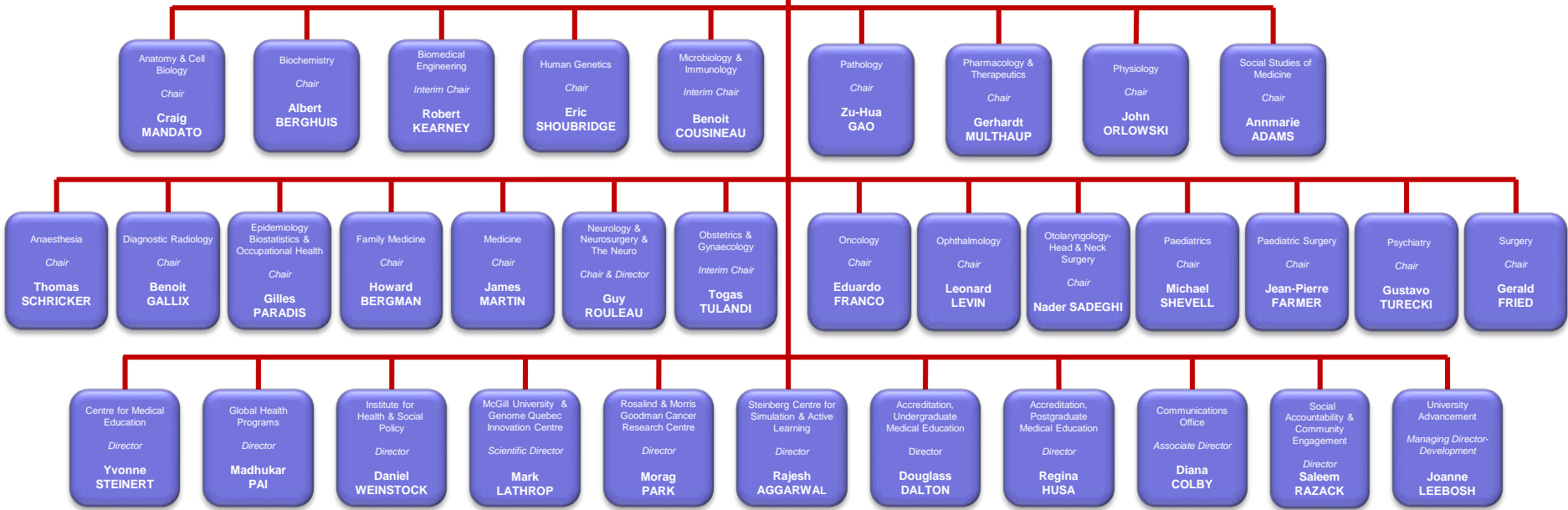
GOVERNANCE

VP/Dean Team

- Dean's Operations Committee
 - Sam Benaroya, AVP&VD Health Affairs
 - Philippe Gros, VD Life Sciences
 - Mara Ludwig, VD Academic Affairs
 - Annette Majnemer, VD Education
 - Pascale Mongrain, Executive Director
- Support
 - Demetra Kafantaris, Senior Advisor
 - Fern Charles, Executive Assistant
- 41 Additional Direct Reports



**Vice-Principal Health Affairs
&
Dean, Faculty of Medicine
David EIDELMAN**



Faculty of Medicine – Chairs & Directors

Last update – April 13, 2017

Unsustainable

- Too many direct reports
- Unable to support chairs and unit directors
- Not always clear what issues relate to the Faculty as a whole
- Medical education dominates the discussion
- Medical education does not always get the attention it deserves

We need to:

- Organize the Faculty into larger components that better support our missions
- Ensure that all educational programs have the resources they need for success
- Promote collaboration across disciplines in both research and education
- Promote interprofessional education
- Promote translational research

Independence Model

- Create separate faculties/Schools for each health profession:
 - Medicine +/- Dentistry
 - Nursing
 - Public Health
 - Other professions
- U of T, U of A, U de M

Hybrid Model

- Nursing and Public Health Separate
- P&OT, Communication in School of Medicine
- Possibly overseen by an *Executive Dean* or *Vice-President, Health Affairs*
- Sharing of resources when deemed necessary but functioning autonomously
- GW, University of Washington, Wash U

Unified Model

- Create overarching faculty with multiple schools:
 - Faculty of Health Sciences
 - Faculty of Medicine and Health Sciences
 - College of Health Sciences
- Manitoba, Hebrew, Liverpool, Sydney

What about McGill?

- Dentistry will remain apart for the present time
- Nursing in transition but on-track
- SPOT, SCSD are doing well
- Medical Education is fragmented
 - UGME, PGME, CPD
- Shared services starting to succeed:
 - Admissions, assessment and evaluation, accreditation, WELL, simulation, Centre for Med Ed

What about Research?

- Little relation between traditional governance structure and research success
 - Neuroscience
 - Innovation Centre
 - Goodman
 - Hospital research centres (RI-MUHC, LDI, Douglas)
- Do we need separate research governance?

Faculty of Health Sciences?

- Schools
 - Medicine
 - Ingram School of Nursing
 - SPOT
 - SCSD
 - SPGH
- Institutes
 - Medical Sciences
 - Neuroscience
 - Health Sciences Education

School of Medicine

- Dean of Medicine?
- UGME
- PGME
- CPD
- Clinical Departments responsible for UGME/PGME

School of Population and Global Health

- Associate Dean
- Epidemiology
- Biostatistics
- Occupational and Environmental Health
- Global Health
- Health Policy

Institute of Medical Sciences

- Director
- Anatomy and Cell Biology
- Biochemistry
- Biomedical Engineering
- Human Genetics
- Microbiology and Immunology
- Pharmacology
- Physiology



SPACE

Space is our biggest challenge

- Teaching space
 - Capacity
 - Quality
- Research space
 - Dry lab
 - Wet lab
- Social interaction space
 - Need something like Stanford's Bio-X (biox.stanford.edu)

Health Sciences Campus?

- We need an alternative to the RVH site
- Opportunities
 - McIntyre neighborhood
 - Powell
 - Other?
 - Strathcona renovation?
 - Repurpose Duff?

Urgent needs

- Basic Science
 - Anatomy and Cell Biology, Bioengineering, Microbiology and Immunology
- Education
 - Interprofessional education, group learning
- School of Population and Global Health
 - What to do until the RVH is ready?

Where to find space?

- Rental
 - 680 Sherbrooke
 - 2001 McGill College
 - Glen adjacent
- Renovation
 - Strathcona
- Construction
 - Powell
- Purchase
 - ?



QUESTIONS

Governance

- Does the unified governance model work for McGill?
- Do we need separate governance for research?
- How should the campus and the clinic be accommodated in our governance?

Space

- How should we decide on the use of scarce space resources?
- What can we do to increase the quality and amount of educational space?
- What can we do to increase the quality and amount of research space?