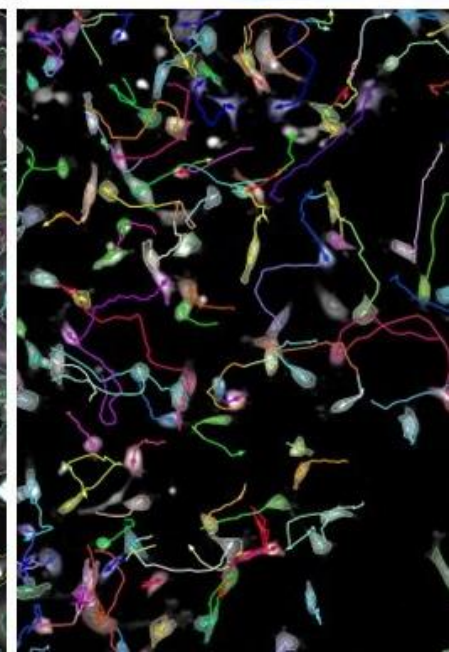
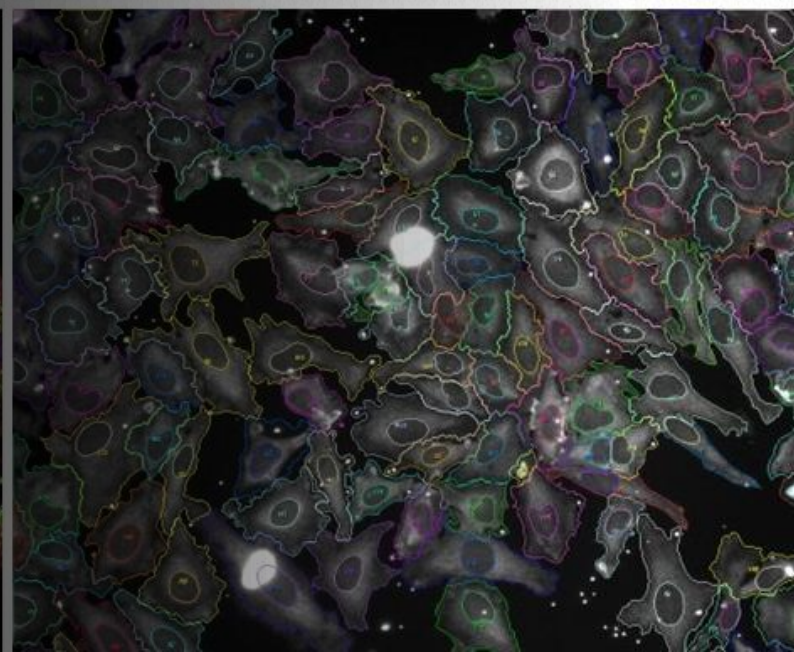
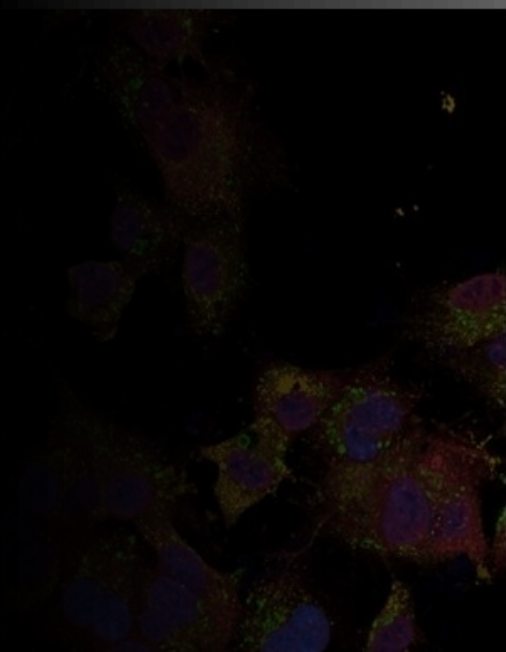
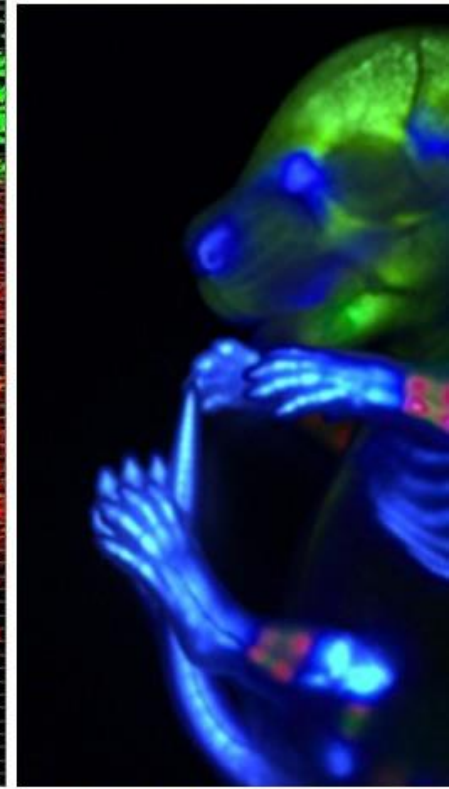
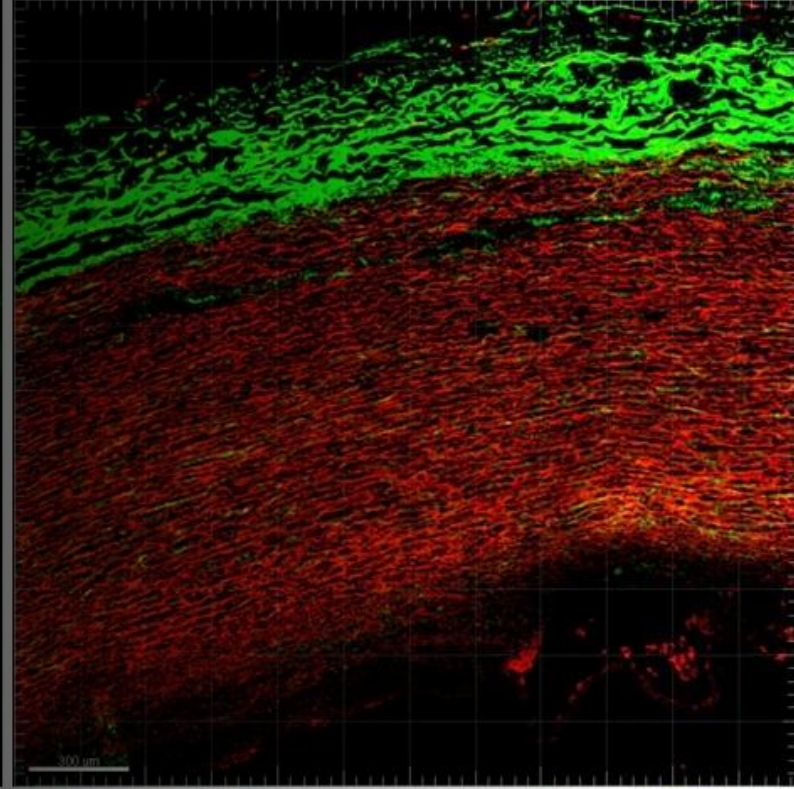
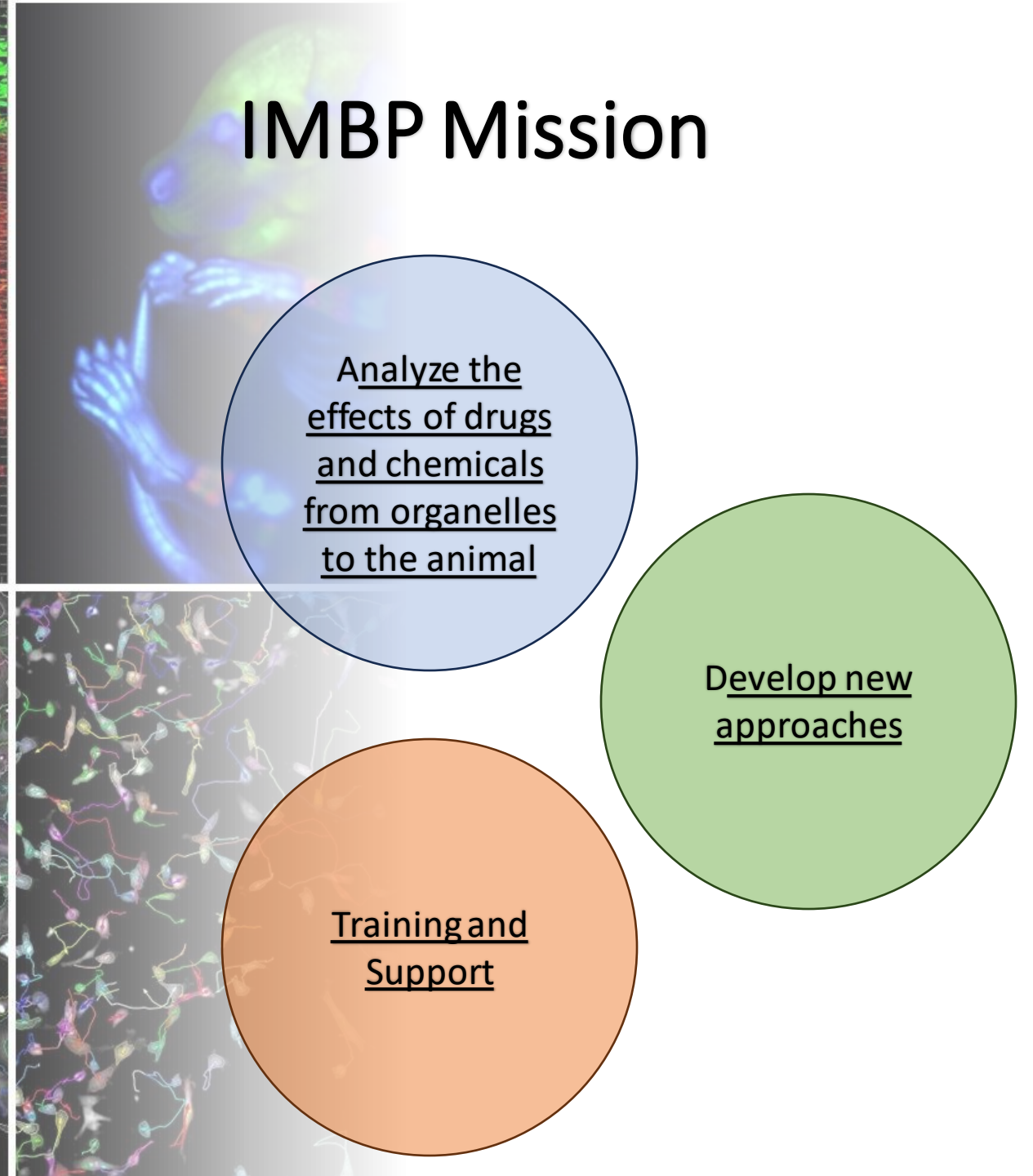
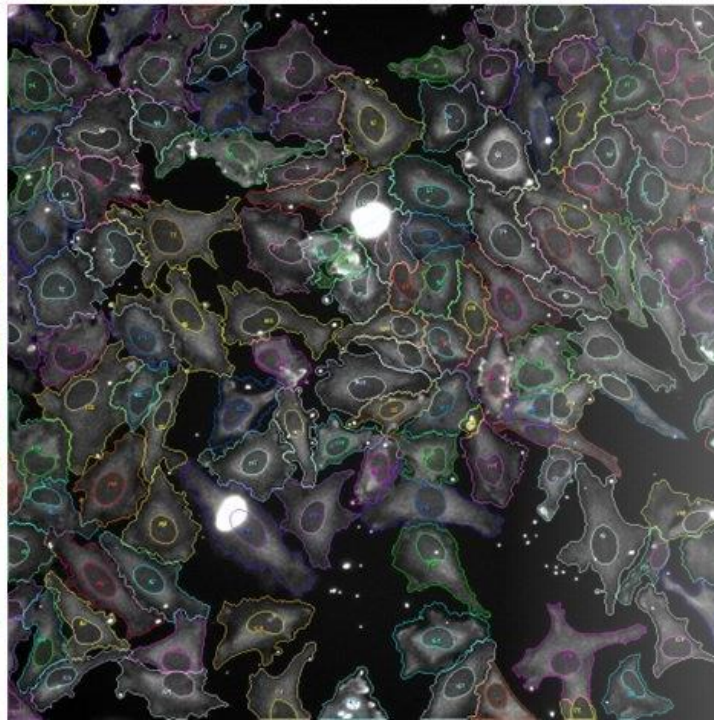
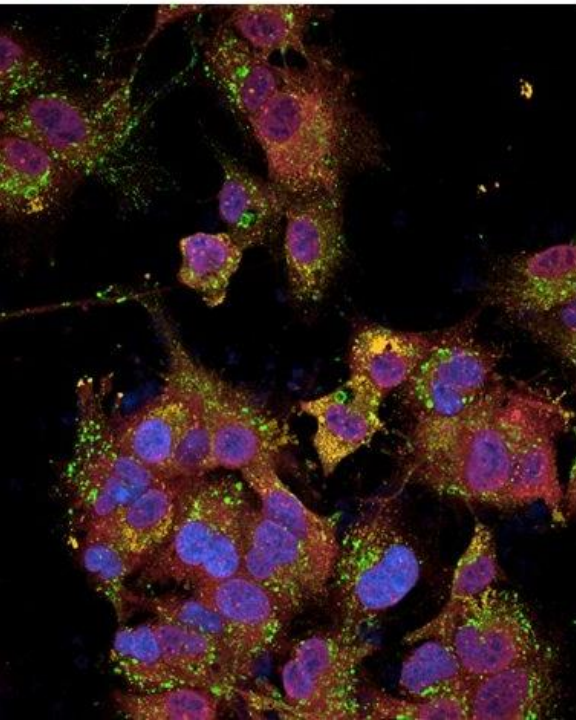
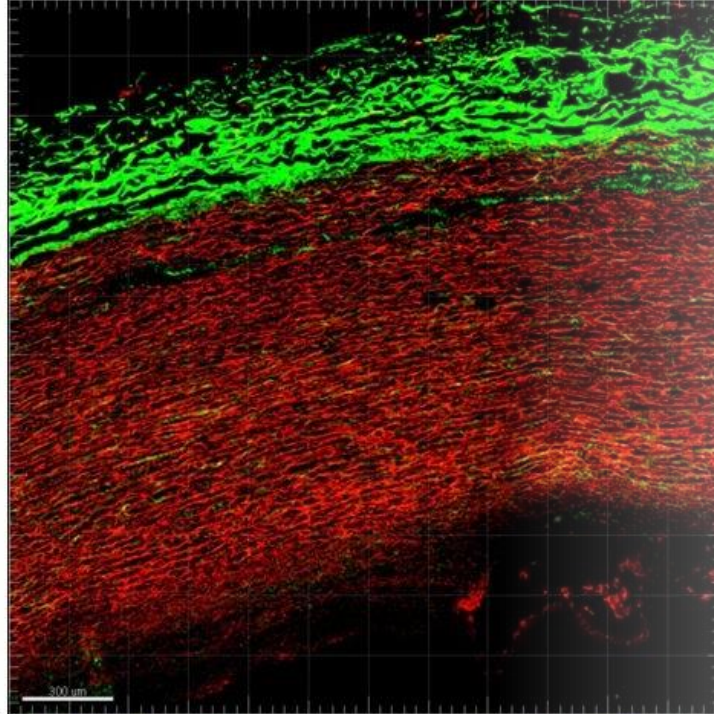
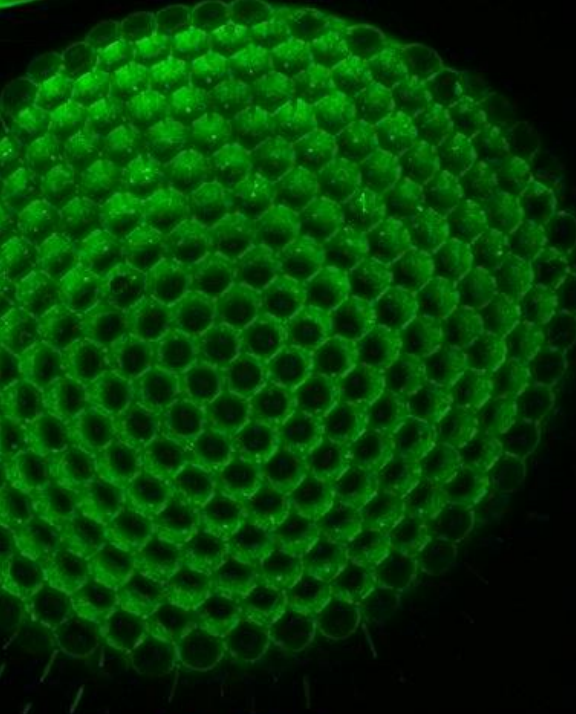




Imaging and Molecular Biology Platform

From the Genome to the Living
Animal



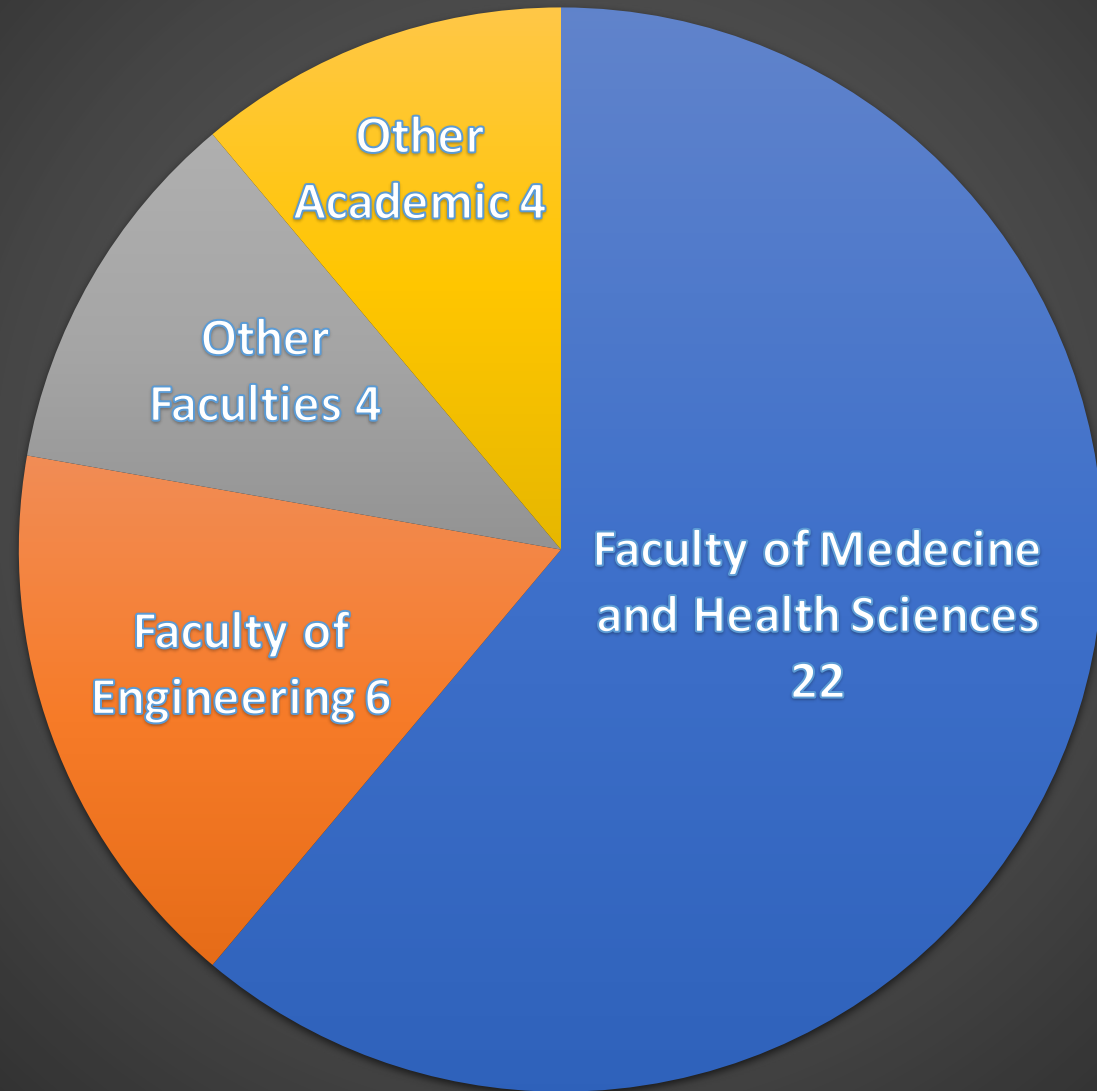


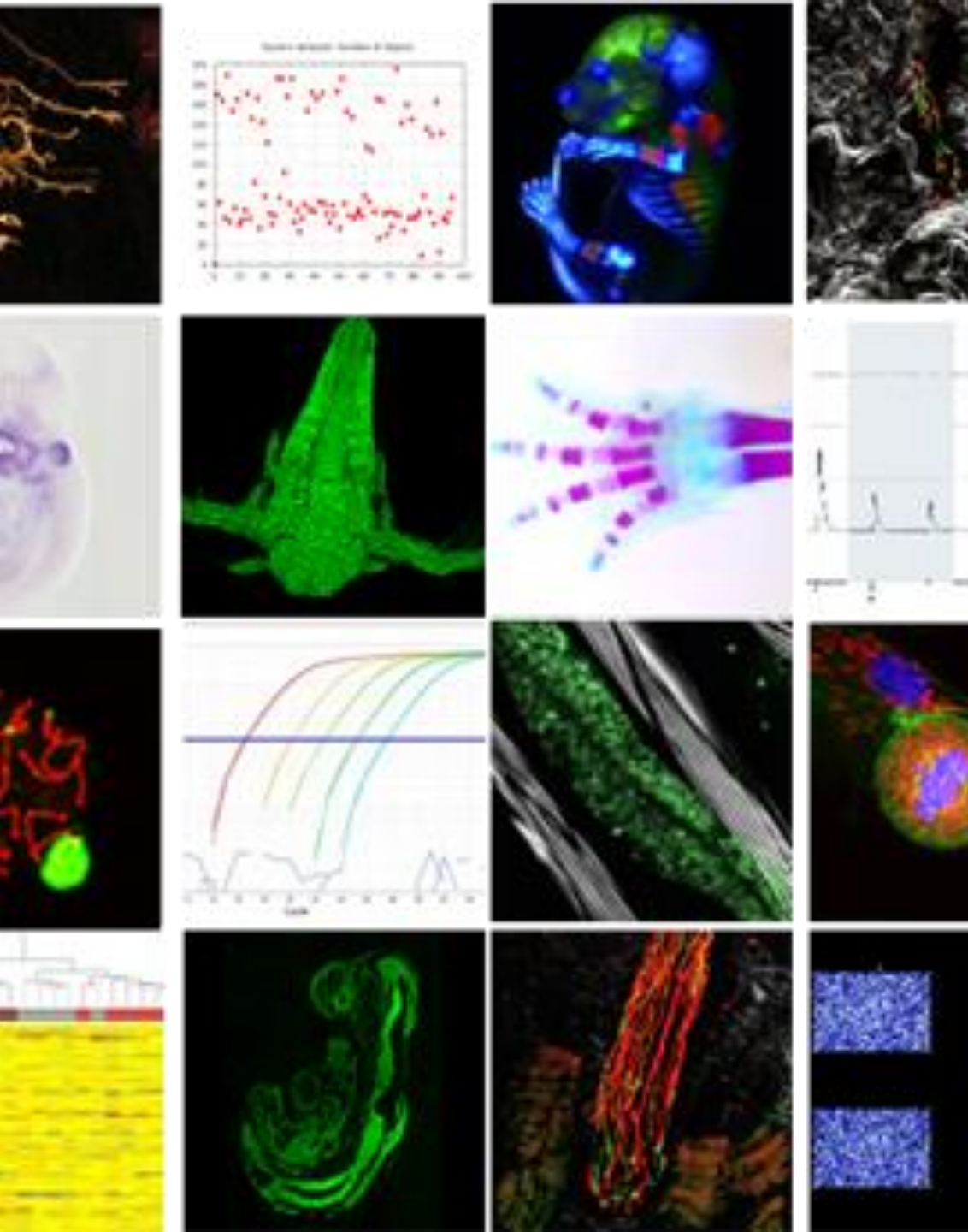


Management Team

96 unique
users in
2023

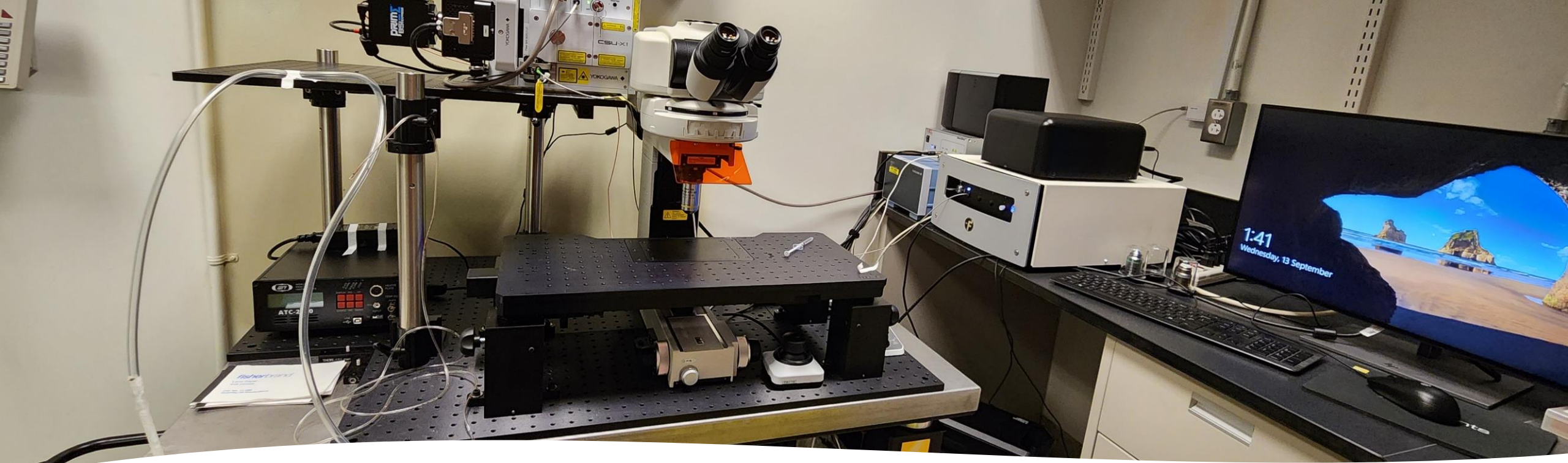
Laboratories per Faculty



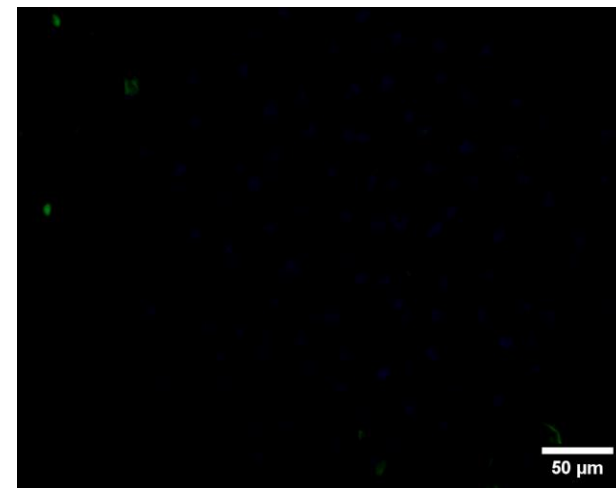
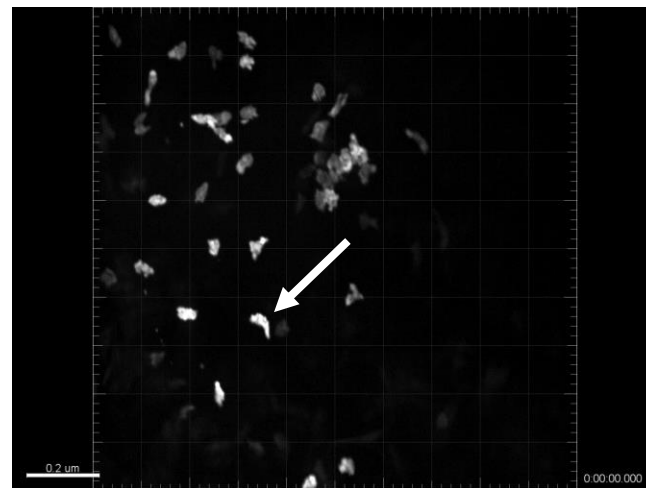
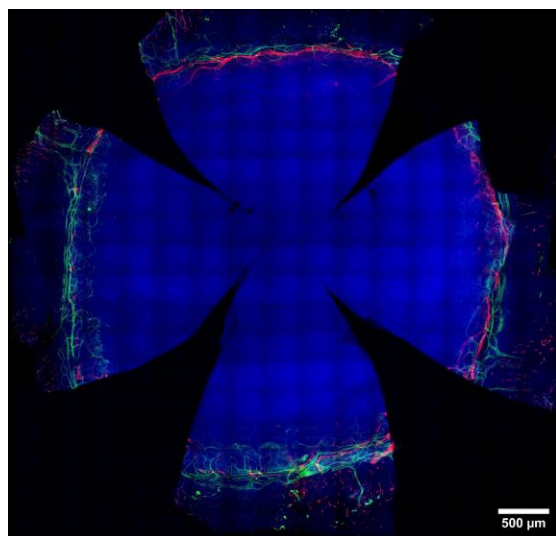


Equipment

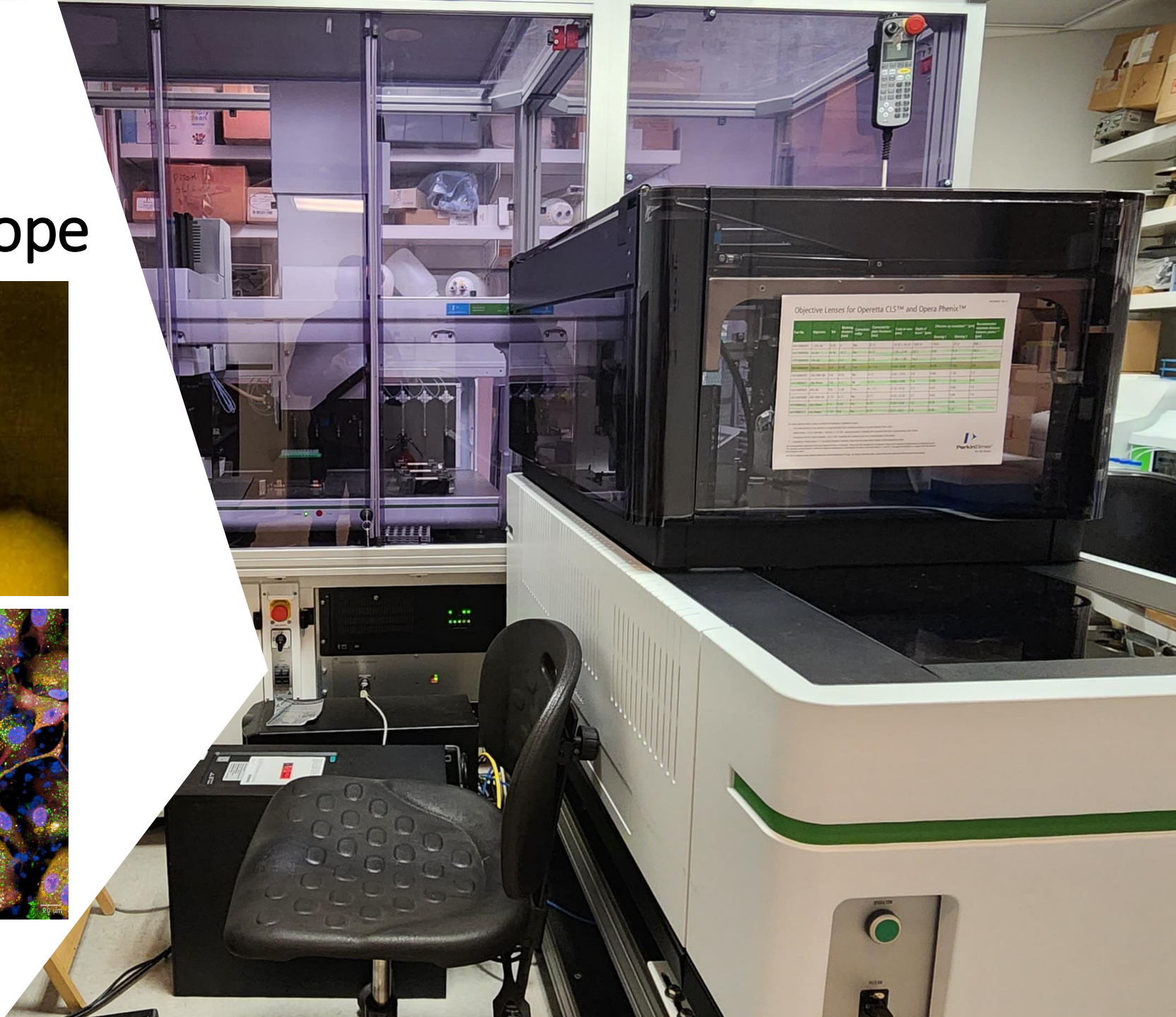
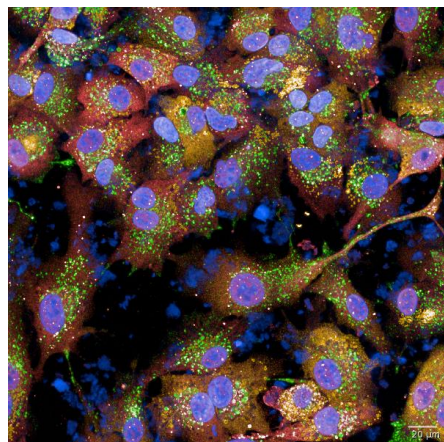
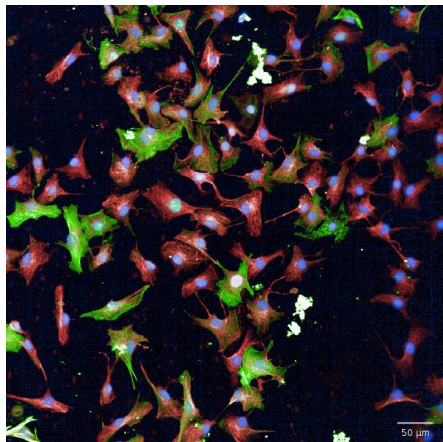
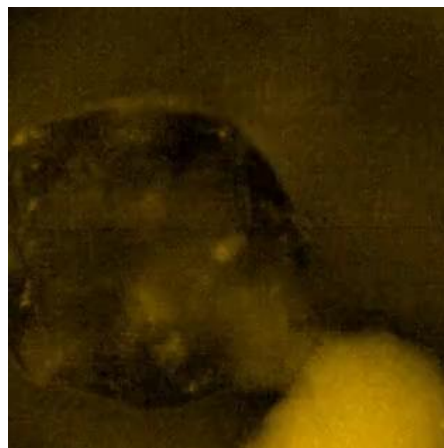
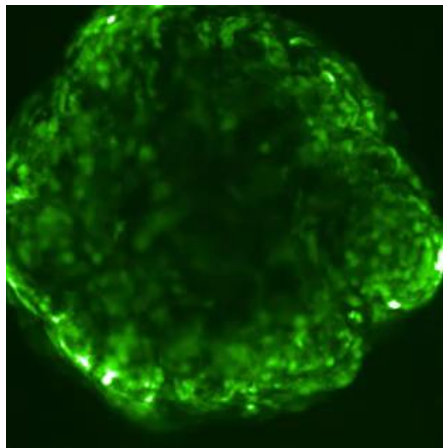
- Imaging
 - Fluorescent Microscopes
 - Automated Microscopes
 - Confocal Microscopes
- Molecular biology
 - Bioanalyzer services
 - qPCR
- Histology
 - Liquid Handling for slide staining
 - Cryostat
 - Parafilm embedding



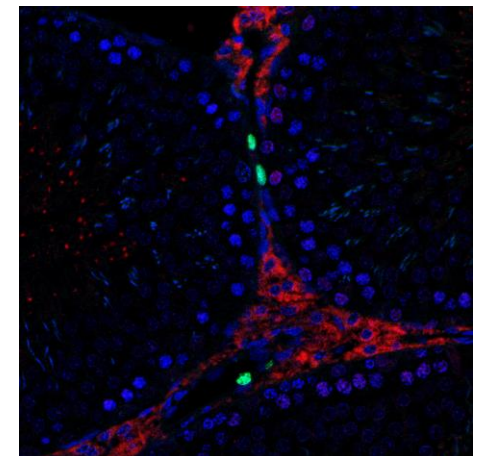
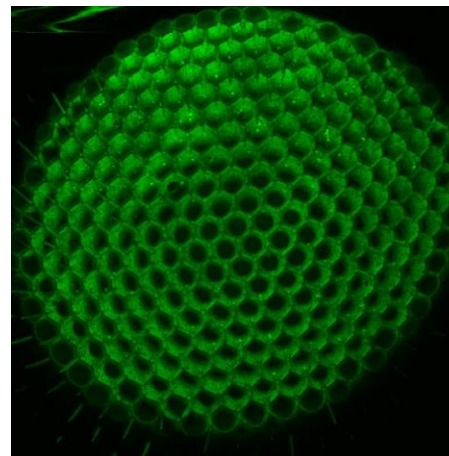
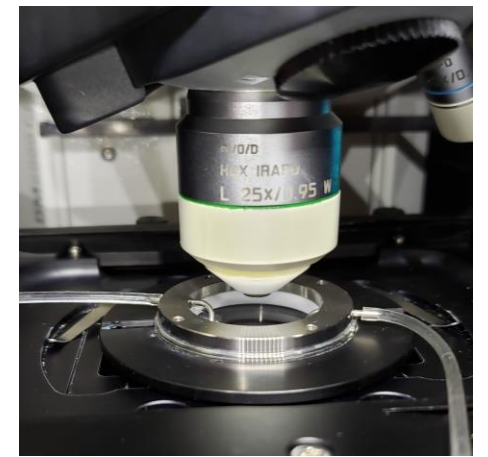
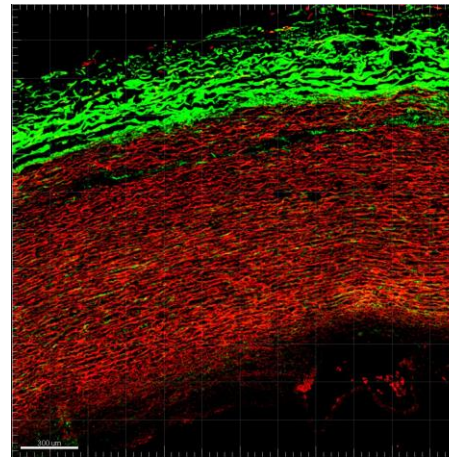
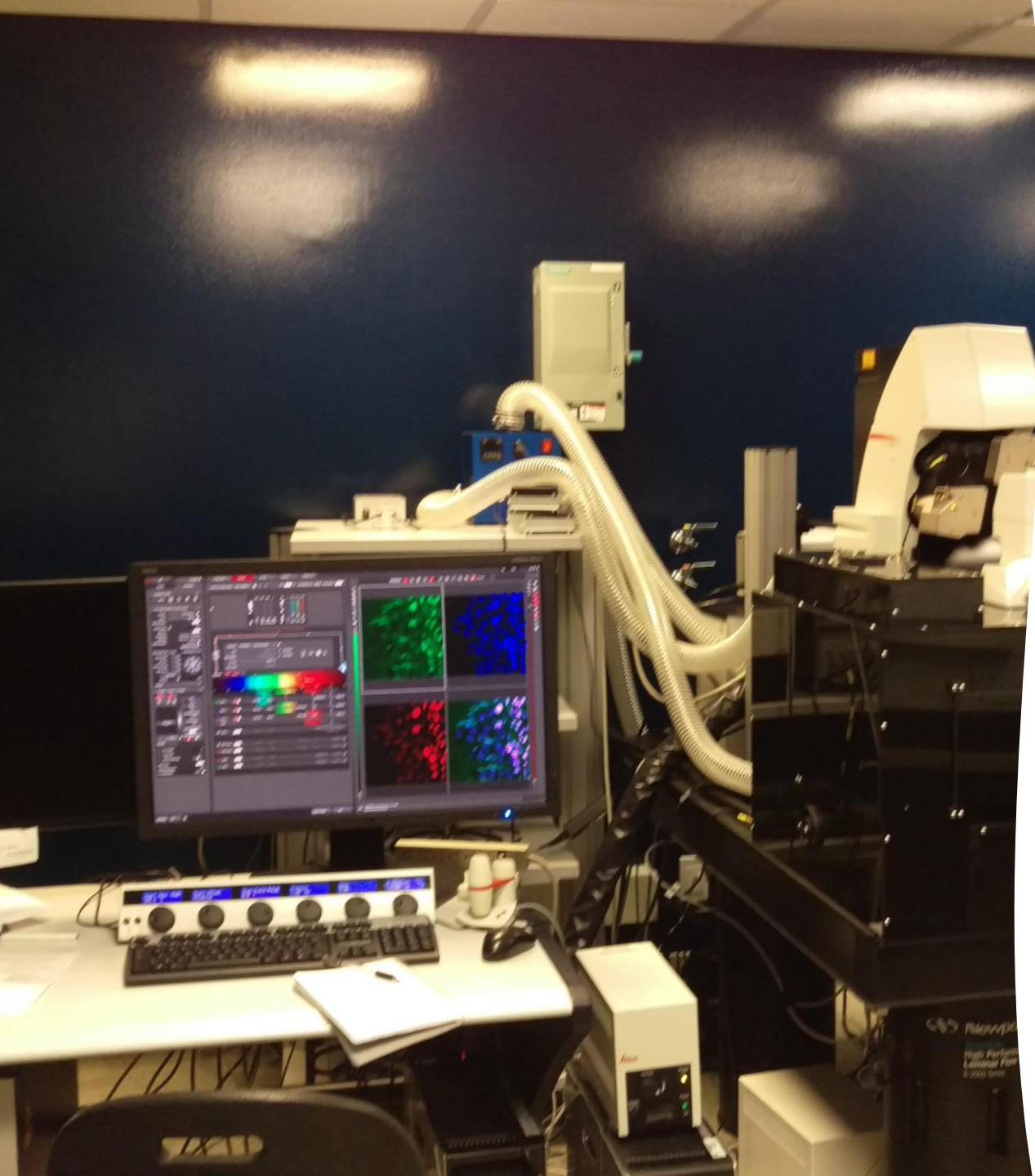
Spinning Disk Microscope Nikon CSUX-1



Perkin Elmer Opera Phenix Plus High Content Microscope



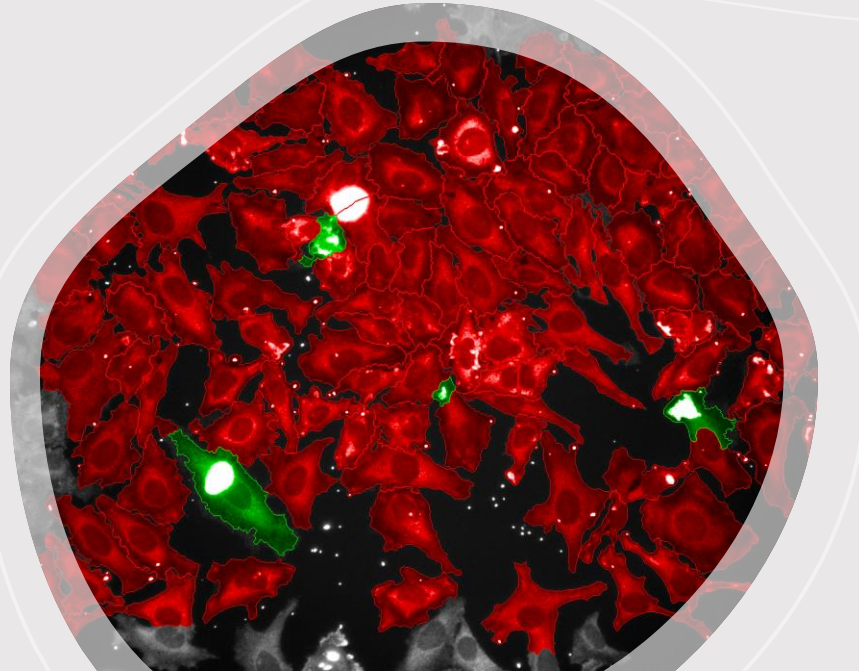
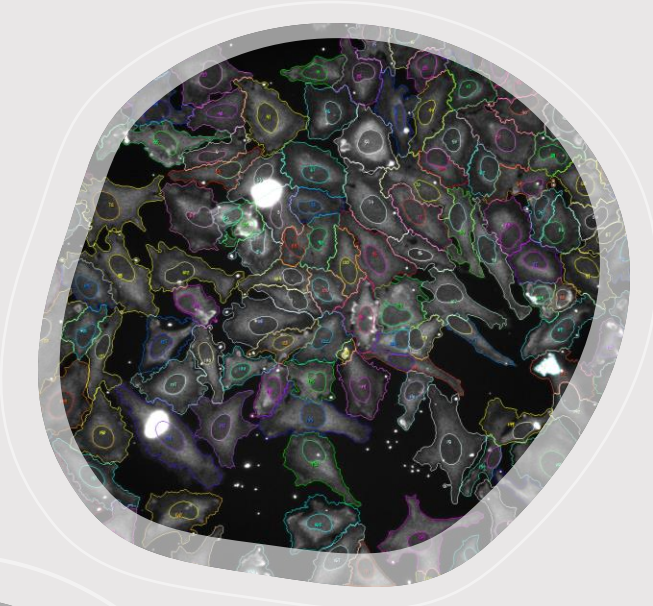
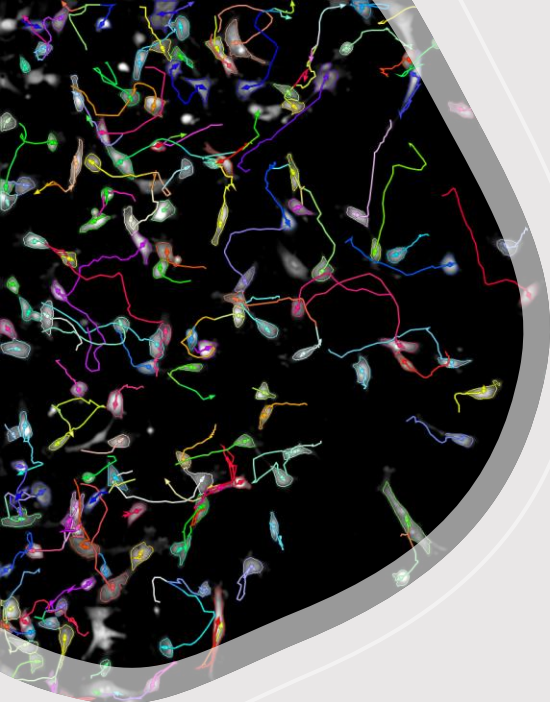
Laser Scanning Confocal and two-photon Microscope Leica SP8



The background of the slide features a grayscale image of an Agilent 2100 bioanalyzer. The device is a large, complex piece of laboratory equipment with a prominent, curved, perforated metal structure. The lighting is dramatic, highlighting the textures and curves of the machine against a dark background. A white, torn-edge paper graphic is overlaid on the left and top portions of the image, serving as a backdrop for the text.

Agilent 2100 bioanalyzer (Services)

- RNA analysis
 - Total RNA, mRNA and small RNA analysis.
 - High sensitivity quality control of RNA samples.
 - Quality and concentration of cRNA probes.
- DNA analysis
 - High resolution and quantification of DNA.




Imaging softwares

- **Bitplane Imaris 9.1.2**
 - 3D reconstruction, Colocalization, surface rendering, etc.
- **Volocity 6.3.1**
 - 3D reconstruction and Colocalization for high content data
- **Columbus Server (2D) and Harmony 5.1 (3D) HCS Softwares**
 - Nuclei, cells, spots, micronuclei and neurites detection.
 - Selection of populations, machine learning and cell tracking option
 - intensity, morphology and texture properties and more...



Acknowledgement



Contact Information

- Imaging and Molecular Biology Platform (IMBP)
Nicolas Audet, PhD.
McIntyre Building, Room 1333.
imbp.pharma@mcgill.ca
514-399-9501