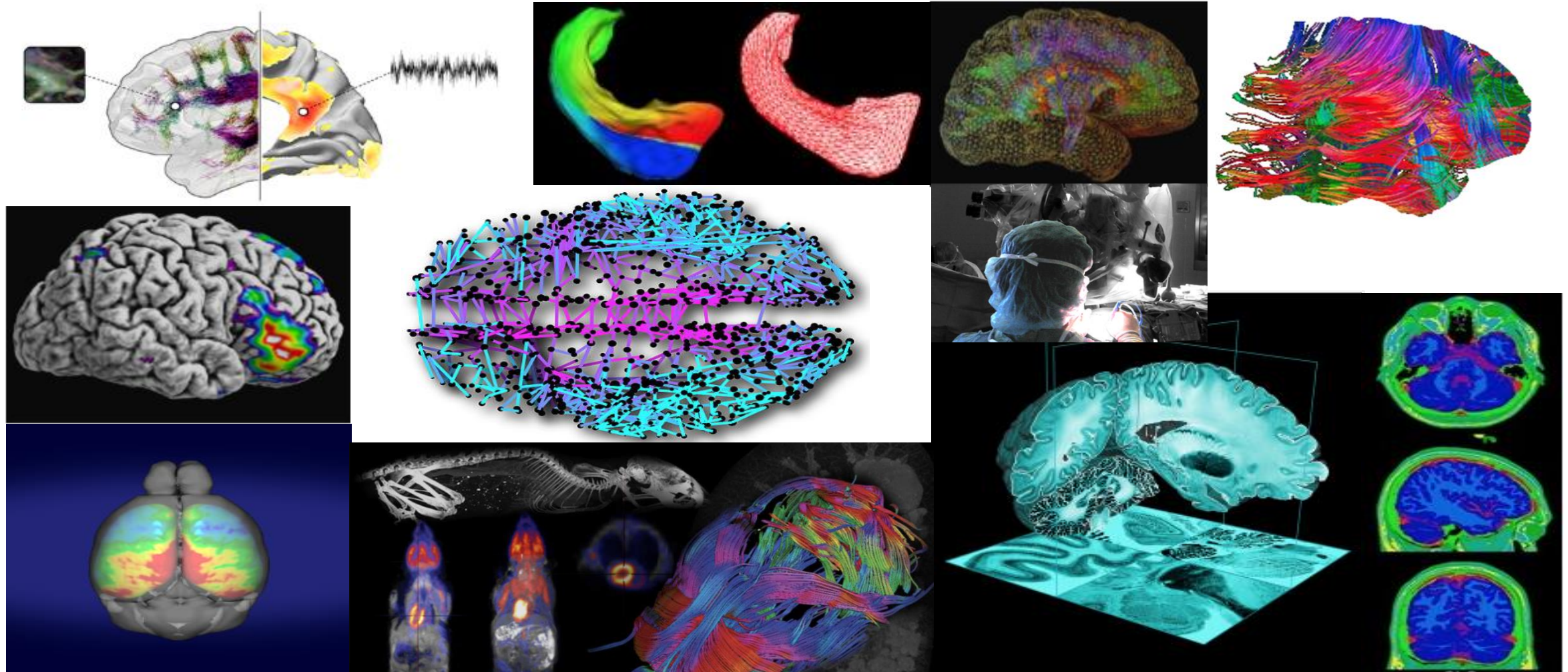


McConnell Brain Imaging Centre (BIC) Neuroimaging & Neuroinformatic Research Group

Director: Julien Doyon, Ph.D., FRSC, FCAHS



McConnell Brain Imaging Centre (BIC)

Faculty members (n=31)



U. Anazodo



D. Arnold



S. Baillet



A. Bernasconi



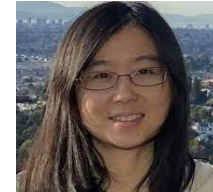
N. Bernasconi



B. Bernhardt



D. Bzok



X. Chai



J. Cléry



L. Collins



A. Dagher



J. Doyon



S. Ducharme



A. Evans



R. Hoge



A. Kostikov



M. Leyton



G. Massarweh



Y. Iturria-Medina



B. Misic



S. Narayanan



J.B. Poline



P. Rosa-Neto



D. Rudko



A. Shmuel



D. Small



J.P. Soucy



N. Spreng



C. Lucas Tardif



S. Villeneuve



R. Zatorre

McConnell Brain Imaging Centre (BIC)

Who we Are:

- One-of-a-kind multidisciplinary, fully research-dedicated, regional neuroimaging centre.
- Group of researchers with interests covering a wide spectrum of neuroimaging and neuroinformatics scientific domains.
- Experts in the study of the healthy brain as well as neurological and psychiatric conditions.
- Leaders in various local, national and international neuroimaging initiatives.
- Developers of multimodal data pre-processing, analysis and visualization tools, as well as neuroinformatic platforms allowing data sharing and the promotion of Open Science.

McConnell Brain Imaging Centre (BIC)

Infrastructure: 7 Platforms

Human

1

MRI Unit



Siemens 3T

3

PET Unit



Siemens HRRT

5

Radiochemistry Unit



IBA Cyclotron

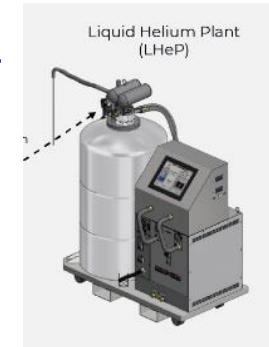
6

MEG Unit



CTF 275 channels

✓



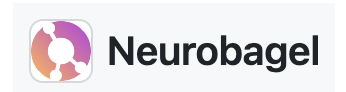
Helium Recycler

7

Neuro-Informatic Unit



Computing & Network Services

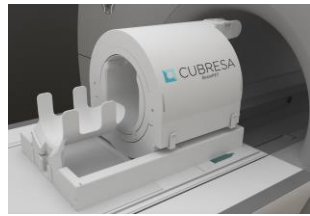


Pre-clinical

2



Siemens 7T Terra



PET/7T MRI Insert

4



Cubresa μ-PET Insert

Planned upgrades at the BIC



IBA Cyclotron: Kiube



Radiochemistry laboratories

✓ = Newly funded equipment

McConnell Brain Imaging Centre (BIC)

Unique Infrastructure: Translational Research

Human

1

MRI Unit



Siemens 3T

3

PET Unit



Siemens HRRT

5

Radiochemistry Unit



IBA Cyclotron

6

MEG Unit



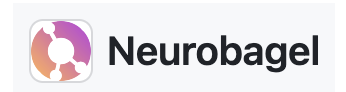
CTF 275 channels

7

Neuro-Informatic Unit



Computing & Network Services



Pre-clinical

2



Siemens 7T Terra



PET/7T MRI Insert

4



Cubresa μ-PET Insert



Laboratories

Planned upgrades at the BIC



IBA Cyclotron: Kiube



Radiochemistry laboratories

✓

Liquid Helium Plant (LHeP)



Helium Recycler

✓ = Already funded

McConnell Brain Imaging Centre (BIC): A Few Statistics 2018 - 2022

HQP (n=25)

Total Nb of Users (n=107)

McGill Internals = 71

External Institutions = 36

+CRU

Avg.: > 60 PI's/year

From The Neuro, McGill & Other Institutions

Avg.: 4,149 hours

Scans / Year (without 2020-2021)



Average number of trainees/year

Undergraduates	M Sc/Ph.D	Postdocs	Lab staffs
49	130	53	98

Total new grant funding/year awarded to BIC Faculty as PI or co-PI: Avg. \$28.5M/year from 2018-2022.

2018	2019	2020	2021	2022
\$16,571,806	\$31,164,968	\$28,774,634	\$48,253,518	\$17,608,285

Publications: Total = 1659 papers 2018-2022); Avg. 332/year

