

Importing DMTI clutter data into ArcGIS

Clutter data is a raster data set which shows land use in 11 different categories. Each number in the file corresponds to a pixel in the raster image. A few simple changes to the ASCII.txt file are necessary to import the file into ArcGIS.

Related Guides:

- [Importing binary image data into ArcView & ArcGIS](#)
- [Importing ASCII files into ArcGIS](#)

Requirements:

- ArcGIS 9.0 or later
- [Clutter data](#), available by request from the GIC

Procedure:

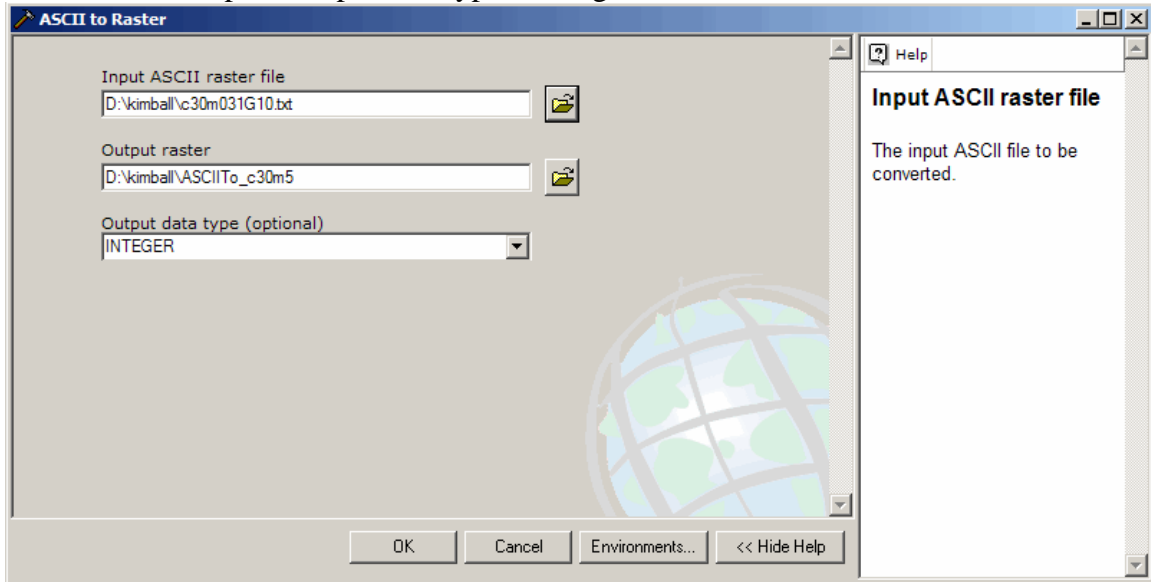
1. Open the ASCII file in NotePad or WordPad. It will look like this:

```

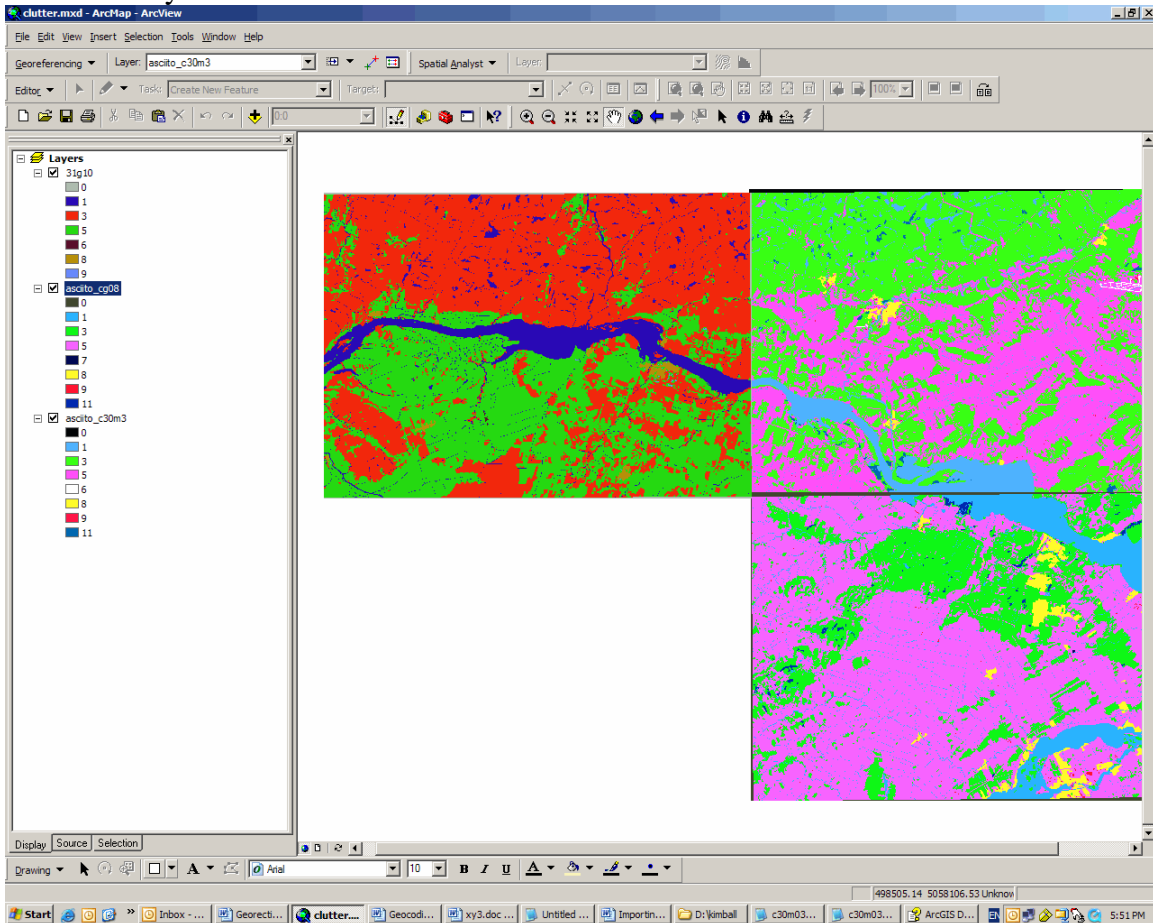
c30m031G10.txt - Notepad
File Edit Format View Help
 ncols          1304
 nrows          932
 xllcorner      499965.00000000
 yllcorner      5038455.00000000
 cellsize       30.00000000
 nClasses 11
 1 "Freshwater" 0 0 255
 2 "Ocean"      0 20 255
 3 "Coniferous Forest" 3 130 0
 4 "Deciduous Forest" 20 130 0
 5 "Open Land"  255 255 255
 6 "Airports"   255 0 125
 7 "Industrial" 255 255 0
 8 "Urban"     255 132 123
 9 "Dense Urban" 255 12 0
 10 "Core Urban" 255 0 255
 11 "Wetland"  132 0 0
0 0 0 0 0 0 0 0 0 0 0 0 0 0 0 0 0 0 0 0 0 0 0 0 0 0 0 0 0 0 0
0 0 0 0 0 0 0 0 0 0 0 0 0 0 0 0 0 0 0 0 0 0 0 0 0 0 0 0 0 0 0
0 0 0 0 0 0 0 0 0 0 0 0 0 0 0 0 0 0 0 0 0 0 0 0 0 0 0 0 0 0 0
0 0 0 0 0 0 0 0 0 0 0 0 0 0 0 0 0 0 0 0 0 0 0 0 0 0 0 0 0 0 0
0 0 0 0 0 0 0 0 0 0 0 0 0 0 0 0 0 0 0 0 0 0 0 0 0 0 0 0 0 0 0
0 0 0 0 0 0 0 0 0 0 0 0 0 0 0 0 0 0 0 0 0 0 0 0 0 0 0 0 0 0 0
0 0 0 0 0 0 0 0 0 0 0 0 0 0 0 0 0 0 0 0 0 0 0 0 0 0 0 0 0 0 0
0 0 0 0 0 0 0 0 0 0 0 0 0 0 0 0 0 0 0 0 0 0 0 0 0 0 0 0 0 0 0
3 3 3 3 3 3 3 3 3 3 1 3 3 3 3 3 3 3 3 3 3 3 3 3 3 3 3 3 3 3 3
0 0 0 0 0 0 0 0 0 0 0 0 0 0 0 0 0 0 0 0 0 0 0 0 0 0 0 0 0 0 0
0 0 0 0 0 0 0 0 0 0 0 0 0 0 0 0 0 0 0 0 0 0 0 0 0 0 0 0 0 0 0
3 3 3 3 3 3 3 3 3 3 3 3 1 1 3 3 3 3 3 3 3 3 3 3 3 3 3 3 3 3 3
~ ~ ~ ~ ~ ~ ~ ~ ~ ~ ~ ~ ~ ~ ~ ~ ~ ~ ~ ~ ~ ~ ~ ~ ~ ~ ~ ~ ~ ~
  
```

2. Highlight the lines of text which explain the code for each number (e.g. 1 "FreshWater" 0 0 255, etc.). Cut the text and paste it into another text file.

8. In the Input ASCII raster file, add your saved .txt file. Change the output name if you want to. Keep the output data type as integer.



9. Click OK. An image will appear. It will align with other clutter files imported in the same way.



The colors will be coded only by a number. Refer to the file containing the information you cut and paste from the original text file.

- 1 "FreshWater" 0 0 255
- 2 "Ocean" 0 20 255
- 3 "Coniferous Forest" 3 130 0
- 4 "Deciduous Forest" 20 130 0
- 5 "Open Land" 255 255 255
- 6 "Airports" 255 0 125
- 7 "Industrial" 255 255 0
- 8 "Urban" 255 132 123
- 9 "Dense Urban" 255 12 0
- 10 "Core Urban" 255 0 255
- 11 "Wetland" 132 0 0

© Walter Hitschfeld Burnside Hall, 5th Floor
805 Sherbrooke Street West Montreal, Quebec H3A 2K6
Tel: (514) 398-7453 Fax: (514) 398-7437
Email: gic.library@mcgill.ca

Prepared by GIC staff: Amy Kimball
Last Updated: March 2007