

# IHSP

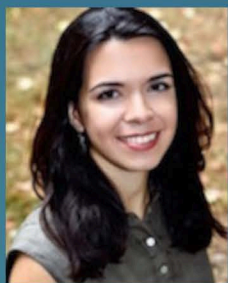
## POLICY TALKS

### Webinar Series

### April 13<sup>th</sup>

### 12:30-1:30 EST

# Remapping the Social Determinants of Health & Wellbeing: Childhood Neurodisability, Ecosocial Theory, and the Future of SDOH



**Dr. Angela Marques Filipe**,  
CIHR Fellow, Wenner-Gren Writing  
Fellow; affiliate member of the Division of  
Transcultural Psychiatry, McGill  
University.



**Dr. Lucyna Lach**,  
Associate Professor, Social Work; member  
of the Centre for Research on Children  
and Families & Institute for Health and  
Social Policy, McGill University.

While much has been already said about the social determinants of health (SDoH) framework, little is known about its challenges and potentials in the context of childhood neurodisability, where questions of wellbeing, neurodiversity, and social justice take centre stage. The webinar explores these questions in light of current debates and of an ecosocial, research-action oriented framework that is relevant to families, practitioners, advocates, and decision-makers, both in times of COVID-19 and beyond.

**REGISTRATION REQUIRED:** [https://mcgill.zoom.us/meeting/register/tZYud-utqjktHtRB\\_-KtHzN8AbQblO29tXtK](https://mcgill.zoom.us/meeting/register/tZYud-utqjktHtRB_-KtHzN8AbQblO29tXtK)

Talks will be recorded and posted at <https://www.youtube.com/channel/UC1peo5J2pih7qnKp1uFe4sQ>



CENTRE FOR RESEARCH  
ON CHILDREN AND FAMILIES



CENTRE DE RECHERCHE  
SUR L'ENFANCE ET LA FAMILLE



**McGill**

Department of  
Sociology