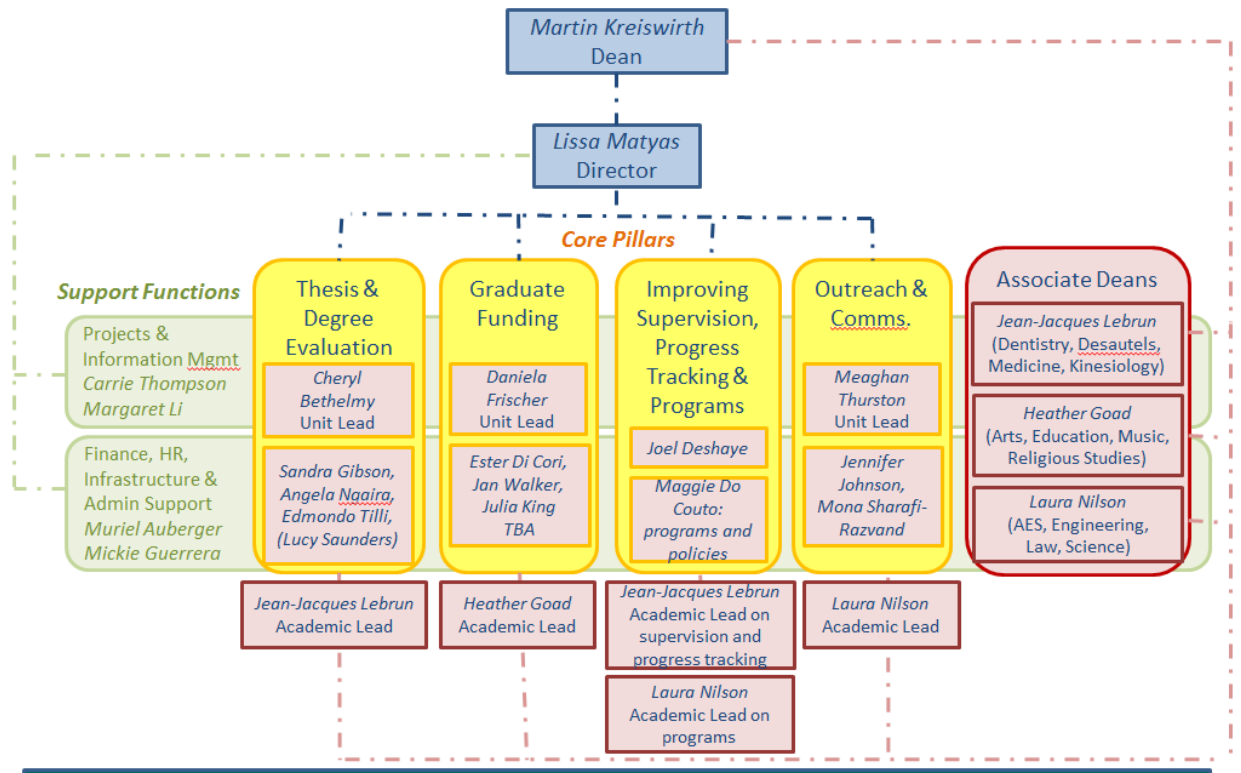


NOTES:

GPS Operating Model: Objective

- Create efficient and effective unit for academic and administrative co-operation and support to achieve common goals in improving graduate education and postdoctoral training at McGill
 - Provide tools, facilitation, information, and support to academic and administrative units
 - Formerly 35 staff > 12 transferred> reduced 6 staff = **17** current staff
- Partner with units to help develop and deliver university-wide
 - Academic quality assurance, regulations, procedures, problem-solving and conflict resolution for graduate education and research
 - SRI and strategic planning objectives
 - Overall enhancements and improvements for students, supervisors, and units (paperless, etc.)
- Support project-based model of operation

GPS Operating Model



Integrated and reorganized to provide information, data and regulatory support for SRI projects, specifically:

- Increase competitive funding
 - Maintain focus on
 - increasing resources leveraged towards growth and increased yield
 - Faculty-controlled distribution of student support
 - Work to customize funding distribution for each Faculty
 - To find most effective use of student support to meet enrolment objectives
 - Provide detailed student funding information for units

- Maximize quality enrolment
 - uApply graduate admissions system launched August 15 – to support efficient admissions decision-making (turnaround from application to offer) and yield
 - Support academic units in the creation of new or modified programs (including new structures such as joint-degrees and co-tutelle) that aid in attracting new applicants and improved recruitment for current supervisors
 - Support the determination and leveraging of enrolment capacity
 - Basic information on dashboard (i.e. enrolment data)?
 - New comparative data monitoring applications & admissions
 - New comprehensive supervisory workload data
 - University-wide recruitment
- Improve times to completion
 - Implement “Milestones” project for improved monitoring student progress and program design
 - Stage 1: work with units to review programs (18 completed)
 - Focusing on program delivery to determine and ensure efficient milestones leading towards timely completion for each unit
 - Stage 2: make monitoring process automatic in order to facilitate feedback and progress for the units
- Improving Supervision
 - University “Health Scan” – collaboration with PGSS, MAUT, and academic and administrative units
 - Canada wide survey on graduate student experience
 - More specific and original survey of supervisors and supervisees
 - Analysis of survey data by partners and Supervisory Working Group
 - Led to recommendations on the supervisor-supervisee relationship to go forward
 - New, innovative supervisory website – launched last week
 - Includes important Q&As from students and faculty
 - Improved and extended workshops
- Improve overall graduate student experience:
 - More efficient , quicker thesis and degree evaluation
 - Facilitating significantly-improved processes for students and times to examinations
 - Introduce electronic initial submission – Sept. 16th
 - Improved graduate student experience
 - Continuing to enhance SKILLSETS
 - Ongoing PhD Tracking – Career Outcome Survey
 - Initiating GRAPHOS – writing support for graduate students and postdocs
 - Outreach and communication
 - Working with Faculties, Administration and PGSS in enhancing graduate community identity
 - Sharing central recruitment tools and support including most trafficked website on McGill portal- the “Future Graduate Students” website etc.