



# WHAT CAN I DO WITH MY STUDIES IN...?

BACHELOR OF ARTS,  
POPULATION AND GLOBAL HEALTH



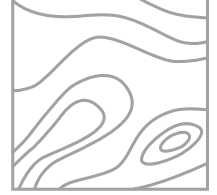
## PROGRAM HIGHLIGHTS

- Interdisciplinary program combining **public health**, **global health**, and **social sciences**
- Community-engaged projects and internships

Preparation for careers in **public health**, **policy**, and **international development!**

*Start exploring your career in **Global Health** today and see what kind of jobs **your BA** can lead you to!*





## CORE COMPETENCIES

### **POSITIONALITY AND EQUITABLE PARTNERSHIPS**

I understand how power, privilege, and social justice shape experiences and relationships. I practice continuous self-awareness when working with different teams, cultures, contexts, and worldviews to build equitable and respectful partnerships.

### **INTERDISCIPLINARY PROBLEM SOLVING**

I can approach complex population and global health challenges through interdisciplinary collaboration. I use systems thinking, ethical reasoning, and a determinants-of-health lens to find thoughtful and practical solutions.

### **ORIGINS OF SYSTEMIC INEQUITIES**

I can explain how historical and present-day political and economic forces—like colonialism, neoliberalism, protectionism, nationalism, populism, and authoritarianism—continue to shape global health policy, research, and practice.

### **RESEARCH LITERACY**

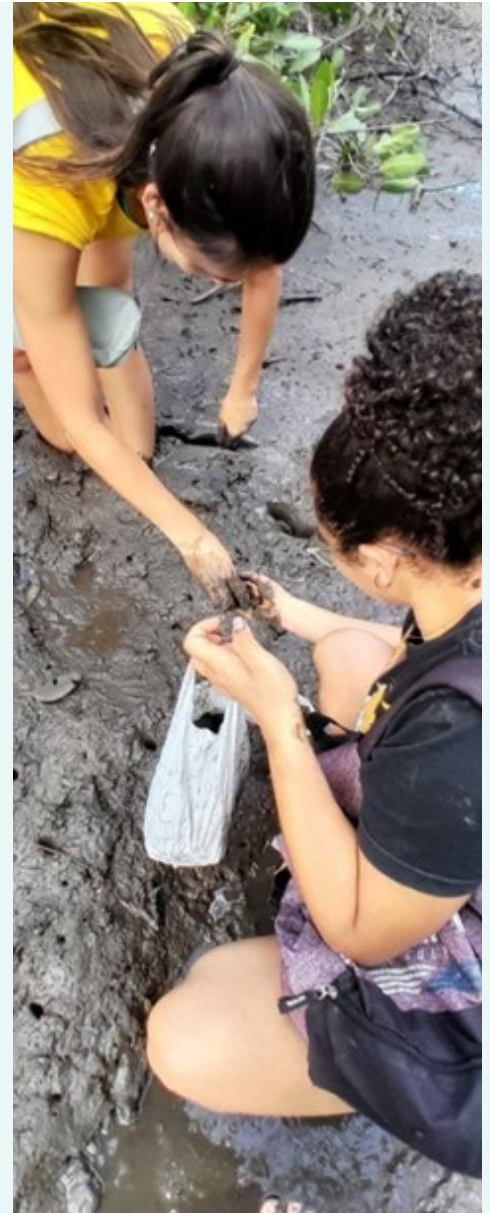
I understand the basics of quantitative and qualitative research and know how to use data and evidence to support decisions and solutions in population and global health.

### **ETHICAL FOUNDATIONS/Frameworks**

I can apply ethical frameworks in ways that are culturally sensitive and responsive to the needs of communities and organizations. I value collaboration, respect, and integrity in all my work.

### **KNOWLEDGE MOBILIZATION AND TRANSLATION**

I can critically assess global health information and share it effectively with different audiences using visuals, storytelling, and other communication tools to make ideas clear, accessible, and meaningful.





# STREAM 1

## ENVIRONMENT AND HEALTH

Focuses on human-environmental relationships and the health impacts of factors such as climate change, pandemics, pollution, and occupational hazards.

### GRADUATES MAY PURSUE

- Environmental Protection Agencies
- Public Health Departments
- Climate Change and Disaster Response Organizations
- Occupational Health and Safety Authorities
- International Aid Organizations
- Further Academic or Professional Studies
  - For example, Master's in Global Health, Master's in Public Health
  - Further training in medicine\* (additional STEM courses required)

### JOB TITLES

- Environmental Health Analyst
- Climate and Health Specialist
- Occupational Health and Safety Officer
- Emergency Preparedness Coordinator
- Air Quality Specialist

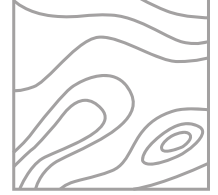
### EMPLOYERS/ORGANIZATIONS

- Environment and Climate Change Canada
- World Health Organization (WHO)
- Public Health Agency of Canada
- International Federation of Red Cross and Red Crescent Societies

### FURTHER EDUCATION

- Health Professional Training
- Social Work
- Epidemiology and Biostatistics
- Environmental and Planetary Health
- Psychology and Anthropology





# STREAM 2 CULTURE, SOCIETY, AND HEALTH

Explores how culture, tradition, religion, gender, history, and social structures affect health outcomes.

### GRADUATES MAY PURSUE

- Community Health Organizations
- Social Services and Advocacy Groups
- Cultural and Heritage Organizations
- Immigration and Refugee Services
- Human Rights Organizations
- Further Academic or Professional Studies
  - For example, Master’s in Global Health, Master’s in Public Health
  - Further training in medicine\* (additional STEM courses required)

### JOB TITLES

- Health Equity Coordinator
- Community Outreach Specialist
- Indigenous Health Advocate
- Social and Behavioral Health Specialist
- Program Manager (Community Health)

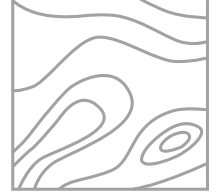
### EMPLOYERS/ORGANIZATIONS

- Canadian Red Cross
- Oxfam Canada
- Institut National de Santé Publique du Québec
- Centre Intégré Universitaire de Santé et de Services Sociaux

### FURTHER EDUCATION

- Health Professional Training
- Social Work
- Epidemiology and Biostatistics
- Environmental and Planetary Health
- Psychology and Anthropology





# STREAM 3

## DIET, LIFESTYLE, AND LIFE COURSE

Examines how diet, exercise, and lifestyle factors impact health throughout different stages of life.

### GRADUATES MAY PURSUE

- Public Health Nutrition Programs
- Wellness and Fitness Centres
- Chronic Disease Prevention Organizations
- Maternal and Child Health Services
- Aging and Senior Services
- Further Academic and Professional Studies
  - For example, Master’s in Global Health, Master’s in Public Health
  - Further training in medicine\* (additional STEM courses required)

### JOB TITLES

- Nutrition and Wellness Consultant
- Chronic Disease Prevention Specialist
- Maternal and Child Health Coordinator
- Aging and Health Policy Advisor
- Lifestyle Intervention Specialist

### EMPLOYERS/ORGANIZATIONS

- Health Canada
- YMCA Health and Wellness Programs
- Heart and Stroke Foundation of Canada
- Diabetes Canada
- Community Food Centres Canada

### FURTHER EDUCATION

- Health Professional Training
- Social Work
- Epidemiology and Biostatistics
- Environmental and Planetary Health
- Psychology and Anthropology





# STREAM 4

## SYSTEMS, POLICY, AND GOVERNMENT

Focuses on health policy, governance, and global health systems with attention to issues like neo-colonialism and globalization.

### GRADUATES MAY PURSUE

- Government Health Agencies
- Health Policy Think Tanks
- Public Policy Firms
- International Aid Organizations
- Advocacy and Lobbying Groups
- Further Academic and Professional Studies
  - For example, Master’s in Global Health, Master’s in Public Health
  - Further training in medicine\* (additional STEM courses required)

### JOB TITLES

- Global Health Policy Analyst
- Health Systems Manager
- International Health Consultant
- Humanitarian Health Officer
- Government Affairs Specialist

### EMPLOYERS/ORGANIZATIONS

- Global Affairs Canada
- Pan American Health Organization (PAHO)
- Canadian Institute for Health Information
- United Nations Development Programme (UNDP)
- International Development Research Centre (IDRC)

### FURTHER EDUCATION

- Health Professional Training
- Social Work
- Epidemiology and Biostatistics
- Environmental and Planetary Health
- Psychology and Anthropology





# STREAM 5 INNOVATION AND LEADERSHIP

Develops skills in health innovation, sustainability, leadership, and social entrepreneurship.

### GRADUATES MAY PURSUE

- Health Technology Start-Ups
- Social Innovation Hubs
- International Development Organizations
- Behavioural Research Centers
- Nonprofit Organizations
- Further Academic and Professional Studies
  - For example, Master’s in Global Health, Master’s in Public Health
  - Further training in medicine\* (additional STEM courses required)

### JOB TITLES

- Health Innovation Strategist
- Social Impact Consultant
- Start-up Founder (Health Sector)
- Behavioural Economics Consultant
- Design Thinking Facilitator

### EMPLOYERS/ORGANIZATIONS

- MaRS Discovery District
- Centre for Addiction and Mental Health (CAMH)
- UNICEF Innovation Labs
- Ashoka Canada
- Centre for Social Innovation (Canada)

### FURTHER EDUCATION

- Health Professional Training
- Social Work
- Epidemiology and Biostatistics
- Environmental and Planetary Health
- Psychology and Anthropology





# BACHELOR OF ARTS IN POPULATION AND GLOBAL HEALTH

Build a Healthier and More  
Equitable World, Locally and  
Globally.

*Construisez un monde plus sain et  
plus équitable, à l'échelle locale et  
mondiale.*

## FOR MORE INFORMATION

✉ Enoch Leung  
studentaffairsofficer.dgph@mcgill.ca

📷 @mcgill\_globalpublichealth

📘 McGill Department of Global and Public Health

🌐 [mcgill.ca/global-public-health](http://mcgill.ca/global-public-health)

