
Land Acknowledgement

McGill University is on land which has long served as a site of meeting and exchange amongst Indigenous peoples, including the Haudenosaunee and Anishinabeg nations. We acknowledge and thank the diverse Indigenous peoples whose presence marks this territory on which peoples of the world now gather.

www.native-land.ca



An aerial photograph of Montreal, Quebec, Canada, showing a dense urban landscape with numerous skyscrapers and older buildings. In the foreground, a large green lawn is visible, surrounded by trees with autumn foliage. A white rectangular text box is overlaid on the left side of the image, containing the event title and dates. A red horizontal line is positioned above the text box.

Intro to Grad Studies

17 & 19 May, 2023



Student Services
Services aux étudiants

Today's Presenter

Christopher Stephens

Student Life Associate,

Campus Life & Engagement

(and a former McGill grad student!)





What is Campus Life and Engagement?

A go-to hub to help students discover and explore opportunities at McGill to learn, grow and succeed.

Through our programming, resources, and activities, we:

- ❖ **Facilitate** new and returning students' integration into the McGill community
- ❖ **Support** students' University academic and personal development
- ❖ **Promote** and **encourage** co-curricular involvement
- ❖ **Connect** students to and engage them in opportunities that develop their capacity to make positive change on campus and in their communities.



Contact us:

[Get Ready!](#)

firstyear@mcgill.ca



Connect with your peers:

[Graduate Entering Class FB Group](#)



[Graduate Entering Class Discord](#)



Student Services
Services aux étudiants



Campus Life & Engagement, Continued

Campus Life & Engagement offers:

For **NEW** Grad Students:

- ❖ [Summer Pre-Arrival Webinars](#)
- ❖ [New Student Mentors \(for Canadian Students\)](#)
- ❖ Private communities for new grad students (Facebook & Discord)
- ❖ [Graduate Orientation! \(August 21 to 28\)](#)
- ❖ Available via walk-in, phone, email, or 1-on-1 appoints to help answer your questions

For **ALL** Grad Students:

- ❖ FREE peer-led [language workshops](#)
- ❖ Volunteering opportunities on-campus and out in the community
- ❖ Mentoring opportunities
- ❖ Available via walk-in, phone, email, or 1-on-1 appoints to help answer your questions



Today's Topics:

- ❖ Academic Policies & Information
- ❖ Graduate-Specific Resources & Services
- ❖ Health & Wellness for Grads
- ❖ Graduate Finances
- ❖ The Graduate Community



Academics

Course Load & Degree Time

	Masters Programs	Ph.D. Programs
Course Load *	<ul style="list-style-type: none">• 4-5 courses (12-15 credits) per semester• 45-48 credits total	<ul style="list-style-type: none">• Program Specific
Degree Time Limit *	<ul style="list-style-type: none">• 3 years, full-time• 5 years, part-time	<ul style="list-style-type: none">• 7 years, or;• 6 years, if entering directly from an MA

*Requirements vary by Faculty/Program (**sometimes greatly**). You will need to refer to your department and program for specific details.

*International students **must** be enrolled in full-time studies



McGill Username(s), Email

❖ Your McGill username (and McGill email address):

❖ *firstname.lastname@mail.mcgill.ca*

❖ Campus Wireless, VPN, Email, [Minerva](#), [myCourses](#), campus printing, [free software](#), public workstations... everything!

❖ Your McGill Email = accessible through Outlook (browser-based, mobile, and/or desktop app)

❖ Visit the [IT Services Knowledge Base](#) for setting up your email!



Minerva & myCourses

Minerva

- ❖ Your student records
- ❖ Course registration
- ❖ Financial information

myCourses

- ❖ Course syllabus & readings
- ❖ Assignment submissions
- ❖ Online quizzes
- ❖ Discussion boards
- ❖ GradLife Orientation (GLO)

❖ Academic Integrity Tutorial

❖ GLO Supervision Module

❖ It Takes All of Us

These are mandatory tutorials



GradLife Orientation

Access GradLife Orientation (GLO) on [myCourses](#) to:

- ❖ See the welcome message from the Dean of Graduate and Postdoctoral Studies
- ❖ Fun videos and quick primers on important aspects of your graduate experience, such as:
 - ❖ Finances & Funding
 - ❖ Health & Wellness
 - ❖ The Graduate Community
 - ❖ And more!



Mandatory Tutorials

Academic Integrity Tutorial

- ❖ Mandatory for all students
- ❖ Accessed through [Minerva](#) -> Student Menu

It Takes All of Us

- ❖ Mandatory for all students
- ❖ Building a safer campus
- ❖ Building an awareness of sexual violence
- ❖ Accessed through [myCourses](#)
- ❖ Takes approximately 40 minutes to complete

Remember!
Complete the Academic Integrity Tutorial and It Takes All of Us by the end of your **first semester**



Mandatory Tutorials Continued

Supervision Tutorial

- ❖ Mandatory for everyone in a **PhD** program or a **Masters thesis** program
- ❖ Critical information on the Supervisory relationship, including the mandatory “Letter of Understanding”
- ❖ Accessed through [myCourses](#)

Remember!

Complete the **Academic Integrity Tutorial, It Takes All of Us**, and the **Supervision Tutorial** (if applicable) by the end of your **first semester**



Course Registration: Fall 2023

- **Course Registration**
- Accessed through [Minerva](#) -> Student Menu -> Registration Menu

- **Registration Dates:**
- ❖ July 4th – Registration opens at 9:00 AM
- ❖ August 14th 2023 – Register for **at least one class** by this date to avoid the late registration fee
- ❖ August 15th to September 12th – add/drop period (late registration fee applies if you have not **already registered** for at least one class).
- ❖ September 19th – deadline to withdraw from courses **with** a refund.
- ❖ October 24th – deadline to withdraw from courses **without** a refund.



Course Registration Continued

Fall and Winter Terms

- ❖ Registration opens for Fall 2023 and Winter **2024 at the same time**
- ❖ Begin by registering for the registration confirmation course **REGN RCGR** for Fall 2023 (**CRN 179**) and Winter 2024 (**CRN 190**)
- ❖ You must register continuously for every term during your program, **unless you request a leave of absence**

Graduate registration dates and other important registration information is helpfully compiled on the [Graduate and Postdoctoral Studies website](#).



Course Registration: Help!?

Need Help with Registration?

- ❖ Start by visiting the Graduate & Postdoctoral Studies [How to Register](#) webpage
- ❖ Difficulties with the registration process? Contact [Service Point](#)
- ❖ Have questions about **your** specific course requirements? Contact your GPC!

(Who is your GPC?!)



Your Contacts: GPCs and GPDs

Graduate Program Coordinator (GPC):

Contact them regarding:

- ❖ Program requirements and regulations
- ❖ Fellowships
- ❖ Course inquiries

Find your specific GPC and/or GPD [here](#)

Graduate Program Director (GPD):

Manages the graduate program as a whole. Contact them regarding:

- ❖ Mediating your relationship with your supervisor



Graduate Regulations

- ❖ [E-calendar](#)
 - ❖ Access the grad policies and regulations at McGill
- ❖ [Office of the Dean of Students](#)
 - ❖ Student rights and responsibilities
 - ❖ Code of conduct and disciplinary procedures
- ❖ [Handbook on Student Rights and Responsibilities](#)
- ❖ [Graduate and Postdoctoral Studies Contacts](#)



Graduate Supervision

Supervision is for:

- ❖ All Ph.D. Students
- ❖ Masters Students in a thesis program

Being matched with a supervisor:

- ❖ Often occurs during your application process...
- ❖ ...But the process and timing **varies by program**, so check your program's website and contact you [Graduate Program Coordinator](#) for specifics



Supervision – Your First Meeting

At your first meeting, discuss the expectations you have of one another. These expectations are then written down in a “**Letter of Understanding.**”

Common topics included are:

- ❖ Frequency of supervisory meetings
- ❖ Your feedback expectations
- ❖ Your Supervisors expectations of written work
- ❖ Your funding
- ❖ Your research responsibilities
- ❖ Authorship policies

For more information, go to the [GPS Supervision](#) website



Supervision Tips

Some tips for working well with your supervisor:

- ❖ Clearly communicate your expectations
 - ❖ Document them on the [“Letter of Understanding”](#)!
- ❖ Understand and follow McGill’s [supervision policies](#)
- ❖ Learn how to “manage” your supervisor
- ❖ For more check out Grad Supervision resources [here](#)
- ❖ For more practical advice, don’t miss our [Getting Started with Supervision](#) webinar on **June 16!**

Supervision – Conflict Resolution

Addressing conflicts with your supervisor:

1. Attempt to understand the conflict

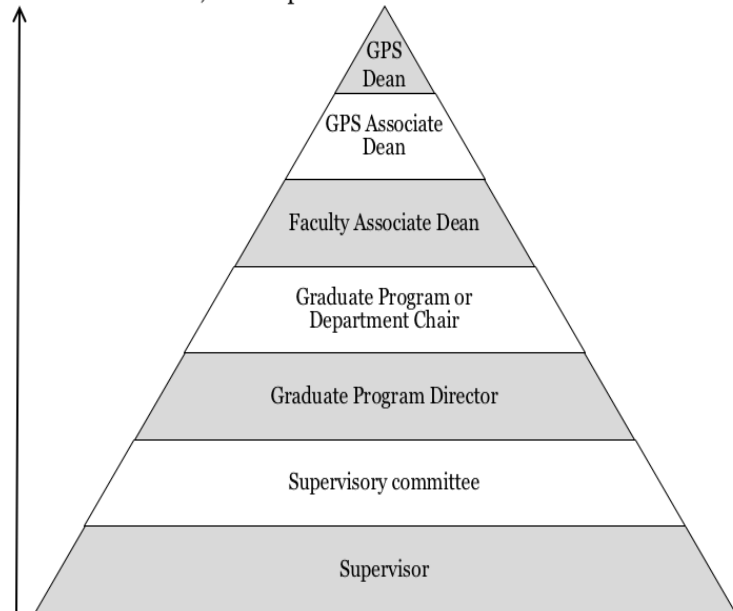
- Is it personal? Cultural?

2. Speak with your supervisor

- Could they be unaware?

Escalate if necessary

If concern is not resolved, move up



First contact

Hierarchy of Help



Student Services
Services aux étudiants



Graduate Resources



Graduate & Postdoctoral Studies (GPS)

Leadership of graduate teaching, supervision, and research for over 400 graduate programs

- ❖ Funding information & opportunities
- ❖ Thesis guidelines – from preparation to submission
- ❖ Supervision regulations & best practices
- ❖ Create your Individual Development Plan, set goals (academic, personal, and career), and track your progress through [myPath!](#)
 - ❖ Creating an IDP is **mandatory** for all students enrolled in doctoral programs, as well as those enrolled in Masters: Non-Thesis programs.



Teaching & Learning Services (TLS) and SKILLSETS

Graduate-specific skills development to compliment your research training

Workshops, training, and resources for:

- ❖ Teaching
- ❖ Leading projects
- ❖ Improving communication
- ❖ Collaborating well
- ❖ Time management
- ❖ Business skills



Career Planning Service (CaPS)

Support for all aspects of your job and career search

Workshops, 1-on-1 advising, mentorship, and resources such as:

- ❖ Professional networking
- ❖ Career Prospects
- ❖ Interview, CV & LinkedIn advice
- ❖ Alumni mentorship
- ❖ Graduate Career Advisors
- ❖ Job listings through [myFuture](#)



Graphos

McGill's Graduate Writing Centre

- ❖ Improve your scholarly communication skills
- ❖ Media-specific workshops
- ❖ Tutorial service
- ❖ Dedicated writing groups & seminars
- ❖ 1-credit courses
- ❖ Additional options for non-native English speakers



Student Accessibility & Achievement

Helps students all students achieve their academic goals and overcome barriers, with additional accommodations available for students with documented disabilities

- ❖ Accessibility consultations
- ❖ Access technologies
- ❖ Note-taking support
- ❖ Peer support
- ❖ Academic accommodations
- ❖ Learner supports
- ❖ Tutorial Services



International Student Services (ISS)

Dedicated support for all international students

- ❖ Various international supports and services, including:
- ❖ [Pre-Arrival webinars](#)
- ❖ [The International Buddy Program](#)
- ❖ Information on immigration, work permits, etc.
- ❖ Management of the International Health Insurance Plan



McGill Library

Provides more than just access to the library collections

- ❖ Inter-library Loans
- ❖ Criterion on Demand & Kanopy
- ❖ Scanning Service
- ❖ Dedicated graduate study spaces & group study rooms
- ❖ Citation software
- ❖ Research Workshops & research data service
- ❖ Access to librarians in-person or via chat, email, text, phone
- ❖ [Liaison Librarians](#)

A photograph of a modern, multi-story building with a prominent glass tower. The building is constructed of dark grey brick and features several windows. To the left, there are trees with bright yellow autumn leaves. In the foreground, there are stone steps leading up to the building, and several bicycles are parked in a rack. The sky is blue with some clouds. A white text box is overlaid on the right side of the image.

Health & Wellness



Graduate Health Insurance

There are two health insurance plans for graduate students

- ❖ **Canadian Students**: If you are full-time, you are automatically enrolled in the Post-Graduate Students' Society (PGSS) Health & Dental Plan.
- ❖ **International Students**: You are automatically enrolled in the **mandatory** McGill International Health Insurance Plan. You may also opt in to the PGSS Dental coverage.
 - ❖ (Some exemptions ARE possible in specific circumstances.)
- ❖ PGSS also provides additional **Health Resources** to all graduate students.



Student Wellness Hub

On-campus access to services and resources to support your physical, mental, and emotional health

- ❖ Appointments with doctors, nurses, counselors, clinicians, and more
- ❖ Graduate Local Wellness Advisor: [Devon Simpson](#)
- ❖ A huge array of [Wellness Programming](#)
- ❖ [Virtual/telehealth options](#)
- ❖ [Accessing off-campus health services](#)

Don't miss the upcoming **Grad Health 101** (June 20th) and **Accessing Healthcare in Montreal** (June 27th) webinars!



Athletics & Recreation

Recreational resources to help you stay healthy, meet people, and have fun

- ❖ Facilities at both the Downtown and Macdonald Campuses
- ❖ Free access to the pool, courts, intermural activities
- ❖ Ability to purchase memberships to classes, weight rooms, pods



McGill Office of Religious and Spiritual Life (MORSL)

Provides multifaith resources and programming for the religious and spiritual well-being of students

- ❖ Live meditation and yoga sessions
- ❖ Prayer and meditation spaces
- ❖ Self-directed resources
- ❖ [Multifaith & Peer Faith volunteers](#)
- ❖ Assistance in [connecting with your faith community](#)
- ❖ [Workshops, guest speakers, community events](#)

Additional Offices & Services

Provided by McGill:

- ❖ [OSVRSE](#) – The Office for Sexual Violence Response, Support, and Education
- ❖ [Students Helping Students](#) - McGill's directory of peer support and mentorship programs

Provided by student groups:

- ❖ [SACOMSS](#) – The Sexual Assault Centre of the McGill Students' Society
- ❖ [Midnight Kitchen](#) – A student group supporting food accessibility
- ❖ [Legal Information Clinic at McGill](#)

Find more [Clubs, Services, and Independent Student Groups](#)

An aerial photograph of a university campus during autumn. The scene is dominated by trees with vibrant yellow, orange, and red foliage. Several large, multi-story brick buildings are scattered throughout the campus. A winding road or path cuts through the green spaces. In the foreground, a large body of water, likely a lake or reservoir, reflects the sky. The overall atmosphere is serene and scenic.

Graduate Finances



Graduate Funding: Internal Funding

Funding provided by from McGill itself

- ❖ Distributed by McGill as part of your funding package.
- ❖ May include assistantships (teaching, research) and/or stipends (fellowships)
- ❖ Personalized **to you**

For more information, [contact your department or Graduate Program Director.](#)



Graduate Funding: External

Funding from outside McGill

- ❖ Grants, awards, or fellowships administered by the federal or provincial government or other external agencies.
- ❖ Options for both Canadian and International students
- ❖ **You are responsible** for applying for external funding (but your department can help!)

For more information, contact [your department](#) or visit the [GPS funding](#) page.



Graduate Funding: External Continued

- ❖ 6 Major sources of external funding are open to graduate students studying in Quebec:
 - ❖ For Humanities & Social Sciences: the [Social Sciences and Humanities Research Council](#) and the [Fonds de recherche du Québec - Société et culture](#)
 - ❖ For Sciences and Technology: the [Natural Sciences and Engineering Research Council](#) and the [Fonds de recherche du Québec – Nature et technologies](#)
 - ❖ For Medicine and Health Sciences: the [Canadian Institute of Health Research](#) and the [Fonds de recherche du Québec – Santé](#)

Which opportunities apply to International students? Visit the [International Students Funding](#) page.



McGill Scholarships & Student Aid Office

Resources and advice to help you pay for your studies and make the most of your budget

- ❖ [Information and help with government aid documentation](#)
- ❖ Merit-based & need-based financial support programs
- ❖ Scholarships, bursaries, emergency loans
- ❖ Funding for [specific groups/events](#)
- ❖ [Work Study Program](#)
- ❖ [Frugal Scholar Program](#)



Graduate Community



Connecting with the Community

A students' involvement in the campus community are linked to:

- ❖ Improved academic achievement
- ❖ Development of practical skills
- ❖ Greater wellbeing & sense of fulfilment
- ❖ Higher degree completion rate
- ❖ Expanded networking, career, and research opportunities

Interested in learning more about the **practical benefits** of getting involved, sign up for the [Getting Involved as Grads](#) webinar (**August 1st or 4th**)!



Graduate Entering Class Facebook Group

- ❖ Private group for first-year graduate students
- ❖ Between 1/3 to 1/2 of new grad students join each year
- ❖ Building the McGill graduate community
- ❖ Meet new friends, future research collaborators (or pet-sitters or roommates...)
- ❖ Hear about upcoming events or projects that are especially useful for new grad students
- ❖ Ask your questions of other students & CL&E staff
- ❖ Best place to connect with other new and incoming grad students



Graduate Entering Class Discord

- ❖ Private group for first-year graduate students
- ❖ Something completely new!
- ❖ Use it for the same reasons you might use the FB Group – connect, get answers, hear about upcoming events for new grad students!



Student Government: Post-Graduate Students' Society (PGSS)

Representing *all* graduate students & post-doctoral fellows at McGill

- ❖ Oversee the department-level graduate student associations
- ❖ Provide numerous services (including health insurance)
- ❖ Events all year round – including lots of events for new students during & right after Orientation
- ❖ French language classes & language cafes
- ❖ Get involved in the PGSS committees, commissions, council & more
- ❖ [Thomson House](#)

Also find PGSS on [Facebook](#), [Instagram](#)



Macdonald Campus Graduate Students' Society (MCGSS)

Representing graduate students at McGill's Macdonald Campus

- ❖ Provides services and resources specifically for grad students at Mac
 - ❖ *In addition* to those provided by PGSS
- ❖ Events specifically for grad students at Mac
- ❖ Get involved in the MCGSS council

Also find MCGSS on [Facebook](#), [Instagram](#)



Post-Graduate Students Associations (PGSAs)

Department-level graduate student associations

- ❖ The groups directly representing you & your classmates
- ❖ Represents you to your department
- ❖ Organize social & academic events
- ❖ Provide specialized support (mentorship programs, grant writing support...)
- ❖ **Your PGSA is likely to be the most impactful group on your life at McGill!**



Finding Your Community

Connect with communities dedicated to supporting and celebrating specific populations

- ❖ [First Peoples' House](#) – Community and support for Indigenous students
- ❖ [1st - Up](#) - First Generation Student Support
- ❖ Check out SSMU's [Clubs, Services, and Independent Student Groups](#) for
 - ❖ Societies for racialized students
 - ❖ Societies based on specific languages, religions, cultures
 - ❖ [Queer McGill](#)
 - ❖ Over 250 Clubs, Services, and Independent Student Groups!



Wrapping Up



Graduate Orientation!

Graduate Orientation 2023 is from August 21st to 28th, and all graduate students are encouraged to attend!

- ❖ In-person & on-campus
- ❖ 3 days of workshops and panels on a wide range of topics (Aug. 21st to 23rd)
- ❖ Graduate Services Fair and Welcome Reception (Aug. 24th)
 - ❖ Enjoy refreshments, mingle, network & speak 1-on-1 with service reps
- ❖ Grads Connect – Grad Orientation’s big social event (Aug. 28th)

Registration opens late July / early of August!



Where to Get Advice & Answers

There are a lot of avenues for getting answers to the questions you may have! Some we suggest are:

- ❖ Your [Graduate Program Coordinator](#)
 - ❖ For questions about program specific details.
- ❖ The [New Student Mentorship Program](#) (Canadian students) or the [International Buddy Program](#) (International students)
 - ❖ To be matched with an upper-year graduate student
- ❖ [Graduate Entering Class Facebook Group](#)
 - ❖ To connect with other grad students, and have your questions answered by them and/or by CL&E staff
- ❖ [GradHub](#)
 - ❖ To find general information useful to incoming graduate students
- ❖ [Students Helping Students](#)
 - ❖ McGill's directory of peer-support and mentorship programs
- ❖ [Campus Life & Engagement](#)
 - ❖ You can contact us at any time. We either know the answer, or know who to put you in contact with

THANK YOU!

Time for the Q&A!



McGill

Student Services
Services aux étudiants