

# The Spatial and Social Inequities of Urban Transportation-Related Health Pathways in Montréal

Fiona M. McClave

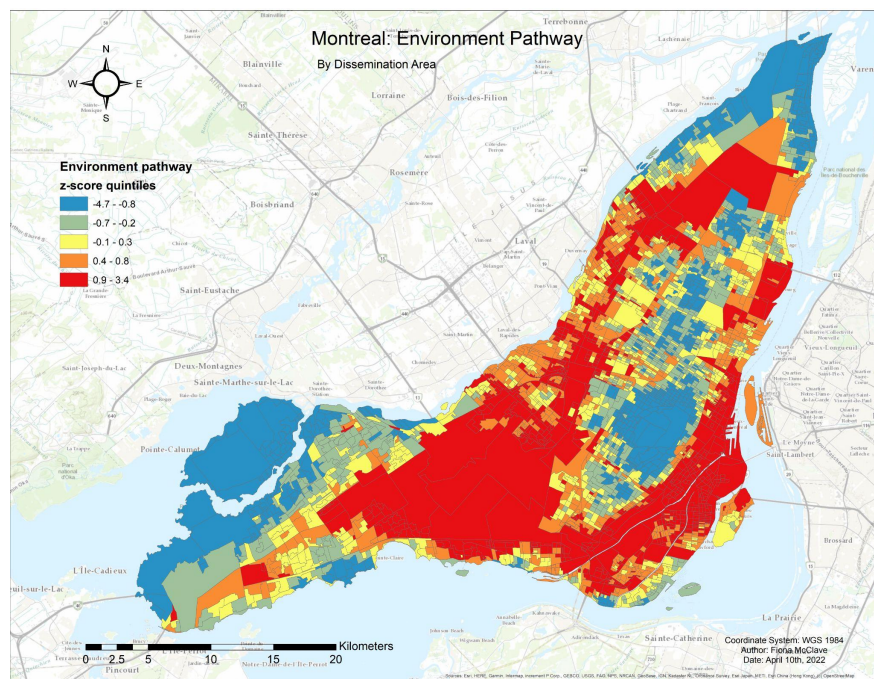
Department of Geography, McGill University, Montréal (Québec) Canada, 2022

Supervisor: Prof. Kevin Manaugh, McGill University

Reader: Prof. Mylene Riva, McGill University

The causal linkage between transportation and health has entered the realm of popular discourse. Transportation can be a mitigating or exacerbating component of the urban system on public health, with the potential to create health inequalities for already vulnerable urban sub-populations. Using a holistic framework outlined by Widener and Hatzopoulou (2016), I create four distinct pathways in which transportation has the power to affect urban health. By indexing relevant indicators for each pathway and employing hotspot analysis as well as descriptive statistics, this study examines the spatial and social patterns of transportation-related health within the city of Montreal. I find a contrast with the center of the Island and the East and West extremities for all pathways, with either health promoting or health undermining features concentrating around the downtown core depending. Significant differences concerning transportation-related health exist for visible minority, Black, and immigrant populations. These results should urge planners to rethink how transportation policy inequitably affects urban minorities' health.

**Keywords:** urban transportation, health outcomes, transport equity, Montreal, hotspot analysis



Choropleth Map of Environment Pathway z-score index (Designed by Author, 2022)