



McGill

Department of Geography

Undergraduate Student Orientation

 Tuesday August 26th 2025

 11:00am to 12:30pm

 Burnside Hall, room 306



An info session to help you
get your bearings and start
your undergraduate studies
on a good foot!

Land Acknowledgement

McGill University's downtown campus is located on land which has long served as a site of meeting and exchange amongst Indigenous peoples, including the **Haudenosaunee** and **Anishinaabeg** nations. We acknowledge, respect and thank the diverse First Peoples whose footsteps have marked and whose presence continues to impact and define this territory on which peoples of the world now gather.

- Montreal, also known as **Tiohtiá:ke** (where the people split or parted ways, where the currents divide/unite), is the unceded territory of the **Kanien'kehá:ka** (people of the flint) who are one of the six Nations of the [Haudenosaunee Confederacy](#) (people of the longhouse).
- The **Anishinaabeg** also have historical ties to the area and know this land as **Mooneyang**.
- Learn more about Indigenous lands upon which McGill University campuses and research stations are located, as well as its First Peoples on [McGill's Indigenous Initiatives website](#).



Outline



Introductions:

Department Chair
Program Directors



Introductions:

Department Advisor
Advising services



Spaces & resources:

Departmental spaces
Geographic Information
Center (GIC)



Spaces & resources:

Library spaces &
resources
Liaison Librarian services



Other relevant services & opportunities:

Student Services
Summer Research
Awards
Internships
Field Study Semesters



Student Associations:

McGill Undergraduate
Geography Society
(MUGS)
Student Association of
Sustainability, Science
and Society (SASSS)

Introductions

I co-teach
GEOG 216 *Geography of
the World Economy* and
teach **GEOG 311**
Economic Geography!

Department Chair

Professor Sebastien Breau
sebastien.breau@mcgill.ca

Burnside Hall, room 417



Introductions

I co-teach **GEOG 217**
Cities in the Modern World and
teach **GEOG 325** *New Master-
Planned Cities*, **GEOG 425**
*Southeast Asia Urban Field
studies*, and **GEOG 475**
*Contested Cities and Urban
Activism!*

Geography Undergraduate Affairs Committee Chair

Professor Sarah Moser
sarah.moser@mcgill.ca
Burnside Hall, room 413



Introductions

I teach
GEOG 360 *Analyzing
Sustainability* and co-teach
GEOG 290 *Local
Geographical Excursion* and
GEOG 398 *Field Studies in
Human Geography!*

Sustainability, Science & Society Program Director

Professor Brian Robinson

brian.e.robinson@mcgill.ca

Burnside Hall, room 432



Introductions

I teach **GEOG 315**
Transportation Geography
and **GEOG 494** *Urban*
Field Studies!

Urban Studies Program Director

Professor Kevin Manaugh
kevin.manaugh@mcgill.ca
Burnside Hall, room 424A



Introductions

I completed both
my undergraduate
and graduate
degrees at McGill!

Geography Undergraduate Program Advisor

Michelle Maillet (MA Geography)

advisor.geog@mcgill.ca

michelle.maillet@mcgill.ca

Burnside Hall, room 322



Departmental Advising Services

If you have questions about your program requirements, opportunities available to you as a Geography, Sustainability or Urban studies student, or need help with course registration, **reach out to Michelle as your primary point of contact!**

Michelle is available to support students via **email** (see introduction slide), **regular in-person drop-in office hours** and **virtual appointments**.

Drop-in office hours:

Mondays and Wednesdays
from 1pm to 4pm

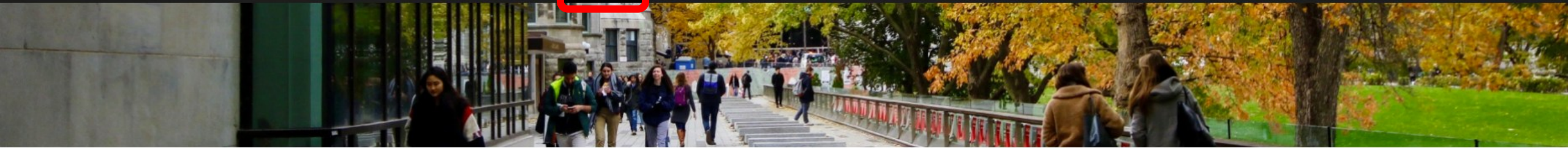
Geography Advising Office:

Burnside Hall, room 322

Virtual appointments*:

*Virtual meetings are held on [Microsoft Teams](#). Download the app in advance and login with your McGill email and password. A **link to the booking system** can be found in Michelle's email signature as well as the Geography Advising Office website!





McGill.CA / DEPARTMENT OF GEOGRAPHY / Undergraduate

Undergraduate Programs

Advising

Honours

Honours Abstract 2025

Honours Abstract Archive


Geography Undergraduate
Research Awards (GURA) for
students of Black Heritage,
2025

Geography Undergraduate Advising Office

Undergraduate Advisor

[Michelle Maillet](#), the Department's **Undergraduate Advisor**, can help you plan your degree. She is available to answer your questions **by email, by virtual appointment, or in-person office hours.**

Michelle is responsible for all undergraduate programs that fall under the Department of Geography (including majors, minors, honours, joint honours, and Interfaculty programs). She holds a wealth of knowledge about navigating the McGill bureaucracy and can help you be strategic with your undergraduate studies. Do not hesitate to contact her for any Geography-related or general questions that you may have. If she is not the right person to answer your question, she can connect you with the appropriate person/office/service. Scroll down this page to view the drop-in office hours schedule and access the virtual appointment booking system.

For more information on the role of the advisor, how they may be of service, and what they expect of the students they advise, see the  [2025-2026 Advising Syllabus](#).

Drop-in Office Hours

Mondays and Wednesdays from 1pm to 4pm, in Burnside Hall room 322.

Schedule Change Alert

Drop-in Office Hours

Mondays and Wednesdays from 1pm to 4pm, in Burnside Hall room 322.

Schedule Change Alert

Office hours are cancelled Monday September 29th.

Email

advisor.geog@mcgill.ca

Current students: To protect your privacy, the Geography Undergraduate Advising Office will only reply to you at your **official McGill e-mail address**. Always include your student ID number. Please check your McGill e-mail regularly to ensure that you don't miss important messages.

Virtual Program Advising



[Book a Virtual Appointment](#)

If prompted, login with your McGill email and password to access the booking site. New appointment slots become available on the Thursday and Friday for the end of the

Resources for New Students



[Resources and FAQ](#)

New to McGill or Geography in general? Access the Geography Advising Office's Resources and Frequently Asked Questions page for new students to help get your bearings.

Undergraduate Research



[Research Opportunities](#)

Learn more about research opportunities for undergraduate students with Professors in the Department of Geography, including Honours programs, Independent research courses

Student Association Degree Planning Resources



MUGS Degree Planning Guide

SASSS Degree Planning Resources

Access the degree planning resources from our two Departmental student associations, the McGill Undergraduate Geography Society (MUGS) and the Student Association of Sustainability, Science and Society (SASSS) for helpful guidance from your peers to make the best of your time at McGill. You may use these resources for degree planning purposes, but keep in mind that you should always verify your degree requirements and degree plan with your Department and Faculty-level Advisors to ensure that your plan is consistent with Faculty policies and overall degree requirements needed to graduate.

Faculty of Science and Faculty of Arts Advising Offices



Science Office for Undergraduate Student Advising (SOUSA)

Arts Office of Advising and Student Information Services (OASIS)

Faculty Advisors (or Degree Advisors) oversee students' overall degree requirements and manage Faculty-level degree policies including Exchanges and Study Away as well as Degree transfers. Access your Faculty's advising office website to learn more about Faculty advising services and Faculty policies that apply to your degree. SOUSA supports BSc and BA&Sc degree students, while OASIS supports BA degree students.

your Faculty's advising office website to learn more about Faculty advising services and Faculty policies that apply to your degree. SOUSA supports BSc and BA&Sc degree students, while OASIS supports BA degree students.

Science Internship and Field Studies Office (IFSO)

Arts Internship Office (AIO)



McGill Field Study Semesters

Faculty of Arts Summer Internship Postings

Faculty of Science Internship Program

Find your own Internship

Faculty of Arts Internship Awards

The Science Internship & Field Studies Office promotes field studies and internships to interested students seeking hands-on experience. The office coordinates the field study semesters offered through the Faculty of Science and open to all degree students, and provides valuable information on the Science Internship program for B.Sc. and B.A.&Sc. degree students.

Are you a B.A. or B.A.&Sc. degree student looking to gain firsthand professional or research experience and enrich your academic studies through an internship? Discover a multitude of internship opportunities all around the world or find your own internship with our guidance.

McGill Policy on Assessment of Student Learning

McGill Policy on Assessment of Student Learning (PASL)

The Policy on Assessment of Student Learning (PASL) is intended to provide a framework for assessment practices at McGill. The new principles-based Policy has replaced the former University Student Assessment Policy (USAP) as of Fall 2024. PASL applies to all undergraduate and graduate courses for which credit is earned and students receive a final grade on an official McGill transcript.



McGill Student Wellness Hub

Student Wellness Hub Website

Local Wellness Advisors (LWAs)

Telehealth Services

Workshops

The Student Wellness Hub provides a range of services to support the well-being of McGill Students with a focus on *awareness, prevention, and early intervention*. Follow [@HealthierMcGill](#) for updates on Hub services, wellness tips, and upcoming events.



McGill Career Planning Service (CaPS)

Career Advising

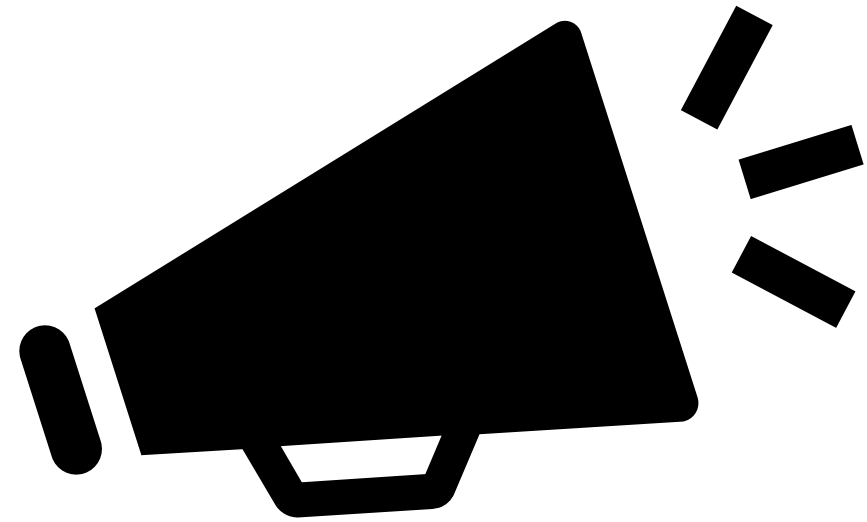
Job Search Skills and Resources

Graduate School Resources

myFuture Portal

CaPS, McGill's Central Career Services, supports student career and leadership development through career counselling and advising, skills development workshops, experiential learning and career exploration programs, mentoring, and career and networking events. CaPS provides and oversees a wide variety of resources and tools to help students search for part-time / summer jobs, internships and post-graduation opportunities, including the myFuture platform and the Co-Curricular Record, with the goal of helping students become career-ready now and for their future.

Join the Geography Advising Office mailing list!



Scan to access the
sign-up webform!

(if prompted, login with
your McGill email and
password)

- Stay in the loop with **opportunities** and **events** of interest to Geography, Sustainability and Urban studies students!
- Receive important news and announcements about **advising services, courses, degree planning resources**, and more!



McGill

Department of
Geography



McGill

Department of
Geography

Département
de géographie



@mcgill.geog



@DepartmentOfGeographyMcGillUniversity



@mcgillgeography.bsky.social

**Follow the Department of
Geography's social media
for news and updates
of interest for our community!**



Faculty Advising Offices

Department Advisors collaborate with your **Faculty Advisors (also called Degree Advisors)** to help support you throughout your degree. Department Advisors are primarily responsible for overseeing that program requirements are met and provide course registration support, while the Faculty Advisors oversee:

- Foundation program requirements.
- University and Faculty regulations and policies.
- Study away/exchanges.
- Final exam issues (e.g. implications of deferring an exam).
- Interfaculty transfers
- Readmission.

Faculty Advising Offices

Bachelor of Arts:

[Arts Office of Advising and Student Information Services](#)
(Arts OASIS).



📍 Dawson Hall, ground floor.

Bachelor of Science:

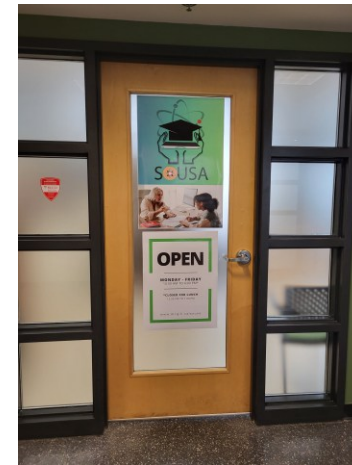
[Science Office for Undergraduate Student Advising](#) (SOUSA).



📍 Adams Building, room 23.

Bachelor of Arts & Science:

Degree Advisor Tania Raggo, based at SOUSA.





Department of Geography

Burnside Hall, floors 3 to 7

- Classrooms (rooms 306, 308, 426 and 429)
- Undergraduate Student Lounge (room 312)
- Undergraduate Advising Office (room 322)
- Administrative Office (room 305)
- Geographic Information Centre (5th floor)
- Computer lab (room 511)
- Physical Geography laboratories (6th & 7th floors)

Newly renovated study spaces, and gender neutral/accessible bathrooms located in the Burnside basement.



Geographic
Information
Centre

Geographic Information Centre (GIC)

Home of Geospatial Data Science at McGill

Undergraduate Orientation

August 26th, 2025

Dept. of Geography, McGill

What?

Home of Geospatial Data Science at McGill

Support in all questions regarding geospatial data sciences

Geographic Information Systems

Remote Sensing

R / Python / PostGreSQL

for all of McGill community

researchers

students

staff

So, what specifically?

Public computer area

40 well-equipped workstations, plus 10 further workstations remotely accessible

Open work space

lots of space & power outlets

Seminar room BH512

book it when you need it

Workshops

every week (during term, starting Sept.)

R, ArcGIS, QGIS, Python, SQL, ...

GeoAnalytics Lab

8 even better equipped workstations, also accessible remotely

Individual geospatial support

six front desk students, one research assistant, one GIS technician, and the director

Map making services

Plotting services

Equipment lending

tablets & cameras for field work, GNSS receiver

Drone flying services

get aerial images for your research project

Who?

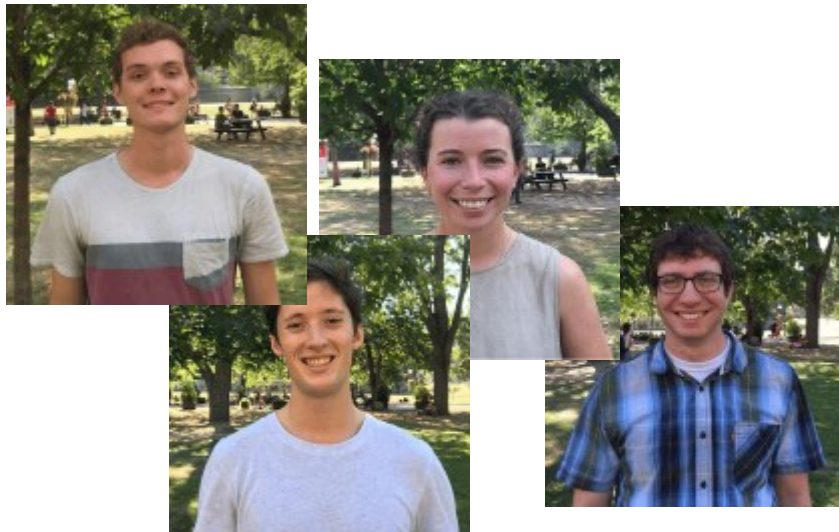
Dr. Tim Elrick, Director



Ruilan Shi,
Senior GIS
technician



Isaac Wong,
Research
Assistant



six front desk students
(here: Noé, Matt, Hannah, Brian)

When?

In person

during term

(as of 2nd week)

Monday to Friday, 8:30 a.m. to 9:00 p.m.

front desk: 12 hours

Saturday and Sunday, 12:00 to 6:00 p.m.

front desk: 6 hours

Through Zoom

Go to our Booking page at www.gic.mcgill.ca

GIS Day at

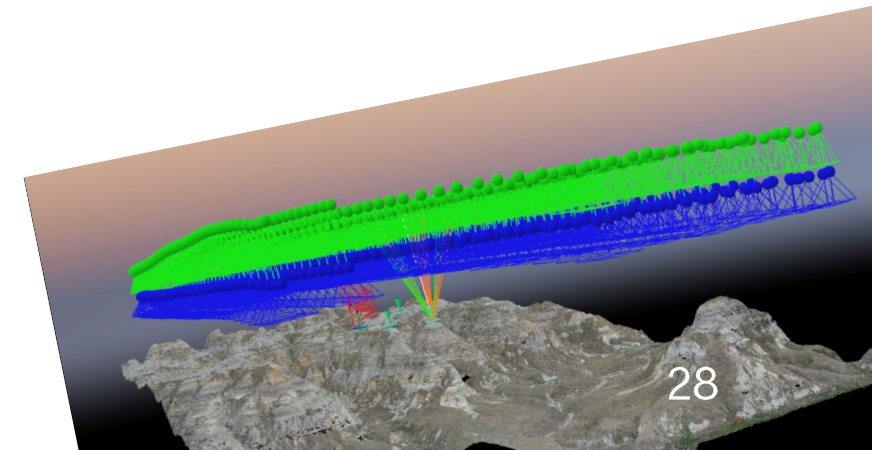
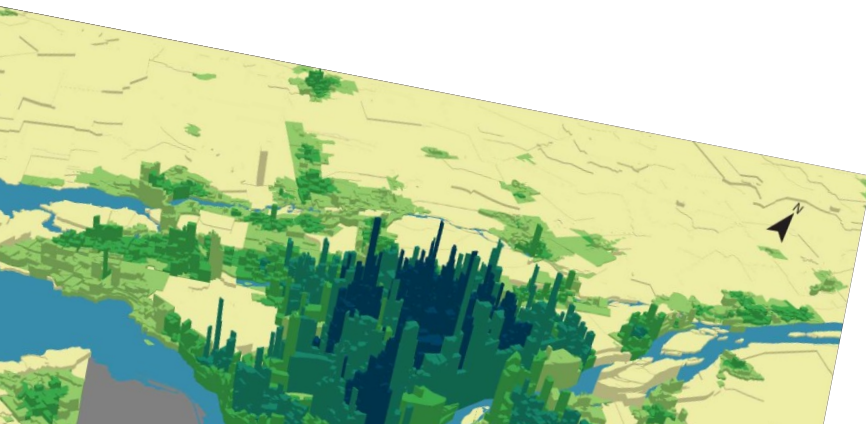
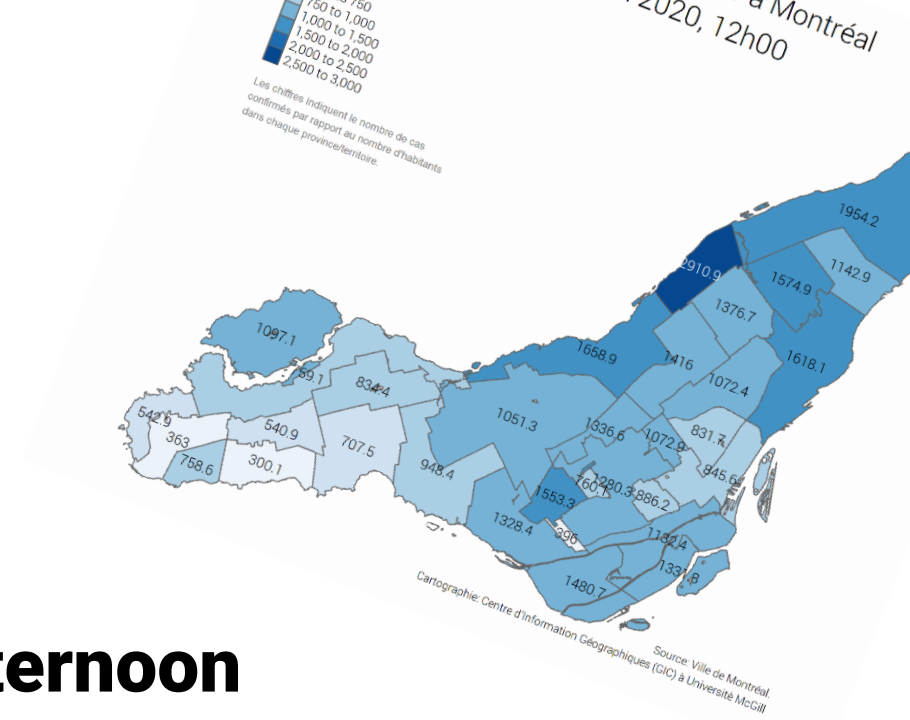


Geographic
Information
Centre

Save the date!

Wednesday, Nov 13 in the afternoon

Learn about the latest and greatest in
GIS, Remote sensing & geospatial data science



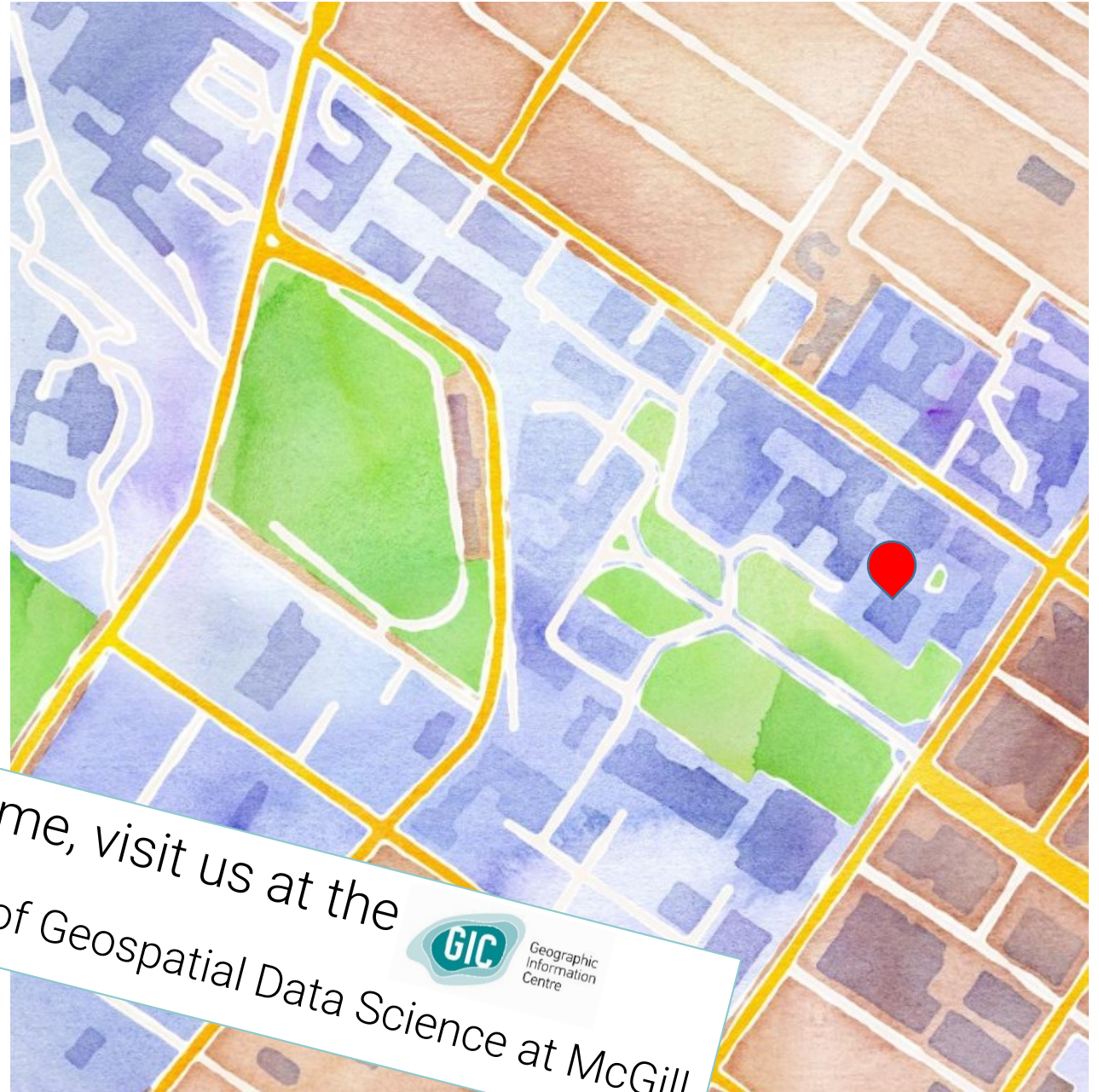
Where?

gic.mcgill.ca

Burnside Hall

5th floor

Come, visit us at the
Home of Geospatial Data Science at McGill





Welcome
Bienvenue



MCGILL LIBRARIES ORIENTATION

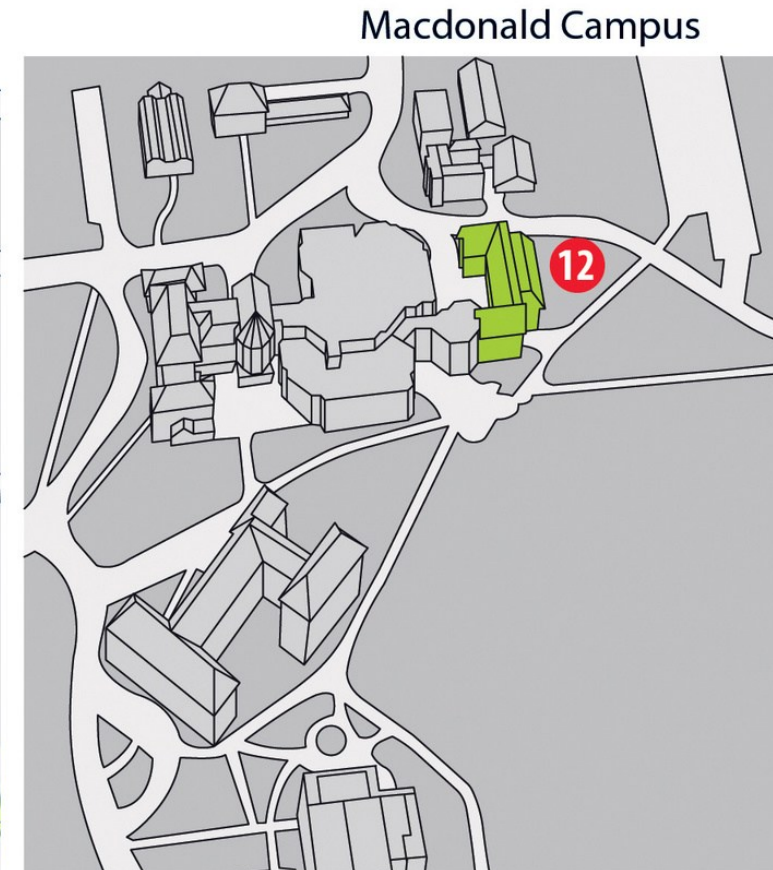
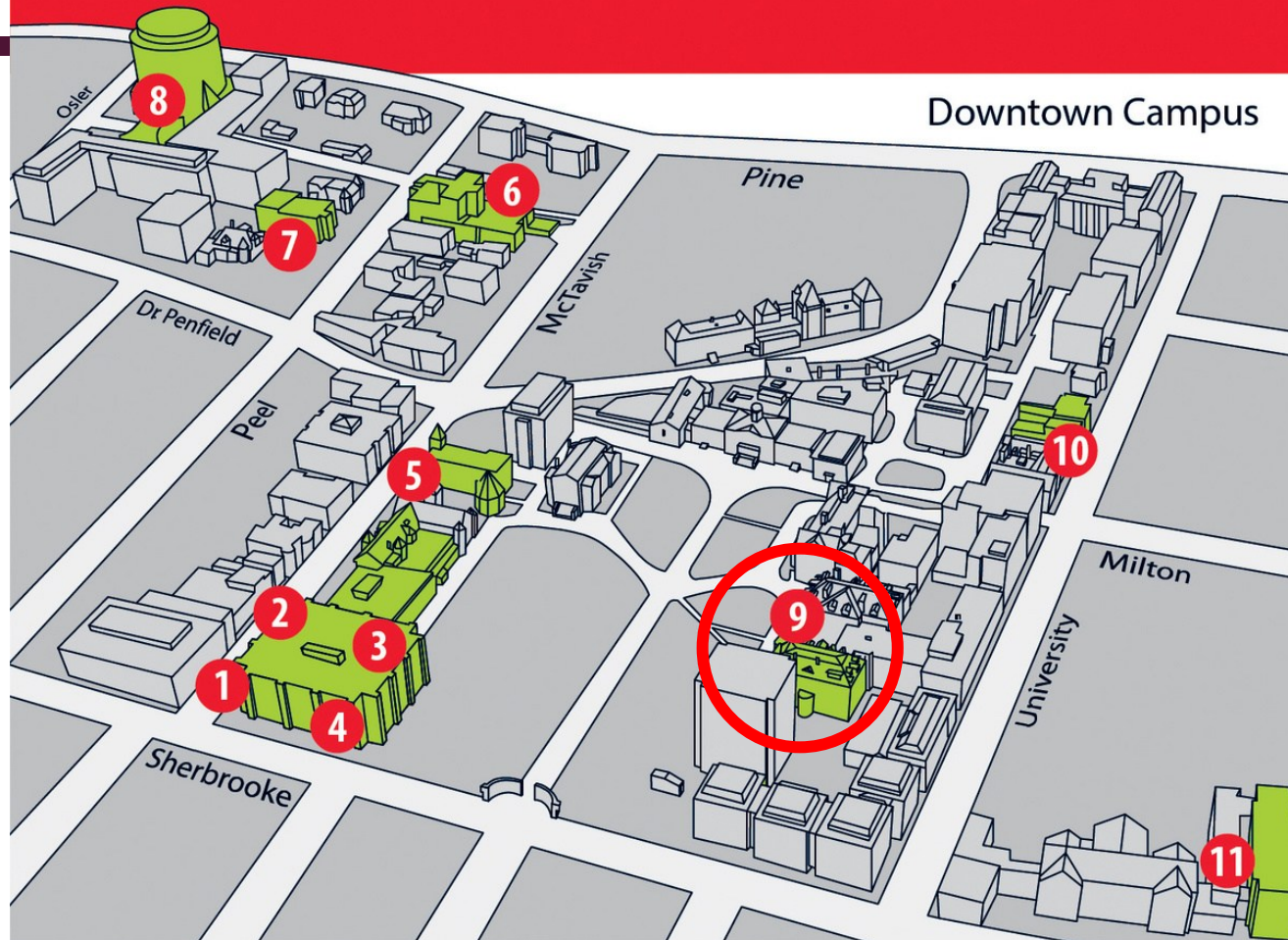
**Schulich Library
McGill University Libraries
August 2025**



Schulich Library

- **Liaison Librarians** at the Schulich Library
- **We can help you**
 - Use the library's collections, services, and spaces.
 - Search for research literature.
 - Manage and cite references.
 - Manage research data.
 - Answer questions related to copyright, scholarly communications and more.

email: Schulich.library@mcgill.ca



- 1 Humanities & Social Sciences Library
- 2 Rare Books & Special Collections
- 3 McGill University Archives
- 4 Visual Arts Collection
- 5 Islamic Studies Library
- 6 Education Curriculum Resources Centre
- 7 Nahum Gelber Law Library

- McLennan-Redpath Complex | 514-398-4734
- McLennan Library Bldg, 4th flr | 514-398-4711
- McLennan Library Bldg, 4th flr | 514-398-4711
- McLennan Library Bldg, 4th flr | 514-398-1859
- Morrice Hall | 514-398-3662
- Education Bldg, 1st flr | 514-398-5726
- 3660 Peel St | 514-398-4715

- 8 Osler Library of the History of Medicine
- 9 Schulich Library of Physical Sciences, Life Sciences, and Engineering
- 10 Birks Reading Room
- 11 Marvin Duchow Music Library
- 12 Macdonald Campus Library

- McIntyre Medical Bldg, 3rd flr | 514-398-4475 ext. 09873
- Macdonald-Stewart Library Bldg | 514-398-4769
- William and Henry Birks Bldg, 2nd flr | 514-398-4127
- Elizabeth Wirth Music Bldg, 3rd flr | 514-398-4695
- Barton Bldg, 2nd flr | 514-398-7881

Schulich Library

- Over 800 seats.
- Mix of quiet and group study space.
- 3D printer service.



Check the website for opening hours,
which change throughout the semester!

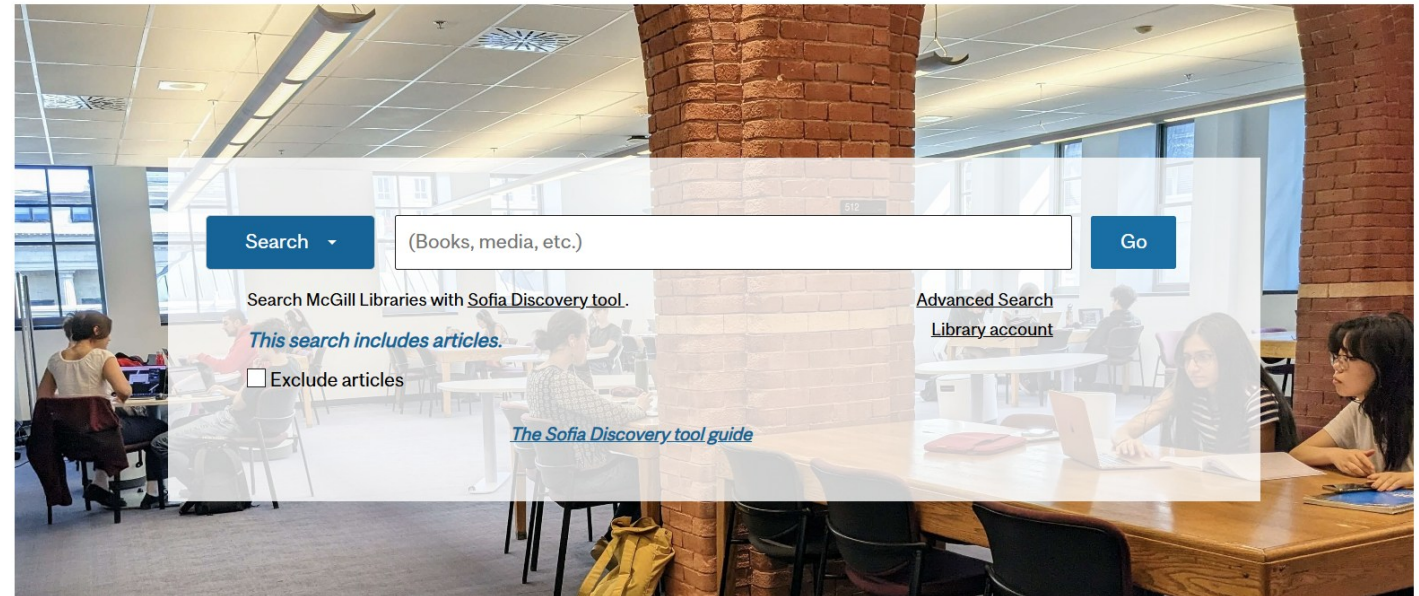


Schulich Library Tours

A number of 45 minute tours offered over the next few weeks,
come see what the Library has to offer!

Schedule and sign up on the [McGill Libraries Workshops](#) page!





[Research Guides](#)



[Databases](#)



[Ask a Librarian](#)



[Hours](#)



[Room Booking](#)



[Course Reserves](#)

Additional information



Libraries



Locations

Using the libraries

Research services

Instructional support

Contact us

About



Links under 'Using the libraries' include...

- Accessing online resources.
- Borrowing from McGill.
- Course reserves and readings.
- Interlibrary loan.
- Course guides and citation guides.
- And more!

Links under Research services include...

- Collections.
- Open Access.
- Research data services.
- Workshops and tours.
- eScholarship.
- And more!

Geography subject guide

Geography

This subject guide offers resources on both human and physical geography.



Home

Welcome to the Geography subject guide!

Library of Congress classification numbers for Geography

Sofia Discovery tool | SEARCH MCGILL RESOURCES

Finding books

E-books

Finding articles

Additional databases for crossdisciplinary research

Geographic policy research

Finding dissertations, theses, and open access resources

Dissertations and open access resources

Finding grey literature

Finding maps & geospatial data

Finding credible Internet information

Welcome to the Geography subject guide!

This subject guide recommends useful resources for research in both human geography and physical geography. Resources are categorized by the type of material. Use the tabs on the left menu to explore them. Feel free to email or book an appointment with me if you have a question.

If the Library doesn't have the articles or books that you need, you may request them through [InterLibrary Loan](#) (ILL) or email me the suggestion. We may be able to purchase a copy for the Library.

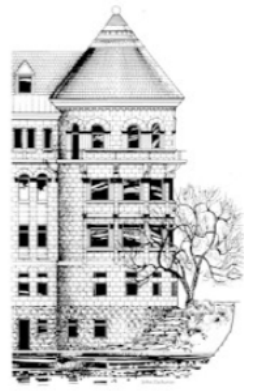
If you need to access McGill Library's electronic resources, such as e-books, e-journals or article databases from off-campus, use either [EZproxy](#) or [VPN](#).

Library of Congress classification numbers for Geography

Geography studies physical environments and human habitats. It deals with people and places and covers a wide range of issues, such as global warming and climate change, food and water resources, management of ecosystems, human health, regional economic disparities, urban infrastructure, native land claims, and permafrost problems. You can browse the shelves using the following classification numbers. Note that a significant part of the Library's collection is in electronic format. Please use the [Library Catalogue](#) to explore our full collection.

- DE23-31 [Historical] geography [world. European countries]
- E179.5 Historical geography [of America]
- G1-922 Geography (General)

Schulich Librarians



[Schulich Librarians](#)

Email me

Contact:
Schulich Library of Physical Science
Sciences, and Engineering
514-398-4769

Need help? Ask us!

Citation management

- Store references and PDF full text.
- Generate bibliographies.
- Works with LaTeX.
- Free of charge for McGill users.
- Downloadable on this page: [Citation guides & software | Libraries - McGill University](#)



Schedule and sign up on the [Library Workshops](#) page!

More on Orientation



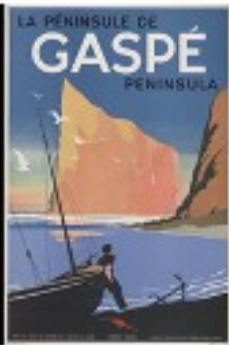
Download the
Welcome Handbook!


[Welcome to the McGill Libraries |
Libraries - McGill University](#)



Beyond Books

News & events



 View the full calendar »

Find News, Workshops and Events offered by the Library at: [News & events | Libraries - McGill University](#)

Take your research skills to the next level with workshops or discover the Library's rare & special collections through unique events and exhibitions.

BOOKMARK WORTHY SITES

Libraries homepage and catalogue

- [Libraries - McGill University](#)

Geography subject guide

- libraryguides.mcgill.ca/geography

Orientation page

- [Welcome to the McGill Libraries | Libraries - McGill University](#)

Questions? Ask us!

- [Questions? Ask a librarian! | Libraries - McGill University](#)

Social media accounts

- [Follow the Libraries! | Libraries - McGill University](#)

Health and wellness at the Library

- [Health and wellness | Libraries - McGill University](#)



Thank you
Merci !

Student Services



Refer to the [Student Services website](#), or ask Michelle to learn more about services available to help promote and support your wellbeing and academic success:

- [Campus Life & Engagement.](#)
- [Career Planning Service.](#)
- [International Student Services.](#)
- [Office of Religious & Spiritual Life.](#)
- [Student Accessibility & Achievement.](#)
- [Scholarships & Student Aid.](#)
- [Student Wellness Hub.](#)

- [Office of the Dean of Students.](#)
- [First Peoples' House.](#)




McGill | Campus Map

Find a building

Untitled

View on Google Maps



Keyboard shortcuts | © 2025 Google | Terms | Report a problem

Brown Student Services

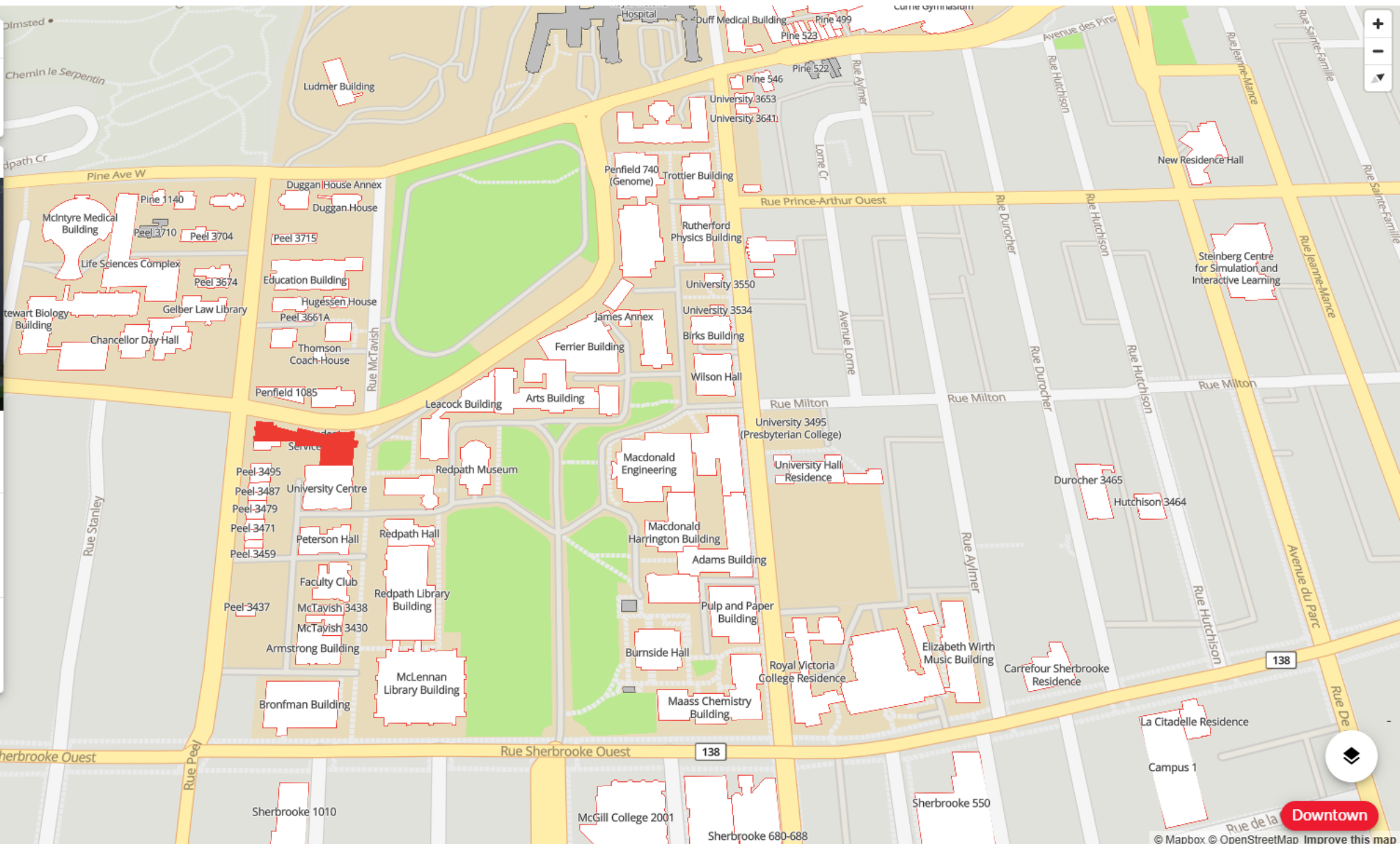
3600 rue McTavish

Directions

Center

Share

Since it opened in 1999, the various departments in this building have served the non-academic needs of students, providing services such as healthcare and career advice.



A detailed map of the McGill University campus in Montreal, Quebec. The map shows a grid of streets including Pine Ave W, Rue Stanley, Rue Peel, Rue Sherbrooke Ouest, Rue Prince-Arthur Ouest, Rue Durocher, Rue Hutchison, Rue Milton, Rue Du Rocher, Rue Jeanne-Mance, Rue Saint-Famille, and Rue de la Paroisse. Numerous buildings are labeled, including the McIntyre Medical Building, Life Sciences Complex, Stewart Biology Building, Chancellor Day Hall, Gelber Law Library, Duggan House Annex, Duggan House, Education Building, Hugessen House, Thomson Coach House, Penfield 1085, Leacock Building, Arts Building, James Annex, Ferrier Building, Birks Building, Wilson Hall, Macdonald Engineering, Macdonald Harrington Building, Adams Building, Pulp and Paper Building, Burnside Hall, Maass Chemistry Building, Elizabeth Wirth Music Building, Carrefour Sherbrooke Residence, La Citadelle Residence, Campus 1, Sherbrooke 550, McGill College 2001, Sherbrooke 680-688, Durocher 3465, Hutchison 3464, University Hall Residence, University 3495 (Presbyterian College), University 3534, University 3550, Rutherford Physics Building, Trotter Building, Penfield 740 (Genome), University 3653, University 3641, Pine 546, Pine 522, Pine 499, Pine 523, Ludmer Building, Hospital, Duff Medical Building, Currier Gymnasium, New Residence Hall, Steinberg Centre for Simulation and Interactive Learning, and the Brown Student Services building (highlighted in red). The map also shows green spaces and various landmarks.

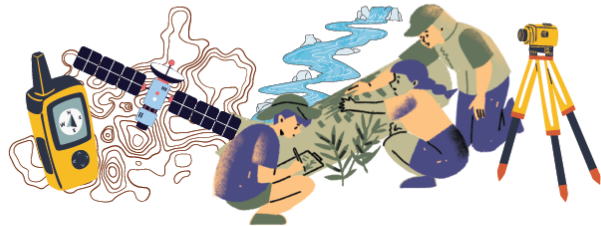
45

Opportunities to enrich your degree!



Department of
Geography

Département
de géographie



The Faculty of Science offers an **internship program** and **summer research awards** for BSc and BA&Sc degree students. Applications for the research awards are due in February for the coming summer.

Learn more about these opportunities by scanning the QR codes below to access the SURA, URSA, SIP websites!



Science Internship
Program (SIP)*



Science Undergraduate
Research Awards (SURA)



Undergraduate Student
Research Awards
(URSA)*

*Open to BA students from Science Departments with some restrictions



Department of
Geography

Département
de géographie



The Faculty of Arts Internship Office offers **summer internship postings**, **internship funding** and **summer research internship awards** for BA and BA&Sc degree students. Applications are due in February and March for the coming summer.

Learn more about these opportunities by scanning the QR codes below to access the Arts Internship Office website!



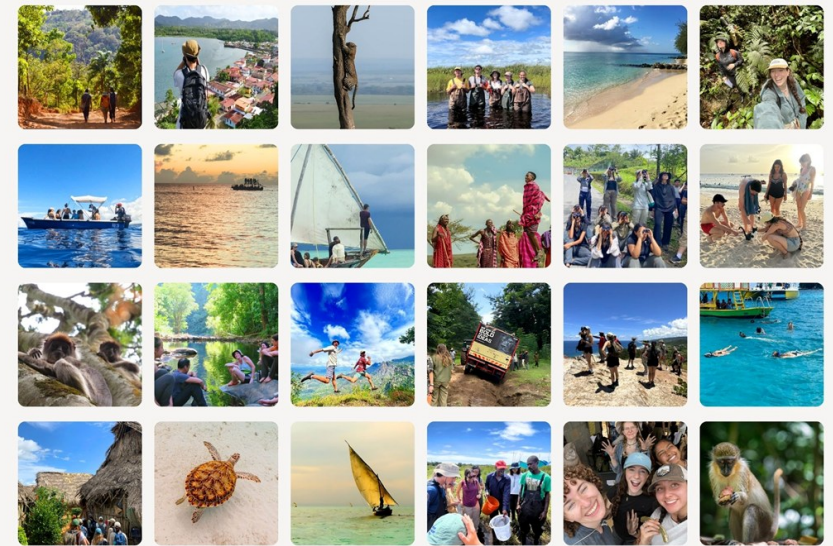
Summer Internship
Postings



Summer Internship
Awards (AIA)



Summer Research
Internship Awards (ARIA)



McGill Field Study Semesters

East Africa - Barbados - Panama



Opportunities to enrich your degree!

Arts internship Office (AIO)



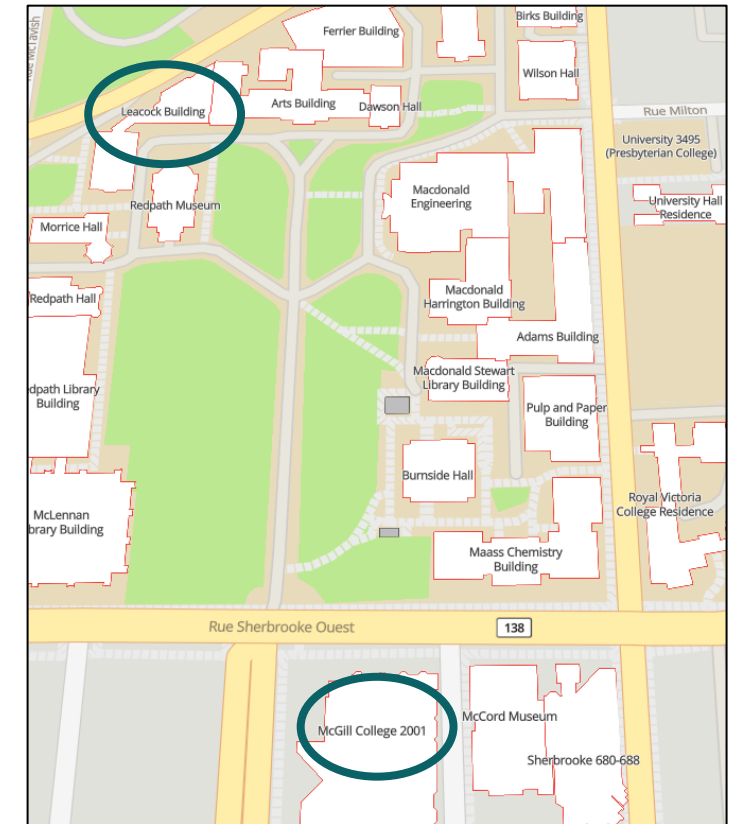
📍 Leacock buildings, room 370

Science Field Studies and Internship Office (IFSO)



📍 2001 McGill College, room 646B*

**Accessible by appointment only*





Students' Association of Sustainability, Science, and Society

Departmental Orientation 2025-2026

Who are we?



Ava Kleban- Co President



Cristina Gandasegui- Co-President



Emet Shifrin- VP Finance



Capucine Parvery- Lower Year Representative



Adele Valero- VP Comms



Bella-Mai McNulty- VP Events



Syona Vashisth- VP Communications



SASSS Sports



SUS Awards Night!



Our Events

Pumpkin Carving!



Garden Gala



Our Resources

Degree Outline			Degree Checklist		
UD (if applicable)	SPRING	WINTER	DEGREE PROGRAM	Courses	<div> <div>Complete</div> <div>In progress</div> <div>Not started</div> <div>Elective</div> <div>Prerequisite</div> </div> <div> <div>Please indicate your progress in the degree outline using these color-coded symbols</div> </div>
			Required	ENVR 101 GEOL 100 GEOL 101 GEOL 102 GEOL 103 GEOL 104 GEOL 105 GEOL 106 GEOL 107 GEOL 108 GEOL 109 GEOL 110 GEOL 111 GEOL 112 GEOL 113 GEOL 114 GEOL 115 GEOL 116 GEOL 117 GEOL 118 GEOL 119 GEOL 120 GEOL 121 GEOL 122 GEOL 123 GEOL 124 GEOL 125 GEOL 126 GEOL 127 GEOL 128 GEOL 129 GEOL 130 GEOL 131 GEOL 132 GEOL 133 GEOL 134 GEOL 135 GEOL 136 GEOL 137 GEOL 138 GEOL 139 GEOL 140 GEOL 141 GEOL 142 GEOL 143 GEOL 144 GEOL 145 GEOL 146 GEOL 147 GEOL 148 GEOL 149 GEOL 150 GEOL 151 GEOL 152 GEOL 153 GEOL 154 GEOL 155 GEOL 156 GEOL 157 GEOL 158 GEOL 159 GEOL 160 GEOL 161 GEOL 162 GEOL 163 GEOL 164 GEOL 165 GEOL 166 GEOL 167 GEOL 168 GEOL 169 GEOL 170 GEOL 171 GEOL 172 GEOL 173 GEOL 174 GEOL 175 GEOL 176 GEOL 177 GEOL 178 GEOL 179 GEOL 180 GEOL 181 GEOL 182 GEOL 183 GEOL 184 GEOL 185 GEOL 186 GEOL 187 GEOL 188 GEOL 189 GEOL 190 GEOL 191 GEOL 192 GEOL 193 GEOL 194 GEOL 195 GEOL 196 GEOL 197 GEOL 198 GEOL 199 GEOL 200 GEOL 201 GEOL 202 GEOL 203 GEOL 204 GEOL 205 GEOL 206 GEOL 207 GEOL 208 GEOL 209 GEOL 210 GEOL 211 GEOL 212 GEOL 213 GEOL 214 GEOL 215 GEOL 216 GEOL 217 GEOL 218 GEOL 219 GEOL 220 GEOL 221 GEOL 222 GEOL 223 GEOL 224 GEOL 225 GEOL 226 GEOL 227 GEOL 228 GEOL 229 GEOL 230 GEOL 231 GEOL 232 GEOL 233 GEOL 234 GEOL 235 GEOL 236 GEOL 237 GEOL 238 GEOL 239 GEOL 240 GEOL 241 GEOL 242 GEOL 243 GEOL 244 GEOL 245 GEOL 246 GEOL 247 GEOL 248 GEOL 249 GEOL 250 GEOL 251 GEOL 252 GEOL 253 GEOL 254 GEOL 255 GEOL 256 GEOL 257 GEOL 258 GEOL 259 GEOL 260 GEOL 261 GEOL 262 GEOL 263 GEOL 264 GEOL 265 GEOL 266 GEOL 267 GEOL 268 GEOL 269 GEOL 270 GEOL 271 GEOL 272 GEOL 273 GEOL 274 GEOL 275 GEOL 276 GEOL 277 GEOL 278 GEOL 279 GEOL 280 GEOL 281 GEOL 282 GEOL 283 GEOL 284 GEOL 285 GEOL 286 GEOL 287 GEOL 288 GEOL 289 GEOL 290 GEOL 291 GEOL 292 GEOL 293 GEOL 294 GEOL 295 GEOL 296 GEOL 297 GEOL 298 GEOL 299 GEOL 300 GEOL 301 GEOL 302 GEOL 303 GEOL 304 GEOL 305 GEOL 306 GEOL 307 GEOL 308 GEOL 309 GEOL 310 GEOL 311 GEOL 312 GEOL 313 GEOL 314 GEOL 315 GEOL 316 GEOL 317 GEOL 318 GEOL 319 GEOL 320 GEOL 321 GEOL 322 GEOL 323 GEOL 324 GEOL 325 GEOL 326 GEOL 327 GEOL 328 GEOL 329 GEOL 330 GEOL 331 GEOL 332 GEOL 333 GEOL 334 GEOL 335 GEOL 336 GEOL 337 GEOL 338 GEOL 339 GEOL 340 GEOL 341 GEOL 342 GEOL 343 GEOL 344 GEOL 345 GEOL 346 GEOL 347 GEOL 348 GEOL 349 GEOL 350 GEOL 351 GEOL 352 GEOL 353 GEOL 354 GEOL 355 GEOL 356 GEOL 357 GEOL 358 GEOL 359 GEOL 360 GEOL 361 GEOL 362 GEOL 363 GEOL 364 GEOL 365 GEOL 366 GEOL 367 GEOL 368 GEOL 369 GEOL 370 GEOL 371 GEOL 372 GEOL 373 GEOL 374 GEOL 375 GEOL 376 GEOL 377 GEOL 378 GEOL 379 GEOL 380 GEOL 381 GEOL 382 GEOL 383 GEOL 384 GEOL 385 GEOL 386 GEOL 387 GEOL 388 GEOL 389 GEOL 390 GEOL 391 GEOL 392 GEOL 393 GEOL 394 GEOL 395 GEOL 396 GEOL 397 GEOL 398 GEOL 399 GEOL 400 GEOL 401 GEOL 402 GEOL 403 GEOL 404 GEOL 405 GEOL 406 GEOL 407 GEOL 408 GEOL 409 GEOL 410 GEOL 411 GEOL 412 GEOL 413 GEOL 414 GEOL 415 GEOL 416 GEOL 417 GEOL 418 GEOL 419 GEOL 420 GEOL 421 GEOL 422 GEOL 423 GEOL 424 GEOL 425 GEOL 426 GEOL 427 GEOL 428 GEOL 429 GEOL 430 GEOL 431 GEOL 432 GEOL 433 GEOL 434 GEOL 435 GEOL 436 GEOL 437 GEOL 438 GEOL 439 GEOL 440 GEOL 441 GEOL 442 GEOL 443 GEOL 444 GEOL 445 GEOL 446 GEOL 447 GEOL 448 GEOL 449 GEOL 450 GEOL 451 GEOL 452 GEOL 453 GEOL 454 GEOL 455 GEOL 456 GEOL 457 GEOL 458 GEOL 459 GEOL 460 GEOL 461 GEOL 462 GEOL 463 GEOL 464 GEOL 465 GEOL 466 GEOL 467 GEOL 468 GEOL 469 GEOL 470 GEOL 471 GEOL 472 GEOL 473 GEOL 474 GEOL 475 GEOL 476 GEOL 477 GEOL 478 GEOL 479 GEOL 480 GEOL 481 GEOL 482 GEOL 483 	

BSB Degree Planning Sheet				
Course Code	Course Name	Credits	Prerequisites	Notes
Healthcare Sector (10 credits)				
HEM1 001	Health, Health Care and Sustainability	3	0	HEM1 001 and HEM1 002 or HEM1 003 or HEM1 004
HEM1 002	Healthcare Sustainability	3	0	HEM1 001 and HEM1 002 or HEM1 003 or HEM1 004
HEM1 003	Health Environmental Systems, Policy and Implementation	3	0	HEM1 001 and HEM1 002 or HEM1 003 or HEM1 004
HEM1 004	Resource Use in Sustainability	3	0	HEM1 001
HEM1 005	Healthcare Systems	3	0	HEM1 001
HEM1 006	The Healthcare Workforce	3	0	HEM1 001
HEM1 007	Healthcare Quality Improvement	3	0	HEM1 001
HEM1 008	Healthcare Systems	3	0	HEM1 001
HEM1 009	Healthcare Systems	3	0	HEM1 001
HEM1 010	Healthcare Systems	3	0	HEM1 001
Engineering Sector (10 credits)				
ENG1 001	Engineering Fundamentals	3	0	ENG1 001 or ENG1 002 or ENG1 003 or ENG1 004
ENG1 002	Engineering Fundamentals	3	0	ENG1 001 or ENG1 002 or ENG1 003 or ENG1 004
ENG1 003	Engineering Fundamentals	3	0	ENG1 001 or ENG1 002 or ENG1 003 or ENG1 004
ENG1 004	Engineering Fundamentals	3	0	ENG1 001 or ENG1 002 or ENG1 003 or ENG1 004
ENG1 005	Engineering Fundamentals	3	0	ENG1 001 or ENG1 002 or ENG1 003 or ENG1 004
ENG1 006	Engineering Fundamentals	3	0	ENG1 001 or ENG1 002 or ENG1 003 or ENG1 004
ENG1 007	Engineering Fundamentals	3	0	ENG1 001 or ENG1 002 or ENG1 003 or ENG1 004
ENG1 008	Engineering Fundamentals	3	0	ENG1 001 or ENG1 002 or ENG1 003 or ENG1 004
ENG1 009	Engineering Fundamentals	3	0	ENG1 001 or ENG1 002 or ENG1 003 or ENG1 004
ENG1 010	Engineering Fundamentals	3	0	ENG1 001 or ENG1 002 or ENG1 003 or ENG1 004
Business Sector (10 credits)				
BUS1 001	Business Fundamentals	3	0	BUS1 001 or BUS1 002 or BUS1 003 or BUS1 004
BUS1 002	Business Fundamentals	3	0	BUS1 001 or BUS1 002 or BUS1 003 or BUS1 004
BUS1 003	Business Fundamentals	3	0	BUS1 001 or BUS1 002 or BUS1 003 or BUS1 004
BUS1 004	Business Fundamentals	3	0	BUS1 001 or BUS1 002 or BUS1 003 or BUS1 004
BUS1 005	Business Fundamentals	3	0	BUS1 001 or BUS1 002 or BUS1 003 or BUS1 004
BUS1 006	Business Fundamentals	3	0	BUS1 001 or BUS1 002 or BUS1 003 or BUS1 004
BUS1 007	Business Fundamentals	3	0	BUS1 001 or BUS1 002 or BUS1 003 or BUS1 004
BUS1 008	Business Fundamentals	3	0	BUS1 001 or BUS1 002 or BUS1 003 or BUS1 004
BUS1 009	Business Fundamentals	3	0	BUS1 001 or BUS1 002 or BUS1 003 or BUS1 004
BUS1 010	Business Fundamentals	3	0	BUS1 001 or BUS1 002 or BUS1 003 or BUS1 004
Other Sector (10 credits)				
OTH1 001	Other Fundamentals	3	0	OTH1 001 or OTH1 002 or OTH1 003 or OTH1 004
OTH1 002	Other Fundamentals	3	0	OTH1 001 or OTH1 002 or OTH1 003 or OTH1 004
OTH1 003	Other Fundamentals	3	0	OTH1 001 or OTH1 002 or OTH1 003 or OTH1 004
OTH1 004	Other Fundamentals	3	0	OTH1 001 or OTH1 002 or OTH1 003 or OTH1 004
OTH1 005	Other Fundamentals	3	0	OTH1 001 or OTH1 002 or OTH1 003 or OTH1 004
OTH1 006	Other Fundamentals	3	0	OTH1 001 or OTH1 002 or OTH1 003 or OTH1 004
OTH1 007	Other Fundamentals	3	0	OTH1 001 or OTH1 002 or OTH1 003 or OTH1 004
OTH1 008	Other Fundamentals	3	0	OTH1 001 or OTH1 002 or OTH1 003 or OTH1 004
OTH1 009	Other Fundamentals	3	0	OTH1 001 or OTH1 002 or OTH1 003 or OTH1 004
OTH1 010	Other Fundamentals	3	0	OTH1 001 or OTH1 002 or OTH1 003 or OTH1 004

2024

Sustainability, Science and Society

Degree Guide

Created by the McGill Students'
Association of Sustainability, Science and
Society

A green graphic with white text. At the top, it says "Interested in having a graduated SSS alumni mentor you?". Below that, in large bold letters, is "SSS Alumni Mentorship Program". At the bottom left, it says "Fill out the form for more info!". On the right side, there is a stylized illustration of two hands reaching towards each other, set against a background of overlapping light green circles.

Additional Complementary Courses		Course Substitutions	Requirement Substitutions
ARBA 3: Methods, Discussion, Analysis, Modelling and Management (3 Credits)	AGRI 491	Soil and Water Quality Management	
	ENVR 437	Assessing Environmental Impact	
	ENVR 544	Environmental Measurement and Modelling	
	ESPS 301	Earth-System Modelling	
	ESPS 500	Earth-System Applications	
	GEQG 301	Interdisciplinary Geo-Information Science*	
	GEQG 302	Environmental Management 1	
	GEQG 314	Geospatial Analysis	
	GEQG 414	Advanced Geospatial Analysis	
	GEQG 508	Principles of Remote Sensing	
	GEQG 513	Introduction to Programming for Spatial Sciences	
	GEQG 551	Quantitative Methods	
	GEQG 404	Environmental Management 2	
	GEQG 495	Field Studies - Physical Geography	
	GEQG 509	Qualitative Methods	
GEQG 512	Advanced Quantitative Methods in Social Field Research		
ENVR 529	GIS for Natural Resource Management*		
ENRP 586	Environmental Policy and Planning		
			MGSI 401, COMP 208, ENVR 301, GEQG 315

- Degree Guides
- Degree Plans
- Alumni Programs and Meet-Ups!

Join **SASSS!**



VP Academic

- Liaison to MUGS
- Manage academic resources
- Host study sessions/academic events!

Stay tuned for Winter 2026 positions!

- VP Events
- VP Comms



Where to find us?

Instagram: mcgill_sasss

Email: mcgill.sasss@gmail.com



Our meetings! Check our Instagram or email us for the time and place! Open to all SSS students!