

An Analysis of Cycling Infrastructure Decisions in Montréal, Canada

Isobel Cully

Department of Geography, McGill University, Montreal (Quebec) Canada

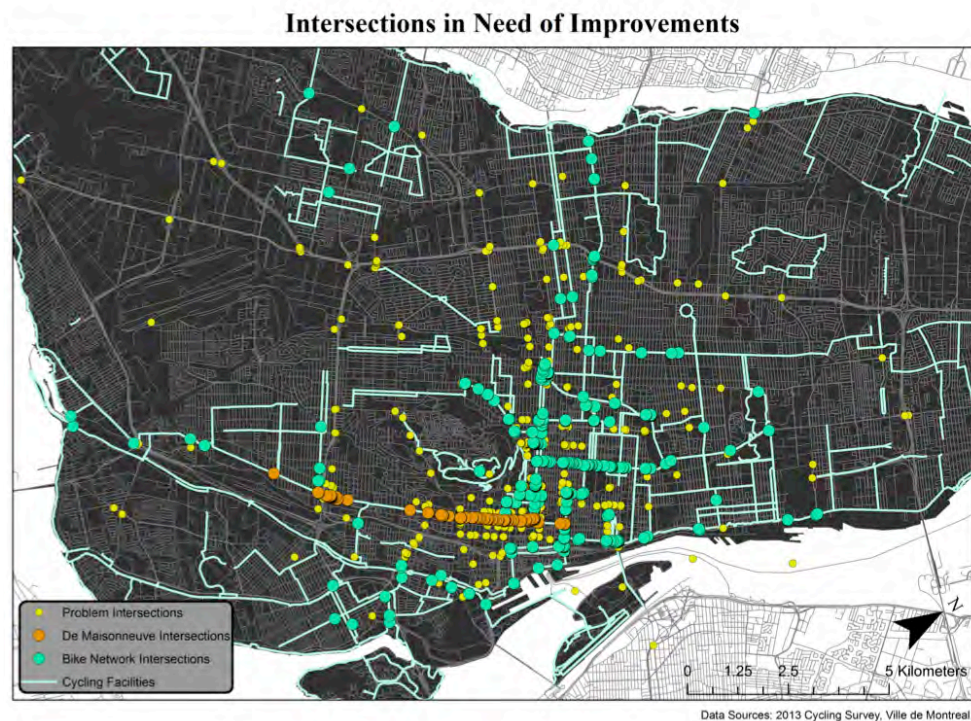
2014

Supervisor: Prof. Kevin Manaugh

Reader: Prof. Ahmed El-Geneidy

ABSTRACT

Cycling as a mode of transportation is gaining popularity in Montreal. With expanded ridership has come a need for more facilities, which has created headaches for policymakers and cycling advocates alike. Empirical studies on bicycle facilities have been shown to produce conflicting results. This study analyses the perception different stakeholders have of cycling and bicycle infrastructure in Montreal. A case study of the De Maisonneuve Boulevard bicycle path highlights the dissonance between stakeholders' interests and the cycling projects conceived by the City of Montreal. This study uses data from key-informant interviews, online cycling surveys and a media analysis. The main findings are that there is a lack of dialogue and education on the topic of cycling.



Location of intersections in need of improvements, as reported by the Montreal Cycling Survey respondents.