

## Full-Time Enrolment by Faculty, by Degree and by Gender

	Fall 2008			Fall 2007			Fall 2003			% Change (1 Years)	% Change (5 Years)
	Female	Male	Total	Female	Male	Total	Female	Male	Total		
<b>All Students</b>											
<b>Undergraduate</b>											
<b>Degrees</b>	11,482 (58.5%)	8,147 (41.5%)	19,629	11,363 (58.9%)	7,917 (41.1%)	19,280	10,895 (60.7%)	7,042 (39.3%)	17,937	+1.8	+9.4
<b>Certificates, Diplomas</b>	61 (50.4%)	60 (49.6%)	121	80 (58.4%)	57 (41.6%)	137	87 (55.1%)	71 (44.9%)	158	-11.7	-23.4
<b>Special, Visiting, Other</b>	246 (57.1%)	185 (42.9%)	431	237 (54.4%)	199 (45.6%)	436	294 (53.7%)	253 (46.3%)	547	-1.1	-21.2
<b>Total Undergraduate</b>	11,789 (58.4%)	8,392 (41.6%)	20,181	11,680 (58.8%)	8,173 (41.2%)	19,853	11,276 (60.5%)	7,366 (39.5%)	18,642	+1.7	+8.3
<b>Graduate</b>											
<b>Masters</b>	1,587 (56.5%)	1,220 (43.5%)	2,807	1,484 (55.8%)	1,176 (44.2%)	2,660	1,553 (50.6%)	1,516 (49.4%)	3,069	+5.5	-8.5
<b>Doctoral</b>	1,316 (47.6%)	1,447 (52.4%)	2,763	1,237 (48.0%)	1,339 (52.0%)	2,576	1,087 (48.1%)	1,171 (51.9%)	2,258	+7.3	+22.4
<b>Total Masters and Doctoral</b>	2,903 (52.1%)	2,667 (47.9%)	5,570	2,721 (52.0%)	2,515 (48.0%)	5,236	2,640 (49.6%)	2,687 (50.4%)	5,327	+6.4	+4.6
<b>Other Graduate</b>											
<b>Certificates, Diplomas</b>	58 (50.0%)	58 (50.0%)	116	50 (47.2%)	56 (52.8%)	106	103 (53.9%)	88 (46.1%)	191	+9.4	-39.3
<b>Special, Visiting, Other</b>	26 (53.1%)	23 (46.9%)	49	13 (32.5%)	27 (67.5%)	40	41 (45.6%)	49 (54.4%)	90	+22.5	-45.6
<b>Total Other Graduate</b>	84 (50.9%)	81 (49.1%)	165	63 (43.2%)	83 (56.8%)	146	144 (51.2%)	137 (48.8%)	281	+13.0	-41.3
<b>Total Graduate</b>	2,987 (52.1%)	2,748 (47.9%)	5,735	2,784 (51.7%)	2,598 (48.3%)	5,382	2,784 (49.6%)	2,824 (50.4%)	5,608	+6.6	+2.3
<b>All Students (Credit)</b>	14,776 (57.0%)	11,140 (43.0%)	25,916	14,464 (57.3%)	10,771 (42.7%)	25,235	14,060 (58.0%)	10,190 (42.0%)	24,250	+2.7	+6.9

## Full-Time Enrolment by Faculty, by Degree and by Gender

	Fall 2008			Fall 2007			Fall 2003			% Change (1 Years)	% Change (5 Years)
	Female	Male	Total	Female	Male	Total	Female	Male	Total		
<b>Postdoctoral</b>	229 (42.6%)	309 (57.4%)	538	208 (42.9%)	277 (57.1%)	485	179 (43.7%)	231 (56.3%)	410	+10.9	+31.2
<b>Residents and Fellows</b>	434 (44.3%)	546 (55.7%)	980	406 (43.1%)	537 (56.9%)	943	308 (38.2%)	499 (61.8%)	807	+3.9	+21.4
<b>Other (Non-credit)</b>											
<b>Farm Management Technology</b>	17 (21.5%)	62 (78.5%)	79	15 (19.0%)	64 (81.0%)	79	13 (20.0%)	52 (80.0%)	65	0.0	+21.5
<b>Continuing Education Unit</b>	0 (0.0%)	2 (100.0%)	2	0 (0.0%)	0 (0.0%)	0	0 (0.0%)	0 (0.0%)	0	-	-
<b>Total Other (Non-credit)</b>	17 (21.0%)	64 (79.0%)	81	15 (19.0%)	64 (81.0%)	79	13 (20.0%)	52 (80.0%)	65	+2.5	+24.6
<b>All Students (Total)</b>	15,456 (56.2%)	12,059 (43.8%)	27,515	15,093 (56.4%)	11,649 (43.6%)	26,742	14,560 (57.0%)	10,972 (43.0%)	25,532	+2.9	+7.8

## Full-Time Enrolment by Faculty, by Degree and by Gender

	Fall 2008			Fall 2007			Fall 2003			% Change (1 Years)	% Change (5 Years)
	Female	Male	Total	Female	Male	Total	Female	Male	Total		
<b>All Students</b>											
Faculty of Agric Environ Sci	949 (67.4%)	458 (32.6%)	1,407	888 (67.1%)	436 (32.9%)	1,324	680 (64.6%)	373 (35.4%)	1,053	+6.3	+33.6
Faculty of Arts	4,481 (66.9%)	2,216 (33.1%)	6,697	4,387 (66.9%)	2,169 (33.1%)	6,556	4,737 (67.3%)	2,306 (32.7%)	7,043	+2.2	-4.9
Faculties of Arts and Science	373 (69.5%)	164 (30.5%)	537	385 (70.3%)	163 (29.7%)	548	0 (0.0%)	0 (0.0%)	0	-2.0	-
Centre for Continuing Ed	120 (46.0%)	141 (54.0%)	261	119 (45.1%)	145 (54.9%)	264	207 (48.7%)	218 (51.3%)	425	-1.1	-38.6
Faculty of Dentistry	117 (59.1%)	81 (40.9%)	198	112 (56.9%)	85 (43.1%)	197	88 (59.5%)	60 (40.5%)	148	+0.5	+33.8
Faculty of Education	1,590 (77.4%)	464 (22.6%)	2,054	1,553 (78.8%)	418 (21.2%)	1,971	1,574 (79.4%)	409 (20.6%)	1,983	+4.2	+3.6
Faculty of Engineering	845 (25.0%)	2,539 (75.0%)	3,384	814 (25.5%)	2,382 (74.5%)	3,196	905 (29.1%)	2,206 (70.9%)	3,111	+5.9	+8.8
Faculty of Law	421 (54.7%)	349 (45.3%)	770	421 (54.5%)	351 (45.5%)	772	394 (54.6%)	327 (45.4%)	721	-0.3	+6.8
Faculty of Medicine	2,365 (59.1%)	1,640 (40.9%)	4,005	2,265 (59.0%)	1,574 (41.0%)	3,839	1,830 (56.5%)	1,408 (43.5%)	3,238	+4.3	+23.7
Desautels Faculty Management	1,340 (50.2%)	1,327 (49.8%)	2,667	1,392 (50.9%)	1,341 (49.1%)	2,733	1,209 (49.9%)	1,215 (50.1%)	2,424	-2.4	+10.0
Schulich School of Music	385 (48.0%)	417 (52.0%)	802	355 (46.6%)	406 (53.4%)	761	378 (52.9%)	336 (47.1%)	714	+5.4	+12.3
Faculty of Religious Studies	37 (39.8%)	56 (60.2%)	93	34 (38.2%)	55 (61.8%)	89	38 (42.2%)	52 (57.8%)	90	+4.5	+3.3
Faculty of Science	2,433 (52.4%)	2,207 (47.6%)	4,640	2,368 (52.7%)	2,124 (47.3%)	4,492	2,520 (55.0%)	2,062 (45.0%)	4,582	+3.3	+1.3
<b>Total</b>	15,456 (56.2%)	12,059 (43.8%)	27,515	15,093 (56.4%)	11,649 (43.6%)	26,742	14,560 (57.0%)	10,972 (43.0%)	25,532	+2.9	+7.8

## Full-Time Enrolment by Faculty, by Degree and by Gender

	Fall 2008			Fall 2007			Fall 2003			% Change (1 Years)	% Change (5 Years)
	Female	Male	Total	Female	Male	Total	Female	Male	Total		
<b>Faculty of Agric Environ Sci</b>											
<b>Undergraduate</b>											
<b>Degrees</b>											
B Eng Bioresource	50 (46.3%)	58 (53.7%)	108	41 (45.6%)	49 (54.4%)	90	0 (0.0%)	0 (0.0%)	0	+20.0	-
B SC (Food Science)	44 (67.7%)	21 (32.3%)	65	31 (73.8%)	11 (26.2%)	42	15 (62.5%)	9 (37.5%)	24	+54.8	+170.8
B SC (Nutritional Science)	315 (94.6%)	18 (5.4%)	333	295 (92.5%)	24 (7.5%)	319	174 (95.6%)	8 (4.4%)	182	+4.4	+83.0
B SC Agricu and Environm Sc	284 (70.1%)	121 (29.9%)	405	273 (69.3%)	121 (30.7%)	394	253 (70.7%)	105 (29.3%)	358	+2.8	+13.1
B SC Agricultural Engineering	0 (0.0%)	0 (0.0%)	0	0 (0.0%)	0 (0.0%)	0	13 (35.1%)	24 (64.9%)	37	0.0	-100.0
<b>Total Degrees</b>	<b>693</b> (76.1%)	<b>218</b> (23.9%)	<b>911</b>	<b>640</b> (75.7%)	<b>205</b> (24.3%)	<b>845</b>	<b>455</b> (75.7%)	<b>146</b> (24.3%)	<b>601</b>	<b>+7.8</b>	<b>+51.6</b>
<b>Certificates, Diplomas</b>											
Cert in Ecological Agriculture	0 (0.0%)	1 (100.0%)	1	0 (0.0%)	0 (0.0%)	0	1 (100.0%)	0 (0.0%)	1	-	0.0
Cert in Food Science	0 (0.0%)	0 (0.0%)	0	3 (100.0%)	0 (0.0%)	3	0 (0.0%)	0 (0.0%)	0	-100.0	0.0
Diploma in Environment	0 (0.0%)	1 (100.0%)	1	3 (75.0%)	1 (25.0%)	4	1 (100.0%)	0 (0.0%)	1	-75.0	0.0
<b>Total Certificates, Diplomas</b>	<b>0</b> (0.0%)	<b>2</b> (100.0%)	<b>2</b>	<b>6</b> (85.7%)	<b>1</b> (14.3%)	<b>7</b>	<b>2</b> (100.0%)	<b>0</b> (0.0%)	<b>2</b>	<b>-71.4</b>	<b>0.0</b>
Special, Visiting, Other	12 (85.7%)	2 (14.3%)	14	13 (72.2%)	5 (27.8%)	18	27 (62.8%)	16 (37.2%)	43	-22.2	-67.4
<b>Total Undergraduate</b>	<b>705</b> (76.1%)	<b>222</b> (23.9%)	<b>927</b>	<b>659</b> (75.7%)	<b>211</b> (24.3%)	<b>870</b>	<b>484</b> (74.9%)	<b>162</b> (25.1%)	<b>646</b>	<b>+6.6</b>	<b>+43.5</b>

## Full-Time Enrolment by Faculty, by Degree and by Gender

	Fall 2008			Fall 2007			Fall 2003			% Change (1 Years)	% Change (5 Years)
	Female	Male	Total	Female	Male	Total	Female	Male	Total		
<b>Graduate</b>											
<b>Masters</b>											
Master of Science	102 (59.0%)	71 (41.0%)	173	109 (62.6%)	65 (37.4%)	174	107 (64.5%)	59 (35.5%)	166	-0.6	+4.2
Master of Science Applied	29 (64.4%)	16 (35.6%)	45	25 (67.6%)	12 (32.4%)	37	8 (88.9%)	1 (11.1%)	9	+21.6	+400.0
<b>Total Masters</b>	<b>131</b> (60.1%)	<b>87</b> (39.9%)	<b>218</b>	<b>134</b> (63.5%)	<b>77</b> (36.5%)	<b>211</b>	<b>115</b> (65.7%)	<b>60</b> (34.3%)	<b>175</b>	<b>+3.3</b>	<b>+24.6</b>
<b>Doctoral</b>											
Doctor of Philosophy	76 (49.7%)	77 (50.3%)	153	67 (49.3%)	69 (50.7%)	136	60 (41.4%)	85 (58.6%)	145	+12.5	+5.5
<b>Total Doctoral</b>	<b>76</b> (49.7%)	<b>77</b> (50.3%)	<b>153</b>	<b>67</b> (49.3%)	<b>69</b> (50.7%)	<b>136</b>	<b>60</b> (41.4%)	<b>85</b> (58.6%)	<b>145</b>	<b>+12.5</b>	<b>+5.5</b>
<b>Total Masters and Doctoral</b>	<b>207</b> (55.8%)	<b>164</b> (44.2%)	<b>371</b>	<b>201</b> (57.9%)	<b>146</b> (42.1%)	<b>347</b>	<b>175</b> (54.7%)	<b>145</b> (45.3%)	<b>320</b>	<b>+6.9</b>	<b>+15.9</b>
<b>Other Graduate</b>											
<b>Certificates, Diplomas</b>											
Gr Cert in Biotechnology	3 (75.0%)	1 (25.0%)	4	2 (100.0%)	0 (0.0%)	2	3 (37.5%)	5 (62.5%)	8	+100.0	-50.0
Gr Dip in Reg Diet (R.D.) Cred	3 (100.0%)	0 (0.0%)	3	1 (100.0%)	0 (0.0%)	1	0 (0.0%)	0 (0.0%)	0	+200.0	-
<b>Total Certificates, Diplomas</b>	<b>6</b> (85.7%)	<b>1</b> (14.3%)	<b>7</b>	<b>3</b> (100.0%)	<b>0</b> (0.0%)	<b>3</b>	<b>3</b> (37.5%)	<b>5</b> (62.5%)	<b>8</b>	<b>+133.3</b>	<b>-12.5</b>
Special, Visiting, Other	0 (0.0%)	0 (0.0%)	0	1 (100.0%)	0 (0.0%)	1	0 (0.0%)	0 (0.0%)	0	-100.0	0.0
<b>Total Other Graduate</b>	<b>6</b> (85.7%)	<b>1</b> (14.3%)	<b>7</b>	<b>4</b> (100.0%)	<b>0</b> (0.0%)	<b>4</b>	<b>3</b> (37.5%)	<b>5</b> (62.5%)	<b>8</b>	<b>+75.0</b>	<b>-12.5</b>
<b>Total Graduate</b>	<b>213</b> (56.3%)	<b>165</b> (43.7%)	<b>378</b>	<b>205</b> (58.4%)	<b>146</b> (41.6%)	<b>351</b>	<b>178</b> (54.3%)	<b>150</b> (45.7%)	<b>328</b>	<b>+7.7</b>	<b>+15.2</b>

## Full-Time Enrolment by Faculty, by Degree and by Gender

	Fall 2008			Fall 2007			Fall 2003			% Change (1 Years)	% Change (5 Years)
	Female	Male	Total	Female	Male	Total	Female	Male	Total		
Postdoctoral	14 (60.9%)	9 (39.1%)	23	9 (37.5%)	15 (62.5%)	24	5 (35.7%)	9 (64.3%)	14	-4.2	+64.3
Farm Management Technology	17 (21.5%)	62 (78.5%)	79	15 (19.0%)	64 (81.0%)	79	13 (20.0%)	52 (80.0%)	65	0.0	+21.5
<b>Total Faculty of Agric Environ Sci</b>	949 (67.4%)	458 (32.6%)	1,407	888 (67.1%)	436 (32.9%)	1,324	680 (64.6%)	373 (35.4%)	1,053	+6.3	+33.6

## Full-Time Enrolment by Faculty, by Degree and by Gender

	Fall 2008			Fall 2007			Fall 2003			% Change (1 Years)	% Change (5 Years)
	Female	Male	Total	Female	Male	Total	Female	Male	Total		
<b>Faculty of Arts</b>											
<b>Undergraduate</b>											
<b>Degrees</b>											
Bachelor of Arts	3,705 (66.9%)	1,832 (33.1%)	5,537	3,648 (67.1%)	1,792 (32.9%)	5,440	3,923 (68.3%)	1,823 (31.7%)	5,746	+1.8	-3.6
Bachelor of Social Work	160 (85.6%)	27 (14.4%)	187	158 (88.3%)	21 (11.7%)	179	171 (84.7%)	31 (15.3%)	202	+4.5	-7.4
<b>Total Degrees</b>	<b>3,865</b> (67.5%)	<b>1,859</b> (32.5%)	<b>5,724</b>	<b>3,806</b> (67.7%)	<b>1,813</b> (32.3%)	<b>5,619</b>	<b>4,094</b> (68.8%)	<b>1,854</b> (31.2%)	<b>5,948</b>	<b>+1.9</b>	<b>-3.8</b>
<b>Certificates, Diplomas</b>											
Diploma in Environment	4 (80.0%)	1 (20.0%)	5	7 (70.0%)	3 (30.0%)	10	5 (71.4%)	2 (28.6%)	7	-50.0	-28.6
<b>Total Certificates, Diplomas</b>	<b>4</b> (80.0%)	<b>1</b> (20.0%)	<b>5</b>	<b>7</b> (70.0%)	<b>3</b> (30.0%)	<b>10</b>	<b>5</b> (71.4%)	<b>2</b> (28.6%)	<b>7</b>	<b>-50.0</b>	<b>-28.6</b>
Special, Visiting, Other	92 (67.2%)	45 (32.8%)	137	85 (64.9%)	46 (35.1%)	131	109 (58.3%)	78 (41.7%)	187	+4.6	-26.7
<b>Total Undergraduate</b>	<b>3,961</b> (67.5%)	<b>1,905</b> (32.5%)	<b>5,866</b>	<b>3,898</b> (67.7%)	<b>1,862</b> (32.3%)	<b>5,760</b>	<b>4,208</b> (68.5%)	<b>1,934</b> (31.5%)	<b>6,142</b>	<b>+1.8</b>	<b>-4.5</b>
<b>Graduate</b>											
<b>Masters</b>											
Master of Arts	162 (63.8%)	92 (36.2%)	254	163 (62.2%)	99 (37.8%)	262	204 (54.8%)	168 (45.2%)	372	-3.1	-31.7
Master of Social Work	58 (81.7%)	13 (18.3%)	71	56 (91.8%)	5 (8.2%)	61	63 (78.8%)	17 (21.3%)	80	+16.4	-11.3
<b>Total Masters</b>	<b>220</b> (67.7%)	<b>105</b> (32.3%)	<b>325</b>	<b>219</b> (67.8%)	<b>104</b> (32.2%)	<b>323</b>	<b>267</b> (59.1%)	<b>185</b> (40.9%)	<b>452</b>	<b>+0.6</b>	<b>-28.1</b>
<b>Doctoral</b>											

## Full-Time Enrolment by Faculty, by Degree and by Gender

	Fall 2008			Fall 2007			Fall 2003			% Change (1 Years)	% Change (5 Years)
	Female	Male	Total	Female	Male	Total	Female	Male	Total		
Doctor of Philosophy	273 (58.2%)	196 (41.8%)	469	253 (56.5%)	195 (43.5%)	448	252 (58.3%)	180 (41.7%)	432	+4.7	+8.6
<b>Total Doctoral</b>	273 (58.2%)	196 (41.8%)	469	253 (56.5%)	195 (43.5%)	448	252 (58.3%)	180 (41.7%)	432	+4.7	+8.6
<b>Total Masters and Doctoral</b>	493 (62.1%)	301 (37.9%)	794	472 (61.2%)	299 (38.8%)	771	519 (58.7%)	365 (41.3%)	884	+3.0	-10.2
<b>Other Graduate</b>											
Special, Visiting, Other	6 (100.0%)	0 (0.0%)	6	0 (0.0%)	1 (100.0%)	1	0 (0.0%)	0 (0.0%)	0	+500.0	-
<b>Total Other Graduate</b>	6 (100.0%)	0 (0.0%)	6	0 (0.0%)	1 (100.0%)	1	0 (0.0%)	0 (0.0%)	0	+500.0	-
<b>Total Graduate</b>	499 (62.4%)	301 (37.6%)	800	472 (61.1%)	300 (38.9%)	772	519 (58.7%)	365 (41.3%)	884	+3.6	-9.5
Postdoctoral	21 (67.7%)	10 (32.3%)	31	17 (70.8%)	7 (29.2%)	24	10 (58.8%)	7 (41.2%)	17	+29.2	+82.4
<b>Total Faculty of Arts</b>	4,481 (66.9%)	2,216 (33.1%)	6,697	4,387 (66.9%)	2,169 (33.1%)	6,556	4,737 (67.3%)	2,306 (32.7%)	7,043	+2.2	-4.9



## Full-Time Enrolment by Faculty, by Degree and by Gender

	Fall 2008			Fall 2007			Fall 2003			% Change (1 Years)	% Change (5 Years)
	Female	Male	Total	Female	Male	Total	Female	Male	Total		
<b>Faculties of Arts and Science</b>											
<b>Undergraduate</b>											
<b>Degrees</b>											
<b>Bachelor of Arts and Science</b>	373 (69.5%)	164 (30.5%)	537	385 (70.3%)	163 (29.7%)	548	0 (0.0%)	0 (0.0%)	0	-2.0	-
<b>Total Degrees</b>	373 (69.5%)	164 (30.5%)	537	385 (70.3%)	163 (29.7%)	548	0 (0.0%)	0 (0.0%)	0	-2.0	-
<b>Total Undergraduate</b>	373 (69.5%)	164 (30.5%)	537	385 (70.3%)	163 (29.7%)	548	0 (0.0%)	0 (0.0%)	0	-2.0	-
<b>Total Faculties of Arts and Science</b>	373 (69.5%)	164 (30.5%)	537	385 (70.3%)	163 (29.7%)	548	0 (0.0%)	0 (0.0%)	0	-2.0	-

## Full-Time Enrolment by Faculty, by Degree and by Gender

	Fall 2008			Fall 2007			Fall 2003			% Change (1 Years)	% Change (5 Years)
	Female	Male	Total	Female	Male	Total	Female	Male	Total		
<b>Centre for Continuing Ed</b>											
<b>Undergraduate</b>											
<b>Certificates, Diplomas</b>											
Cert Prof Engl for Prof Comm	0 (0.0%)	0 (0.0%)	0	1 (100.0%)	0 (0.0%)	1	0 (0.0%)	0 (0.0%)	0	-100.0	0.0
Cert System Analysis & Design	0 (0.0%)	1 (100.0%)	1	0 (0.0%)	2 (100.0%)	2	1 (33.3%)	2 (66.7%)	3	-50.0	-66.7
Cert Transport & Logistics	0 (0.0%)	0 (0.0%)	0	0 (0.0%)	0 (0.0%)	0	1 (25.0%)	3 (75.0%)	4	0.0	-100.0
Cert in Comp Software Tech	0 (0.0%)	0 (0.0%)	0	0 (0.0%)	0 (0.0%)	0	0 (0.0%)	4 (100.0%)	4	0.0	-100.0
Cert in Entrepreneurship	1 (33.3%)	2 (66.7%)	3	0 (0.0%)	0 (0.0%)	0	0 (0.0%)	0 (0.0%)	0	-	-
Cert in Health & Soc Serv Mgmt	2 (100.0%)	0 (0.0%)	2	3 (75.0%)	1 (25.0%)	4	0 (0.0%)	1 (100.0%)	1	-50.0	+100.0
Cert in Human Resources Mgmt	6 (60.0%)	4 (40.0%)	10	6 (85.7%)	1 (14.3%)	7	6 (54.5%)	5 (45.5%)	11	+42.9	-9.1
Cert in Logistics Management	2 (50.0%)	2 (50.0%)	4	2 (100.0%)	0 (0.0%)	2	0 (0.0%)	0 (0.0%)	0	+100.0	-
Cert in Public Relations	12 (92.3%)	1 (7.7%)	13	4 (80.0%)	1 (20.0%)	5	0 (0.0%)	0 (0.0%)	0	+160.0	-
Cert in Public Relations Mgmt	0 (0.0%)	0 (0.0%)	0	1 (50.0%)	1 (50.0%)	2	7 (100.0%)	0 (0.0%)	7	-100.0	-100.0
Cert in Software Development	0 (0.0%)	2 (100.0%)	2	0 (0.0%)	0 (0.0%)	0	0 (0.0%)	0 (0.0%)	0	-	-

## Full-Time Enrolment by Faculty, by Degree and by Gender

	Fall 2008			Fall 2007			Fall 2003			% Change (1 Years)	% Change (5 Years)
	Female	Male	Total	Female	Male	Total	Female	Male	Total		
Certificate in Accounting	3 (18.8%)	13 (81.3%)	16	7 (43.8%)	9 (56.3%)	16	1 (50.0%)	1 (50.0%)	2	0.0	+700.0
Certificate in Management	6 (26.1%)	17 (73.9%)	23	14 (37.8%)	23 (62.2%)	37	19 (36.5%)	33 (63.5%)	52	-37.8	-55.8
Certificate in Marketing	4 (44.4%)	5 (55.6%)	9	2 (40.0%)	3 (60.0%)	5	3 (37.5%)	5 (62.5%)	8	+80.0	+12.5
Certificate in Risk Management	1 (50.0%)	1 (50.0%)	2	1 (50.0%)	1 (50.0%)	2	4 (66.7%)	2 (33.3%)	6	0.0	-66.7
Certificate in Translation	7 (70.0%)	3 (30.0%)	10	14 (63.6%)	8 (36.4%)	22	13 (76.5%)	4 (23.5%)	17	-54.5	-41.2
Certificate in Transportation	0 (0.0%)	0 (0.0%)	0	0 (0.0%)	0 (0.0%)	0	1 (100.0%)	0 (0.0%)	1	0.0	-100.0
<b>Total Certificates, Diplomas</b>	<b>44</b> (46.3%)	<b>51</b> (53.7%)	<b>95</b>	<b>55</b> (52.4%)	<b>50</b> (47.6%)	<b>105</b>	<b>56</b> (48.3%)	<b>60</b> (51.7%)	<b>116</b>	<b>-9.5</b>	<b>-18.1</b>
Special, Visiting, Other	22 (39.3%)	34 (60.7%)	56	18 (30.0%)	42 (70.0%)	60	33 (37.9%)	54 (62.1%)	87	-6.7	-35.6
<b>Total Undergraduate</b>	<b>66</b> (43.7%)	<b>85</b> (56.3%)	<b>151</b>	<b>73</b> (44.2%)	<b>92</b> (55.8%)	<b>165</b>	<b>89</b> (43.8%)	<b>114</b> (56.2%)	<b>203</b>	<b>-8.5</b>	<b>-25.6</b>
<b>Graduate</b>											
Other Graduate											
Certificates, Diplomas											
Dip in Human Resources Mgmt	4 (66.7%)	2 (33.3%)	6	0 (0.0%)	0 (0.0%)	0	0 (0.0%)	0 (0.0%)	0	-	-
Dip in Information Technology	0 (0.0%)	2 (100.0%)	2	0 (0.0%)	0 (0.0%)	0	2 (28.6%)	5 (71.4%)	7	-	-71.4

## Full-Time Enrolment by Faculty, by Degree and by Gender

	Fall 2008			Fall 2007			Fall 2003			% Change (1 Years)	% Change (5 Years)
	Female	Male	Total	Female	Male	Total	Female	Male	Total		
Dip in Pub Relations Mgmt	5 (100.0%)	0 (0.0%)	5	1 (100.0%)	0 (0.0%)	1	0 (0.0%)	0 (0.0%)	0	+400.0	-
Diploma in Accounting	16 (53.3%)	14 (46.7%)	30	17 (51.5%)	16 (48.5%)	33	45 (62.5%)	27 (37.5%)	72	-9.1	-58.3
Diploma in Management	20 (40.0%)	30 (60.0%)	50	22 (46.8%)	25 (53.2%)	47	41 (49.4%)	42 (50.6%)	83	+6.4	-39.8
Grad Cert in Accounting Practi	1 (100.0%)	0 (0.0%)	1	0 (0.0%)	0 (0.0%)	0	0 (0.0%)	0 (0.0%)	0	-	-
Grad Cert in Operations Mgmt	0 (0.0%)	0 (0.0%)	0	1 (33.3%)	2 (66.7%)	3	0 (0.0%)	0 (0.0%)	0	-100.0	0.0
Grad Cert in Treasury/Finance	1 (33.3%)	2 (66.7%)	3	0 (0.0%)	1 (100.0%)	1	1 (50.0%)	1 (50.0%)	2	+200.0	+50.0
Grad Dip in Translation	0 (0.0%)	0 (0.0%)	0	1 (100.0%)	0 (0.0%)	1	4 (100.0%)	0 (0.0%)	4	-100.0	-100.0
Graduate Cert in E-Business	0 (0.0%)	0 (0.0%)	0	0 (0.0%)	1 (100.0%)	1	0 (0.0%)	0 (0.0%)	0	-100.0	0.0
Graduate Cert in Intl Business	0 (0.0%)	0 (0.0%)	0	0 (0.0%)	1 (100.0%)	1	1 (33.3%)	2 (66.7%)	3	-100.0	-100.0
Graduate Cert in Marketing	0 (0.0%)	0 (0.0%)	0	0 (0.0%)	0 (0.0%)	0	1 (100.0%)	0 (0.0%)	1	0.0	-100.0
Graduate Cert in Taxation	0 (0.0%)	0 (0.0%)	0	0 (0.0%)	1 (100.0%)	1	1 (100.0%)	0 (0.0%)	1	-100.0	-100.0
<b>Total Certificates, Diplomas</b>	<b>47</b> (48.5%)	<b>50</b> (51.5%)	<b>97</b>	<b>42</b> (47.2%)	<b>47</b> (52.8%)	<b>89</b>	<b>96</b> (55.5%)	<b>77</b> (44.5%)	<b>173</b>	<b>+9.0</b>	<b>-43.9</b>
Special, Visiting, Other	7 (63.6%)	4 (36.4%)	11	4 (40.0%)	6 (60.0%)	10	22 (44.9%)	27 (55.1%)	49	+10.0	-77.6
<b>Total Other Graduate</b>	<b>54</b> (50.0%)	<b>54</b> (50.0%)	<b>108</b>	<b>46</b> (46.5%)	<b>53</b> (53.5%)	<b>99</b>	<b>118</b> (53.2%)	<b>104</b> (46.8%)	<b>222</b>	<b>+9.1</b>	<b>-51.4</b>
<b>Total Graduate</b>	<b>54</b> (50.0%)	<b>54</b> (50.0%)	<b>108</b>	<b>46</b> (46.5%)	<b>53</b> (53.5%)	<b>99</b>	<b>118</b> (53.2%)	<b>104</b> (46.8%)	<b>222</b>	<b>+9.1</b>	<b>-51.4</b>

## Full-Time Enrolment by Faculty, by Degree and by Gender

	Fall 2008			Fall 2007			Fall 2003			% Change (1 Years)	% Change (5 Years)
	Female	Male	Total	Female	Male	Total	Female	Male	Total		
<b>Other (Non-credit)</b>											
Continuing Education Unit											
Non-Degree	0 (0.0%)	2 (100.0%)	2	0 (0.0%)	0 (0.0%)	0	0 (0.0%)	0 (0.0%)	0	-	-
<b>Total Continuing Education Unit</b>	0 (0.0%)	2 (100.0%)	2	0 (0.0%)	0 (0.0%)	0	0 (0.0%)	0 (0.0%)	0	-	-
<b>Total Other (Non-credit)</b>	0 (0.0%)	2 (100.0%)	2	0 (0.0%)	0 (0.0%)	0	0 (0.0%)	0 (0.0%)	0	-	-
<b>Total Centre for Continuing Ed</b>	120 (46.0%)	141 (54.0%)	261	119 (45.1%)	145 (54.9%)	264	207 (48.7%)	218 (51.3%)	425	-1.1	-38.6

## Full-Time Enrolment by Faculty, by Degree and by Gender

	Fall 2008			Fall 2007			Fall 2003			% Change (1 Years)	% Change (5 Years)
	Female	Male	Total	Female	Male	Total	Female	Male	Total		
<b>Faculty of Dentistry</b>											
<b>Undergraduate</b>											
<b>Degrees</b>											
D M D	77 (60.6%)	50 (39.4%)	127	76 (60.8%)	49 (39.2%)	125	71 (61.7%)	44 (38.3%)	115	+1.6	+10.4
<b>Total Degrees</b>	77 (60.6%)	50 (39.4%)	127	76 (60.8%)	49 (39.2%)	125	71 (61.7%)	44 (38.3%)	115	+1.6	+10.4
<b>Total Undergraduate</b>	77 (60.6%)	50 (39.4%)	127	76 (60.8%)	49 (39.2%)	125	71 (61.7%)	44 (38.3%)	115	+1.6	+10.4
<b>Graduate</b>											
<b>Masters</b>											
Master of Science	7 (43.8%)	9 (56.3%)	16	8 (61.5%)	5 (38.5%)	13	6 (60.0%)	4 (40.0%)	10	+23.1	+60.0
<b>Total Masters</b>	7 (43.8%)	9 (56.3%)	16	8 (61.5%)	5 (38.5%)	13	6 (60.0%)	4 (40.0%)	10	+23.1	+60.0
<b>Doctoral</b>											
Doctor of Philosophy	9 (56.3%)	7 (43.8%)	16	6 (40.0%)	9 (60.0%)	15	2 (100.0%)	0 (0.0%)	2	+6.7	+700.0
<b>Total Doctoral</b>	9 (56.3%)	7 (43.8%)	16	6 (40.0%)	9 (60.0%)	15	2 (100.0%)	0 (0.0%)	2	+6.7	+700.0
<b>Total Masters and Doctoral</b>	16 (50.0%)	16 (50.0%)	32	14 (50.0%)	14 (50.0%)	28	8 (66.7%)	4 (33.3%)	12	+14.3	+166.7
<b>Total Graduate</b>	16 (50.0%)	16 (50.0%)	32	14 (50.0%)	14 (50.0%)	28	8 (66.7%)	4 (33.3%)	12	+14.3	+166.7
Postdoctoral	5 (50.0%)	5 (50.0%)	10	7 (46.7%)	8 (53.3%)	15	1 (100.0%)	0 (0.0%)	1	-33.3	+900.0
<b>Residents and Fellows</b>											

## Full-Time Enrolment by Faculty, by Degree and by Gender

	Fall 2008			Fall 2007			Fall 2003			% Change (1 Years)	% Change (5 Years)
	Female	Male	Total	Female	Male	Total	Female	Male	Total		
Dental Resident	19 (65.5%)	10 (34.5%)	29	15 (51.7%)	14 (48.3%)	29	8 (40.0%)	12 (60.0%)	20	0.0	+45.0
Total Residents and Fellows	19 (65.5%)	10 (34.5%)	29	15 (51.7%)	14 (48.3%)	29	8 (40.0%)	12 (60.0%)	20	0.0	+45.0
Total Faculty of Dentistry	117 (59.1%)	81 (40.9%)	198	112 (56.9%)	85 (43.1%)	197	88 (59.5%)	60 (40.5%)	148	+0.5	+33.8

## Full-Time Enrolment by Faculty, by Degree and by Gender

	Fall 2008			Fall 2007			Fall 2003			% Change (1 Years)	% Change (5 Years)
	Female	Male	Total	Female	Male	Total	Female	Male	Total		
<b>Faculty of Education</b>											
<b>Undergraduate</b>											
<b>Degrees</b>											
B Ed for Certified Teachers	2 (100.0%)	0 (0.0%)	2	1 (100.0%)	0 (0.0%)	1	2 (100.0%)	0 (0.0%)	2	+100.0	0.0
B SC (Kinesiology)	104 (61.5%)	65 (38.5%)	169	98 (63.6%)	56 (36.4%)	154	0 (0.0%)	0 (0.0%)	0	+9.7	-
Bachelor of Education	1,035 (80.5%)	251 (19.5%)	1,286	1,035 (80.7%)	247 (19.3%)	1,282	1,176 (80.6%)	283 (19.4%)	1,459	+0.3	-11.9
<b>Total Degrees</b>	<b>1,141</b> (78.3%)	<b>316</b> (21.7%)	<b>1,457</b>	<b>1,134</b> (78.9%)	<b>303</b> (21.1%)	<b>1,437</b>	<b>1,178</b> (80.6%)	<b>283</b> (19.4%)	<b>1,461</b>	<b>+1.4</b>	<b>-0.3</b>
<b>Certificates, Diplomas</b>											
Cert Aboriginal Literacy Ed	0 (0.0%)	0 (0.0%)	0	0 (0.0%)	0 (0.0%)	0	1 (100.0%)	0 (0.0%)	1	0.0	-100.0
Cert Ed 1st Nations & Inuit	0 (0.0%)	0 (0.0%)	0	0 (0.0%)	0 (0.0%)	0	2 (100.0%)	0 (0.0%)	2	0.0	-100.0
Cert Inclusive Education	3 (100.0%)	0 (0.0%)	3	2 (100.0%)	0 (0.0%)	2	1 (50.0%)	1 (50.0%)	2	+50.0	+50.0
Dip Human Rel & Family Life Ed	0 (0.0%)	0 (0.0%)	0	3 (100.0%)	0 (0.0%)	3	4 (100.0%)	0 (0.0%)	4	-100.0	-100.0
<b>Total Certificates, Diplomas</b>	<b>3</b> (100.0%)	<b>0</b> (0.0%)	<b>3</b>	<b>5</b> (100.0%)	<b>0</b> (0.0%)	<b>5</b>	<b>8</b> (88.9%)	<b>1</b> (11.1%)	<b>9</b>	<b>-40.0</b>	<b>-66.7</b>
Special, Visiting, Other	3 (60.0%)	2 (40.0%)	5	2 (50.0%)	2 (50.0%)	4	7 (70.0%)	3 (30.0%)	10	+25.0	-50.0
<b>Total Undergraduate</b>	<b>1,147</b> (78.3%)	<b>318</b> (21.7%)	<b>1,465</b>	<b>1,141</b> (78.9%)	<b>305</b> (21.1%)	<b>1,446</b>	<b>1,193</b> (80.6%)	<b>287</b> (19.4%)	<b>1,480</b>	<b>+1.3</b>	<b>-1.0</b>
<b>Graduate</b>											



## Full-Time Enrolment by Faculty, by Degree and by Gender

	Fall 2008			Fall 2007			Fall 2003			% Change (1 Years)	% Change (5 Years)
	Female	Male	Total	Female	Male	Total	Female	Male	Total		
<b>Masters</b>											
Master of Arts	142 (78.5%)	39 (21.5%)	181	123 (82.6%)	26 (17.4%)	149	118 (80.3%)	29 (19.7%)	147	+21.5	+23.1
Master of Education	17 (85.0%)	3 (15.0%)	20	26 (89.7%)	3 (10.3%)	29	28 (90.3%)	3 (9.7%)	31	-31.0	-35.5
Master of Library & Info St	94 (75.2%)	31 (24.8%)	125	87 (75.0%)	29 (25.0%)	116	90 (72.6%)	34 (27.4%)	124	+7.8	+0.8
Master of Science	9 (45.0%)	11 (55.0%)	20	12 (60.0%)	8 (40.0%)	20	7 (43.8%)	9 (56.3%)	16	0.0	+25.0
<b>Total Masters</b>	<b>262</b> (75.7%)	<b>84</b> (24.3%)	<b>346</b>	<b>248</b> (79.0%)	<b>66</b> (21.0%)	<b>314</b>	<b>243</b> (76.4%)	<b>75</b> (23.6%)	<b>318</b>	<b>+10.2</b>	<b>+8.8</b>
<b>Doctoral</b>											
Doctor of Philosophy	177 (76.3%)	55 (23.7%)	232	163 (78.0%)	46 (22.0%)	209	137 (74.9%)	46 (25.1%)	183	+11.0	+26.8
<b>Total Doctoral</b>	<b>177</b> (76.3%)	<b>55</b> (23.7%)	<b>232</b>	<b>163</b> (78.0%)	<b>46</b> (22.0%)	<b>209</b>	<b>137</b> (74.9%)	<b>46</b> (25.1%)	<b>183</b>	<b>+11.0</b>	<b>+26.8</b>
<b>Total Masters and Doctoral</b>	<b>439</b> (76.0%)	<b>139</b> (24.0%)	<b>578</b>	<b>411</b> (78.6%)	<b>112</b> (21.4%)	<b>523</b>	<b>380</b> (75.8%)	<b>121</b> (24.2%)	<b>501</b>	<b>+10.5</b>	<b>+15.4</b>
<b>Other Graduate</b>											
<b>Certificates, Diplomas</b>											
Gr Cert Educational Leadersh 1	0 (0.0%)	3 (100.0%)	3	0 (0.0%)	0 (0.0%)	0	0 (0.0%)	0 (0.0%)	0	-	-
Gr Cert Educational Leadersh 2	0 (0.0%)	0 (0.0%)	0	1 (100.0%)	0 (0.0%)	1	0 (0.0%)	0 (0.0%)	0	-100.0	0.0
Gr Cert Teaching ESL	1 (100.0%)	0 (0.0%)	1	0 (0.0%)	0 (0.0%)	0	0 (0.0%)	0 (0.0%)	0	-	-

## Full-Time Enrolment by Faculty, by Degree and by Gender

	Fall 2008			Fall 2007			Fall 2003			% Change (1 Years)	% Change (5 Years)
	Female	Male	Total	Female	Male	Total	Female	Male	Total		
Gr Dip in Library & Info St	0 (0.0%)	0 (0.0%)	0	0 (0.0%)	1 (100.0%)	1	0 (0.0%)	0 (0.0%)	0	-100.0	0.0
Total Certificates, Diplomas	1 (25.0%)	3 (75.0%)	4	1 (50.0%)	1 (50.0%)	2	0 (0.0%)	0 (0.0%)	0	+100.0	-
Total Other Graduate	1 (25.0%)	3 (75.0%)	4	1 (50.0%)	1 (50.0%)	2	0 (0.0%)	0 (0.0%)	0	+100.0	-
Total Graduate	440 (75.6%)	142 (24.4%)	582	412 (78.5%)	113 (21.5%)	525	380 (75.8%)	121 (24.2%)	501	+10.9	+16.2
Postdoctoral	3 (42.9%)	4 (57.1%)	7	0 (0.0%)	0 (0.0%)	0	1 (50.0%)	1 (50.0%)	2	-	+250.0
Total Faculty of Education	1,590 (77.4%)	464 (22.6%)	2,054	1,553 (78.8%)	418 (21.2%)	1,971	1,574 (79.4%)	409 (20.6%)	1,983	+4.2	+3.6

## Full-Time Enrolment by Faculty, by Degree and by Gender

	Fall 2008			Fall 2007			Fall 2003			% Change (1 Years)	% Change (5 Years)
	Female	Male	Total	Female	Male	Total	Female	Male	Total		
<b>Faculty of Engineering</b>											
<b>Undergraduate</b>											
<b>Degrees</b>											
Bachelor of Engineering	445 (20.1%)	1,765 (79.9%)	2,210	449 (21.0%)	1,686 (79.0%)	2,135	500 (25.7%)	1,442 (74.3%)	1,942	+3.5	+13.8
Bachelor of Science (Arch)	121 (69.9%)	52 (30.1%)	173	114 (67.1%)	56 (32.9%)	170	94 (64.8%)	51 (35.2%)	145	+1.8	+19.3
Bachelor of Software Engr	16 (16.7%)	80 (83.3%)	96	23 (24.5%)	71 (75.5%)	94	13 (31.7%)	28 (68.3%)	41	+2.1	+134.1
<b>Total Degrees</b>	<b>582</b> (23.5%)	<b>1,897</b> (76.5%)	<b>2,479</b>	<b>586</b> (24.4%)	<b>1,813</b> (75.6%)	<b>2,399</b>	<b>607</b> (28.5%)	<b>1,521</b> (71.5%)	<b>2,128</b>	<b>+3.3</b>	<b>+16.5</b>
Special, Visiting, Other	17 (45.9%)	20 (54.1%)	37	18 (37.5%)	30 (62.5%)	48	27 (46.6%)	31 (53.4%)	58	-22.9	-36.2
<b>Total Undergraduate</b>	<b>599</b> (23.8%)	<b>1,917</b> (76.2%)	<b>2,516</b>	<b>604</b> (24.7%)	<b>1,843</b> (75.3%)	<b>2,447</b>	<b>634</b> (29.0%)	<b>1,552</b> (71.0%)	<b>2,186</b>	<b>+2.8</b>	<b>+15.1</b>
<b>Graduate</b>											
<b>Masters</b>											
Master of Architecture	48 (56.5%)	37 (43.5%)	85	41 (59.4%)	28 (40.6%)	69	76 (58.9%)	53 (41.1%)	129	+23.2	-34.1
Master of Engineering	63 (23.2%)	208 (76.8%)	271	63 (23.4%)	206 (76.6%)	269	97 (24.6%)	297 (75.4%)	394	+0.7	-31.2
Master of Science	1 (100.0%)	0 (0.0%)	1	1 (100.0%)	0 (0.0%)	1	0 (0.0%)	8 (100.0%)	8	0.0	-87.5
Master of Urban Planning	26 (52.0%)	24 (48.0%)	50	22 (53.7%)	19 (46.3%)	41	21 (52.5%)	19 (47.5%)	40	+22.0	+25.0
<b>Total Masters</b>	<b>138</b> (33.9%)	<b>269</b> (66.1%)	<b>407</b>	<b>127</b> (33.4%)	<b>253</b> (66.6%)	<b>380</b>	<b>194</b> (34.0%)	<b>377</b> (66.0%)	<b>571</b>	<b>+7.1</b>	<b>-28.7</b>

## Full-Time Enrolment by Faculty, by Degree and by Gender

	Fall 2008			Fall 2007			Fall 2003			% Change (1 Years)	% Change (5 Years)
	Female	Male	Total	Female	Male	Total	Female	Male	Total		
<b>Doctoral</b>											
<b>Doctor of Philosophy</b>	100 (23.5%)	326 (76.5%)	426	75 (22.0%)	266 (78.0%)	341	60 (19.7%)	245 (80.3%)	305	+24.9	+39.7
<b>Total Doctoral</b>	100 (23.5%)	326 (76.5%)	426	75 (22.0%)	266 (78.0%)	341	60 (19.7%)	245 (80.3%)	305	+24.9	+39.7
<b>Total Masters and Doctoral</b>	238 (28.6%)	595 (71.4%)	833	202 (28.0%)	519 (72.0%)	721	254 (29.0%)	622 (71.0%)	876	+15.5	-4.9
<b>Other Graduate</b>											
<b>Special, Visiting, Other</b>	0 (0.0%)	2 (100.0%)	2	0 (0.0%)	2 (100.0%)	2	9 (50.0%)	9 (50.0%)	18	0.0	-88.9
<b>Total Other Graduate</b>	0 (0.0%)	2 (100.0%)	2	0 (0.0%)	2 (100.0%)	2	9 (50.0%)	9 (50.0%)	18	0.0	-88.9
<b>Total Graduate</b>	238 (28.5%)	597 (71.5%)	835	202 (27.9%)	521 (72.1%)	723	263 (29.4%)	631 (70.6%)	894	+15.5	-6.6
<b>Postdoctoral</b>	8 (24.2%)	25 (75.8%)	33	8 (30.8%)	18 (69.2%)	26	8 (25.8%)	23 (74.2%)	31	+26.9	+6.5
<b>Total Faculty of Engineering</b>	845 (25.0%)	2,539 (75.0%)	3,384	814 (25.5%)	2,382 (74.5%)	3,196	905 (29.1%)	2,206 (70.9%)	3,111	+5.9	+8.8

## Full-Time Enrolment by Faculty, by Degree and by Gender

	Fall 2008			Fall 2007			Fall 2003			% Change (1 Years)	% Change (5 Years)
	Female	Male	Total	Female	Male	Total	Female	Male	Total		
<b>Faculty of Law</b>											
<b>Undergraduate</b>											
<b>Degrees</b>											
Bach of Civil Law Bach of Laws	330 (54.5%)	275 (45.5%)	605	335 (55.4%)	270 (44.6%)	605	306 (55.0%)	250 (45.0%)	556	0.0	+8.8
<b>Total Degrees</b>	<b>330</b> (54.5%)	<b>275</b> (45.5%)	<b>605</b>	<b>335</b> (55.4%)	<b>270</b> (44.6%)	<b>605</b>	<b>306</b> (55.0%)	<b>250</b> (45.0%)	<b>556</b>	<b>0.0</b>	<b>+8.8</b>
Special, Visiting, Other	24 (75.0%)	8 (25.0%)	32	19 (65.5%)	10 (34.5%)	29	24 (80.0%)	6 (20.0%)	30	+10.3	+6.7
<b>Total Undergraduate</b>	<b>354</b> (55.6%)	<b>283</b> (44.4%)	<b>637</b>	<b>354</b> (55.8%)	<b>280</b> (44.2%)	<b>634</b>	<b>330</b> (56.3%)	<b>256</b> (43.7%)	<b>586</b>	<b>+0.5</b>	<b>+8.7</b>
<b>Graduate</b>											
<b>Masters</b>											
Master of Laws	44 (54.3%)	37 (45.7%)	81	42 (50.0%)	42 (50.0%)	84	49 (48.0%)	53 (52.0%)	102	-3.6	-20.6
<b>Total Masters</b>	<b>44</b> (54.3%)	<b>37</b> (45.7%)	<b>81</b>	<b>42</b> (50.0%)	<b>42</b> (50.0%)	<b>84</b>	<b>49</b> (48.0%)	<b>53</b> (52.0%)	<b>102</b>	<b>-3.6</b>	<b>-20.6</b>
<b>Doctoral</b>											
Doctor of Civil Law	22 (44.0%)	28 (56.0%)	50	23 (47.9%)	25 (52.1%)	48	14 (48.3%)	15 (51.7%)	29	+4.2	+72.4
<b>Total Doctoral</b>	<b>22</b> (44.0%)	<b>28</b> (56.0%)	<b>50</b>	<b>23</b> (47.9%)	<b>25</b> (52.1%)	<b>48</b>	<b>14</b> (48.3%)	<b>15</b> (51.7%)	<b>29</b>	<b>+4.2</b>	<b>+72.4</b>
<b>Total Masters and Doctoral</b>	<b>66</b> (50.4%)	<b>65</b> (49.6%)	<b>131</b>	<b>65</b> (49.2%)	<b>67</b> (50.8%)	<b>132</b>	<b>63</b> (48.1%)	<b>68</b> (51.9%)	<b>131</b>	<b>-0.8</b>	<b>0.0</b>
<b>Other Graduate</b>											
<b>Certificates, Diplomas</b>											

## Full-Time Enrolment by Faculty, by Degree and by Gender

	Fall 2008			Fall 2007			Fall 2003			% Change (1 Years)	% Change (5 Years)
	Female	Male	Total	Female	Male	Total	Female	Male	Total		
Gr Cert Air and Space Law	1 (100.0%)	0 (0.0%)	1	1 (25.0%)	3 (75.0%)	4	1 (33.3%)	2 (66.7%)	3	-75.0	-66.7
Gr Cert in Comparative Law	0 (0.0%)	0 (0.0%)	0	0 (0.0%)	0 (0.0%)	0	0 (0.0%)	1 (100.0%)	1	0.0	-100.0
Total Certificates, Diplomas	1 (100.0%)	0 (0.0%)	1	1 (25.0%)	3 (75.0%)	4	1 (25.0%)	3 (75.0%)	4	-75.0	-75.0
Total Other Graduate	1 (100.0%)	0 (0.0%)	1	1 (25.0%)	3 (75.0%)	4	1 (25.0%)	3 (75.0%)	4	-75.0	-75.0
Total Graduate	67 (50.8%)	65 (49.2%)	132	66 (48.5%)	70 (51.5%)	136	64 (47.4%)	71 (52.6%)	135	-2.9	-2.2
Postdoctoral	0 (0.0%)	1 (100.0%)	1	1 (50.0%)	1 (50.0%)	2	0 (0.0%)	0 (0.0%)	0	-50.0	-
Total Faculty of Law	421 (54.7%)	349 (45.3%)	770	421 (54.5%)	351 (45.5%)	772	394 (54.6%)	327 (45.4%)	721	-0.3	+6.8

## Full-Time Enrolment by Faculty, by Degree and by Gender

	Fall 2008			Fall 2007			Fall 2003			% Change (1 Years)	% Change (5 Years)
	Female	Male	Total	Female	Male	Total	Female	Male	Total		
<b>Faculty of Medicine</b>											
<b>Undergraduate</b>											
<b>Degrees</b>											
B SC (Occ Ther-Non Practing)	77 (86.5%)	12 (13.5%)	89	38 (80.9%)	9 (19.1%)	47	0 (0.0%)	0 (0.0%)	0	+89.4	-
B SC (Occupational Therapy)	48 (84.2%)	9 (15.8%)	57	98 (89.9%)	11 (10.1%)	109	129 (91.5%)	12 (8.5%)	141	-47.7	-59.6
B SC (Phy Ther-Non Practicing)	81 (65.9%)	42 (34.1%)	123	51 (77.3%)	15 (22.7%)	66	0 (0.0%)	0 (0.0%)	0	+86.4	-
B SC (Physical Therapy)	42 (79.2%)	11 (20.8%)	53	81 (78.6%)	22 (21.4%)	103	131 (80.9%)	31 (19.1%)	162	-48.5	-67.3
Bachelor of Nursing	94 (92.2%)	8 (7.8%)	102	108 (94.7%)	6 (5.3%)	114	13 (100.0%)	0 (0.0%)	13	-10.5	+684.6
Bachelor of Science (Nursing)	194 (89.4%)	23 (10.6%)	217	165 (91.2%)	16 (8.8%)	181	136 (91.3%)	13 (8.7%)	149	+19.9	+45.6
MDCM	382 (55.0%)	313 (45.0%)	695	380 (55.2%)	308 (44.8%)	688	293 (50.6%)	286 (49.4%)	579	+1.0	+20.0
<b>Total Degrees</b>	<b>918</b> (68.7%)	<b>418</b> (31.3%)	<b>1,336</b>	<b>921</b> (70.4%)	<b>387</b> (29.6%)	<b>1,308</b>	<b>702</b> (67.2%)	<b>342</b> (32.8%)	<b>1,044</b>	<b>+2.1</b>	<b>+28.0</b>
Special, Visiting, Other	0 (0.0%)	0 (0.0%)	0	1 (50.0%)	1 (50.0%)	2	0 (0.0%)	0 (0.0%)	0	-100.0	0.0
<b>Total Undergraduate</b>	<b>918</b> (68.7%)	<b>418</b> (31.3%)	<b>1,336</b>	<b>922</b> (70.4%)	<b>388</b> (29.6%)	<b>1,310</b>	<b>702</b> (67.2%)	<b>342</b> (32.8%)	<b>1,044</b>	<b>+2.0</b>	<b>+28.0</b>
<b>Graduate</b>											
<b>Masters</b>											

## Full-Time Enrolment by Faculty, by Degree and by Gender

	Fall 2008			Fall 2007			Fall 2003			% Change (1 Years)	% Change (5 Years)
	Female	Male	Total	Female	Male	Total	Female	Male	Total		
Master of Engineering	9 (52.9%)	8 (47.1%)	17	10 (47.6%)	11 (52.4%)	21	18 (46.2%)	21 (53.8%)	39	-19.0	-56.4
Master of Science	302 (62.0%)	185 (38.0%)	487	288 (61.7%)	179 (38.3%)	467	245 (59.3%)	168 (40.7%)	413	+4.3	+17.9
Master of Science Applied	176 (85.9%)	29 (14.1%)	205	130 (85.5%)	22 (14.5%)	152	93 (93.9%)	6 (6.1%)	99	+34.9	+107.1
<b>Total Masters</b>	<b>487</b> (68.7%)	<b>222</b> (31.3%)	<b>709</b>	<b>428</b> (66.9%)	<b>212</b> (33.1%)	<b>640</b>	<b>356</b> (64.6%)	<b>195</b> (35.4%)	<b>551</b>	<b>+10.8</b>	<b>+28.7</b>
<b>Doctoral</b>											
Doctor of Philosophy	391 (57.0%)	295 (43.0%)	686	385 (56.7%)	294 (43.3%)	679	339 (56.0%)	266 (44.0%)	605	+1.0	+13.4
<b>Total Doctoral</b>	<b>391</b> (57.0%)	<b>295</b> (43.0%)	<b>686</b>	<b>385</b> (56.7%)	<b>294</b> (43.3%)	<b>679</b>	<b>339</b> (56.0%)	<b>266</b> (44.0%)	<b>605</b>	<b>+1.0</b>	<b>+13.4</b>
<b>Total Masters and Doctoral</b>	<b>878</b> (62.9%)	<b>517</b> (37.1%)	<b>1,395</b>	<b>813</b> (61.6%)	<b>506</b> (38.4%)	<b>1,319</b>	<b>695</b> (60.1%)	<b>461</b> (39.9%)	<b>1,156</b>	<b>+5.8</b>	<b>+20.7</b>
<b>Other Graduate</b>											
<b>Certificates, Diplomas</b>											
Gr Dip in Clinical Research	2 (66.7%)	1 (33.3%)	3	2 (66.7%)	1 (33.3%)	3	0 (0.0%)	1 (100.0%)	1	0.0	+200.0
Gr Dip in Epidemiol & Health	0 (0.0%)	0 (0.0%)	0	0 (0.0%)	0 (0.0%)	0	1 (100.0%)	0 (0.0%)	1	0.0	-100.0
<b>Total Certificates, Diplomas</b>	<b>2</b> (66.7%)	<b>1</b> (33.3%)	<b>3</b>	<b>2</b> (66.7%)	<b>1</b> (33.3%)	<b>3</b>	<b>1</b> (50.0%)	<b>1</b> (50.0%)	<b>2</b>	<b>0.0</b>	<b>+50.0</b>
Special, Visiting, Other	2 (50.0%)	2 (50.0%)	4	1 (33.3%)	2 (66.7%)	3	0 (0.0%)	0 (0.0%)	0	+33.3	-
<b>Total Other Graduate</b>	<b>4</b> (57.1%)	<b>3</b> (42.9%)	<b>7</b>	<b>3</b> (50.0%)	<b>3</b> (50.0%)	<b>6</b>	<b>1</b> (50.0%)	<b>1</b> (50.0%)	<b>2</b>	<b>+16.7</b>	<b>+250.0</b>
<b>Total Graduate</b>	<b>882</b> (62.9%)	<b>520</b> (37.1%)	<b>1,402</b>	<b>816</b> (61.6%)	<b>509</b> (38.4%)	<b>1,325</b>	<b>696</b> (60.1%)	<b>462</b> (39.9%)	<b>1,158</b>	<b>+5.8</b>	<b>+21.1</b>



## Full-Time Enrolment by Faculty, by Degree and by Gender

	Fall 2008			Fall 2007			Fall 2003			% Change (1 Years)	% Change (5 Years)
	Female	Male	Total	Female	Male	Total	Female	Male	Total		
Postdoctoral	150 (47.5%)	166 (52.5%)	316	136 (46.9%)	154 (53.1%)	290	132 (53.0%)	117 (47.0%)	249	+9.0	+26.9
<b>Residents and Fellows</b>											
Clinical Fellow	84 (27.4%)	223 (72.6%)	307	92 (29.3%)	222 (70.7%)	314	71 (28.3%)	180 (71.7%)	251	-2.2	+22.3
Clinical/Research Fellow	4 (44.4%)	5 (55.6%)	9	2 (28.6%)	5 (71.4%)	7	0 (0.0%)	0 (0.0%)	0	+28.6	-
Medical Resident	327 (51.5%)	308 (48.5%)	635	297 (50.1%)	296 (49.9%)	593	229 (42.7%)	307 (57.3%)	536	+7.1	+18.5
<b>Total Residents and Fellows</b>	<b>415</b> (43.6%)	<b>536</b> (56.4%)	<b>951</b>	<b>391</b> (42.8%)	<b>523</b> (57.2%)	<b>914</b>	<b>300</b> (38.1%)	<b>487</b> (61.9%)	<b>787</b>	<b>+4.0</b>	<b>+20.8</b>
<b>Total Faculty of Medicine</b>	<b>2,365</b> (59.1%)	<b>1,640</b> (40.9%)	<b>4,005</b>	<b>2,265</b> (59.0%)	<b>1,574</b> (41.0%)	<b>3,839</b>	<b>1,830</b> (56.5%)	<b>1,408</b> (43.5%)	<b>3,238</b>	<b>+4.3</b>	<b>+23.7</b>

## Full-Time Enrolment by Faculty, by Degree and by Gender

	Fall 2008			Fall 2007			Fall 2003			% Change (1 Years)	% Change (5 Years)
	Female	Male	Total	Female	Male	Total	Female	Male	Total		
<b>Desautels Faculty Management</b>											
<b>Undergraduate</b>											
<b>Degrees</b>											
Bachelor of Commerce	1,198 (52.2%)	1,096 (47.8%)	2,294	1,253 (52.9%)	1,117 (47.1%)	2,370	1,054 (53.9%)	902 (46.1%)	1,956	-3.2	+17.3
<b>Total Degrees</b>	1,198 (52.2%)	1,096 (47.8%)	2,294	1,253 (52.9%)	1,117 (47.1%)	2,370	1,054 (53.9%)	902 (46.1%)	1,956	-3.2	+17.3
Special, Visiting, Other	42 (47.7%)	46 (52.3%)	88	31 (47.0%)	35 (53.0%)	66	25 (53.2%)	22 (46.8%)	47	+33.3	+87.2
<b>Total Undergraduate</b>	1,240 (52.1%)	1,142 (47.9%)	2,382	1,284 (52.7%)	1,152 (47.3%)	2,436	1,079 (53.9%)	924 (46.1%)	2,003	-2.2	+18.9
<b>Graduate</b>											
<b>Masters</b>											
Master of Business Admin	63 (36.2%)	111 (63.8%)	174	69 (37.7%)	114 (62.3%)	183	88 (28.3%)	223 (71.7%)	311	-4.9	-44.1
Master of Management	1 (12.5%)	7 (87.5%)	8	4 (40.0%)	6 (60.0%)	10	3 (20.0%)	12 (80.0%)	15	-20.0	-46.7
<b>Total Masters</b>	64 (35.2%)	118 (64.8%)	182	73 (37.8%)	120 (62.2%)	193	91 (27.9%)	235 (72.1%)	326	-5.7	-44.2
<b>Doctoral</b>											
Doctor of Philosophy	27 (33.8%)	53 (66.3%)	80	29 (36.7%)	50 (63.3%)	79	25 (37.3%)	42 (62.7%)	67	+1.3	+19.4
<b>Total Doctoral</b>	27 (33.8%)	53 (66.3%)	80	29 (36.7%)	50 (63.3%)	79	25 (37.3%)	42 (62.7%)	67	+1.3	+19.4
<b>Total Masters and Doctoral</b>	91 (34.7%)	171 (65.3%)	262	102 (37.5%)	170 (62.5%)	272	116 (29.5%)	277 (70.5%)	393	-3.7	-33.3
<b>Other Graduate</b>											
Certificates, Diplomas											

## Full-Time Enrolment by Faculty, by Degree and by Gender

	Fall 2008			Fall 2007			Fall 2003			% Change (1 Years)	% Change (5 Years)
	Female	Male	Total	Female	Male	Total	Female	Male	Total		
Gr Dip in Public Accountancy	1 (50.0%)	1 (50.0%)	2	1 (25.0%)	3 (75.0%)	4	1 (100.0%)	0 (0.0%)	1	-50.0	+100.0
Post MBA Gr Cert	0 (0.0%)	2 (100.0%)	2	0 (0.0%)	1 (100.0%)	1	1 (33.3%)	2 (66.7%)	3	+100.0	-33.3
<b>Total Certificates, Diplomas</b>	1 (25.0%)	3 (75.0%)	4	1 (20.0%)	4 (80.0%)	5	2 (50.0%)	2 (50.0%)	4	-20.0	0.0
Special, Visiting, Other	7 (46.7%)	8 (53.3%)	15	4 (22.2%)	14 (77.8%)	18	10 (47.6%)	11 (52.4%)	21	-16.7	-28.6
<b>Total Other Graduate</b>	8 (42.1%)	11 (57.9%)	19	5 (21.7%)	18 (78.3%)	23	12 (48.0%)	13 (52.0%)	25	-17.4	-24.0
<b>Total Graduate</b>	99 (35.2%)	182 (64.8%)	281	107 (36.3%)	188 (63.7%)	295	128 (30.6%)	290 (69.4%)	418	-4.7	-32.8
Postdoctoral	1 (25.0%)	3 (75.0%)	4	1 (50.0%)	1 (50.0%)	2	2 (66.7%)	1 (33.3%)	3	+100.0	+33.3
<b>Total Desautels Faculty Management</b>	1,340 (50.2%)	1,327 (49.8%)	2,667	1,392 (50.9%)	1,341 (49.1%)	2,733	1,209 (49.9%)	1,215 (50.1%)	2,424	-2.4	+10.0

## Full-Time Enrolment by Faculty, by Degree and by Gender

	Fall 2008			Fall 2007			Fall 2003			% Change (1 Years)	% Change (5 Years)
	Female	Male	Total	Female	Male	Total	Female	Male	Total		
<b>Schulich School of Music</b>											
<b>Undergraduate</b>											
<b>Degrees</b>											
Bachelor of Music	229 (48.2%)	246 (51.8%)	475	219 (47.7%)	240 (52.3%)	459	245 (52.8%)	219 (47.2%)	464	+3.5	+2.4
Licentiate in Music	13 (72.2%)	5 (27.8%)	18	11 (55.0%)	9 (45.0%)	20	21 (65.6%)	11 (34.4%)	32	-10.0	-43.8
<b>Total Degrees</b>	<b>242</b> (49.1%)	<b>251</b> (50.9%)	<b>493</b>	<b>230</b> (48.0%)	<b>249</b> (52.0%)	<b>479</b>	<b>266</b> (53.6%)	<b>230</b> (46.4%)	<b>496</b>	<b>+2.9</b>	<b>-0.6</b>
<b>Certificates, Diplomas</b>											
Artist Diploma	8 (57.1%)	6 (42.9%)	14	6 (75.0%)	2 (25.0%)	8	13 (61.9%)	8 (38.1%)	21	+75.0	-33.3
<b>Total Certificates, Diplomas</b>	<b>8</b> (57.1%)	<b>6</b> (42.9%)	<b>14</b>	<b>6</b> (75.0%)	<b>2</b> (25.0%)	<b>8</b>	<b>13</b> (61.9%)	<b>8</b> (38.1%)	<b>21</b>	<b>+75.0</b>	<b>-33.3</b>
Special, Visiting, Other	3 (23.1%)	10 (76.9%)	13	2 (25.0%)	6 (75.0%)	8	2 (25.0%)	6 (75.0%)	8	+62.5	+62.5
<b>Total Undergraduate</b>	<b>253</b> (48.7%)	<b>267</b> (51.3%)	<b>520</b>	<b>238</b> (48.1%)	<b>257</b> (51.9%)	<b>495</b>	<b>281</b> (53.5%)	<b>244</b> (46.5%)	<b>525</b>	<b>+5.1</b>	<b>-1.0</b>
<b>Graduate</b>											
<b>Masters</b>											
Master of Arts	14 (45.2%)	17 (54.8%)	31	12 (40.0%)	18 (60.0%)	30	13 (48.1%)	14 (51.9%)	27	+3.3	+14.8
Master of Music	81 (55.5%)	65 (44.5%)	146	73 (52.1%)	67 (47.9%)	140	53 (48.2%)	57 (51.8%)	110	+4.3	+32.7
<b>Total Masters</b>	<b>95</b> (53.7%)	<b>82</b> (46.3%)	<b>177</b>	<b>85</b> (50.0%)	<b>85</b> (50.0%)	<b>170</b>	<b>66</b> (48.2%)	<b>71</b> (51.8%)	<b>137</b>	<b>+4.1</b>	<b>+29.2</b>
<b>Doctoral</b>											

## Full-Time Enrolment by Faculty, by Degree and by Gender

	Fall 2008			Fall 2007			Fall 2003			% Change (1 Years)	% Change (5 Years)
	Female	Male	Total	Female	Male	Total	Female	Male	Total		
Doctor of Music	18 (47.4%)	20 (52.6%)	38	16 (42.1%)	22 (57.9%)	38	13 (52.0%)	12 (48.0%)	25	0.0	+52.0
Doctor of Philosophy	19 (30.2%)	44 (69.8%)	63	16 (30.2%)	37 (69.8%)	53	18 (66.7%)	9 (33.3%)	27	+18.9	+133.3
<b>Total Doctoral</b>	<b>37</b> (36.6%)	<b>64</b> (63.4%)	<b>101</b>	<b>32</b> (35.2%)	<b>59</b> (64.8%)	<b>91</b>	<b>31</b> (59.6%)	<b>21</b> (40.4%)	<b>52</b>	<b>+11.0</b>	<b>+94.2</b>
<b>Total Masters and Doctoral</b>	<b>132</b> (47.5%)	<b>146</b> (52.5%)	<b>278</b>	<b>117</b> (44.8%)	<b>144</b> (55.2%)	<b>261</b>	<b>97</b> (51.3%)	<b>92</b> (48.7%)	<b>189</b>	<b>+6.5</b>	<b>+47.1</b>
<b>Other Graduate</b>											
Special, Visiting, Other	0 (0.0%)	2 (100.0%)	2	0 (0.0%)	0 (0.0%)	0	0 (0.0%)	0 (0.0%)	0	-	-
<b>Total Other Graduate</b>	<b>0</b> (0.0%)	<b>2</b> (100.0%)	<b>2</b>	<b>0</b> (0.0%)	<b>0</b> (0.0%)	<b>0</b>	<b>0</b> (0.0%)	<b>0</b> (0.0%)	<b>0</b>	<b>-</b>	<b>-</b>
<b>Total Graduate</b>	<b>132</b> (47.1%)	<b>148</b> (52.9%)	<b>280</b>	<b>117</b> (44.8%)	<b>144</b> (55.2%)	<b>261</b>	<b>97</b> (51.3%)	<b>92</b> (48.7%)	<b>189</b>	<b>+7.3</b>	<b>+48.1</b>
Postdoctoral	0 (0.0%)	2 (100.0%)	2	0 (0.0%)	5 (100.0%)	5	0 (0.0%)	0 (0.0%)	0	-60.0	-
<b>Total Schulich School of Music</b>	<b>385</b> (48.0%)	<b>417</b> (52.0%)	<b>802</b>	<b>355</b> (46.6%)	<b>406</b> (53.4%)	<b>761</b>	<b>378</b> (52.9%)	<b>336</b> (47.1%)	<b>714</b>	<b>+5.4</b>	<b>+12.3</b>

## Full-Time Enrolment by Faculty, by Degree and by Gender

	Fall 2008			Fall 2007			Fall 2003			% Change (1 Years)	% Change (5 Years)
	Female	Male	Total	Female	Male	Total	Female	Male	Total		
<b>Faculty of Religious Studies</b>											
<b>Undergraduate</b>											
<b>Degrees</b>											
Bachelor of Theology	9 (45.0%)	11 (55.0%)	20	11 (40.7%)	16 (59.3%)	27	11 (47.8%)	12 (52.2%)	23	-25.9	-13.0
<b>Total Degrees</b>	9 (45.0%)	11 (55.0%)	20	11 (40.7%)	16 (59.3%)	27	11 (47.8%)	12 (52.2%)	23	-25.9	-13.0
Special, Visiting, Other	0 (0.0%)	1 (100.0%)	1	2 (100.0%)	0 (0.0%)	2	0 (0.0%)	2 (100.0%)	2	-50.0	-50.0
<b>Total Undergraduate</b>	9 (42.9%)	12 (57.1%)	21	13 (44.8%)	16 (55.2%)	29	11 (44.0%)	14 (56.0%)	25	-27.6	-16.0
<b>Graduate</b>											
<b>Masters</b>											
Master of Arts	14 (48.3%)	15 (51.7%)	29	8 (33.3%)	16 (66.7%)	24	16 (47.1%)	18 (52.9%)	34	+20.8	-14.7
Master of Sacred Theology	0 (0.0%)	0 (0.0%)	0	0 (0.0%)	0 (0.0%)	0	1 (100.0%)	0 (0.0%)	1	0.0	-100.0
<b>Total Masters</b>	14 (48.3%)	15 (51.7%)	29	8 (33.3%)	16 (66.7%)	24	17 (48.6%)	18 (51.4%)	35	+20.8	-17.1
<b>Doctoral</b>											
Doctor of Philosophy	14 (33.3%)	28 (66.7%)	42	13 (37.1%)	22 (62.9%)	35	10 (33.3%)	20 (66.7%)	30	+20.0	+40.0
<b>Total Doctoral</b>	14 (33.3%)	28 (66.7%)	42	13 (37.1%)	22 (62.9%)	35	10 (33.3%)	20 (66.7%)	30	+20.0	+40.0
<b>Total Masters and Doctoral</b>	28 (39.4%)	43 (60.6%)	71	21 (35.6%)	38 (64.4%)	59	27 (41.5%)	38 (58.5%)	65	+20.3	+9.2
<b>Total Graduate</b>	28 (39.4%)	43 (60.6%)	71	21 (35.6%)	38 (64.4%)	59	27 (41.5%)	38 (58.5%)	65	+20.3	+9.2

## Full-Time Enrolment by Faculty, by Degree and by Gender

	Fall 2008			Fall 2007			Fall 2003			% Change (1 Years)	% Change (5 Years)
	Female	Male	Total	Female	Male	Total	Female	Male	Total		
Postdoctoral	0 (0.0%)	1 (100.0%)	1	0 (0.0%)	1 (100.0%)	1	0 (0.0%)	0 (0.0%)	0	0.0	-
<b>Total Faculty of Religious Studies</b>	37 (39.8%)	56 (60.2%)	93	34 (38.2%)	55 (61.8%)	89	38 (42.2%)	52 (57.8%)	90	+4.5	+3.3

## Full-Time Enrolment by Faculty, by Degree and by Gender

	Fall 2008			Fall 2007			Fall 2003			% Change (1 Years)	% Change (5 Years)
	Female	Male	Total	Female	Male	Total	Female	Male	Total		
<b>Faculty of Science</b>											
<b>Undergraduate</b>											
<b>Degrees</b>											
Bachelor of Science	2,054 (56.3%)	1,592 (43.7%)	3,646	1,986 (56.5%)	1,532 (43.5%)	3,518	2,151 (59.6%)	1,458 (40.4%)	3,609	+3.6	+1.0
<b>Total Degrees</b>	<b>2,054</b> (56.3%)	<b>1,592</b> (43.7%)	<b>3,646</b>	<b>1,986</b> (56.5%)	<b>1,532</b> (43.5%)	<b>3,518</b>	<b>2,151</b> (59.6%)	<b>1,458</b> (40.4%)	<b>3,609</b>	<b>+3.6</b>	<b>+1.0</b>
<b>Certificates, Diplomas</b>											
Diploma in Environment	2 (100.0%)	0 (0.0%)	2	1 (100.0%)	0 (0.0%)	1	2 (100.0%)	0 (0.0%)	2	+100.0	0.0
Diploma in Meteorology	0 (0.0%)	0 (0.0%)	0	0 (0.0%)	1 (100.0%)	1	1 (100.0%)	0 (0.0%)	1	-100.0	-100.0
<b>Total Certificates, Diplomas</b>	<b>2</b> (100.0%)	<b>0</b> (0.0%)	<b>2</b>	<b>1</b> (50.0%)	<b>1</b> (50.0%)	<b>2</b>	<b>3</b> (100.0%)	<b>0</b> (0.0%)	<b>3</b>	<b>0.0</b>	<b>-33.3</b>
Special, Visiting, Other	31 (64.6%)	17 (35.4%)	48	46 (67.6%)	22 (32.4%)	68	40 (53.3%)	35 (46.7%)	75	-29.4	-36.0
<b>Total Undergraduate</b>	<b>2,087</b> (56.5%)	<b>1,609</b> (43.5%)	<b>3,696</b>	<b>2,033</b> (56.7%)	<b>1,555</b> (43.3%)	<b>3,588</b>	<b>2,194</b> (59.5%)	<b>1,493</b> (40.5%)	<b>3,687</b>	<b>+3.0</b>	<b>+0.2</b>
<b>Graduate</b>											
<b>Masters</b>											
Master of Arts	8 (50.0%)	8 (50.0%)	16	6 (66.7%)	3 (33.3%)	9	11 (57.9%)	8 (42.1%)	19	+77.8	-15.8
Master of Science	117 (38.9%)	184 (61.1%)	301	106 (35.5%)	193 (64.5%)	299	138 (37.0%)	235 (63.0%)	373	+0.7	-19.3
<b>Total Masters</b>	<b>125</b> (39.4%)	<b>192</b> (60.6%)	<b>317</b>	<b>112</b> (36.4%)	<b>196</b> (63.6%)	<b>308</b>	<b>149</b> (38.0%)	<b>243</b> (62.0%)	<b>392</b>	<b>+2.9</b>	<b>-19.1</b>
<b>Doctoral</b>											

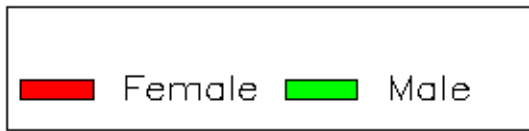
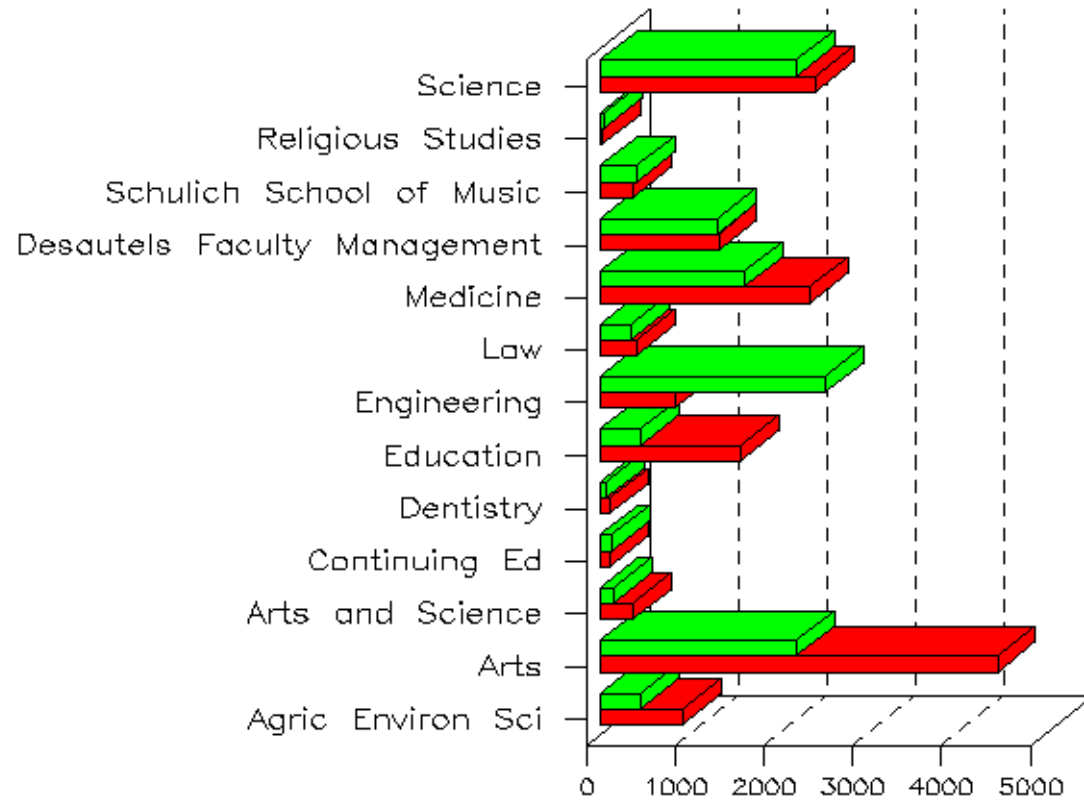


## Full-Time Enrolment by Faculty, by Degree and by Gender

	Fall 2008			Fall 2007			Fall 2003			% Change (1 Years)	% Change (5 Years)
	Female	Male	Total	Female	Male	Total	Female	Male	Total		
Doctor of Philosophy	190 (37.4%)	318 (62.6%)	508	191 (38.6%)	304 (61.4%)	495	157 (38.5%)	251 (61.5%)	408	+2.6	+24.5
<b>Total Doctoral</b>	190 (37.4%)	318 (62.6%)	508	191 (38.6%)	304 (61.4%)	495	157 (38.5%)	251 (61.5%)	408	+2.6	+24.5
<b>Total Masters and Doctoral</b>	315 (38.2%)	510 (61.8%)	825	303 (37.7%)	500 (62.3%)	803	306 (38.3%)	494 (61.8%)	800	+2.7	+3.1
<b>Other Graduate</b>											
Special, Visiting, Other	4 (44.4%)	5 (55.6%)	9	3 (60.0%)	2 (40.0%)	5	0 (0.0%)	2 (100.0%)	2	+80.0	+350.0
<b>Total Other Graduate</b>	4 (44.4%)	5 (55.6%)	9	3 (60.0%)	2 (40.0%)	5	0 (0.0%)	2 (100.0%)	2	+80.0	+350.0
<b>Total Graduate</b>	319 (38.2%)	515 (61.8%)	834	306 (37.9%)	502 (62.1%)	808	306 (38.2%)	496 (61.8%)	802	+3.2	+4.0
Postdoctoral	27 (24.5%)	83 (75.5%)	110	29 (30.2%)	67 (69.8%)	96	20 (21.5%)	73 (78.5%)	93	+14.6	+18.3
<b>Total Faculty of Science</b>	2,433 (52.4%)	2,207 (47.6%)	4,640	2,368 (52.7%)	2,124 (47.3%)	4,492	2,520 (55.0%)	2,062 (45.0%)	4,582	+3.3	+1.3

Full-Time Enrolment by Faculty, by Degree and by Gender

Enrolment Statistics Chart  
by Faculty and by Gender



Full-Time Enrolment by Faculty, by Degree and by Gender

\*\*\*\*\*

Undergraduate numbers are based on "levels" that are defined as: Undergraduate, Dentistry/Law/Medicine.

Graduate numbers are based on "levels" that are defined as: Masters, Graduate Diplomas and Certificates, Doctorate, Graduate Qualifying.

Residents and Fellows numbers are based on "levels" that are defined as: Post Graduate Medicine/Dentistry.

Full-time "loads" for the 2008 and 2007 terms includes: full-time, non-resident, thesis full-time, thesis additional session, visiting additional session, and non resident exchange.

The pre-200209 legacy term (pre-Banner) includes: full-time, additional session and non-resident.

Part-time "loads" for the 2008 and 2007 terms includes: part-time, Continuing Education, leave of absence, no credits, thesis half-time and unknown time status. The pre-200209 legacy term (pre-Banner) includes: part-time, Continuing Education, session of admission, thesis continuing, session of graduation, half-time, and leave of absence.

As of fall 2004, the non resident exchange students are reported under full-time "load".

These statistics are headcounts of students, based on their primary curriculum.

"Faculties of Arts and Science" includes students that are registered in both Arts and Science and are pursuing the B.A.&Sc. degree.

The SUMMARY now appears in the first part of the report and is a COUNT for all students and the following pages contains a DETAILED breakdown.

Note: 2008 registration totals based on October 15, 2008.  
2007 registration totals based on October 15, 2007.  
2003 registration totals based on October 15, 2003.