

Total (FT and PT) Enrolments by Faculty, by Degree and by Gender

	Fall 2008			Fall 2007			Fall 2003			% Change (1 Years)	% Change (5 Years)
	Female	Male	Total	Female	Male	Total	Female	Male	Total		
All Students											
Undergraduate											
Degrees	12,204 (58.5%)	8,642 (41.5%)	20,846	12,131 (59.1%)	8,402 (40.9%)	20,533	11,592 (60.7%)	7,497 (39.3%)	19,089	+1.5	+9.2
Certificates, Diplomas	922 (63.6%)	528 (36.4%)	1,450	907 (65.7%)	474 (34.3%)	1,381	839 (65.9%)	434 (34.1%)	1,273	+5.0	+13.9
Special, Visiting, Other	966 (55.9%)	763 (44.1%)	1,729	1,018 (55.2%)	826 (44.8%)	1,844	764 (54.5%)	639 (45.5%)	1,403	-6.2	+23.2
Total Undergraduate	14,092 (58.7%)	9,933 (41.3%)	24,025	14,056 (59.2%)	9,702 (40.8%)	23,758	13,195 (60.6%)	8,570 (39.4%)	21,765	+1.1	+10.4
Graduate											
Masters	1,961 (56.5%)	1,512 (43.5%)	3,473	1,850 (55.4%)	1,490 (44.6%)	3,340	1,989 (51.7%)	1,859 (48.3%)	3,848	+4.0	-9.7
Doctoral	1,363 (48.2%)	1,464 (51.8%)	2,827	1,290 (48.7%)	1,360 (51.3%)	2,650	1,142 (49.1%)	1,185 (50.9%)	2,327	+6.7	+21.5
Total Masters and Doctoral	3,324 (52.8%)	2,976 (47.2%)	6,300	3,140 (52.4%)	2,850 (47.6%)	5,990	3,131 (50.7%)	3,044 (49.3%)	6,175	+5.2	+2.0
Other Graduate											
Certificates, Diplomas	613 (59.3%)	420 (40.7%)	1,033	586 (57.4%)	435 (42.6%)	1,021	564 (58.0%)	408 (42.0%)	972	+1.2	+6.3
Special, Visiting, Other	156 (51.7%)	146 (48.3%)	302	145 (46.5%)	167 (53.5%)	312	228 (45.4%)	274 (54.6%)	502	-3.2	-39.8
Total Other Graduate	769 (57.6%)	566 (42.4%)	1,335	731 (54.8%)	602 (45.2%)	1,333	792 (53.7%)	682 (46.3%)	1,474	+0.2	-9.4
Total Graduate	4,093 (53.6%)	3,542 (46.4%)	7,635	3,871 (52.9%)	3,452 (47.1%)	7,323	3,923 (51.3%)	3,726 (48.7%)	7,649	+4.3	-0.2
All Students (Credit)	18,185 (57.4%)	13,475 (42.6%)	31,660	17,927 (57.7%)	13,154 (42.3%)	31,081	17,118 (58.2%)	12,291 (41.8%)	29,414	+1.9	+7.6

Total (FT and PT) Enrolments by Faculty, by Degree and by Gender

	Fall 2008			Fall 2007			Fall 2003			% Change (1 Years)	% Change (5 Years)
	Female	Male	Total	Female	Male	Total	Female	Male	Total		
Postdoctoral	232 (42.9%)	309 (57.1%)	541	213 (43.5%)	277 (56.5%)	490	179 (43.7%)	231 (56.3%)	410	+10.4	+32.0
Residents and Fellows	434 (44.3%)	546 (55.7%)	980	406 (43.1%)	537 (56.9%)	943	308 (38.1%)	500 (61.9%)	808	+3.9	+21.3
Other (Non-credit)											
Farm Management Technology	18 (19.8%)	73 (80.2%)	91	15 (17.4%)	71 (82.6%)	86	16 (21.6%)	58 (78.4%)	74	+5.8	+23.0
Continuing Education Unit	491 (52.5%)	445 (47.5%)	936	528 (57.3%)	394 (42.7%)	922	798 (55.5%)	639 (44.5%)	1,437	+1.5	-34.9
Total Other (Non-credit)	509 (49.6%)	518 (50.4%)	1,027	543 (53.9%)	465 (46.1%)	1,008	814 (53.9%)	697 (46.1%)	1,511	+1.9	-32.0
All Students (Total)	19,360 (56.6%)	14,848 (43.4%)	34,208	19,089 (56.9%)	14,433 (43.1%)	33,522	18,419 (57.3%)	13,718 (42.7%)	32,143	+2.0	+6.4

Total (FT and PT) Enrolments by Faculty, by Degree and by Gender

	Fall 2008			Fall 2007			Fall 2003			% Change (1 Years)	% Change (5 Years)
	Female	Male	Total	Female	Male	Total	Female	Male	Total		
All Students											
Faculty of Agric Environ Sci	1,060 (67.7%)	505 (32.3%)	1,565	994 (67.8%)	473 (32.2%)	1,467	745 (65.3%)	396 (34.7%)	1,141	+6.7	+37.2
Faculty of Arts	4,889 (67.0%)	2,412 (33.0%)	7,301	4,793 (66.9%)	2,370 (33.1%)	7,163	5,128 (67.1%)	2,509 (32.8%)	7,639	+1.9	-4.4
Faculties of Arts and Science	381 (69.7%)	166 (30.3%)	547	390 (69.8%)	169 (30.2%)	559	0 (0.0%)	0 (0.0%)	0	-2.1	-
Centre for Continuing Ed	2,465 (57.2%)	1,843 (42.8%)	4,308	2,495 (58.3%)	1,784 (41.7%)	4,279	2,421 (56.6%)	1,853 (43.3%)	4,277	+0.7	+0.7
Faculty of Dentistry	117 (59.1%)	81 (40.9%)	198	112 (56.6%)	86 (43.4%)	198	88 (59.5%)	60 (40.5%)	148	0.0	+33.8
Faculty of Education	2,003 (77.6%)	578 (22.4%)	2,581	1,999 (78.0%)	563 (22.0%)	2,562	2,140 (79.7%)	543 (20.2%)	2,684	+0.7	-3.8
Faculty of Engineering	906 (24.6%)	2,770 (75.4%)	3,676	871 (25.1%)	2,594 (74.9%)	3,465	984 (29.1%)	2,398 (70.9%)	3,382	+6.1	+8.7
Faculty of Law	442 (54.6%)	367 (45.4%)	809	448 (54.8%)	370 (45.2%)	818	426 (55.8%)	337 (44.2%)	763	-1.1	+6.0
Faculty of Medicine	2,540 (60.1%)	1,687 (39.9%)	4,227	2,473 (60.4%)	1,623 (39.6%)	4,096	1,969 (57.7%)	1,444 (42.3%)	3,413	+3.2	+23.8
Desautels Faculty Management	1,543 (49.0%)	1,607 (51.0%)	3,150	1,573 (49.0%)	1,639 (51.0%)	3,212	1,384 (47.2%)	1,546 (52.8%)	2,930	-1.9	+7.5
Schulich School of Music	405 (47.6%)	445 (52.4%)	850	386 (47.3%)	430 (52.7%)	816	413 (51.8%)	385 (48.2%)	798	+4.2	+6.5
Faculty of Religious Studies	48 (41.7%)	67 (58.3%)	115	50 (41.0%)	72 (59.0%)	122	52 (46.0%)	61 (54.0%)	113	-5.7	+1.8
Faculty of Science	2,561 (52.5%)	2,320 (47.5%)	4,881	2,505 (52.6%)	2,260 (47.4%)	4,765	2,669 (55.0%)	2,186 (45.0%)	4,855	+2.4	+0.5
Total	19,360 (56.6%)	14,848 (43.4%)	34,208	19,089 (56.9%)	14,433 (43.1%)	33,522	18,419 (57.3%)	13,718 (42.7%)	32,143	+2.0	+6.4

Total (FT and PT) Enrolments by Faculty, by Degree and by Gender

	Fall 2008			Fall 2007			Fall 2003			% Change (1 Years)	% Change (5 Years)
	Female	Male	Total	Female	Male	Total	Female	Male	Total		
Faculty of Agric Environ Sci											
Undergraduate											
Degrees											
B Eng Bioresource	51 (45.5%)	61 (54.5%)	112	43 (46.2%)	50 (53.8%)	93	0 (0.0%)	0 (0.0%)	0	+20.4	-
B SC (Food Science)	51 (68.9%)	23 (31.1%)	74	34 (75.6%)	11 (24.4%)	45	17 (65.4%)	9 (34.6%)	26	+64.4	+184.6
B SC (Nutritional Science)	354 (93.9%)	23 (6.1%)	377	339 (92.6%)	27 (7.4%)	366	194 (95.6%)	9 (4.4%)	203	+3.0	+85.7
B SC Agricu and Environm Sc	309 (69.4%)	136 (30.6%)	445	297 (69.2%)	132 (30.8%)	429	271 (70.6%)	113 (29.4%)	384	+3.7	+15.9
B SC Agricultural Engineering	0 (0.0%)	0 (0.0%)	0	0 (0.0%)	0 (0.0%)	0	14 (35.9%)	25 (64.1%)	39	0.0	-100.0
Total Degrees	765 (75.9%)	243 (24.1%)	1,008	713 (76.4%)	220 (23.6%)	933	496 (76.1%)	156 (23.9%)	652	+8.0	+54.6
Certificates, Diplomas											
Cert in Ecological Agriculture	1 (50.0%)	1 (50.0%)	2	0 (0.0%)	1 (100.0%)	1	1 (100.0%)	0 (0.0%)	1	+100.0	+100.0
Cert in Food Science	3 (75.0%)	1 (25.0%)	4	3 (75.0%)	1 (25.0%)	4	0 (0.0%)	0 (0.0%)	0	0.0	-
Diploma in Environment	0 (0.0%)	1 (100.0%)	1	4 (66.7%)	2 (33.3%)	6	3 (100.0%)	0 (0.0%)	3	-83.3	-66.7
Total Certificates, Diplomas	4 (57.1%)	3 (42.9%)	7	7 (63.6%)	4 (36.4%)	11	4 (100.0%)	0 (0.0%)	4	-36.4	+75.0
Special, Visiting, Other	19 (90.5%)	2 (9.5%)	21	18 (69.2%)	8 (30.8%)	26	34 (65.4%)	18 (34.6%)	52	-19.2	-59.6
Total Undergraduate	788 (76.1%)	248 (23.9%)	1,036	738 (76.1%)	232 (23.9%)	970	534 (75.4%)	174 (24.6%)	708	+6.8	+46.3

Total (FT and PT) Enrolments by Faculty, by Degree and by Gender

	Fall 2008			Fall 2007			Fall 2003			% Change (1 Years)	% Change (5 Years)
	Female	Male	Total	Female	Male	Total	Female	Male	Total		
Graduate											
Masters											
Master of Science	108 (58.1%)	78 (41.9%)	186	114 (62.3%)	69 (37.7%)	183	110 (64.3%)	61 (35.7%)	171	+1.6	+8.8
Master of Science Applied	40 (71.4%)	16 (28.6%)	56	35 (72.9%)	13 (27.1%)	48	11 (84.6%)	2 (15.4%)	13	+16.7	+330.8
Total Masters	148 (61.2%)	94 (38.8%)	242	149 (64.5%)	82 (35.5%)	231	121 (65.8%)	63 (34.2%)	184	+4.8	+31.5
Doctoral											
Doctor of Philosophy	80 (50.3%)	79 (49.7%)	159	71 (49.7%)	72 (50.3%)	143	62 (42.2%)	85 (57.8%)	147	+11.2	+8.2
Total Doctoral	80 (50.3%)	79 (49.7%)	159	71 (49.7%)	72 (50.3%)	143	62 (42.2%)	85 (57.8%)	147	+11.2	+8.2
Total Masters and Doctoral	228 (56.9%)	173 (43.1%)	401	220 (58.8%)	154 (41.2%)	374	183 (55.3%)	148 (44.7%)	331	+7.2	+21.1
Other Graduate											
Certificates, Diplomas											
Gr Cert in Biotechnology	5 (71.4%)	2 (28.6%)	7	5 (100.0%)	0 (0.0%)	5	7 (53.8%)	6 (46.2%)	13	+40.0	-46.2
Gr Dip in Reg Diet (R.D.) Cred	5 (100.0%)	0 (0.0%)	5	4 (100.0%)	0 (0.0%)	4	0 (0.0%)	0 (0.0%)	0	+25.0	-
Total Certificates, Diplomas	10 (83.3%)	2 (16.7%)	12	9 (100.0%)	0 (0.0%)	9	7 (53.8%)	6 (46.2%)	13	+33.3	-7.7
Special, Visiting, Other	2 (100.0%)	0 (0.0%)	2	2 (66.7%)	1 (33.3%)	3	0 (0.0%)	1 (100.0%)	1	-33.3	+100.0
Total Other Graduate	12 (85.7%)	2 (14.3%)	14	11 (91.7%)	1 (8.3%)	12	7 (50.0%)	7 (50.0%)	14	+16.7	0.0
Total Graduate	240 (57.8%)	175 (42.2%)	415	231 (59.8%)	155 (40.2%)	386	190 (55.1%)	155 (44.9%)	345	+7.5	+20.3

Total (FT and PT) Enrolments by Faculty, by Degree and by Gender

	Fall 2008			Fall 2007			Fall 2003			% Change (1 Years)	% Change (5 Years)
	Female	Male	Total	Female	Male	Total	Female	Male	Total		
Postdoctoral	14 (60.9%)	9 (39.1%)	23	10 (40.0%)	15 (60.0%)	25	5 (35.7%)	9 (64.3%)	14	-8.0	+64.3
Farm Management Technology	18 (19.8%)	73 (80.2%)	91	15 (17.4%)	71 (82.6%)	86	16 (21.6%)	58 (78.4%)	74	+5.8	+23.0
Total Faculty of Agric Environ Sci	1,060 (67.7%)	505 (32.3%)	1,565	994 (67.8%)	473 (32.2%)	1,467	745 (65.3%)	396 (34.7%)	1,141	+6.7	+37.2

Total (FT and PT) Enrolments by Faculty, by Degree and by Gender

	Fall 2008			Fall 2007			Fall 2003			% Change (1 Years)	% Change (5 Years)
	Female	Male	Total	Female	Male	Total	Female	Male	Total		
Faculty of Arts											
Undergraduate											
Degrees											
Bachelor of Arts	3,940 (66.9%)	1,953 (33.1%)	5,893	3,884 (67.1%)	1,908 (32.9%)	5,792	4,137 (68.1%)	1,934 (31.9%)	6,071	+1.7	-2.9
Bachelor of Social Work	201 (84.8%)	36 (15.2%)	237	195 (87.1%)	29 (12.9%)	224	206 (85.8%)	34 (14.2%)	240	+5.8	-1.3
Total Degrees	4,141 (67.6%)	1,989 (32.4%)	6,130	4,079 (67.8%)	1,937 (32.2%)	6,016	4,343 (68.8%)	1,968 (31.2%)	6,311	+1.9	-2.9
Certificates, Diplomas											
Diploma in Environment	12 (75.0%)	4 (25.0%)	16	12 (75.0%)	4 (25.0%)	16	11 (73.3%)	4 (26.7%)	15	0.0	+6.7
Total Certificates, Diplomas	12 (75.0%)	4 (25.0%)	16	12 (75.0%)	4 (25.0%)	16	11 (73.3%)	4 (26.7%)	15	0.0	+6.7
Special, Visiting, Other	137 (63.7%)	78 (36.3%)	215	128 (59.3%)	88 (40.7%)	216	148 (54.4%)	123 (45.2%)	272	-0.5	-21.0
Total Undergraduate	4,290 (67.4%)	2,071 (32.6%)	6,361	4,219 (67.5%)	2,029 (32.5%)	6,248	4,502 (68.2%)	2,096 (31.8%)	6,598	+1.8	-3.6
Graduate											
Masters											
Master of Arts	180 (64.7%)	98 (35.3%)	278	181 (61.8%)	112 (38.2%)	293	223 (55.9%)	176 (44.1%)	399	-5.1	-30.3
Master of Social Work	88 (83.0%)	18 (17.0%)	106	85 (88.5%)	11 (11.5%)	96	116 (74.4%)	40 (25.6%)	156	+10.4	-32.1
Total Masters	268 (69.8%)	116 (30.2%)	384	266 (68.4%)	123 (31.6%)	389	339 (61.1%)	216 (38.9%)	555	-1.3	-30.8
Doctoral											

Total (FT and PT) Enrolments by Faculty, by Degree and by Gender

	Fall 2008			Fall 2007			Fall 2003			% Change (1 Years)	% Change (5 Years)
	Female	Male	Total	Female	Male	Total	Female	Male	Total		
Doctor of Philosophy	285 (58.9%)	199 (41.1%)	484	269 (57.7%)	197 (42.3%)	466	263 (59.0%)	183 (41.0%)	446	+3.9	+8.5
Total Doctoral	285 (58.9%)	199 (41.1%)	484	269 (57.7%)	197 (42.3%)	466	263 (59.0%)	183 (41.0%)	446	+3.9	+8.5
Total Masters and Doctoral	553 (63.7%)	315 (36.3%)	868	535 (62.6%)	320 (37.4%)	855	602 (60.1%)	399 (39.9%)	1,001	+1.5	-13.3
Other Graduate											
Special, Visiting, Other	24 (60.0%)	16 (40.0%)	40	21 (60.0%)	14 (40.0%)	35	14 (60.9%)	8 (34.8%)	23	+14.3	+73.9
Total Other Graduate	24 (60.0%)	16 (40.0%)	40	21 (60.0%)	14 (40.0%)	35	14 (60.9%)	8 (34.8%)	23	+14.3	+73.9
Total Graduate	577 (63.5%)	331 (36.5%)	908	556 (62.5%)	334 (37.5%)	890	616 (60.2%)	408 (39.8%)	1,024	+2.0	-11.3
Postdoctoral	22 (68.8%)	10 (31.3%)	32	18 (72.0%)	7 (28.0%)	25	10 (58.8%)	7 (41.2%)	17	+28.0	+88.2
Total Faculty of Arts	4,889 (67.0%)	2,412 (33.0%)	7,301	4,793 (66.9%)	2,370 (33.1%)	7,163	5,128 (67.1%)	2,511 (32.9%)	7,639	+1.9	-4.4

Total (FT and PT) Enrolments by Faculty, by Degree and by Gender

	Fall 2008			Fall 2007			Fall 2003			% Change (1 Years)	% Change (5 Years)
	Female	Male	Total	Female	Male	Total	Female	Male	Total		
Faculties of Arts and Science											
Undergraduate											
Degrees											
Bachelor of Arts and Science	381 (69.7%)	166 (30.3%)	547	390 (69.8%)	169 (30.2%)	559	0 (0.0%)	0 (0.0%)	0	-2.1	-
Total Degrees	381 (69.7%)	166 (30.3%)	547	390 (69.8%)	169 (30.2%)	559	0 (0.0%)	0 (0.0%)	0	-2.1	-
Total Undergraduate	381 (69.7%)	166 (30.3%)	547	390 (69.8%)	169 (30.2%)	559	0 (0.0%)	0 (0.0%)	0	-2.1	-
Total Faculties of Arts and Science	381 (69.7%)	166 (30.3%)	547	390 (69.8%)	169 (30.2%)	559	0 (0.0%)	0 (0.0%)	0	-2.1	-

Total (FT and PT) Enrolments by Faculty, by Degree and by Gender

	Fall 2008			Fall 2007			Fall 2003			% Change (1 Years)	% Change (5 Years)
	Female	Male	Total	Female	Male	Total	Female	Male	Total		
Centre for Continuing Ed											
Undergraduate											
Certificates, Diplomas											
Cert Prof Engl for Prof Comm	108 (58.7%)	76 (41.3%)	184	74 (52.1%)	68 (47.9%)	142	0 (0.0%)	0 (0.0%)	0	+29.6	-
Cert Prof French for Prof Comm	31 (72.1%)	12 (27.9%)	43	32 (74.4%)	11 (25.6%)	43	0 (0.0%)	0 (0.0%)	0	0.0	-
Cert System Analysis & Design	13 (30.2%)	30 (69.8%)	43	9 (31.0%)	20 (69.0%)	29	23 (36.5%)	40 (63.5%)	63	+48.3	-31.7
Cert Transport & Logistics	9 (69.2%)	4 (30.8%)	13	17 (68.0%)	8 (32.0%)	25	5 (26.3%)	14 (73.7%)	19	-48.0	-31.6
Cert in Comp Software Tech	0 (0.0%)	0 (0.0%)	0	0 (0.0%)	0 (0.0%)	0	11 (26.8%)	30 (73.2%)	41	0.0	-100.0
Cert in Entrepreneurship	5 (45.5%)	6 (54.5%)	11	2 (100.0%)	0 (0.0%)	2	0 (0.0%)	0 (0.0%)	0	+450.0	-
Cert in Health & Soc Serv Mgmt	27 (87.1%)	4 (12.9%)	31	31 (86.1%)	5 (13.9%)	36	16 (84.2%)	3 (15.8%)	19	-13.9	+63.2
Cert in Human Resources Mgmt	123 (81.5%)	28 (18.5%)	151	138 (83.1%)	28 (16.9%)	166	167 (86.5%)	26 (13.5%)	193	-9.0	-21.8
Cert in Logistics Management	15 (45.5%)	18 (54.5%)	33	13 (56.5%)	10 (43.5%)	23	0 (0.0%)	0 (0.0%)	0	+43.5	-
Cert in Public Relations	57 (75.0%)	19 (25.0%)	76	15 (62.5%)	9 (37.5%)	24	0 (0.0%)	0 (0.0%)	0	+216.7	-
Cert in Public Relations Mgmt	25 (73.5%)	9 (26.5%)	34	54 (73.0%)	20 (27.0%)	74	63 (82.9%)	13 (17.1%)	76	-54.1	-55.3

Total (FT and PT) Enrolments by Faculty, by Degree and by Gender

	Fall 2008			Fall 2007			Fall 2003			% Change (1 Years)	% Change (5 Years)
	Female	Male	Total	Female	Male	Total	Female	Male	Total		
Cert in Software Development	7 (17.9%)	32 (82.1%)	39	3 (18.8%)	13 (81.3%)	16	0 (0.0%)	0 (0.0%)	0	+143.8	-
Certificate in Accounting	92 (55.4%)	74 (44.6%)	166	81 (58.7%)	57 (41.3%)	138	6 (40.0%)	9 (60.0%)	15	+20.3	-
Certificate in Internal Audit	0 (0.0%)	0 (0.0%)	0	1 (100.0%)	0 (0.0%)	1	0 (0.0%)	0 (0.0%)	0	-100.0	0.0
Certificate in Management	89 (47.1%)	100 (52.9%)	189	100 (44.4%)	125 (55.6%)	225	152 (49.2%)	157 (50.8%)	309	-16.0	-38.8
Certificate in Marketing	33 (57.9%)	24 (42.1%)	57	33 (60.0%)	22 (40.0%)	55	45 (48.9%)	47 (51.1%)	92	+3.6	-38.0
Certificate in Risk Management	19 (45.2%)	23 (54.8%)	42	16 (44.4%)	20 (55.6%)	36	10 (38.5%)	16 (61.5%)	26	+16.7	+61.5
Certificate in Translation	190 (78.2%)	53 (21.8%)	243	203 (83.5%)	40 (16.5%)	243	169 (78.2%)	47 (21.8%)	216	0.0	+12.5
Certificate in Transportation	0 (0.0%)	0 (0.0%)	0	1 (100.0%)	0 (0.0%)	1	2 (66.7%)	1 (33.3%)	3	-100.0	-100.0
Dip French for Professionals	0 (0.0%)	0 (0.0%)	0	0 (0.0%)	0 (0.0%)	0	1 (100.0%)	0 (0.0%)	1	0.0	-100.0
Diploma in Accounting	0 (0.0%)	0 (0.0%)	0	0 (0.0%)	0 (0.0%)	0	0 (0.0%)	1 (100.0%)	1	0.0	-100.0
Total Certificates, Diplomas	843 (62.2%)	512 (37.8%)	1,355	823 (64.3%)	456 (35.7%)	1,279	670 (62.4%)	404 (37.6%)	1,074	+5.9	+26.2
Special, Visiting, Other	598 (55.0%)	490 (45.0%)	1,088	655 (54.9%)	538 (45.1%)	1,193	339 (52.7%)	1 (0.2%)	643	-8.8	+69.2
Total Undergraduate	1,441 (59.0%)	1,002 (41.0%)	2,443	1,478 (59.8%)	994 (40.2%)	2,472	1,009 (58.8%)	708 (41.2%)	1,717	-1.2	+42.3
Graduate											
Other Graduate											
Certificates, Diplomas											

Total (FT and PT) Enrolments by Faculty, by Degree and by Gender

	Fall 2008			Fall 2007			Fall 2003			% Change (1 Years)	% Change (5 Years)
	Female	Male	Total	Female	Male	Total	Female	Male	Total		
Dip in Human Resources Mgmt	30 (78.9%)	8 (21.1%)	38	9 (81.8%)	2 (18.2%)	11	0 (0.0%)	0 (0.0%)	0	+245.5	-
Dip in Information Technology	3 (23.1%)	10 (76.9%)	13	5 (25.0%)	15 (75.0%)	20	8 (44.4%)	10 (55.6%)	18	-35.0	-27.8
Dip in Pub Relations Mgmt	40 (90.9%)	4 (9.1%)	44	19 (95.0%)	1 (5.0%)	20	0 (0.0%)	0 (0.0%)	0	+120.0	-
Diploma in Accounting	109 (61.2%)	69 (38.8%)	178	138 (63.0%)	81 (37.0%)	219	149 (67.1%)	73 (32.9%)	222	-18.7	-19.8
Diploma in E-Business	1 (33.3%)	2 (66.7%)	3	0 (0.0%)	2 (100.0%)	2	0 (0.0%)	0 (0.0%)	0	+50.0	-
Diploma in Management	173 (49.1%)	179 (50.9%)	352	180 (51.1%)	172 (48.9%)	352	199 (53.5%)	173 (46.5%)	372	0.0	-5.4
Grad CT Field of Mntl Hlth/Ill	0 (0.0%)	0 (0.0%)	0	0 (0.0%)	0 (0.0%)	0	0 (0.0%)	1 (100.0%)	1	0.0	-100.0
Grad Cert in Accounting Practi	8 (53.3%)	7 (46.7%)	15	0 (0.0%)	1 (100.0%)	1	0 (0.0%)	0 (0.0%)	0	-	-
Grad Cert in Entrepreneurship	1 (33.3%)	2 (66.7%)	3	0 (0.0%)	0 (0.0%)	0	0 (0.0%)	0 (0.0%)	0	-	-
Grad Cert in Hum Resources Mgm	9 (81.8%)	2 (18.2%)	11	3 (100.0%)	0 (0.0%)	3	0 (0.0%)	0 (0.0%)	0	+266.7	-
Grad Cert in Operations Mgmt	1 (16.7%)	5 (83.3%)	6	2 (25.0%)	6 (75.0%)	8	3 (50.0%)	3 (50.0%)	6	-25.0	0.0
Grad Cert in Pub Relations Mgm	5 (100.0%)	0 (0.0%)	5	4 (100.0%)	0 (0.0%)	4	0 (0.0%)	0 (0.0%)	0	+25.0	-
Grad Cert in Treasury/Finance	5 (20.8%)	19 (79.2%)	24	6 (28.6%)	15 (71.4%)	21	10 (34.5%)	19 (65.5%)	29	+14.3	-17.2

Total (FT and PT) Enrolments by Faculty, by Degree and by Gender

	Fall 2008			Fall 2007			Fall 2003			% Change (1 Years)	% Change (5 Years)
	Female	Male	Total	Female	Male	Total	Female	Male	Total		
Grad Dip in Translation	22 (71.0%)	9 (29.0%)	31	22 (71.0%)	9 (29.0%)	31	25 (83.3%)	5 (16.7%)	30	0.0	+3.3
Graduate Cert in E-Business	3 (42.9%)	4 (57.1%)	7	2 (25.0%)	6 (75.0%)	8	0 (0.0%)	0 (0.0%)	0	-12.5	-
Graduate Cert in E-Commerce	1 (100.0%)	0 (0.0%)	1	0 (0.0%)	0 (0.0%)	0	14 (58.3%)	10 (41.7%)	24	-	-95.8
Graduate Cert in Health Care	2 (40.0%)	3 (60.0%)	5	3 (75.0%)	1 (25.0%)	4	2 (100.0%)	0 (0.0%)	2	+25.0	+150.0
Graduate Cert in Intl Business	5 (71.4%)	2 (28.6%)	7	6 (50.0%)	6 (50.0%)	12	10 (55.6%)	8 (44.4%)	18	-41.7	-61.1
Graduate Cert in Leadership	12 (75.0%)	4 (25.0%)	16	17 (73.9%)	6 (26.1%)	23	13 (61.9%)	8 (38.1%)	21	-30.4	-23.8
Graduate Cert in Marketing	13 (61.9%)	8 (38.1%)	21	6 (40.0%)	9 (60.0%)	15	13 (65.0%)	7 (35.0%)	20	+40.0	+5.0
Graduate Cert in Taxation	2 (66.7%)	1 (33.3%)	3	2 (40.0%)	3 (60.0%)	5	4 (66.7%)	2 (33.3%)	6	-40.0	-50.0
Graduate Diploma in Taxation	0 (0.0%)	0 (0.0%)	0	0 (0.0%)	0 (0.0%)	0	5 (45.5%)	6 (54.5%)	11	0.0	-100.0
Total Certificates, Diplomas	445 (56.8%)	338 (43.2%)	783	424 (55.9%)	335 (44.1%)	759	455 (58.3%)	325 (41.7%)	780	+3.2	+0.4
Special, Visiting, Other	88 (60.3%)	58 (39.7%)	146	65 (51.6%)	61 (48.4%)	126	159 (46.2%)	184 (53.5%)	344	+15.9	-57.6
Total Other Graduate	533 (57.4%)	396 (42.6%)	929	489 (55.3%)	396 (44.7%)	885	614 (54.6%)	509 (45.3%)	1,124	+5.0	-17.3
Total Graduate	533 (57.4%)	396 (42.6%)	929	489 (55.3%)	396 (44.7%)	885	614 (54.6%)	510 (45.4%)	1,124	+5.0	-17.3
Other (Non-credit)											
Continuing Education Unit											

Total (FT and PT) Enrolments by Faculty, by Degree and by Gender

	Fall 2008			Fall 2007			Fall 2003			% Change (1 Years)	% Change (5 Years)
	Female	Male	Total	Female	Male	Total	Female	Male	Total		
Cert Proficiency in English	166 (57.2%)	124 (42.8%)	290	170 (62.5%)	102 (37.5%)	272	475 (54.9%)	1 (0.1%)	865	+6.6	-66.5
Cert Proficiency in French	78 (67.2%)	38 (32.8%)	116	111 (74.0%)	39 (26.0%)	150	212 (59.9%)	142 (40.1%)	354	-22.7	-67.2
Cert Proficiency in German	0 (0.0%)	0 (0.0%)	0	0 (0.0%)	0 (0.0%)	0	4 (50.0%)	4 (50.0%)	8	0.0	-100.0
Cert Proficiency in Italian	0 (0.0%)	0 (0.0%)	0	0 (0.0%)	0 (0.0%)	0	2 (28.6%)	5 (71.4%)	7	0.0	-100.0
Cert Proficiency in Russian	0 (0.0%)	0 (0.0%)	0	0 (0.0%)	0 (0.0%)	0	7 (70.0%)	3 (30.0%)	10	0.0	-100.0
Cert Proficiency in Spanish	19 (70.4%)	8 (29.6%)	27	34 (60.7%)	22 (39.3%)	56	73 (61.9%)	45 (38.1%)	118	-51.8	-77.1
Non-Degree	228 (45.3%)	275 (54.7%)	503	213 (48.0%)	231 (52.0%)	444	25 (33.8%)	49 (66.2%)	74	+13.3	+579.7
Total Continuing Education Unit	491 (52.5%)	445 (47.5%)	936	528 (57.3%)	394 (42.7%)	922	798 (55.6%)	638 (44.4%)	1,436	+1.5	-34.8
Total Other (Non-credit)	491 (52.5%)	445 (47.5%)	936	528 (57.3%)	394 (42.7%)	922	798 (55.6%)	638 (44.4%)	1,436	+1.5	-34.8
Total Centre for Continuing Ed	2,465 (57.2%)	1,843 (42.8%)	4,308	2,495 (58.3%)	1,784 (41.7%)	4,279	2,421 (56.6%)	1,856 (43.4%)	4,277	+0.7	+0.7

Total (FT and PT) Enrolments by Faculty, by Degree and by Gender

	Fall 2008			Fall 2007			Fall 2003			% Change (1 Years)	% Change (5 Years)
	Female	Male	Total	Female	Male	Total	Female	Male	Total		
Faculty of Dentistry											
Undergraduate											
Degrees											
D M D	77 (60.6%)	50 (39.4%)	127	76 (60.3%)	50 (39.7%)	126	71 (61.7%)	44 (38.3%)	115	+0.8	+10.4
Total Degrees	77 (60.6%)	50 (39.4%)	127	76 (60.3%)	50 (39.7%)	126	71 (61.7%)	44 (38.3%)	115	+0.8	+10.4
Total Undergraduate	77 (60.6%)	50 (39.4%)	127	76 (60.3%)	50 (39.7%)	126	71 (61.7%)	44 (38.3%)	115	+0.8	+10.4
Graduate											
Masters											
Master of Science	7 (43.8%)	9 (56.3%)	16	8 (61.5%)	5 (38.5%)	13	6 (60.0%)	4 (40.0%)	10	+23.1	+60.0
Total Masters	7 (43.8%)	9 (56.3%)	16	8 (61.5%)	5 (38.5%)	13	6 (60.0%)	4 (40.0%)	10	+23.1	+60.0
Doctoral											
Doctor of Philosophy	9 (56.3%)	7 (43.8%)	16	6 (40.0%)	9 (60.0%)	15	2 (100.0%)	0 (0.0%)	2	+6.7	+700.0
Total Doctoral	9 (56.3%)	7 (43.8%)	16	6 (40.0%)	9 (60.0%)	15	2 (100.0%)	0 (0.0%)	2	+6.7	+700.0
Total Masters and Doctoral	16 (50.0%)	16 (50.0%)	32	14 (50.0%)	14 (50.0%)	28	8 (66.7%)	4 (33.3%)	12	+14.3	+166.7
Total Graduate	16 (50.0%)	16 (50.0%)	32	14 (50.0%)	14 (50.0%)	28	8 (66.7%)	4 (33.3%)	12	+14.3	+166.7
Postdoctoral	5 (50.0%)	5 (50.0%)	10	7 (46.7%)	8 (53.3%)	15	1 (100.0%)	0 (0.0%)	1	-33.3	+900.0
Residents and Fellows											

Total (FT and PT) Enrolments by Faculty, by Degree and by Gender

	Fall 2008			Fall 2007			Fall 2003			% Change (1 Years)	% Change (5 Years)
	Female	Male	Total	Female	Male	Total	Female	Male	Total		
Dental Resident	19 (65.5%)	10 (34.5%)	29	15 (51.7%)	14 (48.3%)	29	8 (40.0%)	12 (60.0%)	20	0.0	+45.0
Total Residents and Fellows	19 (65.5%)	10 (34.5%)	29	15 (51.7%)	14 (48.3%)	29	8 (40.0%)	12 (60.0%)	20	0.0	+45.0
Total Faculty of Dentistry	117 (59.1%)	81 (40.9%)	198	112 (56.6%)	86 (43.4%)	198	88 (59.5%)	60 (40.5%)	148	0.0	+33.8

Total (FT and PT) Enrolments by Faculty, by Degree and by Gender

	Fall 2008			Fall 2007			Fall 2003			% Change (1 Years)	% Change (5 Years)
	Female	Male	Total	Female	Male	Total	Female	Male	Total		
Faculty of Education											
Undergraduate											
Degrees											
B Ed Vocational Education	2 (66.7%)	1 (33.3%)	3	4 (36.4%)	7 (63.6%)	11	23 (41.8%)	32 (58.2%)	55	-72.7	-94.5
B Ed for Certified Teachers	11 (91.7%)	1 (8.3%)	12	9 (100.0%)	0 (0.0%)	9	13 (100.0%)	0 (0.0%)	13	+33.3	-7.7
B SC (Kinesiology)	104 (60.8%)	67 (39.2%)	171	99 (62.3%)	60 (37.7%)	159	0 (0.0%)	0 (0.0%)	0	+7.5	-
Bachelor of Education	1,086 (79.5%)	280 (20.5%)	1,366	1,094 (80.3%)	268 (19.7%)	1,362	1,243 (80.7%)	298 (19.3%)	1,541	+0.3	-11.4
Total Degrees	1,203 (77.5%)	349 (22.5%)	1,552	1,206 (78.3%)	335 (21.7%)	1,541	1,279 (79.5%)	330 (20.5%)	1,609	+0.7	-3.5
Certificates, Diplomas											
CT 1st Nat & Inuit St Pers Srv	0 (0.0%)	0 (0.0%)	0	0 (0.0%)	0 (0.0%)	0	1 (100.0%)	0 (0.0%)	1	0.0	-100.0
Cert Aboriginal Literacy Ed	0 (0.0%)	0 (0.0%)	0	0 (0.0%)	0 (0.0%)	0	7 (87.5%)	1 (12.5%)	8	0.0	-100.0
Cert 1st Nat & Inuit Ed Ldrshp	0 (0.0%)	0 (0.0%)	0	0 (0.0%)	0 (0.0%)	0	1 (100.0%)	0 (0.0%)	1	0.0	-100.0
Cert Ed 1st Nations & Inuit	0 (0.0%)	0 (0.0%)	0	0 (0.0%)	0 (0.0%)	0	25 (83.3%)	5 (16.7%)	30	0.0	-100.0
Cert Educational Technology	0 (0.0%)	0 (0.0%)	0	0 (0.0%)	0 (0.0%)	0	4 (80.0%)	1 (20.0%)	5	0.0	-100.0
Cert Inclusive Education	43 (93.5%)	3 (6.5%)	46	43 (87.8%)	6 (12.2%)	49	79 (89.8%)	9 (10.2%)	88	-6.1	-47.7

Total (FT and PT) Enrolments by Faculty, by Degree and by Gender

	Fall 2008			Fall 2007			Fall 2003			% Change (1 Years)	% Change (5 Years)
	Female	Male	Total	Female	Male	Total	Female	Male	Total		
Cert Northern & Native Educ	0 (0.0%)	0 (0.0%)	0	0 (0.0%)	0 (0.0%)	0	2 (100.0%)	0 (0.0%)	2	0.0	-100.0
Cert Second Language Teach	0 (0.0%)	0 (0.0%)	0	0 (0.0%)	0 (0.0%)	0	2 (100.0%)	0 (0.0%)	2	0.0	-100.0
Dip Human Rel & Family Life Ed	8 (100.0%)	0 (0.0%)	8	14 (100.0%)	0 (0.0%)	14	15 (100.0%)	0 (0.0%)	15	-42.9	-46.7
Total Certificates, Diplomas	51 (94.4%)	3 (5.6%)	54	57 (90.5%)	6 (9.5%)	63	136 (89.5%)	16 (10.5%)	152	-14.3	-64.5
Special, Visiting, Other	46 (88.5%)	6 (11.5%)	52	40 (75.5%)	13 (24.5%)	53	77 (87.5%)	11 (12.5%)	88	-1.9	-40.9
Total Undergraduate	1,300 (78.4%)	358 (21.6%)	1,658	1,303 (78.6%)	354 (21.4%)	1,657	1,492 (80.7%)	357 (19.3%)	1,849	+0.1	-10.3
Graduate											
Masters											
Master of Arts	228 (77.6%)	66 (22.4%)	294	211 (77.6%)	61 (22.4%)	272	213 (82.2%)	46 (17.8%)	259	+8.1	+13.5
Master of Education	70 (90.9%)	7 (9.1%)	77	83 (90.2%)	9 (9.8%)	92	97 (90.7%)	10 (9.3%)	107	-16.3	-28.0
Master of Library & Info St	119 (76.3%)	37 (23.7%)	156	119 (75.8%)	38 (24.2%)	157	115 (74.7%)	39 (25.3%)	154	-0.6	+1.3
Master of Science	9 (45.0%)	11 (55.0%)	20	12 (60.0%)	8 (40.0%)	20	7 (43.8%)	9 (56.3%)	16	0.0	+25.0
Total Masters	426 (77.9%)	121 (22.1%)	547	425 (78.6%)	116 (21.4%)	541	432 (80.6%)	104 (19.4%)	536	+1.1	+2.1
Doctoral											

Total (FT and PT) Enrolments by Faculty, by Degree and by Gender

	Fall 2008			Fall 2007			Fall 2003			% Change (1 Years)	% Change (5 Years)
	Female	Male	Total	Female	Male	Total	Female	Male	Total		
Doctor of Philosophy	186 (76.9%)	56 (23.1%)	242	177 (78.0%)	50 (22.0%)	227	161 (75.9%)	51 (24.1%)	212	+6.6	+14.2
Total Doctoral	186 (76.9%)	56 (23.1%)	242	177 (78.0%)	50 (22.0%)	227	161 (75.9%)	51 (24.1%)	212	+6.6	+14.2
Total Masters and Doctoral	612 (77.6%)	177 (22.4%)	789	602 (78.4%)	166 (21.6%)	768	593 (79.3%)	155 (20.7%)	748	+2.7	+5.5
Other Graduate											
Certificates, Diplomas											
Gr Cert Couns Appl to Teaching	1 (100.0%)	0 (0.0%)	1	1 (100.0%)	0 (0.0%)	1	1 (100.0%)	0 (0.0%)	1	0.0	0.0
Gr Cert Educational Leadersh 1	47 (69.1%)	21 (30.9%)	68	45 (73.8%)	16 (26.2%)	61	43 (69.4%)	19 (30.6%)	62	+11.5	+9.7
Gr Cert Educational Leadersh 2	22 (66.7%)	11 (33.3%)	33	29 (70.7%)	12 (29.3%)	41	3 (75.0%)	1 (25.0%)	4	-19.5	+725.0
Gr Cert Educational Leadership	0 (0.0%)	0 (0.0%)	0	0 (0.0%)	0 (0.0%)	0	2 (66.7%)	1 (33.3%)	3	0.0	-100.0
Gr Cert Teaching ESL	9 (81.8%)	2 (18.2%)	11	5 (83.3%)	1 (16.7%)	6	0 (0.0%)	0 (0.0%)	0	+83.3	-
Gr Cert in Library & Info St	1 (50.0%)	1 (50.0%)	2	1 (50.0%)	1 (50.0%)	2	0 (0.0%)	0 (0.0%)	0	0.0	-
Gr Dip in Library & Info St	0 (0.0%)	0 (0.0%)	0	0 (0.0%)	1 (100.0%)	1	0 (0.0%)	0 (0.0%)	0	-100.0	0.0
Total Certificates, Diplomas	80 (69.6%)	35 (30.4%)	115	81 (72.3%)	31 (27.7%)	112	49 (70.0%)	21 (30.0%)	70	+2.7	+64.3
Special, Visiting, Other	8 (66.7%)	4 (33.3%)	12	13 (52.0%)	12 (48.0%)	25	5 (35.7%)	1 (7.1%)	14	-52.0	-14.3
Total Other Graduate	88 (69.3%)	39 (30.7%)	127	94 (68.6%)	43 (31.4%)	137	54 (64.3%)	22 (26.2%)	84	-7.3	+51.2
Total Graduate	700 (76.4%)	216 (23.6%)	916	696 (76.9%)	209 (23.1%)	905	647 (77.8%)	185 (22.2%)	832	+1.2	+10.1

Total (FT and PT) Enrolments by Faculty, by Degree and by Gender

	Fall 2008			Fall 2007			Fall 2003			% Change (1 Years)	% Change (5 Years)
	Female	Male	Total	Female	Male	Total	Female	Male	Total		
Postdoctoral	3 (42.9%)	4 (57.1%)	7	0 (0.0%)	0 (0.0%)	0	1 (50.0%)	1 (50.0%)	2	-	+250.0
Other (Non-credit)											
Continuing Education Unit											
Non-Degree	0 (0.0%)	0 (0.0%)	0	0 (0.0%)	0 (0.0%)	0	0 (0.0%)	1 (100.0%)	1	0.0	-100.0
Total Continuing Education Unit	0 (0.0%)	0 (0.0%)	0	0 (0.0%)	0 (0.0%)	0	0 (0.0%)	1 (100.0%)	1	0.0	-100.0
Total Other (Non-credit)	0 (0.0%)	0 (0.0%)	0	0 (0.0%)	0 (0.0%)	0	0 (0.0%)	1 (100.0%)	1	0.0	-100.0
Total Faculty of Education	2,003 (77.6%)	578 (22.4%)	2,581	1,999 (78.0%)	563 (22.0%)	2,562	2,140 (79.7%)	544 (20.3%)	2,684	+0.7	-3.8

Total (FT and PT) Enrolments by Faculty, by Degree and by Gender

	Fall 2008			Fall 2007			Fall 2003			% Change (1 Years)	% Change (5 Years)
	Female	Male	Total	Female	Male	Total	Female	Male	Total		
Faculty of Engineering											
Undergraduate											
Degrees											
Bachelor of Engineering	467 (19.9%)	1,885 (80.1%)	2,352	474 (20.9%)	1,796 (79.1%)	2,270	537 (26.0%)	1,532 (74.0%)	2,069	+3.6	+13.7
Bachelor of Science (Arch)	123 (70.3%)	52 (29.7%)	175	117 (66.5%)	59 (33.5%)	176	96 (64.0%)	54 (36.0%)	150	-0.6	+16.7
Bachelor of Software Engr	17 (16.5%)	86 (83.5%)	103	24 (23.5%)	78 (76.5%)	102	13 (31.0%)	29 (69.0%)	42	+1.0	+145.2
Total Degrees	607 (23.1%)	2,023 (76.9%)	2,630	615 (24.1%)	1,933 (75.9%)	2,548	646 (28.6%)	1,615 (71.4%)	2,261	+3.2	+16.3
Special, Visiting, Other	25 (28.4%)	63 (71.6%)	88	25 (28.1%)	64 (71.9%)	89	37 (34.6%)	70 (65.4%)	107	-1.1	-17.8
Total Undergraduate	632 (23.3%)	2,086 (76.7%)	2,718	640 (24.3%)	1,997 (75.7%)	2,637	683 (28.8%)	1,685 (71.2%)	2,368	+3.1	+14.8
Graduate											
Masters											
Master of Architecture	54 (54.0%)	46 (46.0%)	100	47 (57.3%)	35 (42.7%)	82	80 (59.3%)	55 (40.7%)	135	+22.0	-25.9
Master of Engineering	76 (24.7%)	232 (75.3%)	308	68 (23.1%)	227 (76.9%)	295	112 (25.5%)	327 (74.5%)	439	+4.4	-29.8
Master of Science	1 (50.0%)	1 (50.0%)	2	1 (50.0%)	1 (50.0%)	2	0 (0.0%)	8 (100.0%)	8	0.0	-75.0
Master of Urban Planning	28 (52.8%)	25 (47.2%)	53	23 (53.5%)	20 (46.5%)	43	23 (48.9%)	24 (51.1%)	47	+23.3	+12.8
Total Masters	159 (34.3%)	304 (65.7%)	463	139 (32.9%)	283 (67.1%)	422	215 (34.2%)	414 (65.8%)	629	+9.7	-26.4

Total (FT and PT) Enrolments by Faculty, by Degree and by Gender

	Fall 2008			Fall 2007			Fall 2003			% Change (1 Years)	% Change (5 Years)
	Female	Male	Total	Female	Male	Total	Female	Male	Total		
Doctoral											
Doctor of Philosophy	101 (23.5%)	329 (76.5%)	430	79 (22.7%)	269 (77.3%)	348	62 (20.1%)	246 (79.9%)	308	+23.6	+39.6
Total Doctoral	101 (23.5%)	329 (76.5%)	430	79 (22.7%)	269 (77.3%)	348	62 (20.1%)	246 (79.9%)	308	+23.6	+39.6
Total Masters and Doctoral	260 (29.1%)	633 (70.9%)	893	218 (28.3%)	552 (71.7%)	770	277 (29.6%)	660 (70.4%)	937	+16.0	-4.7
Other Graduate											
Special, Visiting, Other	5 (16.1%)	26 (83.9%)	31	5 (15.6%)	27 (84.4%)	32	16 (34.8%)	30 (65.2%)	46	-3.1	-32.6
Total Other Graduate	5 (16.1%)	26 (83.9%)	31	5 (15.6%)	27 (84.4%)	32	16 (34.8%)	30 (65.2%)	46	-3.1	-32.6
Total Graduate	265 (28.7%)	659 (71.3%)	924	223 (27.8%)	579 (72.2%)	802	293 (29.8%)	690 (70.2%)	983	+15.2	-6.0
Postdoctoral	9 (26.5%)	25 (73.5%)	34	8 (30.8%)	18 (69.2%)	26	8 (25.8%)	23 (74.2%)	31	+30.8	+9.7
Total Faculty of Engineering	906 (24.6%)	2,770 (75.4%)	3,676	871 (25.1%)	2,594 (74.9%)	3,465	984 (29.1%)	2,398 (70.9%)	3,382	+6.1	+8.7

Total (FT and PT) Enrolments by Faculty, by Degree and by Gender

	Fall 2008			Fall 2007			Fall 2003			% Change (1 Years)	% Change (5 Years)
	Female	Male	Total	Female	Male	Total	Female	Male	Total		
Faculty of Law											
Undergraduate											
Degrees											
Bach of Civil Law Bach of Laws	348 (54.7%)	288 (45.3%)	636	352 (55.3%)	284 (44.7%)	636	324 (55.9%)	256 (44.1%)	580	0.0	+9.7
Total Degrees	348 (54.7%)	288 (45.3%)	636	352 (55.3%)	284 (44.7%)	636	324 (55.9%)	256 (44.1%)	580	0.0	+9.7
Special, Visiting, Other	27 (73.0%)	10 (27.0%)	37	27 (65.9%)	14 (34.1%)	41	28 (80.0%)	7 (20.0%)	35	-9.8	+5.7
Total Undergraduate	375 (55.7%)	298 (44.3%)	673	379 (56.0%)	298 (44.0%)	677	352 (57.2%)	263 (42.8%)	615	-0.6	+9.4
Graduate											
Masters											
Master of Laws	44 (53.0%)	39 (47.0%)	83	43 (50.6%)	42 (49.4%)	85	53 (50.0%)	53 (50.0%)	106	-2.4	-21.7
Total Masters	44 (53.0%)	39 (47.0%)	83	43 (50.6%)	42 (49.4%)	85	53 (50.0%)	53 (50.0%)	106	-2.4	-21.7
Doctoral											
Doctor of Civil Law	22 (44.0%)	28 (56.0%)	50	23 (47.9%)	25 (52.1%)	48	15 (50.0%)	15 (50.0%)	30	+4.2	+66.7
Total Doctoral	22 (44.0%)	28 (56.0%)	50	23 (47.9%)	25 (52.1%)	48	15 (50.0%)	15 (50.0%)	30	+4.2	+66.7
Total Masters and Doctoral	66 (49.6%)	67 (50.4%)	133	66 (49.6%)	67 (50.4%)	133	68 (50.0%)	68 (50.0%)	136	0.0	-2.2
Other Graduate											
Certificates, Diplomas											

Total (FT and PT) Enrolments by Faculty, by Degree and by Gender

	Fall 2008			Fall 2007			Fall 2003			% Change (1 Years)	% Change (5 Years)
	Female	Male	Total	Female	Male	Total	Female	Male	Total		
Gr Cert Air and Space Law	1 (50.0%)	1 (50.0%)	2	1 (25.0%)	3 (75.0%)	4	3 (42.9%)	4 (57.1%)	7	-50.0	-71.4
Gr Cert in Comparative Law	0 (0.0%)	0 (0.0%)	0	1 (50.0%)	1 (50.0%)	2	3 (60.0%)	2 (40.0%)	5	-100.0	-100.0
Total Certificates, Diplomas	1 (50.0%)	1 (50.0%)	2	2 (33.3%)	4 (66.7%)	6	6 (50.0%)	6 (50.0%)	12	-66.7	-83.3
Total Other Graduate	1 (50.0%)	1 (50.0%)	2	2 (33.3%)	4 (66.7%)	6	6 (50.0%)	6 (50.0%)	12	-66.7	-83.3
Total Graduate	67 (49.6%)	68 (50.4%)	135	68 (48.9%)	71 (51.1%)	139	74 (50.0%)	74 (50.0%)	148	-2.9	-8.8
Postdoctoral	0 (0.0%)	1 (100.0%)	1	1 (50.0%)	1 (50.0%)	2	0 (0.0%)	0 (0.0%)	0	-50.0	-
Total Faculty of Law	442 (54.6%)	367 (45.4%)	809	448 (54.8%)	370 (45.2%)	818	426 (55.8%)	337 (44.2%)	763	-1.1	+6.0

Total (FT and PT) Enrolments by Faculty, by Degree and by Gender

	Fall 2008			Fall 2007			Fall 2003			% Change (1 Years)	% Change (5 Years)
	Female	Male	Total	Female	Male	Total	Female	Male	Total		
Faculty of Medicine											
Undergraduate											
Degrees											
B SC (Occ Ther-Non Practing)	79 (85.9%)	13 (14.1%)	92	39 (81.3%)	9 (18.8%)	48	0 (0.0%)	0 (0.0%)	0	+91.7	-
B SC (Occupational Therapy)	48 (84.2%)	9 (15.8%)	57	100 (90.1%)	11 (9.9%)	111	132 (91.0%)	13 (9.0%)	145	-48.6	-60.7
B SC (Phy Ther-Non Practicing)	82 (65.1%)	44 (34.9%)	126	51 (76.1%)	16 (23.9%)	67	0 (0.0%)	0 (0.0%)	0	+88.1	-
B SC (Physical Therapy)	42 (79.2%)	11 (20.8%)	53	88 (78.6%)	24 (21.4%)	112	139 (80.8%)	33 (19.2%)	172	-52.7	-69.2
Bachelor of Nursing	160 (92.0%)	14 (8.0%)	174	171 (95.0%)	9 (5.0%)	180	30 (100.0%)	0 (0.0%)	30	-3.3	+480.0
Bachelor of Science (Nursing)	206 (89.6%)	24 (10.4%)	230	181 (91.0%)	18 (9.0%)	199	148 (91.4%)	14 (8.6%)	162	+15.6	+42.0
MDCM	385 (54.8%)	317 (45.2%)	702	385 (55.6%)	308 (44.4%)	693	295 (50.8%)	286 (49.2%)	581	+1.3	+20.8
Total Degrees	1,002 (69.9%)	432 (30.1%)	1,434	1,015 (72.0%)	395 (28.0%)	1,410	744 (68.3%)	346 (31.7%)	1,090	+1.7	+31.6
Special, Visiting, Other	6 (66.7%)	3 (33.3%)	9	4 (66.7%)	2 (33.3%)	6	3 (100.0%)	0 (0.0%)	3	+50.0	+200.0
Total Undergraduate	1,008 (69.9%)	435 (30.1%)	1,443	1,019 (72.0%)	397 (28.0%)	1,416	747 (68.3%)	346 (31.7%)	1,093	+1.9	+32.0
Graduate											
Masters											

Total (FT and PT) Enrolments by Faculty, by Degree and by Gender

	Fall 2008			Fall 2007			Fall 2003			% Change (1 Years)	% Change (5 Years)
	Female	Male	Total	Female	Male	Total	Female	Male	Total		
Master of Engineering	9 (52.9%)	8 (47.1%)	17	10 (45.5%)	12 (54.5%)	22	18 (46.2%)	21 (53.8%)	39	-22.7	-56.4
Master of Science	318 (63.0%)	187 (37.0%)	505	306 (62.7%)	182 (37.3%)	488	256 (59.8%)	172 (40.2%)	428	+3.5	+18.0
Master of Science Applied	215 (83.3%)	43 (16.7%)	258	170 (81.3%)	39 (18.7%)	209	142 (86.1%)	23 (13.9%)	165	+23.4	+56.4
Total Masters	542 (69.5%)	238 (30.5%)	780	486 (67.6%)	233 (32.4%)	719	416 (65.8%)	216 (34.2%)	632	+8.5	+23.4
Doctoral											
Doctor of Philosophy	400 (57.1%)	300 (42.9%)	700	395 (57.2%)	295 (42.8%)	690	351 (56.8%)	267 (43.2%)	618	+1.4	+13.3
Total Doctoral	400 (57.1%)	300 (42.9%)	700	395 (57.2%)	295 (42.8%)	690	351 (56.8%)	267 (43.2%)	618	+1.4	+13.3
Total Masters and Doctoral	942 (63.6%)	538 (36.4%)	1,480	881 (62.5%)	528 (37.5%)	1,409	767 (61.4%)	483 (38.6%)	1,250	+5.0	+18.4
Other Graduate											
Certificates, Diplomas											
Gr Cert in Assessing Driv Cap	12 (92.3%)	1 (7.7%)	13	15 (88.2%)	2 (11.8%)	17	0 (0.0%)	0 (0.0%)	0	-23.5	-
Gr Dip in Clinical Research	5 (83.3%)	1 (16.7%)	6	6 (66.7%)	3 (33.3%)	9	3 (75.0%)	1 (25.0%)	4	-33.3	+50.0
Gr Dip in Epidemiol & Health	0 (0.0%)	1 (100.0%)	1	0 (0.0%)	2 (100.0%)	2	4 (100.0%)	0 (0.0%)	4	-50.0	-75.0
Gr Dip in Nursing	3 (100.0%)	0 (0.0%)	3	0 (0.0%)	0 (0.0%)	0	0 (0.0%)	0 (0.0%)	0	-	-
Total Certificates, Diplomas	20 (87.0%)	3 (13.0%)	23	21 (75.0%)	7 (25.0%)	28	7 (87.5%)	1 (12.5%)	8	-17.9	+187.5

Total (FT and PT) Enrolments by Faculty, by Degree and by Gender

	Fall 2008			Fall 2007			Fall 2003			% Change (1 Years)	% Change (5 Years)
	Female	Male	Total	Female	Male	Total	Female	Male	Total		
Special, Visiting, Other	5 (35.7%)	9 (64.3%)	14	23 (62.2%)	14 (37.8%)	37	16 (64.0%)	9 (36.0%)	25	-62.2	-44.0
Total Other Graduate	25 (67.6%)	12 (32.4%)	37	44 (67.7%)	21 (32.3%)	65	23 (69.7%)	10 (30.3%)	33	-43.1	+12.1
Total Graduate	967 (63.7%)	550 (36.3%)	1,517	925 (62.8%)	549 (37.2%)	1,474	790 (61.6%)	493 (38.4%)	1,283	+2.9	+18.2
Postdoctoral	150 (47.5%)	166 (52.5%)	316	138 (47.3%)	154 (52.7%)	292	132 (53.0%)	117 (47.0%)	249	+8.2	+26.9
Residents and Fellows											
Clinical Fellow	84 (27.4%)	223 (72.6%)	307	92 (29.3%)	222 (70.7%)	314	71 (28.3%)	180 (71.7%)	251	-2.2	+22.3
Clinical/Research Fellow	4 (44.4%)	5 (55.6%)	9	2 (28.6%)	5 (71.4%)	7	0 (0.0%)	0 (0.0%)	0	+28.6	-
Medical Resident	327 (51.5%)	308 (48.5%)	635	297 (50.1%)	296 (49.9%)	593	229 (42.6%)	308 (57.4%)	537	+7.1	+18.2
Total Residents and Fellows	415 (43.6%)	536 (56.4%)	951	391 (42.8%)	523 (57.2%)	914	300 (38.1%)	488 (61.9%)	788	+4.0	+20.7
Total Faculty of Medicine	2,540 (60.1%)	1,687 (39.9%)	4,227	2,473 (60.4%)	1,623 (39.6%)	4,096	1,969 (57.7%)	1,444 (42.3%)	3,413	+3.2	+23.8

Total (FT and PT) Enrolments by Faculty, by Degree and by Gender

	Fall 2008			Fall 2007			Fall 2003			% Change (1 Years)	% Change (5 Years)
	Female	Male	Total	Female	Male	Total	Female	Male	Total		
Desautels Faculty Management											
Undergraduate											
Degrees											
Bachelor of Commerce	1,268 (52.4%)	1,150 (47.6%)	2,418	1,330 (53.3%)	1,167 (46.7%)	2,497	1,117 (53.8%)	959 (46.2%)	2,076	-3.2	+16.5
Total Degrees	1,268 (52.4%)	1,150 (47.6%)	2,418	1,330 (53.3%)	1,167 (46.7%)	2,497	1,117 (53.8%)	959 (46.2%)	2,076	-3.2	+16.5
Special, Visiting, Other	46 (47.9%)	50 (52.1%)	96	32 (43.2%)	42 (56.8%)	74	26 (51.0%)	25 (49.0%)	51	+29.7	+88.2
Total Undergraduate	1,314 (52.3%)	1,200 (47.7%)	2,514	1,362 (53.0%)	1,209 (47.0%)	2,571	1,143 (53.7%)	984 (46.3%)	2,127	-2.2	+18.2
Graduate											
Masters											
Master of Business Admin	110 (29.8%)	259 (70.2%)	369	109 (31.3%)	239 (68.7%)	348	152 (28.4%)	383 (71.6%)	535	+6.0	-31.0
Master of Management	19 (32.2%)	40 (67.8%)	59	16 (20.3%)	63 (79.7%)	79	11 (14.3%)	66 (85.7%)	77	-25.3	-23.4
Total Masters	129 (30.1%)	299 (69.9%)	428	125 (29.3%)	302 (70.7%)	427	163 (26.6%)	449 (73.4%)	612	+0.2	-30.1
Doctoral											
Doctor of Philosophy	30 (36.1%)	53 (63.9%)	83	29 (36.7%)	50 (63.3%)	79	25 (37.3%)	42 (62.7%)	67	+5.1	+23.9
Total Doctoral	30 (36.1%)	53 (63.9%)	83	29 (36.7%)	50 (63.3%)	79	25 (37.3%)	42 (62.7%)	67	+5.1	+23.9
Total Masters and Doctoral	159 (31.1%)	352 (68.9%)	511	154 (30.4%)	352 (69.6%)	506	188 (27.7%)	491 (72.3%)	679	+1.0	-24.7
Other Graduate											
Certificates, Diplomas											

Total (FT and PT) Enrolments by Faculty, by Degree and by Gender

	Fall 2008			Fall 2007			Fall 2003			% Change (1 Years)	% Change (5 Years)
	Female	Male	Total	Female	Male	Total	Female	Male	Total		
Gr Dip in Public Accountancy	50 (63.3%)	29 (36.7%)	79	44 (52.4%)	40 (47.6%)	84	30 (50.8%)	29 (49.2%)	59	-6.0	+33.9
Post MBA Gr Cert	7 (36.8%)	12 (63.2%)	19	5 (21.7%)	18 (78.3%)	23	10 (33.3%)	20 (66.7%)	30	-17.4	-36.7
Total Certificates, Diplomas	57 (58.2%)	41 (41.8%)	98	49 (45.8%)	58 (54.2%)	107	40 (44.9%)	49 (55.1%)	89	-8.4	+10.1
Special, Visiting, Other	12 (52.2%)	11 (47.8%)	23	7 (26.9%)	19 (73.1%)	26	11 (34.4%)	21 (65.6%)	32	-11.5	-28.1
Total Other Graduate	69 (57.0%)	52 (43.0%)	121	56 (42.1%)	77 (57.9%)	133	51 (42.1%)	70 (57.9%)	121	-9.0	0.0
Total Graduate	228 (36.1%)	404 (63.9%)	632	210 (32.9%)	429 (67.1%)	639	239 (29.9%)	561 (70.1%)	800	-1.1	-21.0
Postdoctoral	1 (25.0%)	3 (75.0%)	4	1 (50.0%)	1 (50.0%)	2	2 (66.7%)	1 (33.3%)	3	+100.0	+33.3
Total Desautels Faculty Management	1,543 (49.0%)	1,607 (51.0%)	3,150	1,573 (49.0%)	1,639 (51.0%)	3,212	1,384 (47.2%)	1,546 (52.8%)	2,930	-1.9	+7.5

Total (FT and PT) Enrolments by Faculty, by Degree and by Gender

	Fall 2008			Fall 2007			Fall 2003			% Change (1 Years)	% Change (5 Years)
	Female	Male	Total	Female	Male	Total	Female	Male	Total		
Schulich School of Music											
Undergraduate											
Degrees											
Bachelor of Music	241 (47.8%)	263 (52.2%)	504	238 (48.2%)	256 (51.8%)	494	267 (51.1%)	255 (48.9%)	522	+2.0	-3.4
Licentiate in Music	13 (59.1%)	9 (40.9%)	22	15 (57.7%)	11 (42.3%)	26	25 (65.8%)	13 (34.2%)	38	-15.4	-42.1
Total Degrees	254 (48.3%)	272 (51.7%)	526	253 (48.7%)	267 (51.3%)	520	292 (52.1%)	268 (47.9%)	560	+1.2	-6.1
Certificates, Diplomas											
Artist Diploma	10 (62.5%)	6 (37.5%)	16	7 (70.0%)	3 (30.0%)	10	15 (65.2%)	8 (34.8%)	23	+60.0	-30.4
Total Certificates, Diplomas	10 (62.5%)	6 (37.5%)	16	7 (70.0%)	3 (30.0%)	10	15 (65.2%)	8 (34.8%)	23	+60.0	-30.4
Special, Visiting, Other	5 (26.3%)	14 (73.7%)	19	6 (40.0%)	9 (60.0%)	15	7 (30.4%)	16 (69.6%)	23	+26.7	-17.4
Total Undergraduate	269 (48.0%)	292 (52.0%)	561	266 (48.8%)	279 (51.2%)	545	314 (51.8%)	292 (48.2%)	606	+2.9	-7.4
Graduate											
Masters											
Master of Arts	14 (43.8%)	18 (56.3%)	32	13 (41.9%)	18 (58.1%)	31	14 (50.0%)	14 (50.0%)	28	+3.2	+14.3
Master of Music	82 (55.8%)	65 (44.2%)	147	74 (52.5%)	67 (47.5%)	141	53 (48.2%)	57 (51.8%)	110	+4.3	+33.6
Total Masters	96 (53.6%)	83 (46.4%)	179	87 (50.6%)	85 (49.4%)	172	67 (48.6%)	71 (51.4%)	138	+4.1	+29.7
Doctoral											

Total (FT and PT) Enrolments by Faculty, by Degree and by Gender

	Fall 2008			Fall 2007			Fall 2003			% Change (1 Years)	% Change (5 Years)
	Female	Male	Total	Female	Male	Total	Female	Male	Total		
Doctor of Music	18 (47.4%)	20 (52.6%)	38	16 (42.1%)	22 (57.9%)	38	13 (52.0%)	12 (48.0%)	25	0.0	+52.0
Doctor of Philosophy	21 (32.3%)	44 (67.7%)	65	17 (30.4%)	39 (69.6%)	56	19 (65.5%)	10 (34.5%)	29	+16.1	+124.1
Total Doctoral	39 (37.9%)	64 (62.1%)	103	33 (35.1%)	61 (64.9%)	94	32 (59.3%)	22 (40.7%)	54	+9.6	+90.7
Total Masters and Doctoral	135 (47.9%)	147 (52.1%)	282	120 (45.1%)	146 (54.9%)	266	99 (51.6%)	93 (48.4%)	192	+6.0	+46.9
Other Graduate											
Special, Visiting, Other	1 (20.0%)	4 (80.0%)	5	0 (0.0%)	0 (0.0%)	0	0 (0.0%)	0 (0.0%)	0	-	-
Total Other Graduate	1 (20.0%)	4 (80.0%)	5	0 (0.0%)	0 (0.0%)	0	0 (0.0%)	0 (0.0%)	0	-	-
Total Graduate	136 (47.4%)	151 (52.6%)	287	120 (45.1%)	146 (54.9%)	266	99 (51.6%)	93 (48.4%)	192	+7.9	+49.5
Postdoctoral	0 (0.0%)	2 (100.0%)	2	0 (0.0%)	5 (100.0%)	5	0 (0.0%)	0 (0.0%)	0	-60.0	-
Total Schulich School of Music	405 (47.6%)	445 (52.4%)	850	386 (47.3%)	430 (52.7%)	816	413 (51.8%)	385 (48.2%)	798	+4.2	+6.5

Total (FT and PT) Enrolments by Faculty, by Degree and by Gender

	Fall 2008			Fall 2007			Fall 2003			% Change (1 Years)	% Change (5 Years)
	Female	Male	Total	Female	Male	Total	Female	Male	Total		
Faculty of Religious Studies											
Undergraduate											
Degrees											
Bachelor of Theology	17 (51.5%)	16 (48.5%)	33	23 (51.1%)	22 (48.9%)	45	22 (56.4%)	17 (43.6%)	39	-26.7	-15.4
Total Degrees	17 (51.5%)	16 (48.5%)	33	23 (51.1%)	22 (48.9%)	45	22 (56.4%)	17 (43.6%)	39	-26.7	-15.4
Special, Visiting, Other	1 (33.3%)	2 (66.7%)	3	6 (75.0%)	2 (25.0%)	8	0 (0.0%)	4 (100.0%)	4	-62.5	-25.0
Total Undergraduate	18 (50.0%)	18 (50.0%)	36	29 (54.7%)	24 (45.3%)	53	22 (51.2%)	21 (48.8%)	43	-32.1	-16.3
Graduate											
Masters											
Master of Arts	14 (45.2%)	17 (54.8%)	31	8 (29.6%)	19 (70.4%)	27	16 (45.7%)	19 (54.3%)	35	+14.8	-11.4
Master of Sacred Theology	0 (0.0%)	0 (0.0%)	0	0 (0.0%)	1 (100.0%)	1	2 (100.0%)	0 (0.0%)	2	-100.0	-100.0
Total Masters	14 (45.2%)	17 (54.8%)	31	8 (28.6%)	20 (71.4%)	28	18 (48.6%)	19 (51.4%)	37	+10.7	-16.2
Doctoral											
Doctor of Philosophy	16 (34.8%)	30 (65.2%)	46	13 (32.5%)	27 (67.5%)	40	10 (32.3%)	21 (67.7%)	31	+15.0	+48.4
Total Doctoral	16 (34.8%)	30 (65.2%)	46	13 (32.5%)	27 (67.5%)	40	10 (32.3%)	21 (67.7%)	31	+15.0	+48.4
Total Masters and Doctoral	30 (39.0%)	47 (61.0%)	77	21 (30.9%)	47 (69.1%)	68	28 (41.2%)	40 (58.8%)	68	+13.2	+13.2
Other Graduate											

Total (FT and PT) Enrolments by Faculty, by Degree and by Gender

	Fall 2008			Fall 2007			Fall 2003			% Change (1 Years)	% Change (5 Years)
	Female	Male	Total	Female	Male	Total	Female	Male	Total		
Special, Visiting, Other	0 (0.0%)	1 (100.0%)	1	0 (0.0%)	0 (0.0%)	0	2 (100.0%)	0 (0.0%)	2	-	-50.0
Total Other Graduate	0 (0.0%)	1 (100.0%)	1	0 (0.0%)	0 (0.0%)	0	2 (100.0%)	0 (0.0%)	2	-	-50.0
Total Graduate	30 (38.5%)	48 (61.5%)	78	21 (30.9%)	47 (69.1%)	68	30 (42.9%)	40 (57.1%)	70	+14.7	+11.4
Postdoctoral	0 (0.0%)	1 (100.0%)	1	0 (0.0%)	1 (100.0%)	1	0 (0.0%)	0 (0.0%)	0	0.0	-
Total Faculty of Religious Studies	48 (41.7%)	67 (58.3%)	115	50 (41.0%)	72 (59.0%)	122	52 (46.0%)	61 (54.0%)	113	-5.7	+1.8

Total (FT and PT) Enrolments by Faculty, by Degree and by Gender

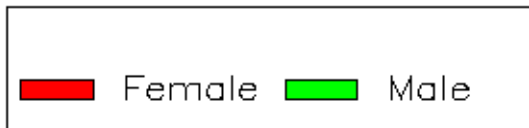
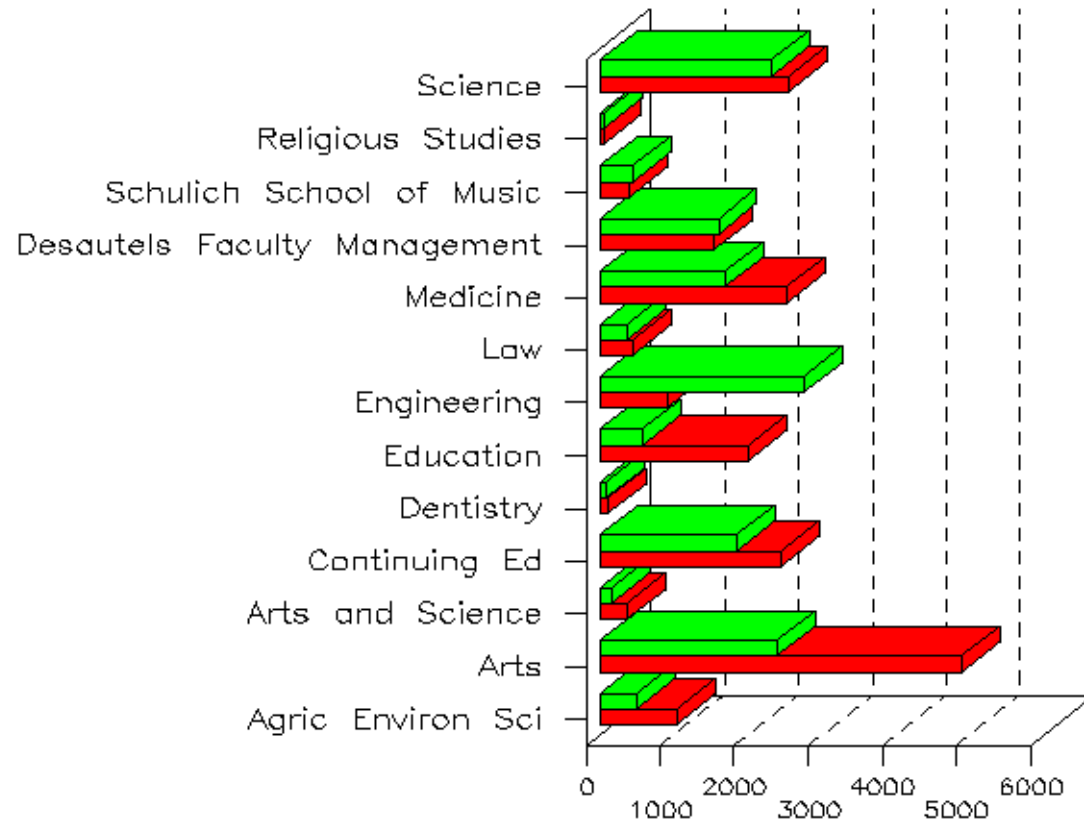
	Fall 2008			Fall 2007			Fall 2003			% Change (1 Years)	% Change (5 Years)
	Female	Male	Total	Female	Male	Total	Female	Male	Total		
Faculty of Science											
Undergraduate											
Degrees											
Bachelor of Science	2,141 (56.3%)	1,664 (43.7%)	3,805	2,079 (56.2%)	1,623 (43.8%)	3,702	2,258 (59.5%)	1,538 (40.5%)	3,796	+2.8	+0.2
Total Degrees	2,141 (56.3%)	1,664 (43.7%)	3,805	2,079 (56.2%)	1,623 (43.8%)	3,702	2,258 (59.5%)	1,538 (40.5%)	3,796	+2.8	+0.2
Certificates, Diplomas											
Diploma in Environment	2 (100.0%)	0 (0.0%)	2	1 (100.0%)	0 (0.0%)	1	2 (50.0%)	2 (50.0%)	4	+100.0	-50.0
Diploma in Meteorology	0 (0.0%)	0 (0.0%)	0	0 (0.0%)	1 (100.0%)	1	1 (100.0%)	0 (0.0%)	1	-100.0	-100.0
Total Certificates, Diplomas	2 (100.0%)	0 (0.0%)	2	1 (50.0%)	1 (50.0%)	2	3 (60.0%)	2 (40.0%)	5	0.0	-60.0
Special, Visiting, Other	56 (55.4%)	45 (44.6%)	101	77 (62.6%)	46 (37.4%)	123	65 (52.0%)	60 (48.0%)	125	-17.9	-19.2
Total Undergraduate	2,199 (56.3%)	1,709 (43.7%)	3,908	2,157 (56.4%)	1,670 (43.6%)	3,827	2,326 (59.2%)	1,600 (40.8%)	3,926	+2.1	-0.5
Graduate											
Masters											
Master of Arts	9 (52.9%)	8 (47.1%)	17	6 (66.7%)	3 (33.3%)	9	11 (57.9%)	8 (42.1%)	19	+88.9	-10.5
Master of Science	119 (39.3%)	184 (60.7%)	303	108 (35.5%)	196 (64.5%)	304	148 (37.9%)	242 (62.1%)	390	-0.3	-22.3
Total Masters	128 (40.0%)	192 (60.0%)	320	114 (36.4%)	199 (63.6%)	313	159 (38.9%)	250 (61.1%)	409	+2.2	-21.8
Doctoral											

Total (FT and PT) Enrolments by Faculty, by Degree and by Gender

	Fall 2008			Fall 2007			Fall 2003			% Change (1 Years)	% Change (5 Years)
	Female	Male	Total	Female	Male	Total	Female	Male	Total		
Doctor of Philosophy	195 (37.9%)	319 (62.1%)	514	195 (39.0%)	305 (61.0%)	500	159 (38.6%)	253 (61.4%)	412	+2.8	+24.8
Total Doctoral	195 (37.9%)	319 (62.1%)	514	195 (39.0%)	305 (61.0%)	500	159 (38.6%)	253 (61.4%)	412	+2.8	+24.8
Total Masters and Doctoral	323 (38.7%)	511 (61.3%)	834	309 (38.0%)	504 (62.0%)	813	318 (38.7%)	503 (61.3%)	821	+2.6	+1.6
Other Graduate											
Special, Visiting, Other	11 (39.3%)	17 (60.7%)	28	9 (32.1%)	19 (67.9%)	28	5 (33.3%)	10 (66.7%)	15	0.0	+86.7
Total Other Graduate	11 (39.3%)	17 (60.7%)	28	9 (32.1%)	19 (67.9%)	28	5 (33.3%)	10 (66.7%)	15	0.0	+86.7
Total Graduate	334 (38.7%)	528 (61.3%)	862	318 (37.8%)	523 (62.2%)	841	323 (38.6%)	513 (61.4%)	836	+2.5	+3.1
Postdoctoral	28 (25.2%)	83 (74.8%)	111	30 (30.9%)	67 (69.1%)	97	20 (21.5%)	73 (78.5%)	93	+14.4	+19.4
Total Faculty of Science	2,561 (52.5%)	2,320 (47.5%)	4,881	2,505 (52.6%)	2,260 (47.4%)	4,765	2,669 (55.0%)	2,186 (45.0%)	4,855	+2.4	+0.5

Total (FT and PT) Enrolments by Faculty, by Degree and by Gender

Enrolment Statistics Chart
by Faculty and by Gender



Total (FT and PT) Enrolments by Faculty, by Degree and by Gender

Undergraduate numbers are based on "levels" that are defined as: Undergraduate, Dentistry/Law/Medicine.

Graduate numbers are based on "levels" that are defined as: Masters, Graduate Diplomas and Certificates, Doctorate, Graduate Qualifying.

Residents and Fellows numbers are based on "levels" that are defined as: Post Graduate Medicine/Dentistry.

Full-time "loads" for the 2008 and 2007 terms includes: full-time, non-resident, thesis full-time, thesis additional session, visiting additional session, and non resident exchange.

The pre-200209 legacy term (pre-Banner) includes: full-time, additional session and non-resident.

Part-time "loads" for the 2008 and 2007 terms includes: part-time, Continuing Education, leave of absence, no credits, thesis half-time and unknown time status. The pre-200209 legacy term (pre-Banner) includes: part-time, Continuing Education, session of admission, thesis continuing, session of graduation, half-time, and leave of absence.

As of fall 2004, the non resident exchange students are reported under full-time "load".

These statistics are headcounts of students, based on their primary curriculum.

"Faculties of Arts and Science" includes students that are registered in both Arts and Science and are pursuing the B.A.&Sc. degree.

The SUMMARY now appears in the first part of the report and is a COUNT for all students and the following pages contains a DETAILED breakdown.

Note: 2008 registration totals based on October 15, 2008.
2007 registration totals based on October 15, 2007.
2003 registration totals based on October 15, 2003.