

How to set up the Meeting Owl:

1. Take the Meeting Owl and the adapter out of the box.
2. Plug the adapter cable in the wall socket and the Owl.

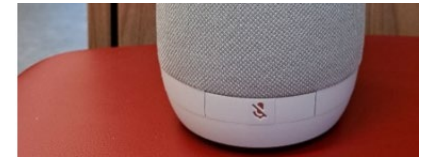


3. Use the USB cable to connect your laptop/desktop to the Owl.
 - a. If the computer has a USB-C connection, use the USB-C / USB-C cable
 - b. If the computer has a USB-A connection, use the USB-A / USB C cable



How to adjust the volume:

Click on the '+' and '-' buttons on the to increase or lower the volume.
Click on the microphone button to mute the sound.

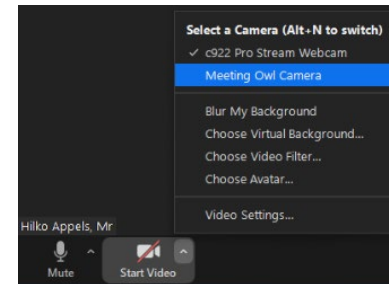


Projecting the Meeting Owl:

Plug the Meeting Owl to your laptop and connect the laptop or desktop through the Crestron, choose the input and project as you would a PowerPoint presentation.

How to use the Meeting Owl's camera and microphone

Open the video application (Teams, Zoom, Skype) and start/join your meeting.
Click on the arrow next to the video/camera and choose the Meeting Owl Camera.
Once the camera is turned on, the video will focus on the active speaker and show a panorama of everyone present.



Click on the little arrow next to the audio/microphone and choose Echo Cancelling Speakerphone (Meeting Owl)

