



CRCF NEWS

Volume 3, Number 3
March 2018

CENTRE FOR RESEARCH
ON CHILDREN AND FAMILIES  CENTRE DE RECHERCHE
SUR L'ENFANCE ET LA FAMILLE

CRCF NEWS provides a monthly update about calls for papers and proposals, conferences and trainings, job opportunities, new research and other news of interest to the CRCF community. We encourage our subscribers to submit postings to pamela.weightman@mcgill.ca to help us stay relevant to the broad range of CRCF research interests. Spread the word! Forward this email to colleagues and students.

[Like us on Facebook](#)

[Visit our website](#)

[Conferences & Trainings](#)

[Events](#)

[Job/Scholarship Opportunities](#)

[News & Notices](#)

[Publications & Presentations](#)

Conferences & Trainings

Complex Trauma Symposium: Canadian Perspectives and Initiatives - Symposium Trauma Complexe: Perspectives et initiatives canadiennes

Registration opens Mar 15



The CRCF is organizing a complex trauma symposium that will feature Dr. Bessel van der Kolk, director of the Trauma Centre at Justice Resource Institute, and world leader in complex trauma research and treatment. In addition to this renowned guest, there will be several researchers and clinicians who will discuss promising advances in practice settings in Quebec and Ontario. There will be presentations in French and English and access to simultaneous translation as needed. It will certainly be a great success!

The symposium will take place at the Grande Bibliothèque in Montreal on June 14th and 15th, 2018. Registration will begin on March 15th. There are 250 places and they will be quickly filled! For more information, please click [here](#).

Nous organisons un symposium sur le trauma complexe qui mettra en vedette Dr. Bessel van der Kolk, le directeur du Trauma Centre at Justice Resource Institute et *leader* mondial dans le domaine du trauma complexe. Outre cet invité de renom, nous serons plusieurs chercheurs et intervenants/cliniciens à prendre la parole pour discuter des avancées prometteuses dans les milieux de pratique du Québec et de l'Ontario. Il y aura des présentations en français et en anglais et accès à de la traduction simultanée au besoin. Ce sera assurément un grand succès! Le symposium prendra place à la Grande Bibliothèque à Montréal les 14 et 15 juin 2018. Les inscriptions débuteront le 15 mars. Il y a 250 places et elles seront vite comblées! Veuillez cliquer [ici](#) pour plus d'informations.

MEd Interdisciplinary Program

Poo'miikapii: Niitsitapii Approaches to Wellness

Application deadline Mar 15

Poo'miikapii: Niitsitapii Approaches to Wellness is a topic (4-courses, 12 units) offered as part of the Interdisciplinary Master of Education (MEd) program at the University of Calgary. Click [here](#) for more information.

Events

Indigenous Child Welfare Research Group

Mar 1 12:00 – 14:00

Apr 5 12:00 – 14:00

CRCF conference room (suite 106), 3506 rue University

A monthly discussion group of graduate students, faculty and researchers as well as professionals from university affiliated organizations. Aimed at building empirical knowledge on topics related to Indigenous child welfare and to facilitate knowledge translation of Indigenous child welfare research. Click [here](#) for more information.

Qualitative Data Analysis Group (QDAG)

Mar 7 9:00 – 16:00

Mar 21 9:00 – 16:00

Mar 28 9:00 – 16:00

Center for Research on Children and Families, suite 106, 3506 rue University

The QDAG is a space for social work doctoral students to work independently with others to be able to ask questions as they emerge during data analysis. The QDAG is not a discussion group. It is a work-focused group to move students forward through the data analysis phase of the dissertation with the support of others. For more information and for the upcoming meeting times, please contact [Gina Glidden](#) or [Jennifer Nutton](#).



McGill Qualitative Health Research Group meeting with Dr. Gail Teachman, Postdoctoral Fellow, Centre for Research on Children and Families.

Mar 13 15:00 – 17:00

Room #547, Faculty of Dentistry

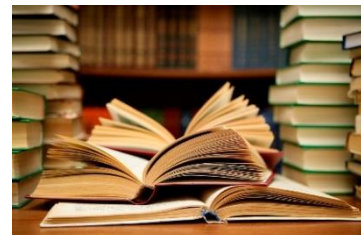
Click [here](#) for more information.

Trans Youth and Families Journal Watch

Mar 14 12:15-13:15

CRCF conference room (suite 106), 3506 rue University

The [Trans Youth and Families Journal Watch](#), aka TYF Watch, is a joint initiative between CRCF and McGill University Sexual Identity Clinic (MUSIC). Every month, we gather together on a



Wednesday at lunch time (12:15 - 13:15) in the CRCF conference room to discuss the most recent peer reviewed journal articles on transgender topics. If you are interested in transgender research, come join us!

For any student at McGill potentially interested in joining or to receive more information, please contact Biru Zhou at irene.beeman@mcgill.ca.



Child Welfare Journal Club

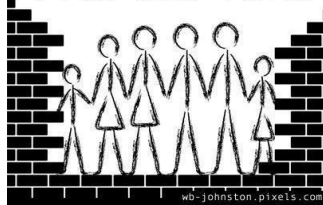
Mar 19 12:05-13:30

CRCF conference room (suite 106), 3506 rue University

The [Child Welfare Journal Club](#) is a joint McGill / University of Toronto initiative supported by funds from the Royal Bank of Canada. It is a monthly journal club for faculty and graduate students interested in child welfare research. We review empirical studies published in the leading child welfare journals and select the most salient and rigorous studies to be summarized and distributed in monthly e-newsletters disseminated through the [Canadian Child Welfare Research Portal \(CWRP\)](#).

For any PhD student at McGill potentially interested in joining the Research Watch team or to receive more information, please contact Biru Zhou at [biru.zhou\(at\)mcgill.ca](mailto:biru.zhou(at)mcgill.ca).

**SOLIDARITY UNITY
TOLERANCE PEACE**



Huddle for Action and Social Justice

CRCF conference room (suite 106), 3506 rue University

Some CRCF members decided to join together to create a Huddle - a gathering of people who wish to define next steps, and envision how to transform the energy shown at the Women's Marches into local and national action. During monthly meetings held on the first Thursday of the month from 2:00 to 3:00 pm at the Centre for Research on Children and Families, Huddlers identify social issues

they are concerned about and develop strategies to act on. Members can also connect by videoconferencing or teleconferencing. For more information or to join the Huddle, please contact [Jennifer Nutton](#).

Job/Scholarship Opportunities

Student seeking research assistant position

Gabrielle Steeves, MSW Q year student, is interested in working at the CRCF. Most of Gabrielle's research experience has related to immigrant and refugee populations as well as youth perceptions of policing. She would also be very interested in the research areas of trauma and resilience, Indigenous youth welfare, LGBTQ+ youth.

Click [here](#) to view Gabrielle's CV.

Agente, agent de support à la recherche

Faculté de sciences humaines, Département de sexologie, UQAM

Click [here](#) for more information.

2 postes menant à la permanence comme professeur(e) adjoint(e)

École de service social, Université Laurentienne

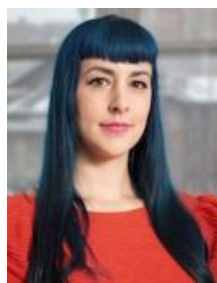
Date limite Le 30 mars 2018 (ou jusqu'à ce que les postes soient pourvus)

Click [here](#) for more information.

News & Notices

Tyson Kelsall and Melanie Doucet are the first recipients of the CRCF Aging Out of Care Scholarship!

The CRCF was bequeathed a generous donation from Mr. Manuel Batshaw, a Canadian social worker who is best known for being the founder of Batshaw Youth and Family Centres (now part of the CIUSSS Ouest-de-l'Île-de-Montréal). Using this donation, the CRCF has created the Aging Out of Care Scholarship in recognition of Mr. Batshaw's life's work and his specific interest in assisting children aging out of care.



The first recipients of this award are CRCF members [Tyson Kelsall](#) and [Melanie Doucet](#). Tyson's MSW thesis is in part informed by access and discriminatory primary interactions with services; and how harm reduction approaches can counteract these. As a youth care worker, Tyson spent time with many youth in care, and witnessed firsthand as they were mistreated and judged by systems that are considered compassionate. Melanie's doctoral

research focuses on an analysis of former youth in care through the examination of the crucial transition period out of the child welfare system. This award will support Melanie in co-authoring an article with Dr. Johanna Greeson from the University of Philadelphia on youth 'aging out' of care in North America. Congratulations to you both!

Special activities at CRCF research seminar

Dr. Nancy Lucero, an indigenous scholar from the University of Denver, presented a CRCF [research seminar](#) on February 14th. Ben Geboe, Yankton Sioux, Denzel Sutherland-Wilson, Gitksan First Nation and Matt Coutu-Moya, Métis, (pictured below, left) opened the meeting with a drumming ceremony. Nancy Lucero presented Delphine Collin-Vézina, Director of the CRCF, with a quilt made by Mary Rich, Hunkpati Dakota from Fort Thompson, South Dakota (pictured below, right).



Congratulations on passing your comprehensive exams [Emmanuel Chilanga](#)!



Publications & Presentations

Articles for CRCF's *ON THE RADAR*



If you are not aware, CRCF's [On the Radar](#) publication is a dissemination initiative that promotes its members research. On the Radar can be used to publish preliminary data, a pilot study, a policy paper or findings from a small project that are not suitable for a journal publication. It can also be used to provide a product to a partner.

Please contact pamela.weightman@mcgill.ca if you would like to submit an article for publication.