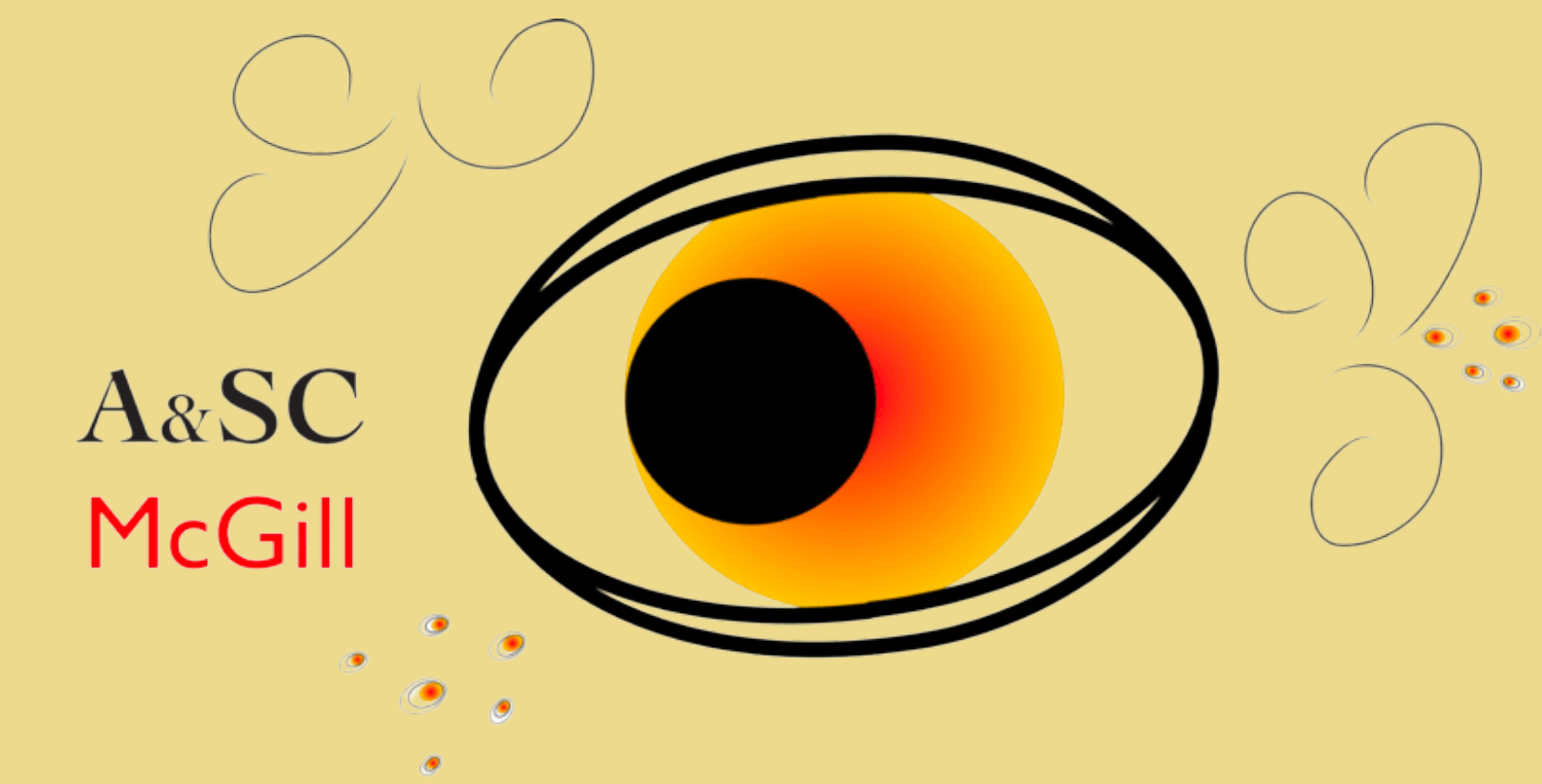


# THE EFFECT OF GAZE CUES ON TEMPORAL ORDER JUDGEMENTS



PHOEBE ZHAO, SARAH D. MCCRACKIN & JELENA RISTIC

MCGILL UNIVERSITY ~ LABORATORY FOR ATTENTION AND SOCIAL COGNITION

PHOEBE.ZHAO@MAIL.MCGILL.CA

## INTRO

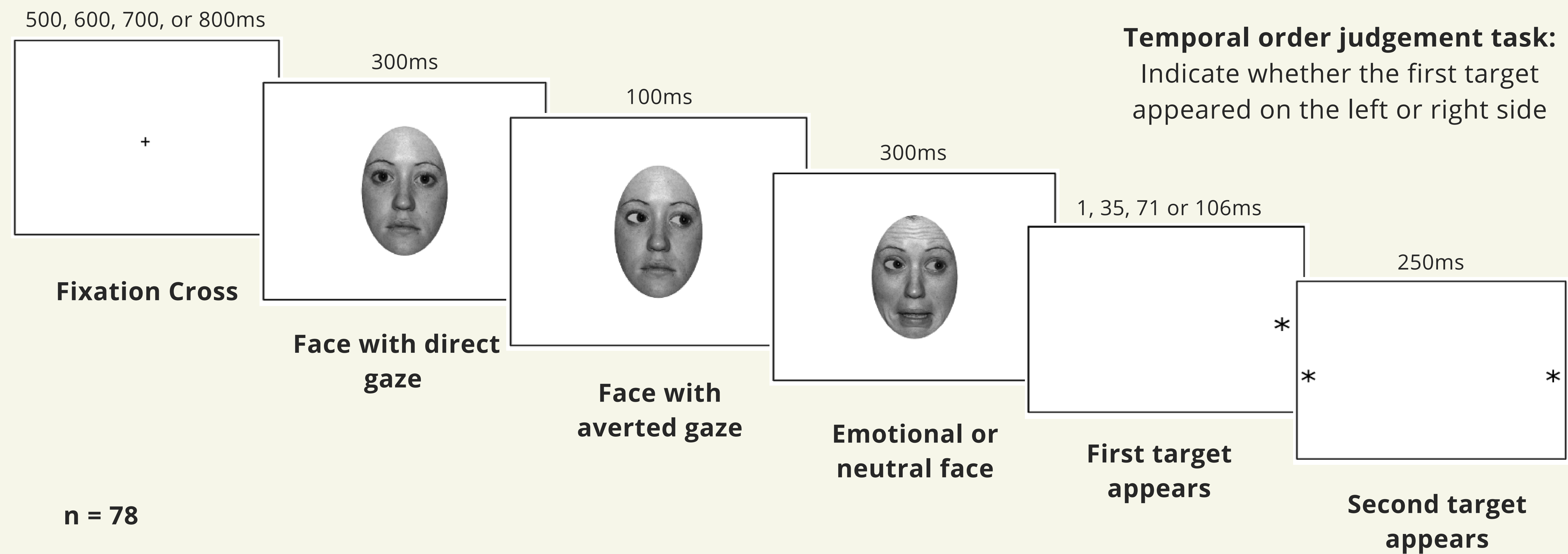
**Gaze cues** are powerful social signals that orient our attention.

There is a lack of research on **gaze cues** and **time perception**.

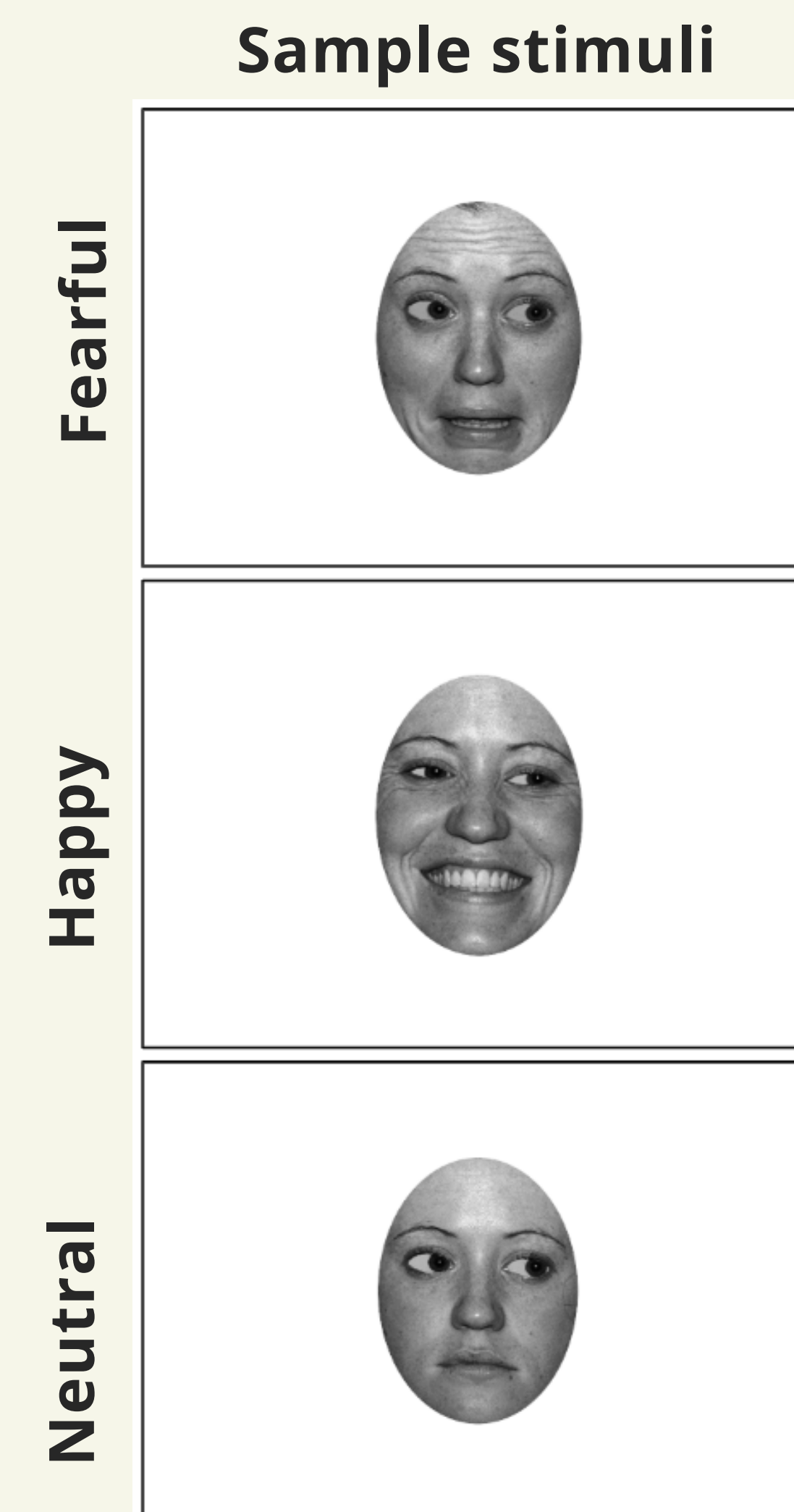
### Our questions:

- (1) Is time perception different for gazed-at targets compared to gazed-away-from targets?
- (2) Do emotional expressions affect this?

## METHODS



n = 78



**Temporal order judgement task:**  
Indicate whether the first target appeared on the left or right side

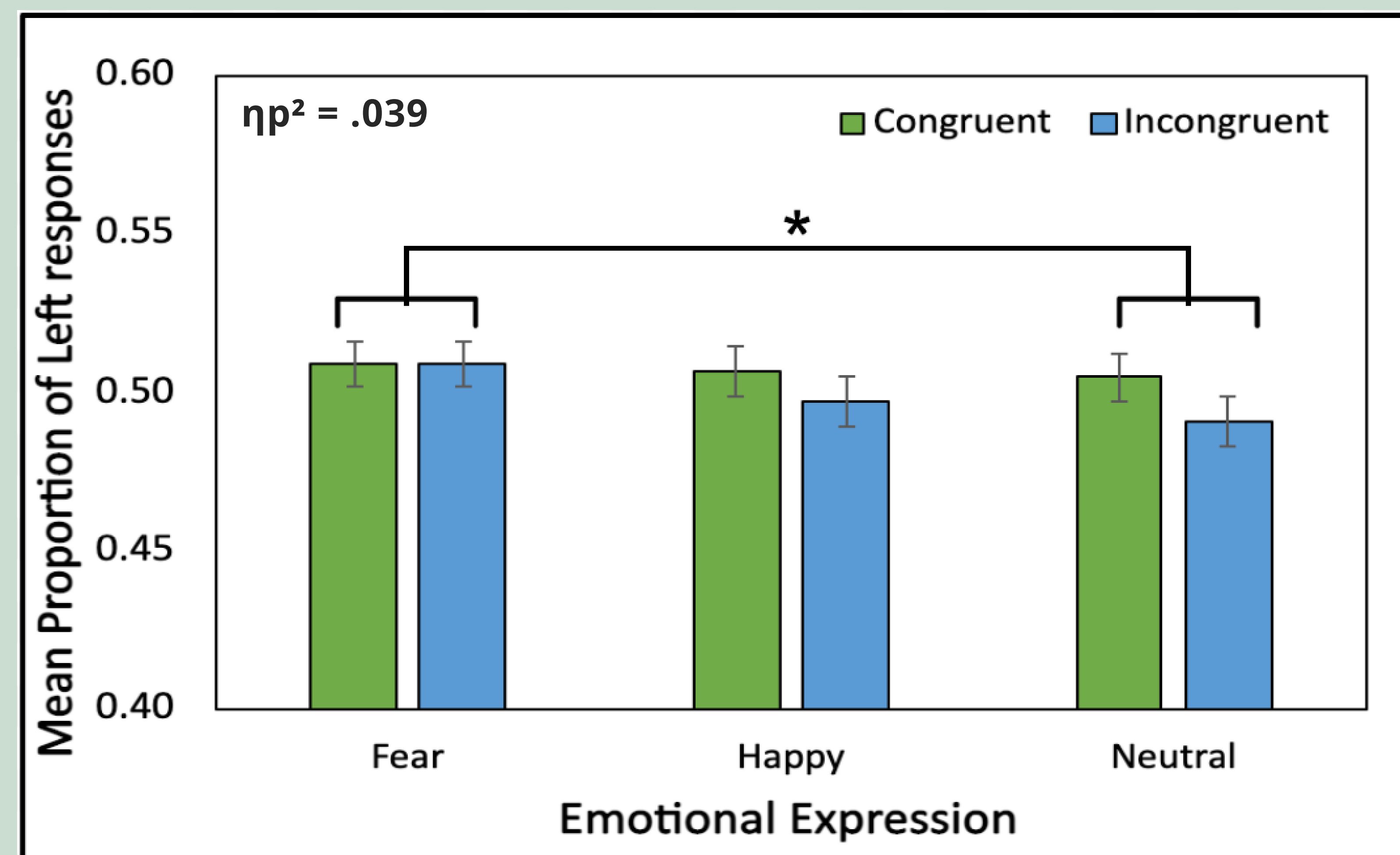
## CONCLUSION

**Higher temporal accuracy** for gaze congruent targets

**Perception of fear** also seems to change time perception

**Possible adaptive reason** for reacting faster to gazed-at targets and emotional targets

### HIGHER PROPORTION OF LEFT RESPONSES FOR FEARFUL TRIALS



## RESULTS

### HIGHER ACCURACY FOR CONGRUENT TRIALS THAN INCONGRUENT TRIALS

