



OMUTENDERA OGWOKUNA: OKWOGELERA

Okuyamba abalwadde bo kinnoomu y'entandikwa y'okubeera n'obulamu obulungi mu bitundu byaffe. Oluusi tewaba kuyambibwa kumala abalwade nebeesanga ngabazeeyo mu mbeera etali nnungi, kyokka nga tusobola okukolera awamu netunyweza enkwatagana mu bitundu byaffe n'okuzzaamu abantu amaanyi okkolera awamu mu kutumbula eby'obulamu mu kitundu.



Weewaawo kino kisobola okutukurira ssinga tukolela wammu ne abakulembeze baffe okuviira ddala ku bakungu b'omu gavumenti, nebannaddiini okutuusiza ddala ku basuubuzi n'ebibiina by'obunnakyewa. Yamba okwongera okunonyereza bannaggwano abasobola okuyamba mukuzimba oba okuteekawo embeera etumbula eby'obulamu kulw'abalwadde mu kitundu kyaffe.

ENGERI Y'OKULEETAMU ENKYUKAKYUKA :

- ➔ Weetabe mu bintu ebikulaakulanya ekitundu.
- ➔ Tandika okwogera n'abantu abaleetawo enjawulo mu kitundu n'abakulembeze b'omubitundu.
- ➔ Tumbula okumanya ku ngeri embeera zaffe aza bulijjo bwezisobola okubeera ez'obulabe eri abalwadde baffe.
- ➔ Kolela wamu n'ebibiina byabannakyewa nebirwanirira eddembe ly'abantu mu kitundu.
- ➔ Weeyunge ku bukiiko obugatta ebitongole ebwenjawulo okusobola okugonjoolera awamu ebizibu by'omukitundu kyammwe.
- ➔ Kozesa eby'okulabirako ebyenkukunala ebisobola okuyanmba okusikiriza enkyukakyuka okubeerawo.
- ➔ Beera kitundu ku mugano gw'abantu omunene okusobola okuteekawo embeera ennungi mu by'obulamu.

THE CLEAR TOOLKIT

EKIWANDIIKO EKY'OGUGOBERERA

Okutendeka abasawo mungeri gye'bayinza okuyamba abalwadde okulwanyisa embeera embi zebabelamu ezabulijo nga zikosa obulamu bwabwe

Ekigendererwa kya Clear Toolkit eno, kwe kutumbula obusobozi bw'abasawo mu ngeri gyebakwatamu ebintu ebikosa obulamu bwabantu.

Omuntu bwoba ojjanjaba abalwadde mu kitundu, oja kuzuula ebintu bingi ebikosa obulamu entakera mu bantu abenjawulo kko emirundi egy'omuddiringana. Mu masooka, kiki ky'osobola okukola okwewala ebintu binno mukifo kyokulwooleza mu kujjanjaba?

Ebintu ebikosa obulamu bwaffe bitera okuva ku mbeera zaffe zetubeeramu eza bulijjo, n'ebitwetooolode awaka, n'ebintu nga obwavu, enjala, okwawula omukubalala kubalala, okulinyirira eddembe ly'obuntu wamu n'obusosoze

Bwetukozesa emitendera gino ena ejiri mu kiwandiko kino, kijja kutuyamba okutegeera ekireeta ebintu ebikosa obulamu byetujanjaba bulikaseera. Ffena, nze naawe tusobola okukolera awamu okuleetawo enjawulo mu by'obulamu mu kitundu kyaffe nga tuyita mu kubuuzza n'okubaako ebinti byetukola eri ebintu ebyo ebireeta embeera embi ey'obulamu.

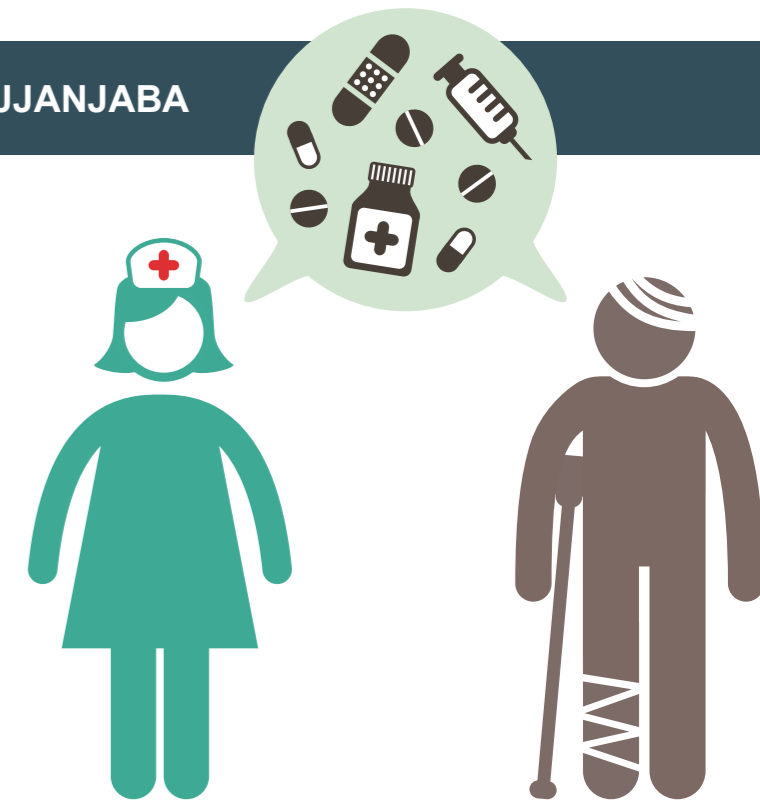
- 1 **JJANJABA**
 - 2 **BUUZA**
 - 3 **OKUWEEREZA**
 - 4 **OKWOGERERA**
- 



OMUTENDERA OGUSOKA : JJANJABA

Yadde nga omulimu gwo omukulu kujjanjaba balwadde, teli kintu kikulobera kubaako by'obabuza nga bwobajanjaba. Kino, wamu ne bookola nabo, kijja kukuyamba mu kugezako okutegeera lwaki embeera ezimu zeeyongera okweyoleka mu balwadde era naki kyetuyinza okukola okuzitangira kko n'okuzikendeeza. Nga omusawo bw'oba nga obuuzizza ebibuuzo omulwadde, kyangu okumulagirira eri abantu obo wayinza okujja obuyambi naddala mu kitundu mwabeera.

Osobola okulwoozza nti ebintu ebimu ebireeta endwadde bitiisa era nga kizibu okubijjawa, naye toline kubimala kululwo wekka. Bw'onookozesa Toolkit eno, oja kuyamba abalwade bo okutukurira abantu abalala ab'omugaso mu kitundu kyo nga ggwe abasobola okuyamba oba okugaba obuyambi obwenjawulo.



JJUKIRA BINO:

- Ssaayo omwoyo era owulirize
- Wa ekitiibwa n'okwessa mu bigere by'abalala
- Beera n'ekisa era n'okutegeera abalala
- Zimba obwesigwa n'embeera entebenkevu
- Beera n'endowooza ennene erowooza ku bintu eby'enjawulo
- Beera mwangu okutuukurirwa n'okwogereganya naawe
- Beera nga otegeera obuwangwa bw'abantu
- Beera mukakkamu namugumiikiriza eri ebyo by'onoowulira



OMUTENDERA OGWOKUBIIRI: BUUZA

Okubuuzza ebibuuzo mu ngeri entuufu kijja kukuyamba okuzuula ebintu ebiri emabega w'ebyo ebikosa obulamu olwo olyoke osobole okulagirira abalwadde okugenda mu bifo ebituufu eby'okufuniramu obuyambi. Jjukira nti abalwadde bangi ebizibu byabwe no bweraliikirivu bibayitirirako nebatamanya nawakufunira buyambi oba ne webatandikira okubusanga.

Bw'oba ng'obuuzza ebibuuzo, bibuuzze mu ngeri essaamu ekitiibwa era nga y'amukwano, kikusobozese okufuna okuddibwamu okutangaavu era okw'omugaso. Kakasa anti obuuliza ebibuuzo mu kifo omulwadde mw'asobola okwogera n'emirembe awatali kutya.

EBIMU KUBIBUZO BYOYINZA OKUBUZA

Abantu b'omu nnyumba yo balina emirimu gy'enkalakkalira gyebakola ate nga bakolera mu mbera ennungi mu by'obulamu?

Ani alabirira abaana bo ng'abantu b'omunnyumba yo bagenze okukola?

Abaana b'emyyaka gy'okusoma basobola okugenda ku ssomero buli lunaku?

Awaka wabeerawo eby'okulya ebimala ebbanga lyonna?

Ggwe n'abomumaka go mulina aw'okusula awalungi ate nga wayonjo?

Owulila nga ewaka wo weyagalila wo era nga owulililawo emirembe?

Olina wo obweraliikirivu bwonna kubukuumi bw'abaana bo?

Obeera ko mu mbeera oy'okunyigirizibwa, okuluusanyiziibwa oba okutiisibwatiisibwa?

Olina yo emikwano oba abenganda b'ojjako obuyambi mu biseera ebizibu?



EBYEMIRIIMU



OKULABIRIRA ABAANA



EBYENSOOMA



ENDIISA



EBYENSUULA



OBUTABANGUKO MUMAKA



OKUVUMAGANYA ABAANA



OKUSOSOLEBWA



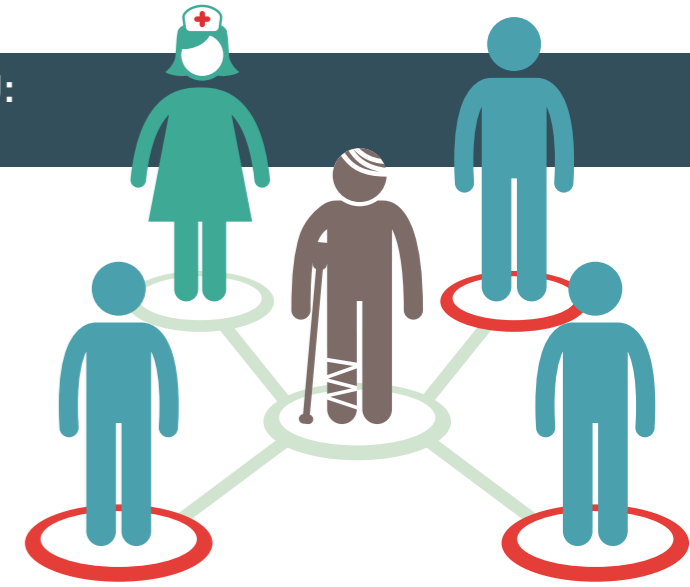
OKWAWULAMU



OMUTENDERA OGWOKUSAATU: OKUWEREZA

Nga omaze okuwa obalwadde obujanjabi obusooka, n'okubabuuzza ebibuuzo ebikwata ku mbera yabwe, oja kuba ofunye kw'osinzirira okutegeera obulungi ebizibu byabwe.

Ebizibu ebimu biyinja okulabika nga tebitasoboka kugonjolwa, naye manya nti toli weka mukugezaako obigonjoola. Oli mu kifo ekituufu mw'osobolera okuweereza abalwadde bano mu bifo mwebasobola okufuna obuyambi mu kitundu kyo, oba n'okukozesa ebibiina by'obwegassi abamu ku bbo byebayinza okuba nga tebamanyi so ng'ate bisobola okubayamba kko n'okutumbula eby'obulamu byabwe.



EBIMU KUBIFO BYOYINZA OKUWEEREZAMU ABANTU:



Ebitongole ebikola kubye mirimu, ekifo webabangulira abantu mu by'emirimu, Pulogramu zebyemikono.



Ebitongole ebikola kunsonga z'abaana, ebikola kukula kw'abaana okulungi, ebirabirira abaana emisana.



Obukiiko bw'amasomero, Ekitongole kye gwanga ekikola ku by'okusoma, Ebitongole ebikola kuddembe ly'abaana.



Amaterekero g'emmere, webagabira emere ey'obwerere, ennimiro za bulungi bwansi.



Ebibiina ebyogerera eddembe ly'okuba n'aw'okusuzibwa, ekitongole ekikwataganya eby'okupangisa.



Ebifo abakyala webawaaba emisango, ebibiina by'akyala, layini z'amasimu agokubako mu bwangu singa wabawo okuvumirira eddembe ly'abakyala.



Ebifo ebizibu abavubuka, ebitongole ebikuma dembe nga poliisi, woofiisi y'omukungu wa poliisi mu kitundu.



Ebitongole ebikola ku by'amateeka, Ebitongole ebikola ku ddembe ly'abantu, ebibiina by'obuwanga.



Ebibiina ebizibu, Ebitongole by'eddiini, n'enkwatagana y'ebibiina n'abantu.