

Institutional collaboration and mechanisms for ensuring sustainability of a NWIS

Dr. Lystra Fletcher Paul (FAO)

Outline

- Key questions

- What is sustainability?
- Who are the key actors/institutions?
- What worked and what did not work?
- What are the main requirements for sustainability?



What is sustainability?

- The ability to be maintained at a particular level without causing damage to or depletion of the resource.

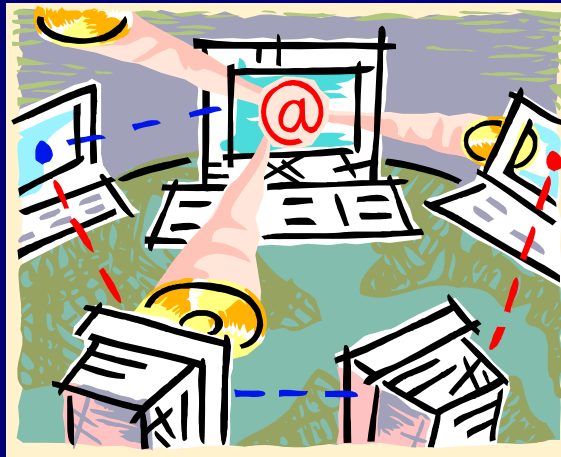
Oxford English Reference Dictionary

Sustainability of the NWRIS

- Sustainability deals with updating the system with the relevant data on an on-going basis to ensure that the needs of the users are met in a timely manner.



Who are the Key Actors?



- Data Manager/Administrator
- Data Contributors
- Users



Why NWIS didn't work?

- Governance
 - Bureaucracy, funding, changes
- Institutional
 - budget, staffing
- Technical
 - instruments, coverage, trained staff

What worked

- Clearly articulated Institutional Mandates and relationships among agencies (supported by policies /legislation)
- Relevant Strategies and Work Plans
- Inter-agency system of permits, checks and counterbalances



What worked?

- On going investment in development and updates
- Human resource capacity building
- Legislative and institutional readjustments



Institutional collaboration

- NWIS Steering Committee
- Clearly defined roles, relationships and responsibilities
- Must be part of their normal work

Mechanisms for Sustainability

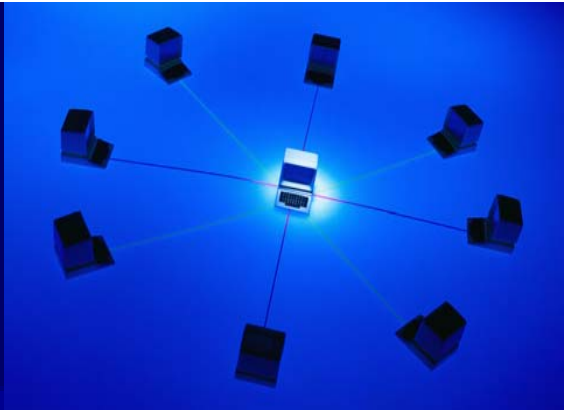
- Legislative and institutional framework
- Communication and feedback
- Quality assurance systems
- On-going investment in development and updates
- Public awareness and capacity building

Data Administrator

- Leadership – commitment, initiative, passion, etc
- Communication
- Feedback
- Flexible
- Responsive
- Well informed



Data contributors



- Commitment
- Ownership
- Utility – what's in it for me?
- Increased Efficiency – doing what we do better
- Communication
- Integrity

Data users

- Utility – what's in it for me?
- Increased Efficiency – doing what we do better
- Dynamic
- Communication



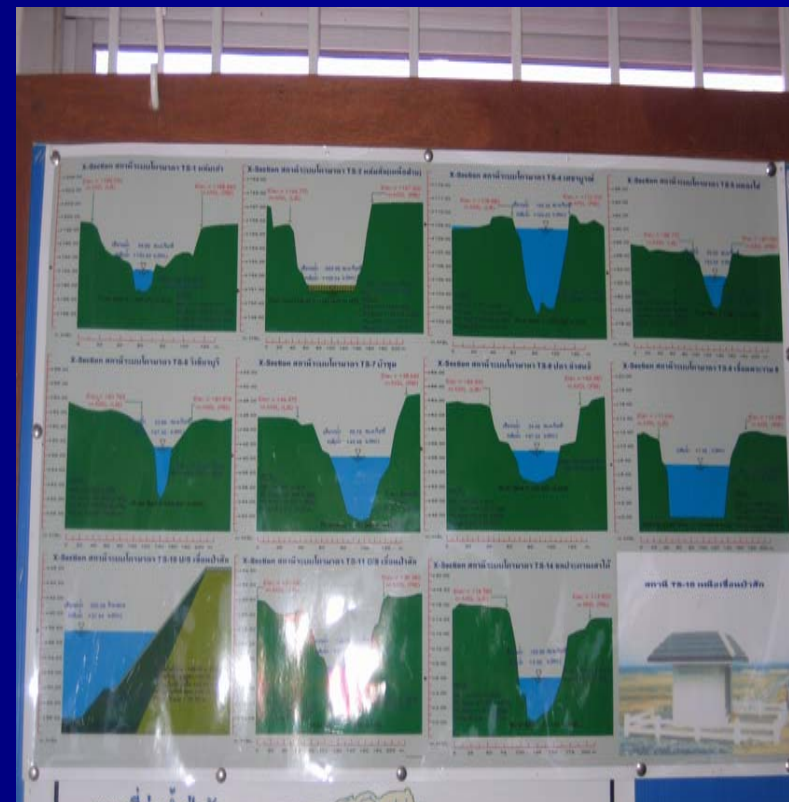
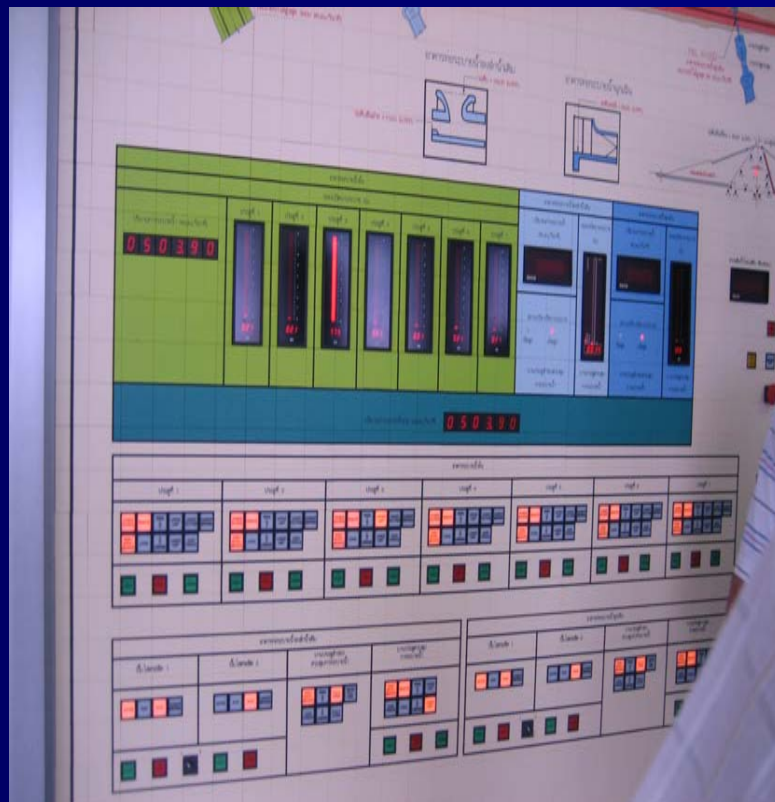
Conclusions

- For sustainability the NWIS
 - Contributors and uses who see the value of the system – making what they do easier
 - Communication, feedback and adjustments
 - On-going investment

Conclusions

- For sustainability the NWIS
 - Reliable data
 - Committed, well trained data manager
 - Clearly defined roles and responsibilities of contributing agencies

NWIS of the future?



The key to sustainability...

The NWIS must be able to assist the key actors do their normal work more efficiently, so that it is not seen as an additional responsibility or burden.



Thank you