



Experiences in Watershed Management and Stakeholder Engagement in Canada

Sandrine Desaulniers, Member of the Council,
Quebec Basin Organization Network
North American Network of Basin Organization
Manager of Du Chêne Watersheds Organization

CARIWIN Regional Seminar, Georgetown Guyana, January 2010



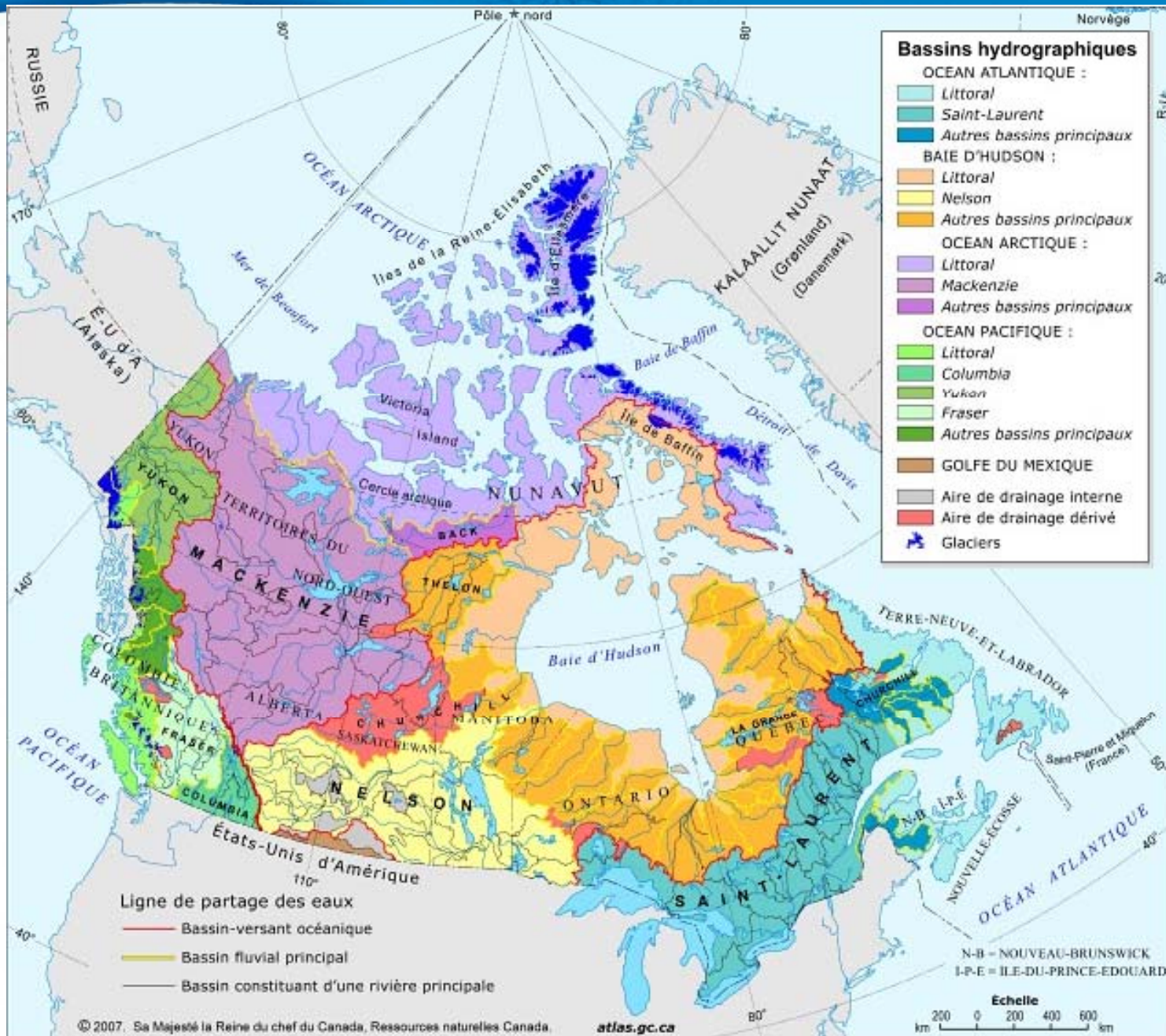


RÉGIONALISME
DES CONSERVATEURS
DE L'AMÉRIQUE VERSANT
DU QUÉBEC

ROBVQ



Canada's Main Watersheds





Water is a *common resource*

- 1. Federal:** Navigation, Fisheries and Fish habitat.
- 2. Provincial:** Preservation of water quality and natural habitats (lakes, rivers and wetlands);
Withdrawals management.
- 3. Regional:** Land management and river maintenance
- 4. Municipal:** Supply drinking water,
Waste water management and
Protection of shoreline habitats, flood plains and wetlands.



- Sectoral management;
- Administrative boundaries;
- Lack of cohesion in the actions taken upstream and downstream;
- Current issues require a global vision.



Quebec Water Policy – 2002

Integrated Watershed Resource Management (IWRM)

- Participative governance;
- Watershed Organizations



RÉGIONS
DES BASSINS VERSANTS
DU QUÉBEC

ROBVQ



2002 Quebec Water Policy: 33 Watershed Organizations





Mission:

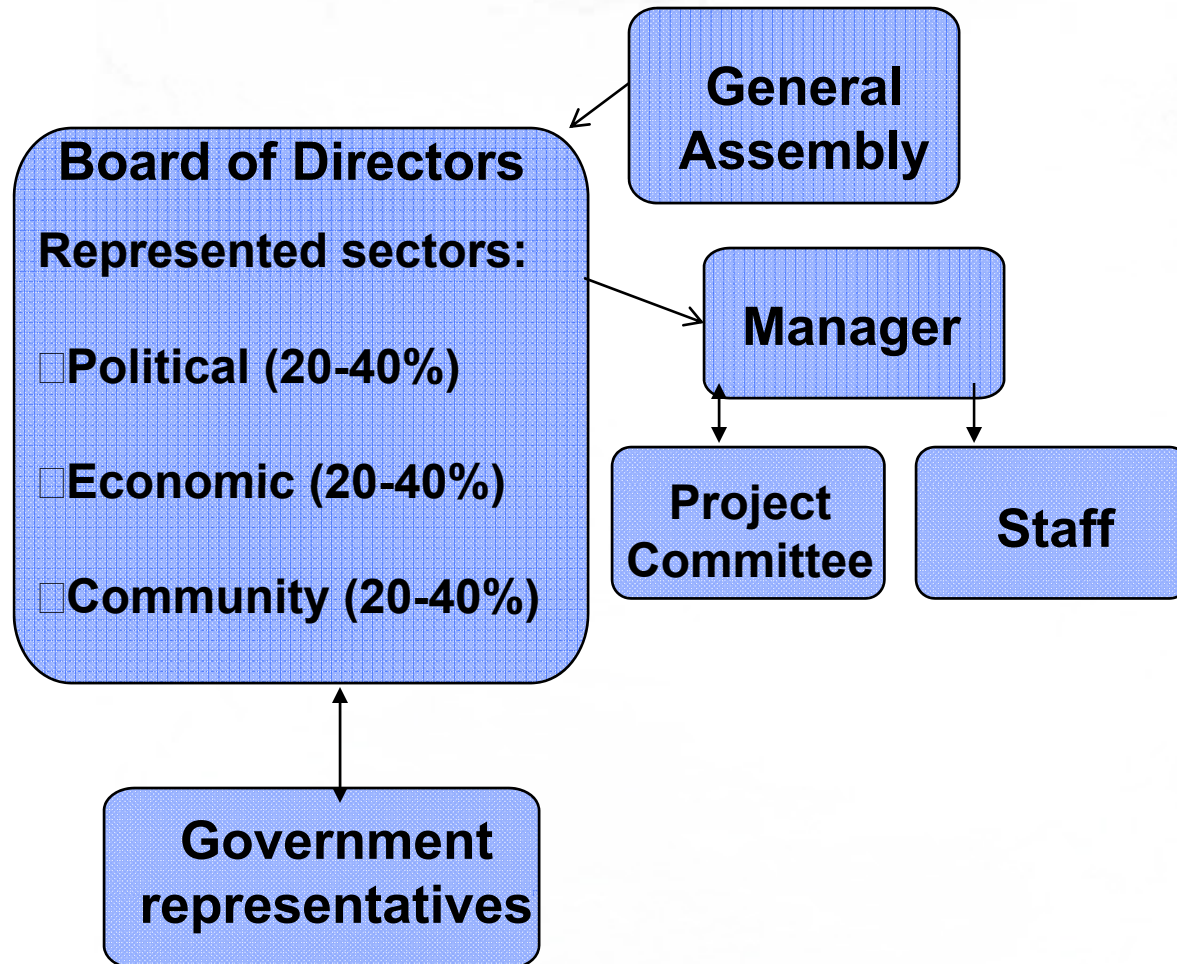
To bring together the Devil's watershed stakeholders, in a process of participatory planning and partnership for a sustainable management of the region's water resources.

Mandates:

1. To establish a **Water Master Plan** for the watershed and coordinate its implementation;
2. To facilitate **dialogue** and **partnerships** amongst the numerous stakeholders of the watershed;
3. To contribute to the **integration, development and distribution of information about the watershed's resources**;
4. To **inform and consult the public** about water management and its challenges.



Watershed Organization



√ Board of directors acts as a **round table**



Lake Kénogami and Chicoutimi and aux Sables Rivers Watershed Committee



- Created after 1996 Saguenay flood,
- by the Ministry of Environment of Quebec,
- To propose dam and flow management



REGOUVERNEMENT
DES PROVINCES
DE QUÉBEC
ROBVQ



Stakeholder engagement

Du Chêne Watersheds Organization



- Environmental regulations
- Created in 2007 by *Union of Agricultural Producers* and the regional government
- To restore the river quality



Alliance for the Devil's River Watershed



- Major housing and recreational development
- Created in 2005 by the local government
- To maintain the river quality and discharge



IWRM cycle: 7 Steps

0 – Development of a vision

1- Watershed analysis

2- Stakes and orientations

3- Objectives and indicators

4- Action plan

5- Implementation

6- Monitoring and evaluation

Water Master Plan (WMP) :

is a planning tool
at the watershed level
used to determine and
prioritize the necessary
interventions in order to
achieve stakeholder
objectives.

6 to 8 years



Watershed analysis:

Territory: geology, topography, soil types, Ecological Reference Framework, climate, hydrology, hydrography, aquatic ecosystems and species.

Activities : Land occupation, agriculture, forestry, industries, tourism/recreation, municipal infrastructures (roads, waste water plants, drinking water plants).

Environmental indicators: Surface and ground water quality, benthic communities, riparian buffer quality, soil erosion potentiel, DRASTIC.



Role of Watershed Organizations:

- **Facilitator = Create partnerships** between stakeholders **through dialogue**
- Intergrate data and create information (**GIS**)
- **Motivator**



REGROUPEMENT
DES ORGANISATIONS
DE BASSIN VERSANT
DU QUÉBEC

ROBVQ



Thank you for your attention

ROBVQ
675 BOUL. RENÉ-LEVESQUE EST
QUÉBEC (QC) G1R 5V7

TEL : 418-521-3878
1-866-281-8378
FAX : 418-644-2003

info@robvq.qc.ca

www.robvq.qc.ca