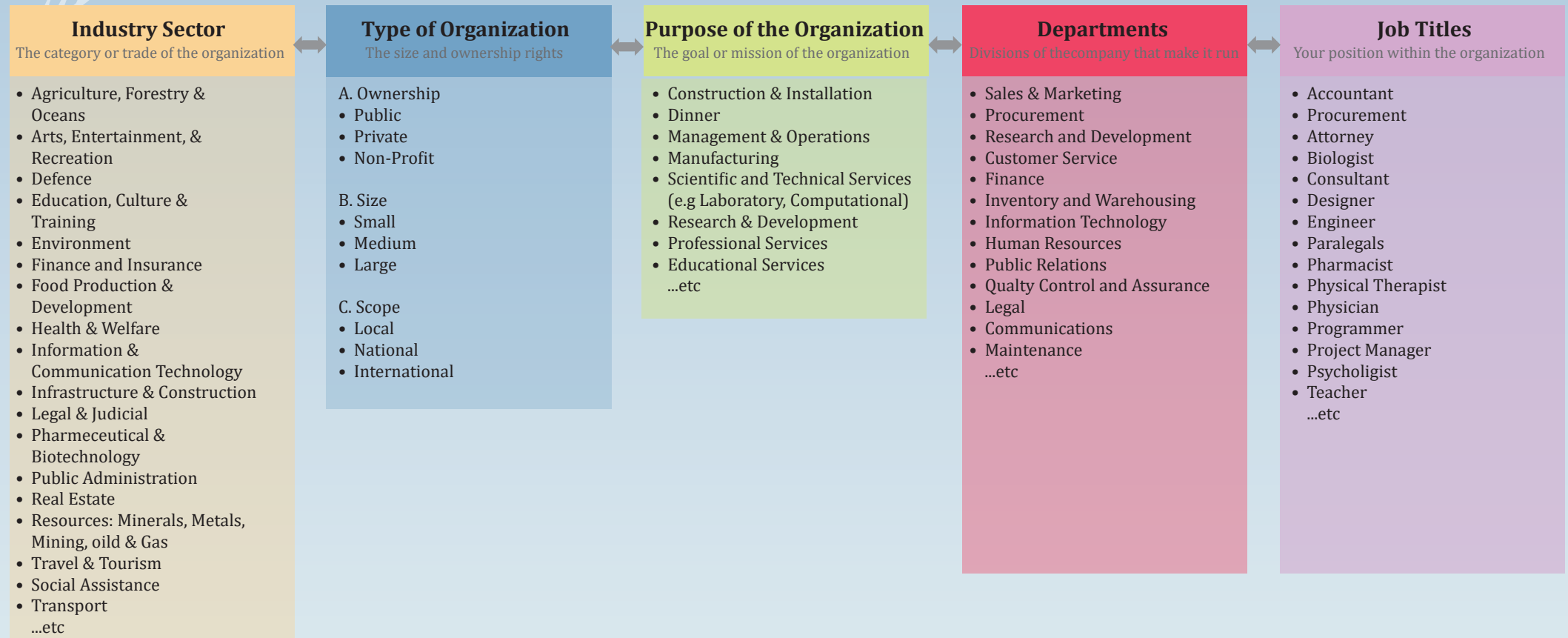


QUICK GUIDE TO THE WORLD OF WORK

Understanding the world of work, and where you fit in, is a challenge for many graduating students. Up to now, most students only know what they have been exposed to and cannot imagine, or comprehend, what else is 'out there'. The following diagram provides an overview of how the 'world of work' works. The various aspects of the world of work are classified into 5 categories.

In order to identify where in the world of work you want to be, you should select an option from each category. It does not matter which one you want to start with, nor if you cannot select one for every category, but keep in mind: the better you refine where you want to work, the easier your job search will be. Your choices will depend on your interests, values, skills and future goals



EXAMPLE OF A STUDENT'S CHOICE

