

APRIL 2025





# CONTENT

## Groupe Focus

Your dedicated team

## Administrative furniture

### Lot 1 – Individual workspace

- A.1 – Individual workspace
- A.2 – Height-adjustable individual workspace
- B.1 – Task chair model no.1
- B.2 – Task chair model no.2
- C.1 – Open space workstation
- C.2 – Height-adjustable open space workstation
- C.3 – Closed workstation with sliding door
- Ergonomic accessories

Production lead times

Warranties



# YOUR DEDICATED TEAM

A highly specialized elite team



Jason Kirk  
Vice-president, National  
corporate accounts

T: (514) 644-5578  
[jkirk@groupefocus.com](mailto:jkirk@groupefocus.com)



Valérie Mathieu  
Account Manager

T: (514) 236-7388  
[vmathieu@groupefocus.com](mailto:vmathieu@groupefocus.com)



Élodie Bourget  
Technical specialist

T: (514) 644-5550 #4158  
[ebourget@groupefocus.com](mailto:ebourget@groupefocus.com)



Nadia Tremblay  
Account Coordinator

T: (514) 644-5550 #4196

**In order to provide you with unparalleled service and experience, Groupe Focus provides you with an elite team.**

With more than 10 years of experience in corporate furniture, **Valérie Mathieu** has distinguished herself by her consultative approach towards clients. She will accompany you throughout your projects by offering you an unparalleled customer service.

She will be present at your site meetings and she will take charge of all the stages of your project in order to make it a success and a source of pride for your institution.

**Élodie Bourget** is also part of Valérie's team. She will play an important role at the technical level, in product planning and research for the entire project. She will be able to support the team in evaluating and identifying specific needs, generating installation plans, but above all, creating a precise and exhaustive list of components required for your project.

Coordination is also an essential aspect of a project. This segment will be the responsibility of **Nadia Tremblay**. Nadia will make every effort to place and monitor orders and verify them. Meeting the established deadlines is at the top of her priorities and responsibilities.

In case that a situation needs to be escalated, **Jason Kirk**, Vice-president of National corporate accounts, will be your reference in the organization.

Our commitment towards McGill University is to provide you with our best resources, to offer impeccable service and great products at all times.





# LOT 1

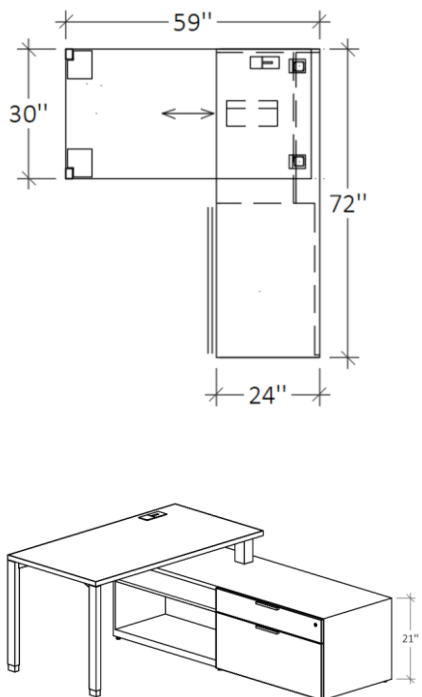
## INDIVIDUAL WORKSPACE



# LOT 1 – INDIVIDUAL WORKSPACE



## A.1 – Individual workspace



Manufacturer : **Teknion**

Collection : **Casegoods**

- HPL surface 30'' x 59'', straight edge, painted metal grommet
- Painted metal legs
- LPL credenza, 24'' x 72'' x 21'' H, b/f & open bookcase configuration
- 1'' h levelers

Variety of legs, dimensions, finishes, etc.

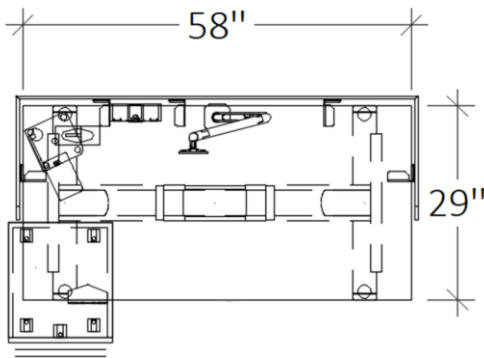
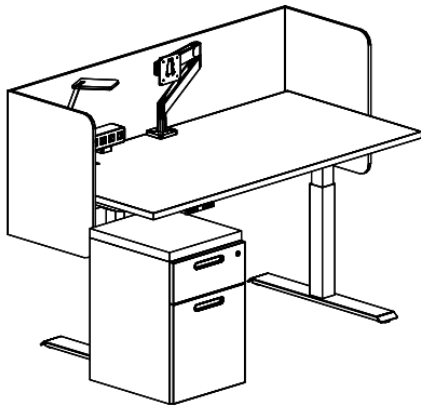
**Total price as per configuration : 1,205.00\$**



# LOT 1 – INDIVIDUAL WORKSPACE



## A.2 – Height-adjustable individual workspace



Manufacturer : **Teknion**

Collections : **Complements & Cityline**

- Hispace Slide height-adjustable table
- Adjustment range from 22.6" to 48.7"
- HPL surface 29" x 58", straight edge, painted metal grommet
- Painted metal « T » base. (3) available finishes
- Programmable switch with (3) memory settings
- Plastic wire manager under the surface & vertical wire manager
- Power bar included under the surface
- « U » shaped felt screen. Total height of 23", 13" above the surface and 10" under the surface
- LPL mobile pedestal with recessed handles, seat pad grade 1 included
- Structure of the pedestal allowing positioning above the adjustable base
- 1" h levelers

### Unit price if purchased individually

- Tangent task light : 195.00\$
- Single monitor arm : 200.00\$
- USB / power monument : 155.00\$
- Height-adjustable table : 745.00\$
- Felt screen : 325.00\$
- Mobile ped with seat pad : 550.00\$

This application is available in many dimensions.

**Total price as per configuration : 1,745.00\$**

**If purchased all together.**





# LOT 1 – INDIVIDUAL WORKSPACE



## B.1 – Task chair model no.1



*Birch frame*



Manufacturer : **Allseating**

Collection : **Eighty-Two**

- Adjustable lumbar support
- Mesh back
- Height-adjustable arms
- Nylon (5) star base
- Carpet casters
- Upholstered seat grade 1
- Pneumatic seat height-adjustment
- Tilt lock mechanism with (3) positions
- *Other adjustments available (upcharge)*
- Base & structure in black finish (standard)
- *Base & structure also available in Birch finish (upcharge)*
- Overall dimensions : 35 ½ - 40''h x 25 ¾''w x 25 ¾''d
- Seat : 15 - 19 ½''h x 20 ½'' w x 17-19''d
- Back : 20 ½ ''h x 18''w
- Weight capacity : 325 lbs

**Unit price : 245.00\$**

**Unit price (birch frame) : 275.00\$**

*\* All images are for reference only, please refer to the description for details.*



# LOT 1 – INDIVIDUAL WORKSPACE



## B.1 – Task chair model no.1 (option)



*Birch frame*



Manufacturer : **Allseating**

Collection : **L1**

- Adjustable lumbar support
- Mesh back
- Height-adjustable arms
- Nylon (5) star base
- Carpet casters
- Upholstered seat grade 1
- Pneumatic seat height-adjustment
- Synchro-tilt lock mechanism
- *Other adjustments available (upcharge)*
- Base & structure in black finish (standard)
- *Base & structure also available in Birch finish (upcharge)*
- Overall dimensions : 38 ½ - 43''h x 27 ½''w x 27 ½''d
- Seat : 15 ½'' - 20''h x 20'' w x 20''d
- Back : 22''h x 19 ½''w
- Weight capacity : 350 lbs

**Unit price : 385.00\$**

**Unit price (birch frame) : 415.00\$**

*\* All images are for reference only, please refer to the description for details.*





# LOT 1 – INDIVIDUAL WORKSPACE

## B.2 – Task chair model no.2



*Grey frame*



*White frame*



Manufacturer : **Humanscale**

Collection : **Diffrient World**

- Structure designed to adequately support and fit the user
- Intuitive adjustments
- Mesh back
- Height-adjustable arms integrated to the back and not the seat
- Nylon (5) star base
- Carpet casters
- Upholstered seat grade 1
- Base & structure in black or grey finish (standard)
- *Base & structure also available in white finish (upcharge)*
- Weight capacity : 400 lbs

**Unit price : 640.00\$**

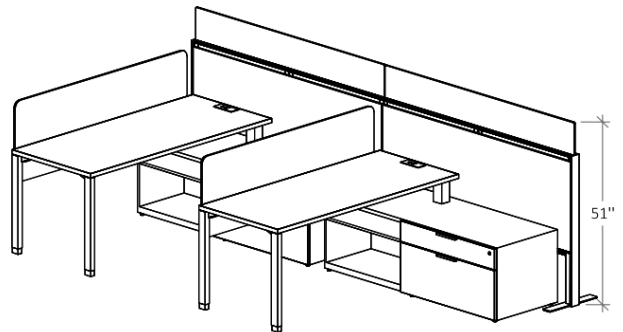
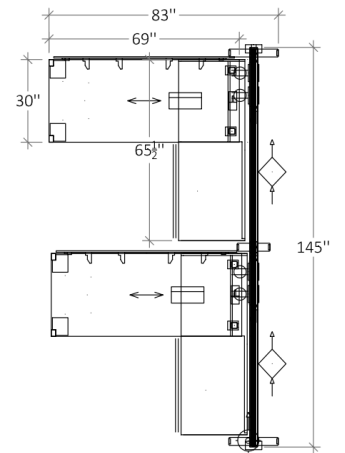
**Unit price (white frame) : 675.00\$**



# LOT 1 – INDIVIDUAL WORKSPACE



## C.1 – Open space workstation



Manufacturer : **Teknion**

Collections : **Casegoods & District**

- Freestanding electrified panels 42" H, fabric tiles grade 1
- Felt add-on screen 9" H (5 finishes available)
- Total height of 51"
- (2) duplex per user, base feed connection
- HPL surface 30" x 69", straight edge, painted metal grommet
- Painted metal legs
- LPL credenza 24" x 66" x 21" H, b/f & open bookcase configuration
- 1" h levelers

Variety of legs, dimensions, finishes, etc.

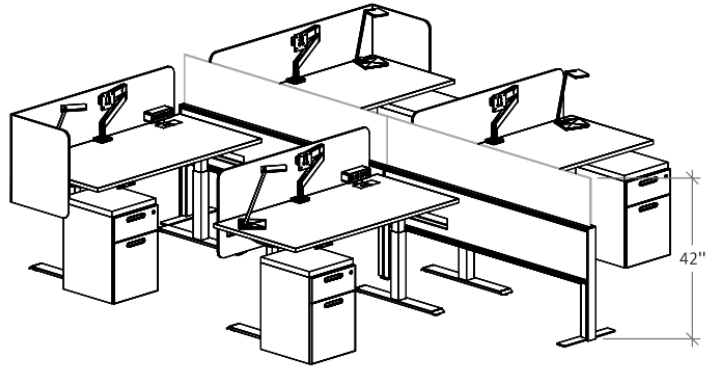
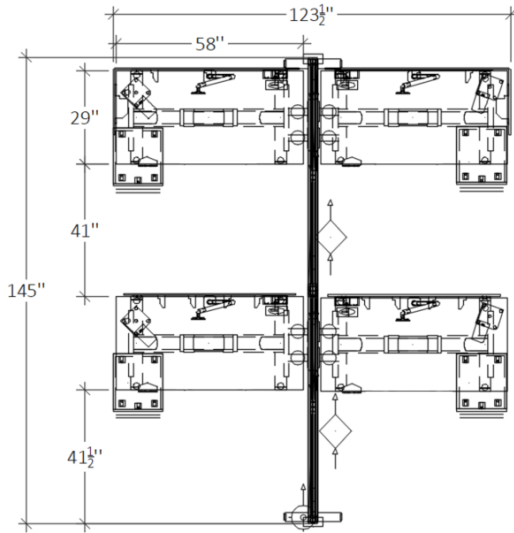
**Total price as per configuration : 4,330.00\$**



# LOT 1 – INDIVIDUAL WORKSPACE



## C.2 – Height-adjustable open space workstation



Manufacturer : **Teknion**

Collections : **District, Complements & Cityline**

- Freestanding electrified panels 29" H, fabric tiles grade 1
- Frosted glass add-on screen 13" H (2 finished available)
- Total height of 42"
- (2) duplex per user, base feed connection
- Hispace Slide height-adjustable table
- Adjustment range from 22.6" to 48.7"
- HPL surface 29" x 58", straight edge, painted metal grommet
- Painted metal « T » base. (3) available finishes
- Programmable switch with (3) memory settings
- Plastic wire manager under the surface & vertical wire manager
- Power bar included under the surface
- (2) « L » shaped felt screens. Total height of 23", 13" above the surface and 10" under the surface
- (2) straight felt screens. Total height of 23", 13" above the surface and 10" under the surface
- LPL mobile pedestal with recessed handles, seat pad grade 1 included
- Structure of the pedestal allowing positioning above the adjustable base
- 1" h levelers

This application is available in many dimensions & configurations.

**Total price as per configuration : 8,640.00\$**

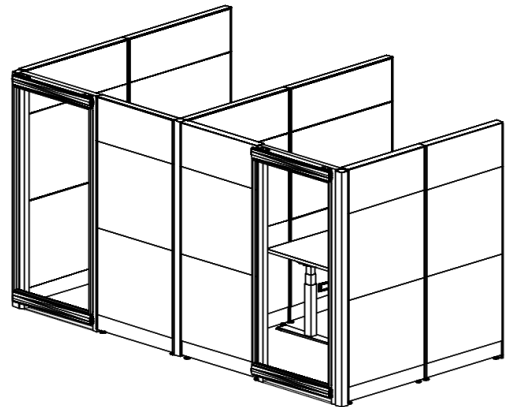
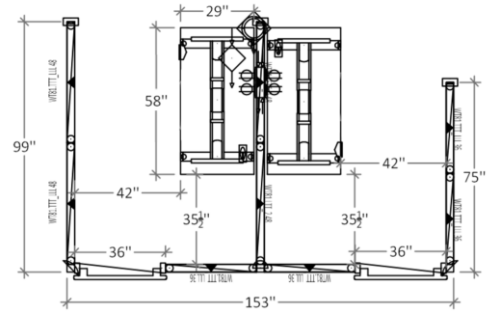




# LOT 1 – INDIVIDUAL WORKSPACE



## C.3 – Closed workstation with sliding door



Manufacturer : **Teknion**

Collection : **Leverage**

- Electrified panels 81" H
- Exterior tiles & under the surface in laminate, the rest of the tiles are upholstered in fabric grade 1
- Translucent sliding door without lock. *Door thresholds in each office opening.*
- (2) duplex per user, base feed connection
- Hispace Slide height-adjustable table
- Adjustment range from 22.6" to 48.7"
- HPL surface 29" x 58", straight edge, painted metal grommet
- Painted metal « T » base. (3) available finishes
- Programmable switch with (3) memory settings
- Plastic wire manager under the surface & vertical wire manager
- Power bar included under the surface
- 1" h levelers

This application is available in many dimensions & configurations.

**Total price as per configuration : 7,645.00\$**



# LOT 1 – INDIVIDUAL WORKSPACE

## Ergonomic accessories



Manufacturer : **Teknion**  
Collection : **Tangent**

- LED personal lamp
- Dimming of 100%, 50% and off
- Color temperature of 3500K
- 360 degrees stem swivel includes one USB-A port
- 180 degrees stem tilt
- 50 000 hour life span
- White finish

Unit price : 195.00\$

Manufacturer : **Humanscale**  
Collection : **M2**

- Single monitor arm
- Dynamic adjustment
- Fits a monitor weighing 15.5 lbs
- Edge clamp
- Wire management
- (3) available finishes

Unit price : 200.00\$

Manufacturer : **Humanscale**  
Collection : **Neathub**

- Power module including (2) power outlet, (1) USB-A port & (1) USB-C port
- Edge clamp
- (2) available finishes
- Dimensions : 5.6''w x 4.2''d x 3.6'' h

Unit price : 155.00\$



# PRODUCTION / LEAD TIMES & WARRANTIES

The order is accepted and processed as soon as Groupe Focus receives a purchase order in accordance with the latest quotation or items in the electronic catalogue or official order as the case may be.

PRODUCTS	LEAD TIMES
Teknion	4 to 6 weeks <sup>1</sup>
Allseating	4 to 6 weeks <sup>1</sup>
Humanscale	4 to 6 weeks <sup>1</sup>

<sup>1</sup> *Delivery times presented in this document are subject to changes without notice.  
\*\*\* The item with the longest lead time determines the delivery of the entire order.*

## WARRANTIES

WARRANTIES	DURATION
Teknion	Limited lifetime warranty
Allseating	12 years
Humanscale	3 years (Neathub) 15 years (monitor arms)





THERE ARE SPACES THAT WE WALK  
THROUGH AND THOSE WHERE  
WE WANT TO STAY.

AND THEN THERE'S THE ONES WHO SET  
YOU APART  
AND CHANGE YOUR WORLD.

