



McGILL UNIVERSITY

April 2023

INFORMAL AND COLLABORATIVE FURNITURE CATALOGUE



Facilities Management and
Ancillary Services | Design
Services

TABLE OF CONTENTS

1-	INTRODUCTION	p. 3
2-	Lot 1: Lounge high traffic _ Burovision	p.4
3-	Lot 2: Lounge _ Groupe Focus	p.8
4-	Lot 3: Various table _ Groupe Focus	p.22
5-	Lot 4: Personal hub _ Groupe Focus	p.33
6-	Lot 5: Phone booth _ Burovision	p.41
7-	Lot 6 : Freestanding screens _ Groupe Focus	p.44

This catalogue lists all informal and collaborative furniture products available through McGill's preferred suppliers and should be used for all purchases of this type of furniture.

Informal and collaborative furniture can be installed in a **variety of areas, including open spaces, classrooms, libraries, teaching spaces, hallways and offices.**

The products are listed by supplier. Refer first to the table of contents to identify the product you are looking for. You will then find the contact information to place an order and delivery times in the corresponding supplier's section.

For more information or questions, please contact :

Design Services : infodesignservices@mcgill.ca

Introduction

Lot 1: Lounge High traffic

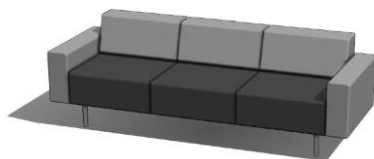
Burovision



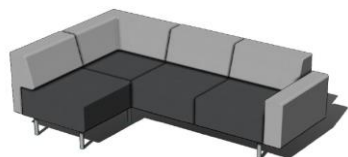
Lot 1. LOUNGE LIEU TRÈS FRÉQUENTÉ



> Référence Item A



> Référence Item B



> Référence Item C

DESCRIPTION

Exchange est un système modulaire de sièges souples composé d'un ensemble concis d'éléments qui peuvent être personnalisés dans des configurations littéralement infinies avec des blocs de 2'x2' pour la modularité et le meilleur confort de sa catégorie - 2 725 pour être exact.

Un outil polyvalent pour les architectes d'intérieur et les spécificateurs : Exchange est le plus grand en termes de portée et de profondeur. Ses pieds ininterrompus de 109 pouces offrent une esthétique visuelle continue à l'espace de travail.

Fonctionnel, efficace, durable et flexible :

Exchange peut répondre aux besoins variés des lieux de travail, des établissements d'enseignement supérieur et des établissements de santé d'aujourd'hui.

<https://www.allseating.com/series/exchange>

*** AUTRES CONFIGURATIONS DISPONIBLES SUR DEMANDE**

MODELE A

DESCRIPTION:

Modèle 2 places sans bras avec dossier, bloc-console central avec module d'alimentation
Assise en vinyle grade 2 & dossier en tissu grade 1, table centrale en laminé avec prise électrique

Dimensions: 72" large x 28" profond x 30" haut, Hauteur Assise: 18"

PRIX: \$ 1 642.00

MODELE B

DESCRIPTION:

Modèle 3 places avec bras et dossier, bras étroits et bas.
Assise en vinyle grade 2 & dossier en tissu grade 1

Dimensions: 84" large x 28" profond x 30" haut, Hauteur Assise: 18" (Largeur bras 6" inclus au total)

PRIX: \$ 2 436.00

MODELE C

DESCRIPTION:

Modèle 4 places en L (2x3) avec bras droit et siège sans bras
Assise en vinyle grade 2 & dossier en tissu grade 1

Dimensions: 78"x48" large x 28" profond x 30" haut, Hauteur Assise: 18" (Largeur bras 6" inclus au total)

PRIX: \$ 3 085.00

OPTIONS ADDITIONNELS :

Bras bas et larges en tissu (grade 1)
12" de large, 24" du sol



Low Wide

EXTRA:
Modèle A +\$85.00 par bras
Modèle B +\$60.00 par bras
Modèle C +\$60.00 par bras

Bras bas et étroits en tissu (grade 1)
6" de large, 24" du sol



Low Narrow

EXTRA:
Modèle A +\$70.00 par bras

Ajouter module électrique / USB



EXTRA: \$110.00 par bras

Finis de tissus disponibles:

<https://www.allseating.com/fabrics/small>

Finis de structure disponibles:

<https://www.allseating.com/frames-finishes>

Plus d'informations:

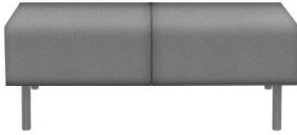
<https://www.allseating.com/sites/default/files/assets/resources/218exchangeellsheetjune2018v3.pdf>



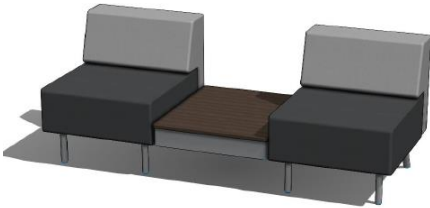
Lot 1. LOUNGE LIEU TRÈS FRÉQUENTÉ



> Référence Item D



> Référence Item E



> Référence Item F

DESCRIPTION

Exchange est un système modulaire de sièges souples composé d'un ensemble concis d'éléments qui peuvent être personnalisés dans des configurations littéralement infinies avec des blocs de 2'x2' pour la modularité et le meilleur confort de sa catégorie - 2 725 pour être exact.

Un outil polyvalent pour les architectes d'intérieur et les spécificateurs : Exchange est le plus grand en termes de portée et de profondeur. Ses pieds ininterrompus de 109 pouces offrent une esthétique visuelle continue à l'espace de travail.

Fonctionnel, efficace, durable et flexible :

Exchange peut répondre aux besoins variés des lieux de travail, des établissements d'enseignement supérieur et des établissements de santé d'aujourd'hui.

<https://www.allseating.com/series/exchange>

*** AUTRES CONFIGURATIONS DISPONIBLES SUR DEMANDE**

MODELE D

DESCRIPTION:

Ottoman 18"H x 24"W x 24"D.

Assise en tissu grade 1

Dimensions: 24" large x 24" profond x 18" haut, Hauteur Assise: 18"

PRIX: \$ 417.00

MODELE E

DESCRIPTION:

Ottoman 18"H x 48"W x 20"D

Assise en tissu grade 1

Dimensions: 48" large x 20" profond x 18" haut, Hauteur Assise: 18"

PRIX: \$ 816.00

MODELE F

DESCRIPTION:

Modèle 2 places sans bras avec dossier, bloc-console central sans prise électrique

Assise en vinyle grade 2 & dossier en tissu grade 1, table centrale en laminé

Dimensions: 72" large x 28" profond x 30" haut, Hauteur Assise: 18"

PRIX: \$ 2 118.00

OPTIONS ADDITIONNELS :

Bras bas et larges en tissu (grade 1)
12" de large, 24" du sol



Low Wide

EXTRA:
Modèle F +\$85.00 par bras

Bras bas et étroits en tissu (grade 1)
6" de large, 24" du sol



Low Narrow

EXTRA:
Modèle F +\$70.00 par bras

Finis de tissus disponibles:

<https://www.allseating.com/fabrics/small>

Finis de structure disponibles:

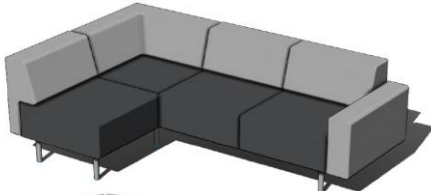
<https://www.allseating.com/frames-finishes>

Plus d'informations:

<https://www.allseating.com/sites/default/files/assets/resources/218exchangesellsheetjune2018v3.pdf>



Lot 1. LOUNGE LIEU TRÈS FRÉQUENTÉ



> Référence Item G



> Référence Item H

DESCRIPTION

Exchange est un système modulaire de sièges souples composé d'un ensemble concis d'éléments qui peuvent être personnalisés dans des configurations littéralement infinies avec des blocs de 2'x2' pour la modularité et le meilleur confort de sa catégorie - 2 725 pour être exact.

Un outil polyvalent pour les architectes d'intérieur et les spécificateurs : Exchange est le plus grand en termes de portée et de profondeur. Ses pieds ininterrompus de 109 pouces offrent une esthétique visuelle continue à l'espace de travail.

Fonctionnel, efficace, durable et flexible :

Exchange peut répondre aux besoins variés des lieux de travail, des établissements d'enseignement supérieur et des établissements de santé d'aujourd'hui.

<https://www.allseating.com/series/exchange>

*** AUTRES CONFIGURATIONS DISPONIBLES SUR DEMANDE**

MODELE G

DESCRIPTION:

Banquettes pour 4 personnes : sièges avec dossier moyen, table collaborative
Assise en vinyle grade 2 & dossier en tissu grade 1

Dimensions: 78" x 48" large x 24" profond x 30" haut, Hauteur Assise: 18" (Largeur bras 6" inclus au total)

PRIX: \$ 3 085.00

MODELE H

DESCRIPTION:

Banquettes pour 4 personnes : sièges avec dossier haut, table collaborative
Assise en vinyle grade 2 & dossier en tissu grade 1

Dimensions: 96" x 48" large x 24" profond x 48" haut, Hauteur Assise: 18"

PRIX: \$ 3 978.00

OPTIONS ADDITIONNELS :

Bras bas et larges en tissu (grade 1)
12" de large, 24" du sol



Low Wide

EXTRA:
Modele G +\$60.00 par bras
Modele H +\$60.00 par bras

Bras bas et étroits en tissu (grade 1)
6" de large, 24" du sol



Low Narrow

EXTRA:
Modele G +\$70.00 par bras
Modele H +\$70.00 par bras

Ajouter module électrique/ USB



EXTRA: \$110.00 par bras

Finis de tissus disponibles:

<https://www.allseating.com/fabrics/small>

Finis de structure disponibles:

<https://www.allseating.com/frames-finishes>

Plus d'informations:

<https://www.allseating.com/sites/default/files/assets/resources/218exchangesellsheetjune2018v3.pdf>

Lot 2: Lounge

Groupe Focus



2023



McGill – Standards Catalog

Informal and collaborative furniture





CONTENTS

Groupe Focus

Your dedicated team

Lounge

Lot 2 - Lounge

- 2-seater lounge chair
- 3-seater sofa
- L-shaped 4-seater sofa
- Ottoman 24"
- Ottoman 42"
- 2 person bench
- 4 person bench with medium back
- 4 person bench with high back

Lot 3 – Various tables

- Model A: Coffee table
- Model B.1: Table 36x72
- Model B.2: Table 42x96
- Model C.1: High table 20x60
- Model C.2: High table 36x72
- Model D: Personal table

Lot 4 – Individual hub

- Hub for 1 person
- Hub for 4 persons

Lot 6 – Freestanding screen

- Freestanding screen

Production / Lead times & warranties



YOUR DEDICATED TEAM

A highly specialized elite team



Philippe Leroux
Director, Sales and
corporate development

T: (514) 644-5550 #4313
pleroux@groupefocus.com



Valérie Mathieu
Account Manager

T: (514) 644-5550 #4108
vmathieu@groupefocus.com



Nadia Tremblay
Account Coordinator

T: (514) 644-5550 #4196

In order to provide you with unparalleled service and experience, Groupe Focus provides you with an elite team.

With more than 10 years of experience in corporate furniture, **Valérie Mathieu** has distinguished herself by her consultative approach towards clients. She will accompany you throughout your projects by offering you an unparalleled customer service.

She will be present at your site meetings and she will take charge of all the stages of your project in order to make it a success and a source of pride for your institution.

Coordination is also an essential aspect of a project. This segment will be the responsibility of **Nadia Tremblay**. Nadia will make every effort to place and monitor orders and verify them. Meeting the established deadlines is at the top of her priorities and responsibilities.

In case that a situation needs to be escalated, **Philippe Leroux**, Director of Sales and Corporate Development, will be your reference in the organization.

Our commitment towards McGill University is to provide you with our best resources, to offer impeccable service and great products at all times.





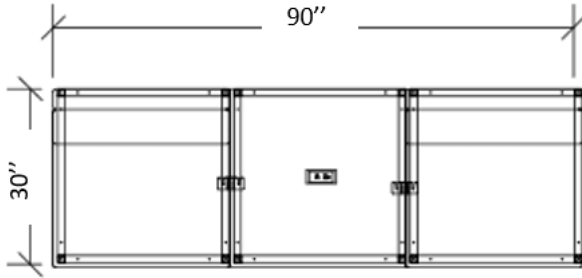
LOT 2 – LOUNGE



LOT 2 – LOUNGE

L1 – 2-seater lounge chair

2-seater lounge chair without arms and center table



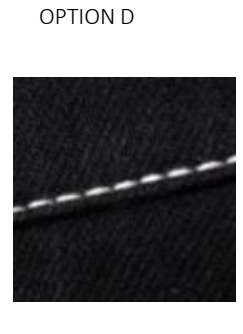
OPTION A



OPTION B



OPTION C



OPTION D

*This Application is available in many dimensions.



Manufacturer: **Groupe Lacasse** Collection: **Cube 300**

LOT 2 - LOUNGE

DESCRIPTION	Qty	Total price
-------------	-----	-------------

2-seater lounge chair without arms and center table

(2) 1-seater lounge chair with low back, no arms

Dimensions : 90''W x 30''D x 31''H

Back: Fabric Grade 1 (exceeds 100 000 double rubs)

Seat: Fabric Grade 1 / Vinyl (exceeds 250 000 double rubs)

Laminate table with power module (2 electrical outlets & 2 USB)

Metal straight legs (black or silver)

Triple base frame. Also available with 3 individual bases for modular purpose

1 2 828.00 \$

Option A: Power module placed on the front side of the seat

Option B: One side arm or two side arms

Option C: Retractable shelf (only available with arm option)

Option D: Contrast stitching (black or white)

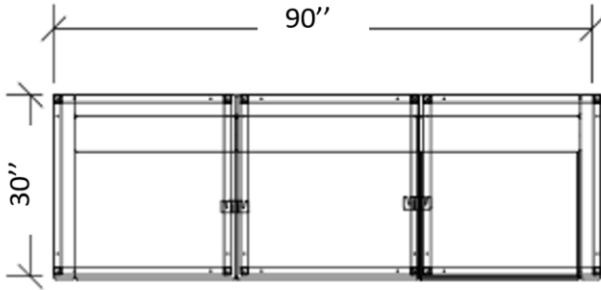
* All images are for reference only, please refer to the description for details.



LOT 2 – LOUNGE

L2 – 3-seater sofa

3-seater sofa with end arms



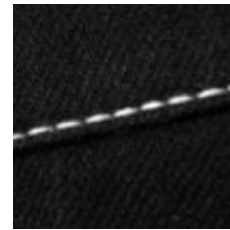
OPTION A



OPTION B



OPTION C



*This Application is available in many dimensions.



Manufacturer: **Groupe Lacasse** Collection: **Cube 300**

LOT 2 - LOUNGE

DESCRIPTION	Qty	Total price
3-seater sofa with end arms 3-seater sofa with low back and 2 end arms Dimensions : 90''W x 30''D x 31''H Back: Fabric Grade 1 (exceeds 100 000 double rubs) Seat: Fabric Grade 1 / Vinyl (exceeds 250 000 double rubs) Metal straight legs, black or silver Triple base frame. Also available with 3 individual bases for modular purpose	1	3 024.00 \$

Option A: Power module placed on the front side of the seat

Option B: Retractable shelf (only available with arm option)

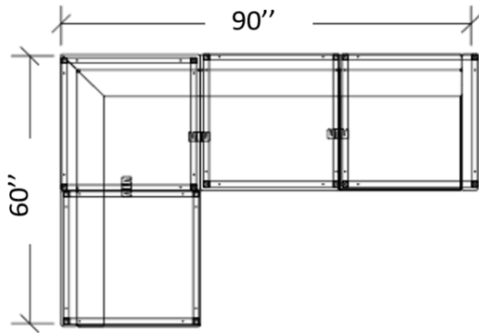
Option C: Contrast stitching (black or white)



LOT 2 – LOUNGE

L3 – L-shaped 4-seater sofa

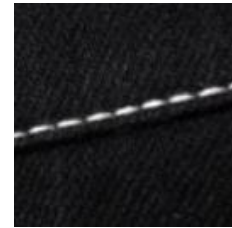
L-shaped 4-seater sofa with end arm



OPTION A



OPTION B



OPTION C

*This Application is available in many dimensions.



Manufacturer: **Groupe Lacasse** Collection: **Cube 300**

LOT 2 - LOUNGE

DESCRIPTION	Qty	Total price
<p>L-Shaped 4 seater sofa with end arms</p> <p>L-shaped 4-seater sofa with low back and one end arm Dimensions : 90''W x 60''D x 31''H Back: Fabric Grade 1 (exceeds 100 000 double rubs) Seat: Fabric Grade 1 / Vinyl (exceeds 250 000 double rubs) Metal straight legs, black or silver Single and triple base frame. Also available with 4 individual bases for modular purpose</p>	1	4 085.00 \$

Option A: Power module placed on the front side of the seat

Option B: Retractable shelf (only available with arm option)

Option C: Contrast stitching (black or white)

* All images are for reference only, please refer to the description for details.



LOT 2 – LOUNGE

01 – Ottoman 24''



OPTION A



OPTION B



OPTION C



OPTION D



*This Application is available in many dimensions.



Manufacturer: **Rouillard** Collection: **Geo**

LOT 2 - LOUNGE

DESCRIPTION	Qty	Total price
Ottoman 24"D		
Round ottoman on glides Dimensions : 24'' dia x 18''H Fabric Grade A (exceeds 100 000 double rubs)	1	445,00 \$

Option A: On casters

Option B: 2 fabric colors

Option C: Square ottoman 18''D x 18''W

Option D: With handle



LOT 2 – LOUNGE

O2 – Ottoman 42''



OPTION A



OPTION B



OPTION C



*This Application is available in many dimensions.



Manufacturer: **Rouillard** Collection: **Geo**

LOT 2 - LOUNGE

DESCRIPTION	Qty	Total price
Ottoman 42"D		
Round ottoman on glides		
Dimensions : 42" dia x 18"H	1	805,00 \$
Fabric Grade A (exceeds 100 000 double rubs)		

Option A: On casters

Option B: 2 fabric colors

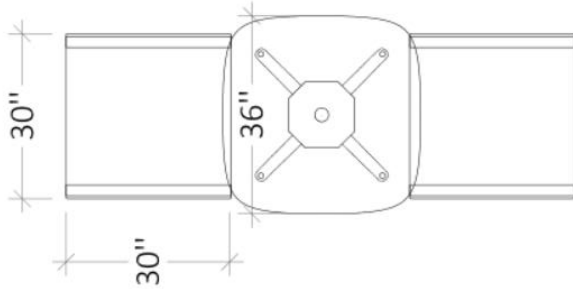
Option C: With handle



LOT 2 – LOUNGE

L4 – 2 person bench

2 person bench without back and work table



OPTION A

OPTION B

OPTION C

OPTION D



*This Application is available in many dimensions.



Manufacturer: **Groupe Lacasse & Teknion** Collection: **Hip Hop & Zones**

LOT 2 - LOUNGE

DESCRIPTION	Qty	Total price
-------------	-----	-------------

2 person bench without back and work table

Laminate square work table 36''W x 29''H
Metal star base

(2) Bench 1 person without back Dimensions : 30''W x 30''D x 18''H Seat : Fabric Grade 1 / Vinyl (exceeds 250 000 double rubs) Metal loop legs	1	1 886.00 \$
---	---	-------------

Option A_Table: Round table 36'' dia

Option B_Bench: Metal blade legs

Option C_Bench: Wood legs

Option D_Bench: Power module placed on the front side of the seat

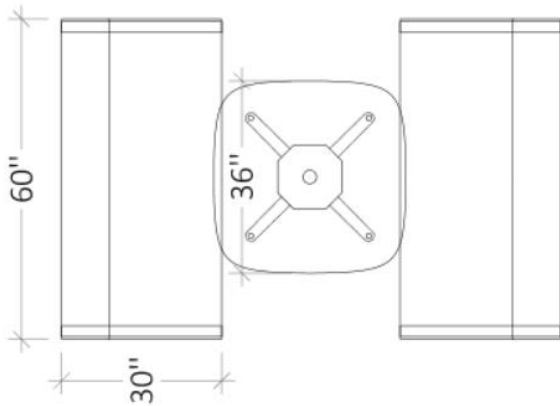
* All images are for reference only, please refer to the description for details.



LOT 2 – LOUNGE

L5 – 4 person bench with medium back

4 person bench with medium back and work table



OPTION A



OPTION B



OPTION C



OPTION D



*This Application is available in many dimensions.



Manufacturer: **Groupe Lacasse & Teknion** Collection: **Hip Hop & Zones**

LOT 2 - LOUNGE

DESCRIPTION	Qty	Total price
<p>4 person bench with medium back and work table</p> <p>Laminate square work table 36''W x 29''H</p> <p>Metal star base</p> <p>(2) Bench 2 person with medium back</p> <p>Dimensions : 60''W x 30''D x 31 ¾''H</p> <p>Back: Fabric Grade 1 (exceeds 100 000 double rubs)</p> <p>Seat: Fabric Grade 1 / Vinyl (exceeds 250 000 double rubs)</p> <p>Metal loop legs</p> <p>Option A_Table: Round table 36'' dia</p> <p>Option B_Bench: Metal blade legs</p> <p>Option C_Bench: Wood legs</p> <p>Option D_Bench: Power module placed on the front side of the seat</p>	1	2 976.00 \$

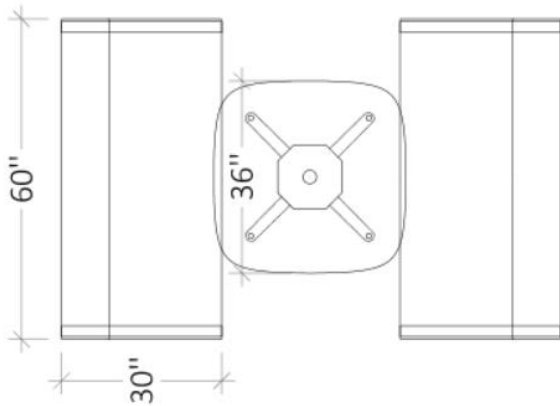
* All images are for reference only, please refer to the description for details.



LOT 2 – LOUNGE

L6 – 4 person bench with high back

4 person bench with high back and work table



*This Application is available in many dimensions.



Manufacturer: **Groupe Lacasse & Teknion** Collection: **Hip Hop & Zones**

LOT 2 - LOUNGE

DESCRIPTION	Qty	Total price
4 person bench with medium back and work table		
Laminate square work table 36''W x 29''H Metal star base		
(2) Bench 2 person with high back Dimensions : 60''W x 30''D x 49 ''H Back: Fabric Grade 1 (exceeds 100 000 double rubs) Seat: Fabric Grade 1 / Vinyl (exceeds 250 000 double rubs) Metal loop legs	1	3 668.00 \$

Option A_Table: Round table 36'' dia

Option B_Bench: Metal blade legs

Option C_Bench: Wood legs

Option D_Bench: Power module placed on the front side of the seat

Option E: With 42''H shelf behind back

* All images are for reference only, please refer to the description for details.



PRODUCTION / LEAD TIMES & WARRANTIES

The order is accepted and processed as soon as Groupe Focus receives a purchase order in accordance with the latest quotation or items in the electronic catalogue or official order as the case may be.

PRODUCTS	LEAD TIMES
Teknion tables ² (Expansion Caseloads & Training, Zones, Routes, Thesis)	5 to 6 weeks ¹
Groupe Lacasse	5 to 6 weeks ¹
Rouillard	10 to 12 weeks ¹

¹ *Delivery times presented in this document are subject to changes without notice.
*** The item with the longest lead time determines the delivery of the entire order.*

² *Wood elements on request, specific deadlines to be determined.*

Xpress program <i>Fast delivery program available for specific components, limited quantities and colors</i>	3 weeks ¹
---	----------------------

** All lead times start when the order is processed. Lead times may vary due to reasons out of our control.*

WARRANTIES

WARRANTIES	DURATION
Teknion	Limited lifetime warranty
Rouillard	10 years
Groupe Lacasse	Between 2 to 25 years



Lot 3: Various tables

Groupe Focus



2023



McGill – Standards Catalog

Informal and collaborative furniture





CONTENTS

Groupe Focus

Your dedicated team

Lounge

Lot 2 - Lounge

- 2-seater lounge chair
- 3-seater sofa
- L-shaped 4-seater sofa
- Ottoman 24"
- Ottoman 42"
- 2 person bench
- 4 person bench with medium back
- 4 person bench with high back

Lot 3 – Various tables

- Model A: Coffee table
- Model B.1: Table 36x72
- Model B.2: Table 42x96
- Model C.1: High table 20x60
- Model C.2: High table 36x72
- Model D: Personal table

Lot 4 – Individual hub

- Hub for 1 person
- Hub for 4 persons

Lot 6 – Freestanding screen

- Freestanding screen

Production / Lead times & warranties



YOUR DEDICATED TEAM

A highly specialized elite team



Philippe Leroux
Director, Sales and
corporate development

T: (514) 644-5550 #4313
pleroux@groupefocus.com



Valérie Mathieu
Account Manager

T: (514) 644-5550 #4108
vmathieu@groupefocus.com



Nadia Tremblay
Account Coordinator

T: (514) 644-5550 #4196

In order to provide you with unparalleled service and experience, Groupe Focus provides you with an elite team.

With more than 10 years of experience in corporate furniture, **Valérie Mathieu** has distinguished herself by her consultative approach towards clients. She will accompany you throughout your projects by offering you an unparalleled customer service.

She will be present at your site meetings and she will take charge of all the stages of your project in order to make it a success and a source of pride for your institution.

Coordination is also an essential aspect of a project. This segment will be the responsibility of **Nadia Tremblay**. Nadia will make every effort to place and monitor orders and verify them. Meeting the established deadlines is at the top of her priorities and responsibilities.

In case that a situation needs to be escalated, **Philippe Leroux**, Director of Sales and Corporate Development, will be your reference in the organization.

Our commitment towards McGill University is to provide you with our best resources, to offer impeccable service and great products at all times.



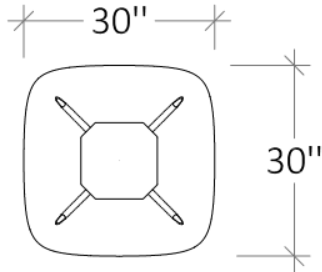


LOT 3 – VARIOUS TABLES



LOT 3 – VARIOUS TABLES

T1 – Model A: Coffee table



OPTIONS A.1 & A.2
Teknion tables (Routes)

OPTION B
Teknion tables (Casual)

OPTION C
Teknion tables (Zones)



*This Application is available in many dimensions.



Manufacturer: **Teknion** Collection: **Zones**

LOT 3 - VARIOUS TABLES

DESCRIPTION	Qty	Total price
-------------	-----	-------------

Model A: Coffee table

Laminate square work table 30" dia x 19"H
Metal star base
Also available with round top 30" dia x 19"H

1 267,00 \$

Option A.1: Round table with tubular legs, 32" dia x 14"H

Option A.2: Round table with tubular legs, 24" dia x 18"H

Option B: Round table with flat disk base, 30" dia x 20"H

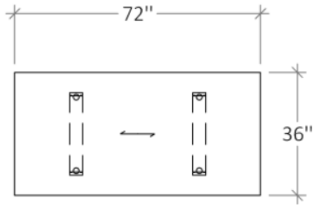
Option C: Square or round table with star base, 42"W x 16"H



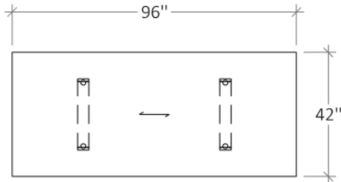
LOT 3 – VARIOUS TABLES

T2 – Model B.1: Table 36x72

T3 – Model B.2: Table 42x96



OPTION A



OPTION B



OPTION C

OPTION D



*This Application is available in many dimensions.



Manufacturer: **Teknion** Collection: **Casegoods**

LOT 3 - VARIOUS TABLES

DESCRIPTION	Qty	Total price
Model B.1 and B.2		
Rectangular table Laminate surface with straight edge (2) Laminate legs Dimensions available from 42" to 60" deep and 72" to 216" wide		
Model B.1: Table 36x72 : Dimensions: 72"W x 36"D x 29"H	1	743,00 \$
Model B.2: Table 42x96 : Dimensions: 96"W x 42"D x 29"H	1	792,00 \$

Option A: With power module (4 electrical outlets, 4 USB and 2 media). Other types of module available

Option B: Metal blade legs. Dimensions available from 42" to 60" deep and 72" to 168" wide.

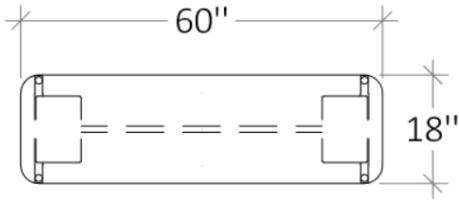
Option C: Metal blade T-legs. Dimensions available from 30" deep and 60" to 96" wide.

Option D: Metal workshop legs. Dimensions available from 42" to 60" deep and 72" to 216" wide.

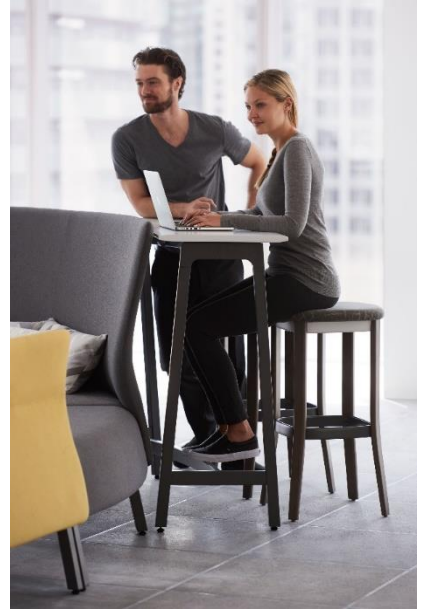


LOT 3 – VARIOUS TABLES

T4 – Model C.1: High table 20x60



Also available with curved surface and structure



*This Application is available in many dimensions.



Manufacturer: **Teknion** Collection: **Zones ledge**

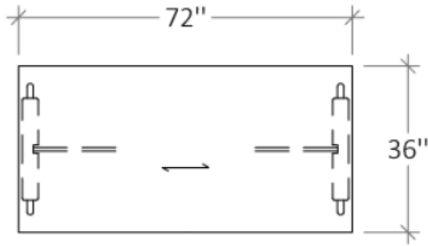
LOT 3 - VARIOUS TABLES

DESCRIPTION	Qty	Total price
Model C.1 High table, laminate surface with straight edge Metal base with footrest Includes 2 hooks under the surface Dimensions: 60"W x 18"D x 42"H Other dimensions available: 48"wide and 72" wide	1	629,00 \$



LOT 3 – VARIOUS TABLES

T5 – Model C.2: High table 36x72



OPTIONS A & C



OPTION B



OPTION D



*This Application is available in many dimensions.



Manufacturer: **Teknion** Collection: **Thesis**

LOT 3 - VARIOUS TABLES

DESCRIPTION	Qty	Total price
-------------	-----	-------------

Model C.2

Collaboration high table, laminate surface with straight edge
 Dimensions: 72''W x 36''D x 36''H
 Metal base on levelers
 Dimensions available from 24'' to 36''deep and 60'' to 84''wide

1 955,00 \$

Option A: Table 42''H

Option B: With power module

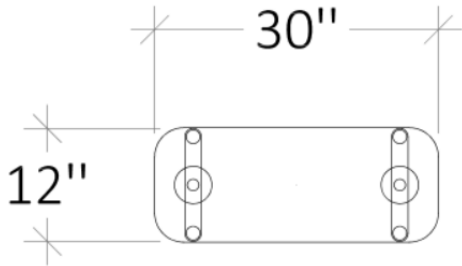
Option C: Chrome finish for the base

Option D: With laminate gables legs and modesty panel.



LOT 3 – VARIOUS TABLES

T6 – Model D: Personal table



*This Application is available in many dimensions.



Manufacturer: **Teknion** Collection: **Routes**

LOT 3 - VARIOUS TABLES

DESCRIPTION	Qty	Total price
Model D Portative work table Dimensions: 30''W x 12''D x 26''H Laminate surface Metal tubular legs	1	186,00 \$



PRODUCTION / LEAD TIMES & WARRANTIES

The order is accepted and processed as soon as Groupe Focus receives a purchase order in accordance with the latest quotation or items in the electronic catalogue or official order as the case may be.

PRODUCTS	LEAD TIMES
Teknion tables ² (Expansion Caseloads & Training, Zones, Routes, Thesis)	5 to 6 weeks ¹
Groupe Lacasse	5 to 6 weeks ¹
Rouillard	10 to 12 weeks ¹

¹ *Delivery times presented in this document are subject to changes without notice.
*** The item with the longest lead time determines the delivery of the entire order.*

² *Wood elements on request, specific deadlines to be determined.*

Xpress program <i>Fast delivery program available for specific components, limited quantities and colors</i>	3 weeks ¹
---	----------------------

** All lead times start when the order is processed. Lead times may vary due to reasons out of our control.*

WARRANTIES

WARRANTIES	DURATION
Teknion	Limited lifetime warranty
Rouillard	10 years
Groupe Lacasse	Between 2 to 25 years



Lot 4: Personnel hub

Groupe Focus



2023



McGill – Standards Catalog

Informal and collaborative furniture





CONTENTS

Groupe Focus

Your dedicated team

Lounge

Lot 2 - Lounge

- 2-seater lounge chair
- 3-seater sofa
- L-shaped 4-seater sofa
- Ottoman 24"
- Ottoman 42"
- 2 person bench
- 4 person bench with medium back
- 4 person bench with high back

Lot 3 – Various tables

- Model A: Coffee table
- Model B.1: Table 36x72
- Model B.2: Table 42x96
- Model C.1: High table 20x60
- Model C.2: High table 36x72
- Model D: Personal table

Lot 4 – Individual hub

- Hub for 1 person
- Hub for 4 persons

Lot 6 – Freestanding screen

- Freestanding screen

Production / Lead times & warranties



YOUR DEDICATED TEAM

A highly specialized elite team



Philippe Leroux
Director, Sales and
corporate development

T: (514) 644-5550 #4313
pleroux@groupefocus.com



Valérie Mathieu
Account Manager

T: (514) 644-5550 #4108
vmathieu@groupefocus.com



Nadia Tremblay
Account Coordinator

T: (514) 644-5550 #4196

In order to provide you with unparalleled service and experience, Groupe Focus provides you with an elite team.

With more than 10 years of experience in corporate furniture, **Valérie Mathieu** has distinguished herself by her consultative approach towards clients. She will accompany you throughout your projects by offering you an unparalleled customer service.

She will be present at your site meetings and she will take charge of all the stages of your project in order to make it a success and a source of pride for your institution.

Coordination is also an essential aspect of a project. This segment will be the responsibility of **Nadia Tremblay**. Nadia will make every effort to place and monitor orders and verify them. Meeting the established deadlines is at the top of her priorities and responsibilities.

In case that a situation needs to be escalated, **Philippe Leroux**, Director of Sales and Corporate Development, will be your reference in the organization.

Our commitment towards McGill University is to provide you with our best resources, to offer impeccable service and great products at all times.

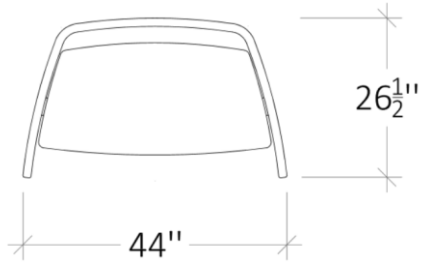


LOT 4 – INDIVIDUAL HUB



LOT 4 – INDIVIDUAL HUB

H1 – Hub for 1 person
Hub with work table



Other configuration available

OPTION A



OPTION B



OPTION C



*This Application is available in many dimensions.



Manufacturer: **Rouillard** Collection: **Wisp**

LOT 4 - INDIVIDUAL HUB

DESCRIPTION	Qty	Total price
Hub for 1 person with work table Laminate work table, 38''W x 18''D x 29''H Fabric screens 54''H, Grade A (exceeds 100 000 double rubs) Metal star base Power module (1 electrical outlet & 2 USB), installed under the surface Cable management under surface Overall dimensions: 44''W x 26.5''D x 54''H	1	1 816.00 \$

Option A: 2 fabric colors

Option B: hook

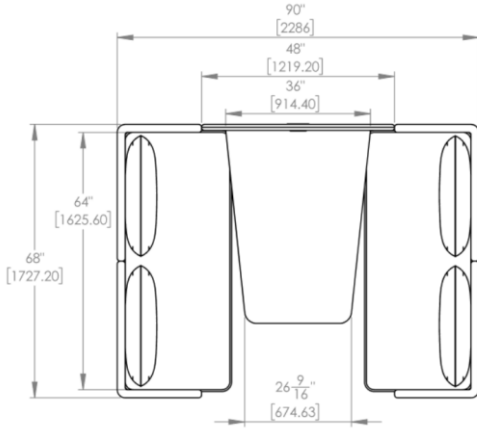
Option C: Power module (1 electrical outlet & 2 USB), installed on the surface

* All images are for reference only, please refer to the description for details.



LOT 4 – INDIVIDUAL HUB

H2 – Hub for 4 persons
Hub with 2 sofas and work table



OPTION A



OPTION B



OPTION C



*This Application is available in many dimensions.



Manufacturer: **Rouillard** Collection: **Coast**

LOT 4 - INDIVIDUAL HUB

DESCRIPTION	Qty	Total price
Hub for 4 persons with 2 sofas and work table		
Laminate work table, metal monoleg, 48"W x 26-36"D x 26"H		
Sofas 64"W and screens 54"H		
Fabric Grade A (exceeds 100 000 double rubs)		
Overall dimensions: 90"W x 68"D x 54"H		
	1	8 878.00 \$

Option A: hook

Option B: Sofas with wood legs

Option C: Power module (1 electrical outlet & 2 USB)



PRODUCTION / LEAD TIMES & WARRANTIES

The order is accepted and processed as soon as Groupe Focus receives a purchase order in accordance with the latest quotation or items in the electronic catalogue or official order as the case may be.

PRODUCTS	LEAD TIMES
Teknion tables ² (Expansion Caseloads & Training, Zones, Routes, Thesis)	5 to 6 weeks ¹
Groupe Lacasse	5 to 6 weeks ¹
Rouillard	10 to 12 weeks ¹

¹ *Delivery times presented in this document are subject to changes without notice.
*** The item with the longest lead time determines the delivery of the entire order.*

² *Wood elements on request, specific deadlines to be determined.*

Xpress program <i>Fast delivery program available for specific components, limited quantities and colors</i>	3 weeks ¹
---	----------------------

** All lead times start when the order is processed. Lead times may vary due to reasons out of our control.*

WARRANTIES

WARRANTIES	DURATION
Teknion	Limited lifetime warranty
Rouillard	10 years
Groupe Lacasse	Between 2 to 25 years



Lot 5: Phone booth

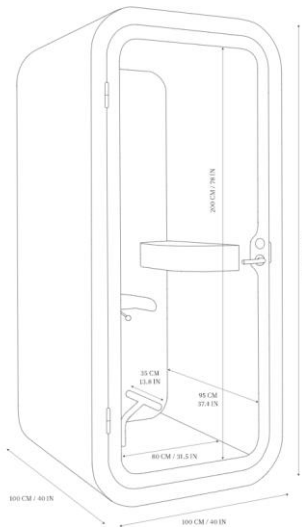
Burovision



Cabine acoustique FRAMERY – O | Standard Package



Framery O est idéale pour les appels importants ou les visioconférences. Discutez en privé sans déranger vos collègues. La cabine téléphonique offre une qualité d'insonorisation de première classe et une acoustique intérieure sans écho, résultant en un espace de travail individuel tout confort.



DESCRIPTION

- Couleur extérieure : Blanc Lustré
- Couleur intérieure : Gris
- Couleur de la moquette : Gris
- Tablette : blan
- Siège réglable en hauteur avec repose-pieds
- Couleur du siège : Gris
- Système électrique : Amérique du Nord
- 1x crochet pour manteau
- Movability kit (roulettes)

Dimension: 40" X 40"

PRIX: \$ 11 285 *
Délai de livraison: 12-15 semaines
Livraison Locale et installation : \$550

***Tarif sujet à changement selon le manufacturier. 30 jours de préavis

OPTIONS ADDITIONNELS :

- Anchrage sismique : Les ancrages doivent être spécifiés par un ingénieur en structure en fonction des conditions du site.
- Couleur optionnelles murs extérieurs | Cadre | Tissu

PRIX: \$505 | \$717 | \$134

Couleurs

Exterieur

--	--	--	--	--	--	--	--	--

Cadre

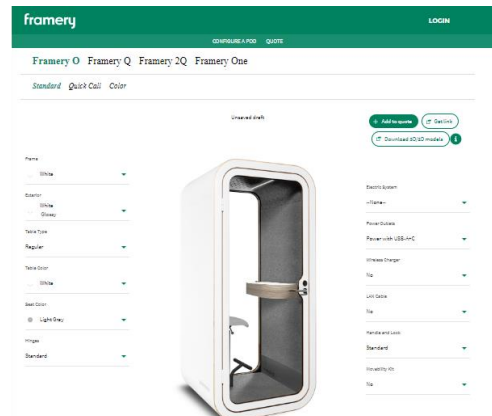
--	--

Table

--	--

Tissu du siège

--	--	--	--	--	--	--	--	--	--





Cabine acoustique FRAMERY – Q MEETING MAGGIE

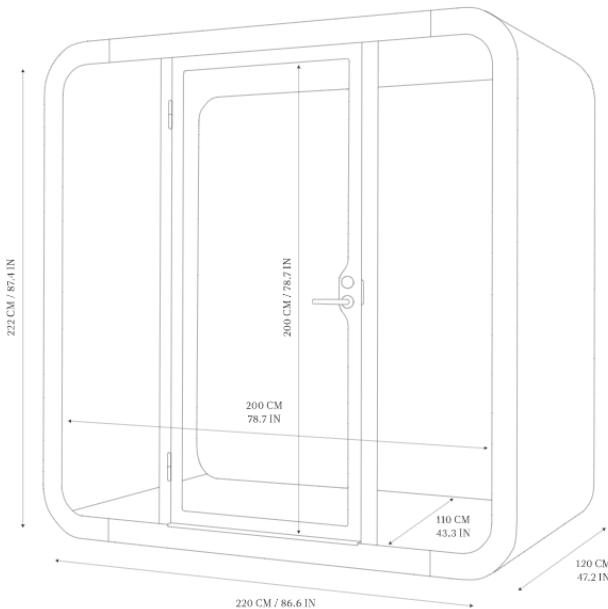


FRAMERY Q –MEETING MAGGIE

L'agencement intérieur de notre Meeting Maggie est idéal pour les réunions, les sessions de « brainstorming » et plus encore. Confortables, les deux sofas Maggie sont systématiquement inclus et vous pouvez choisir un dossier avec ou sans accoudoir.

DESCRIPTION

- Frame: White
- Exterior: White Glossy
- Electric System: North America
- Power Outlets: 2 x Power + USB-A+C
- Door: Left
- Handle and Lock: Standard
- Table: Turnable table
- Backrest: Straight backrest
- Seat Color: Maggie Gray
- 2 coat hooks



PRIX: \$24 004*
Délai de livraison: 12-15 semaines
Livraison Locale et installation : \$1050

***Tarif sujet à changement selon le manufacturier.
30 jours de préavis

OPTIONS ADDITIONNELS :

- Anchrage sismique **PRIX: \$652**
- Movability Kit (roulettes) **PRIX: \$652**
- Couleur murs extérieurs | Cadre | Tissu **PRIX: \$652 | \$983 | \$485**

Colors

Exterior



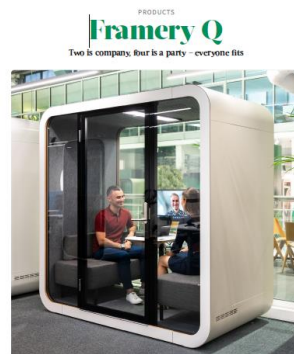
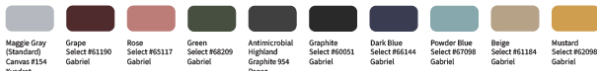
Frame



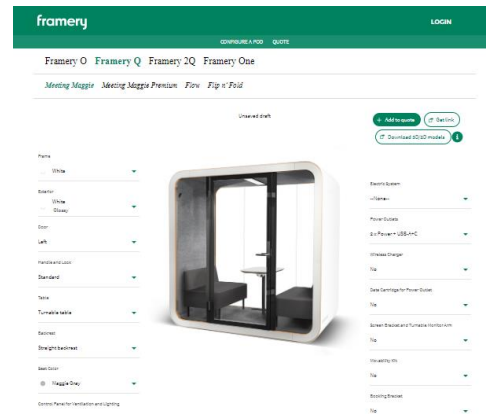
Table



Maggie Sofa upholstery



Framery Q office pod is a multifunctional, soundproof space for 1-4 people. This pod is ideal for meeting, brainstorming sessions, and important one-on-one conversations in private without cluttering the office or the office distracting you. The pod's award-winning design saves a minimum amount of footprint, fitting seamlessly into your office.



Lot 6: Freestanding screens

Groupe Focus



2023



McGill – Standards Catalog

Informal and collaborative furniture





CONTENTS

Groupe Focus

Your dedicated team

Lounge

Lot 2 - Lounge

- 2-seater lounge chair
- 3-seater sofa
- L-shaped 4-seater sofa
- Ottoman 24"
- Ottoman 42"
- 2 person bench
- 4 person bench with medium back
- 4 person bench with high back

Lot 3 – Various tables

- Model A: Coffee table
- Model B.1: Table 36x72
- Model B.2: Table 42x96
- Model C.1: High table 20x60
- Model C.2: High table 36x72
- Model D: Personal table

Lot 4 – Individual hub

- Hub for 1 person
- Hub for 4 persons

Lot 6 – Freestanding screen

- Freestanding screen

Production / Lead times & warranties



YOUR DEDICATED TEAM

A highly specialized elite team



Philippe Leroux
Director, Sales and
corporate development

T: (514) 644-5550 #4313
pleroux@groupefocus.com



Valérie Mathieu
Account Manager

T: (514) 644-5550 #4108
vmathieu@groupefocus.com



Nadia Tremblay
Account Coordinator

T: (514) 644-5550 #4196

In order to provide you with unparalleled service and experience, Groupe Focus provides you with an elite team.

With more than 10 years of experience in corporate furniture, **Valérie Mathieu** has distinguished herself by her consultative approach towards clients. She will accompany you throughout your projects by offering you an unparalleled customer service.

She will be present at your site meetings and she will take charge of all the stages of your project in order to make it a success and a source of pride for your institution.

Coordination is also an essential aspect of a project. This segment will be the responsibility of **Nadia Tremblay**. Nadia will make every effort to place and monitor orders and verify them. Meeting the established deadlines is at the top of her priorities and responsibilities.

In case that a situation needs to be escalated, **Philippe Leroux**, Director of Sales and Corporate Development, will be your reference in the organization.

Our commitment towards McGill University is to provide you with our best resources, to offer impeccable service and great products at all times.





LOT 6 – FREESTANDING SCREEN



LOT 6 – FREESTANDING SCREEN

S1 – Freestanding screen



*This Application is available in many dimensions.



Manufacturer: **Teknion** Collection: **Transit (Ability)**

LOT 6 - FREESTANDING SCREEN

DESCRIPTION	Qty	Total price
Freestanding Mobile Screen Dimensions : 36''W x 51''H Front side: Whiteboard with pencil tray included Back side: Fabric Grade 1 (exceeds 100 000 double rubs)	1	599,00 \$

Option A: Fabric Grade 1 on both sides

Option B: Whiteboard on both sides



PRODUCTION / LEAD TIMES & WARRANTIES

The order is accepted and processed as soon as Groupe Focus receives a purchase order in accordance with the latest quotation or items in the electronic catalogue or official order as the case may be.

PRODUCTS	LEAD TIMES
Teknion tables ² (Expansion Caseloads & Training, Zones, Routes, Thesis)	5 to 6 weeks ¹
Groupe Lacasse	5 to 6 weeks ¹
Rouillard	10 to 12 weeks ¹

¹ *Delivery times presented in this document are subject to changes without notice.
*** The item with the longest lead time determines the delivery of the entire order.*

² *Wood elements on request, specific deadlines to be determined.*

Xpress program <i>Fast delivery program available for specific components, limited quantities and colors</i>	3 weeks ¹
---	----------------------

** All lead times start when the order is processed. Lead times may vary due to reasons out of our control.*

WARRANTIES

WARRANTIES	DURATION
Teknion	Limited lifetime warranty
Rouillard	10 years
Groupe Lacasse	Between 2 to 25 years

