

Memorandum

Office of the Dean
Faculty of Dentistry
2001 McGill College Avenue, Suite 500
Montreal, QC, H3A 1G1
Tel: 514-398-7222 | Fax: 514-398-

TO: Board of Governors
FROM: Dr. Anja Geitmann, Dean, Faculty of Agricultural and Environmental Sciences
SUBJECT: Overview of the Faculty of Agricultural and Environmental Sciences
DATE: October 6, 2022
DOCUMENT #: GD22-19

ACTION REQUIRED: INFORMATION APPROVAL/DECISION

ISSUE & EXPECTED OUTCOME An overview of activities, initiatives and developments of the Faculty of Agricultural and Environmental Sciences is provided to the Board of Governors for information.

BACKGROUND & RATIONALE Presentations feature regularly on-Board agendas in order to keep Board members apprised of the University's academic and campus activities.

The following presentation has been prepared by the Office of the Dean of the Faculty of Agricultural and Environmental Sciences and provides an overview of the following elements of the Faculty:

1. Deferred Maintenance at Macdonald Campus

An external audit was conducted in 2015 of buildings on the downtown McGill campus and Macdonald campus resulting in the development of a list detailing recommended deferred maintenance (DM) repairs for each building. For Macdonald Campus, necessary renovation work totaling approximately \$90M was identified. During the first phase of the DM renovations, the following buildings were/are being renovated:

Centennial Centre: Renovation of ball room, replacement of windows, new ventilation system etc.

Raymond Building: Ventilation system, replacement of hoods, installation of sprinklers, roof repair etc. Work is executed simultaneously with installation of major CFI project (Phenotyping platform). Evacuating the entire building has been a major challenge due to research lab and special infrastructure (microscopy, growth chambers) on site and lack of swing space.

2. New Teaching Greenhouse

The existing teaching greenhouse facility of the Macdonald Campus was composed of the Raymond and the Summerby greenhouses both located on the south side of the Raymond building. Together, they occupied an area of ~ 800 square meters and offered 19 cultivation bays and three potting rooms. This facility was extensively used for teaching from mid-August to end of May and remained unutilized during the warmer months of the year due to the lack of an air-cooling system. The facility had reached the end of its useful life as some sections were original to the Raymond building (~ 100 years old).. Both greenhouses were torn down and a new greenhouse with 7 bays is currently being built on the site of the old Raymond teaching greenhouse. In addition to the necessary greenhouse infrastructure, the building will also have a small classroom for teaching and event purposes.

3. Move of the Clinical Nutrition Research Unit

The original location of the Mary Emily Clinical Nutrition Research Unit in a residential building on Maple Street had numerous limitations compromising the researchers' ability to perform 21st century research. and required extensive deferred maintenance and major renovations in building structure and systems (electrical, HVAC, roof leakage, likely asbestos in walls). To address these shortcomings, a new location for the Research Unit was identified in the former post office of Sainte-Anne-de-Bellevue, now completely renovated by a private developer. McGill leases the space and the CNRU has moved recently.

4. Community Engagement Centre (CEC)

Until the pandemic slowed down activities, the Farm at Macdonald Campus hosted approximately 6000 visitors per year. Due to an ever-increasing demand, a Community Engagement Centre will be built in order to host more visitors and further develop the campus outreach programs. The new Centre will multiply the Farm's capacity to receive visitors by providing a suitable venue for flexible use, and will offer hands-on, educational activities and programs to the public. The CEC will allow the Faculty to give visibility to agriculture, food production, food security, and environmental issues in the context of global climate change and local context. The facility will serve as home base for educational tours of the farm, host speaker series and events, special weekend events for the general public, continuing education workshops and seminars, and industry meetings, conferences and receptions, and will serve as a resource for students across McGill as well as other universities and CEGEPs.

The CEC (<https://www.mcgill.ca/macdonald/alumni/giving/CEC>) is being made possible through philanthropic contributions. Major contributions include the Lorna K. and J. William Ritchie Educational Hall (1M\$ donation) and the Alton and Murray McEwen Visitor Hub (500k\$ donation). Fundraising is ongoing to meet the \$8.5M goal. The University has assured bridge funding.

5. Réseau Express Métropolitain (REM)

The Réseau Express Métropolitain West Island branch is scheduled to be operational in late 2024. This will provide greater and faster connection between the McGill campuses all year round, almost all day-round, and at high frequency. This timeline offers McGill a two-year head-start to plan how to best profit from the REM's arrival. = Whether and how the REM will replace the current McGill shuttle needs to be assessed considering that the Sainte-Anne-de-Bellevue is not at walking distance from the campus and may necessitate a short distance feeder system. Discussions with external stakeholders will be needed.

ALIGNMENT WITH MISSION AND STRATEGIC PRIORITIES	Presentations of University Faculties apprise the Board of the University's academic priorities.
COMPLIANCE WITH UNIVERSITY POLICY	Faculty presentations are a regular feature on Board agendas.
COMPLIANCE WITH LEGISLATION/ EXTERNAL REGULATIONS	There are no external legislation requirements applicable.
RISK FACTORS	There are no risk factors applicable.
SUSTAINABILITY CONSIDERATIONS	N/A
IMPACT OF DECISION AND NEXT STEPS	N/A
MOTION OR RESOLUTION FOR APPROVAL	N/A
APPENDICES	Appendix A: Faculty of Agricultural and Environmental Sciences Updates to the Board of Governors



Updates to the Board of Governors

October 2022

- Deferred Maintenance
- New Teaching Greenhouse
- Clinical Nutrition Research Unit
- New Research & Innovation Pavilion
- Community Engagement Centre
- REM

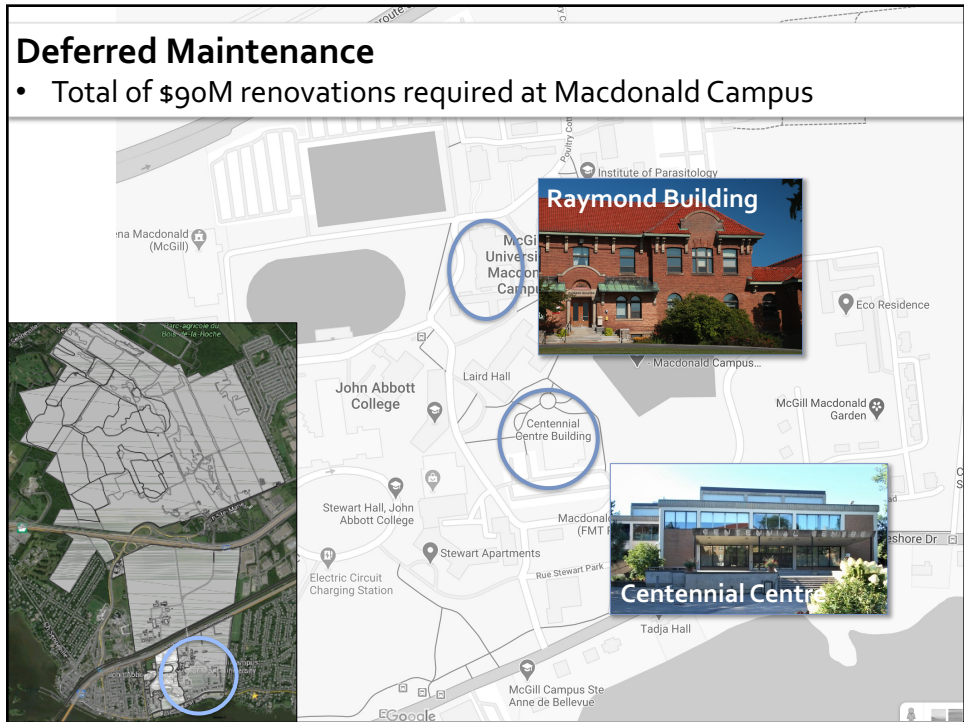
Faculty of Agricultural and Environmental Sciences



1

Deferred Maintenance

- Total of \$90M renovations required at Macdonald Campus



2



3

Clinical Nutrition Research Unit

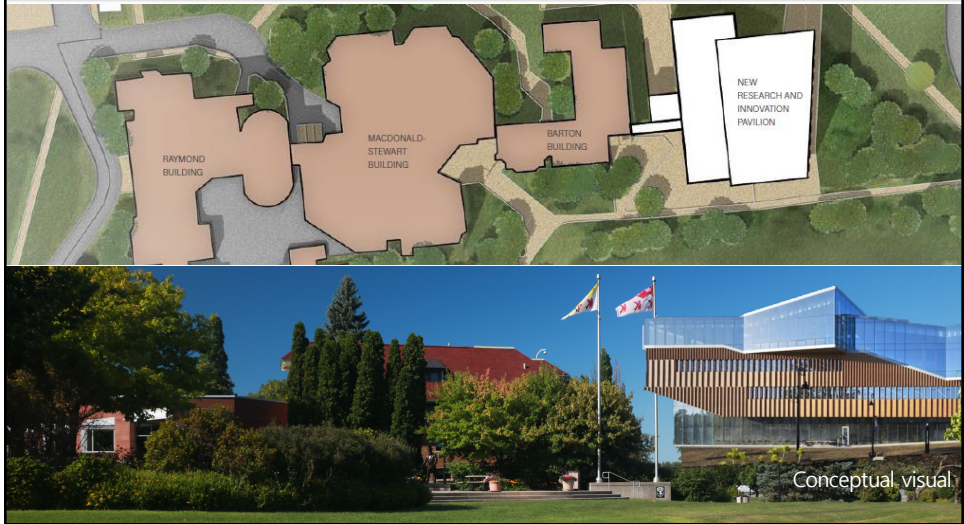
- Move from Maple Street to old postoffice in SAB
- Complete renovation done by owner
- Equipping the unit is a new fundraising focus



4

New Research & Innovation Pavilion

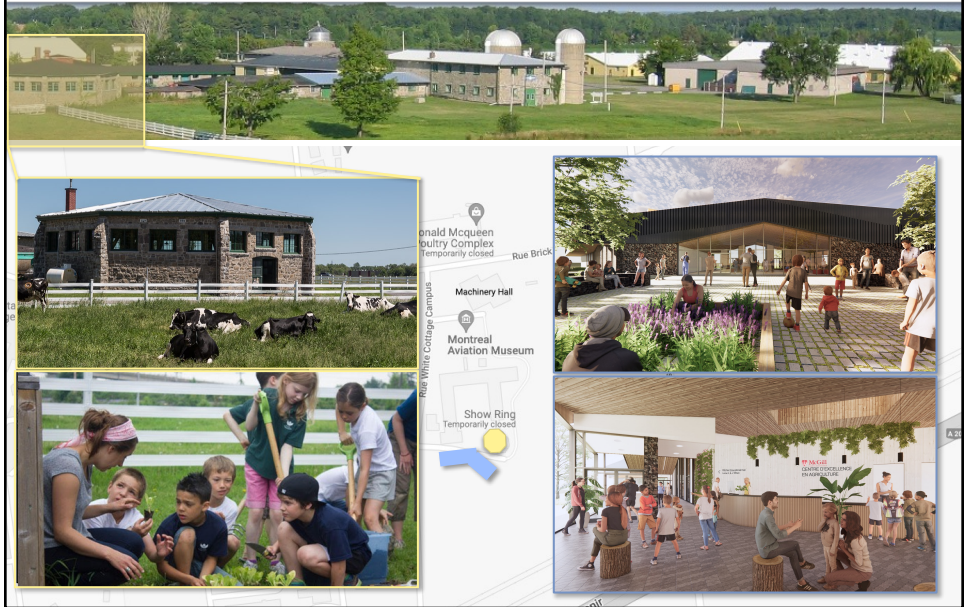
- Venue for the planned AES Smart Agri-Food Hub
- Core facilities, flex labs
- Class rooms, student services



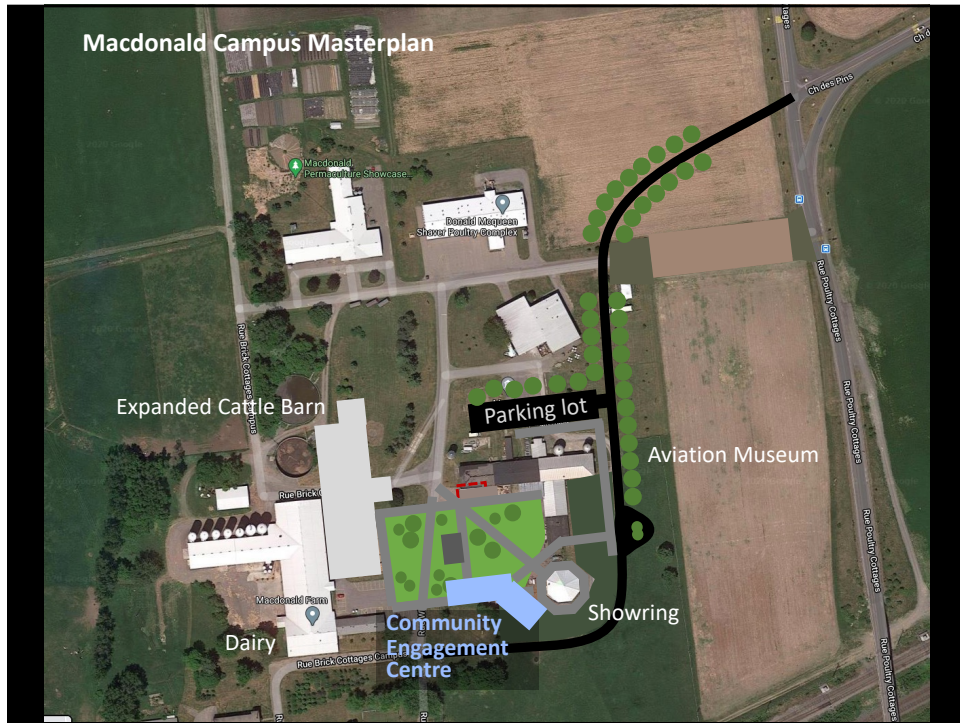
5

Community Engagement Centre

- Venue for hosting general public, school classes, camps, workshops



6



7

Réseau Express Métropolitain (REM)

- Planning for the impact of the REM on the connectivity between the McGill campuses
- Sainte-Anne-de-Bellevue branch to operate in 2024



Current:

- Mon-Fri, 7am-6pm
- 45 min interval
- semester only (minimal service in summer)



REM Schedule:

- 7 days, 20 hours/day, 9 min interval
- year-round

8

Réseau Express Métropolitain (REM)

- Planning for the impact of the REM on the connectivity between the McGill campuses
- Sainte-Anne-de-Bellevue branch to operate in 2024

Impact & Opportunities:

- ✓ university-wide
- ✓ students & staff
- ✓ general public (CEC!)
- ✓ requires conversation with:



REM Schedule:

- 7 days, 20 hours/day, 9 min interval
- year-round