

MCGILL UNIVERSITY

FACULTY OF ARTS



ARTS MULTIMEDIA LANGUAGE FACILITY (AMLF)

ANNUAL REPORT 2015

NATALLIA LIAKINA
DIRECTOR

MAY 2016

FACILITIES

Three multimedia labs



LAB 1	40 stations
Examinations Supervised Oral Training	Placement Tests Autonomous work
LAB 2	21 stations
Autonomous Work	Placement Tests
LAB 3	35 stations
Teaching and guided oral practice, group labs Exams and evaluations Introduction to the AMLF sessions French Placement Tests Presentation of multimedia projects Film screenings Conversation groups Workshop on Language Learning Tools for students	PhD Comprehensive Exams Autonomous practice Mercury course evaluations AMLF working group meetings Recording sessions Interviews: candidates' presentations Training sessions for language instructors (Can-8) Lab Assistants' orientation and meetings

The Help Desk is the assistants' work station.

The microlab or lab for research and creation of multimedia materials offers 5 stations reserved for language instructors, a color printer and a scanner. It is located on the third floor of the 688 Sherbrooke building (room 317).

▪ **USERS**

PROFESSORS

SEMESTER	NUMBER OF LANGAGES TAUGHT	NUMBER OF PROFESSORS	NUMBER OF COURSES	NUMBER OF SECTIONS (IN TERMS OF 3 CREDITS)
Winter 2015	5	19	14	32
Summer 2015	2	6	4	13
Fall 2015	4	21	16	42

STUDENTS

NUMBER OF STUDENTS WHO USED THE AMLF BY YEAR AND BY SEMESTER				
Year	Winter	Summer	Fall	Total
2015	1172	473	1580	3225

The Arts Multimedia Language Facility (AMLF) is part of the French Language Centre.

Since it began operating in 2001, the AMLF has been used for computer-assisted language teaching and learning by departments within the Faculty of Arts.

The AMLF has 100 workstations and offers the most recent language-learning technology to students and instructors within the Faculty of Arts.

In addition to one lab reserved for the autonomous work of students, we offer two other labs specifically adapted to language courses.

The main facilities of the AMLF are located in the McLennan Library building.

- **RESOURCES UPDATE**

- **CAN-8**

The material of the majority of language courses has been created and disseminated using CAN-8, which has been installed on the AMLF network for several years now. Access to CAN-8 is restricted to professors and students from language departments. The training of instructors is the responsibility of the Educational Technology Consultant, whereas the management of student accounts and the management of the system in terms of network and data storage are part of the computer technicians' responsibilities.



Two training sessions for language instructors took place in May and in August 2015: presentation on new features of Can-8 and an introduction to Can-8 for new instructors.

Can-8 at Redpath Library and at Faculty of Arts Computer Labs (since June 2015)

In order to accommodate Can-8 users outside of the AMLF regular hours, the software has been installed on computers at two new locations on campus.

Thanks to the generous collaboration of the McGill Humanities & Social Sciences Library and the Arts Undergraduate Society of McGill, CAN-8 is now available on 24 computers in the **Group Study Area of the Redpath Library Building**, main floor, and on 4 computers in room 315B of the **Ferrier Computer Lab**.

Since the number of licenses for CAN-8 is limited, students are able to log on to CAN-8 from outside the AMLF from Monday till Friday, from 6pm to 8am, and Saturday and Sunday only.

Number of hours

Whether it is in class, for tests or autonomous work, the number of hours spent using CAN-8 is significant: **578 hours or 65% of reservation time**. (See detailed statistics in appendix).

- **ANTIDOTE 8**

The latest version of Antidote has been installed on the AMLF computers in May 2015, so the users could benefit from numerous new features the software has to offer.



- **YABLA – Language immersion online for Spanish, French, German, Italian and Chinese**

Yabla is an online language immersion program that gives students of all skill levels the opportunity to practice their listening skills by watching authentic videos with interactive subtitles. During Fall 2015, all instructors and students of the language departments of the Faculty of Arts were invited to try this new language learning tool at no cost.



- **COMPUTERIZED PLACEMENT TEST**

- **LIMESURVEY PLACEMENT TEST FOR FRSL COURSES**

In 2015, *LimeSurvey* was used as a temporary means for evaluating the French level of students interested in taking FRSL courses at the FLC.

Trained assistants must be present during placement tests in order to monitor the labs and help the students with any technical problem they might have.

For security reasons, placement tests must be taken in the labs. The placement tests require at least two labs since the instructors need to evaluate the students' oral abilities in an isolated space. At the beginning of the school year, the labs are used to the fullest by the students taking the electronic version of the placement test. During the busiest period (end of August and beginning of September) we had to reserve another lab at the Ferrier building in addition to our three labs in order to accommodate all the students coming to take a placement test.

Number of hours

The number of hours reserved for the new *LimeSurvey* placement test for FRSL courses is significant. In 2015, French placement tests represented **165 hours or 18% of AMLF reservation time** (see detailed statistics in appendix).

- **PERSONNEL**

In 2015, the administration of the AMLF and its daily operations were managed by the Director, Natallia Liakina and the Educational Technology Consultant, Michael Butler.

Since the reorganization of administrative services within the Faculty of Arts and the rearrangement and centralization of IT Services, the back-up for technical support and operations in general is provided by different McGill employees who are not involved in the AMLF activities on a regular basis. Therefore, replacements during AMLF staff's vacation and sick leaves as well as in case of emergency require more arrangements and, occasionally, it is impossible to assure continuity and quality services during such periods.

Furthermore, the AMLF is gradually evolving from a traditional, static language lab into a language resource center that offers a wider range of language learning, teaching and research activities. To that effect, the AMLF would benefit from hiring a professional – an academic associate, a language learning technology expert - with a strong background in the field of e-learning and computer-/mobile-assisted language learning (CALL/MALL) to work on pedagogical projects involving educational technology and to support the AMLF Director in the strategic development of the lab.

In order to assist instructors and students during classes, exams, placement tests and autonomous work sessions, a team of **20 assistants** worked at the AMLF from January to December 2015 (see appendix). Since May 2015, they were actively involved in various projects, such as researching and testing of language teaching and learning applications, creating tutorials for the software we use at the AMLF, providing technical support for language instructors for classes and special events, and much more. The funds allocated for their salaries in the Faculty of Arts budget are insufficient. As a result, we weren't able to assure the presence of two lab attendants at the help desk at all times. Also, this year again, we had to significantly reduce the lab opening hours.

- **HIGHLIGHTS AND INITIATIVES**

- **AMLF Working Group**

The AMLF working group continued its activities during Winter 2015. The group members completed the evaluation and the comparative analysis of five authoring systems developed specifically for language teaching and learning (*Sanako 1200*, *Learning Branch*, *Robotel*, *Webswami*, *ReLANpro*), established a list of priorities for selecting a new authoring system for the AMLF, made its recommendation to the McGill Procurement Services and discussed potential topics and areas of research in CALL for professional development events planned for 2016.

- **AMLF Newsletter**

In order to improve the way in which we update and communicate with the McGill Community regarding AMLF activities, as well as the way in which we inform the McGill L2 community on new resources and professional development opportunities in the field of CALL, we continue to publish the AMLF newsletter twice a year and publish it on the AMLF website.

- **Language Learning Tools Workshops for Students**

This year, the AMLF offered its first Language Learning Tools Workshop for McGill students. This event was organized in collaboration with *LingoBuddies*, the McGill International Student Network's peer to peer language exchange service, and attracted 25 students from different faculties and schools.

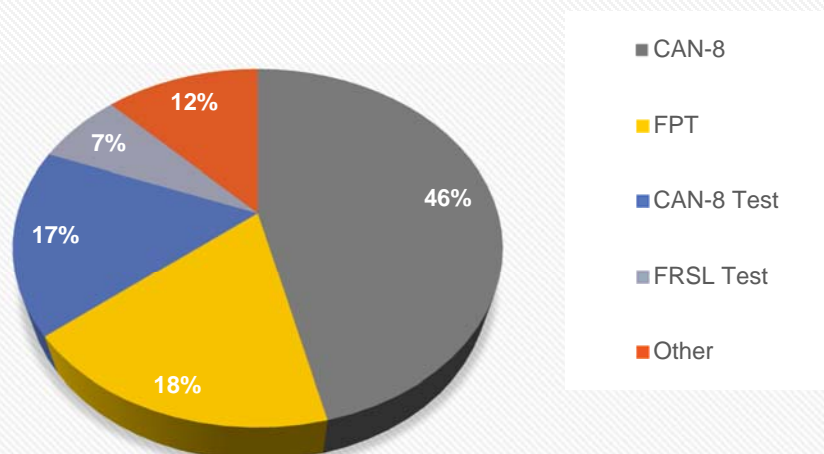
The workshop was prepared and animated by our lab assistants, McGill Undergraduate students Roman Celac, Thomas Tendron, and JbNam. The participants learned about and got the chance to try various web 2.0 tools and mobile applications for second/foreign language learning.

APPENDIX

ARTS MULTIMEDIA LANGUAGE FACILITY/ANNUAL REPORT/CHART 1.1

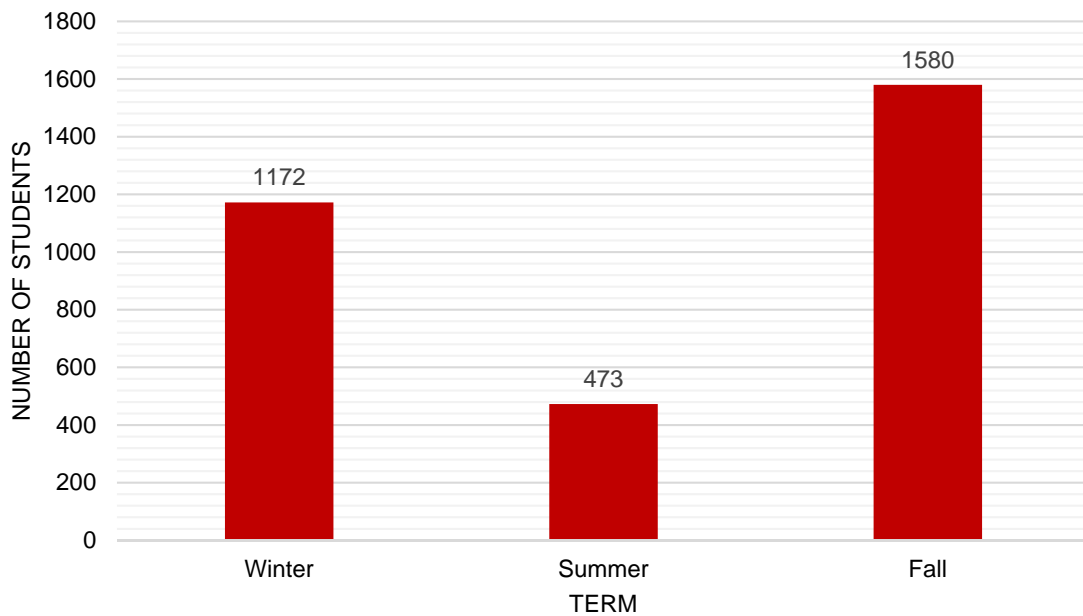
Reservation times for all labs by activity type

(January - December 2015)

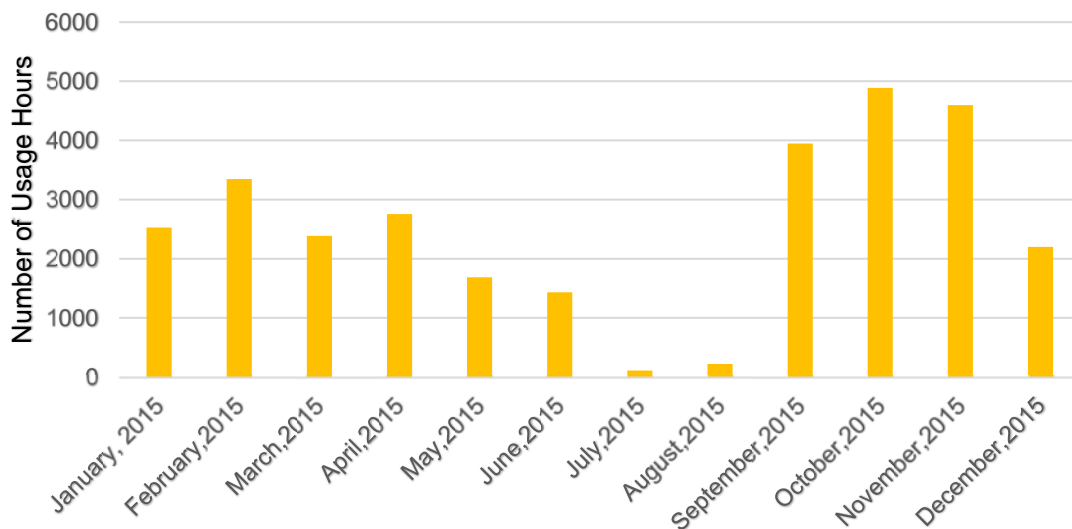


CODE	NUMBER OF RESERVATIONS	NUMBER OF HOURS	ACTIVITIES
CAN-8	368	424 hrs. 55 min.	Autonomous practice, group labs
FPT	63	164 hrs. 40 min.	French Placement Test / Tests de classement pour les cours FRSL
CAN-8 Test	57	154 hrs. 20 min.	Oral exams on CAN-8
FRSL Test	44	62 hrs. 25 min.	Exams and evaluations (myCourses, Faronics Insight, Antidote)
Other	93	112 hrs. 55 min.	Presentation of multimedia projects (French) Film screenings (French) Oral practice and conversation groups (Arabic) Introduction to the AMLF and training workshops (software and tools) AMLF working group meetings Interviews: candidate presentations PhD Comprehensive Exams, Department of Political Science, Faculty of Arts Lingo Buddies Workshop and planning meetings Lab Assistants' orientation Recording sessions for CAN-8 content Mercury course evaluations (Arabic)

ARTS MULTIMEDIA LANGUAGE FACILITY/ANNUAL REPORT/CHART 2.1
**Number of users who used the computers
at the AMLF**
(between January 2015 and December 2015)



ARTS MULTIMEDIA LANGUAGE FACILITY/ANNUAL REPORT/CHART 3.1
**Total usage hours of computers in the
AMLF per month**
(between January 2015 and December 2015)



2015 AMLF statistics	WINTER	SUMMER	FALL
Total reservations (hours : minutes)	304:10	100:15	490:45
Total lab users 2015	1172	473	1580
Total number of languages	5	2	4
Total number of profs	19	6	21
Total usage hours of computers	11015.89	3449.49	15634.96

Lab Assistants

January 2015 - December 2015

1. ARNEJA, Timardeep
2. ASSELIN-TOUSIGNANT, Kelly
3. BISCHOF, Marcus
4. CELAC, Roman
5. GRIFFITH, Peter
6. GU, Yu Qian (Gracie)
7. HÉBERT, Félix-Olivier
8. HYACINTHE, Huguet
9. IVANOV, Konstantin
10. LI, Zi Jun
11. NAM, Dongwoo (Jb)
12. NGUYEN, Duyen (Ivy)
13. PARK, Jinnie (Jinhee)
14. PELÁEZ SONÍ, Alejandra
15. PETIT-THORNE, Alexandria
16. PETTEM, Sarah
17. SUN, Yumeng
18. TENDRON, Thomas
19. WILLIAMS, Jérôme
20. YAP, Pei Qi (Chloe)

Statistics: Michael Butler, Educational Technology Consultant, AMLF
Sunny Galiza, Enterprise Desktop Administrator
Graphics: Timardeep Arneja, Lab Assistant, AMLF
Michael Butler, Educational Technology Consultant, AMLF

May 2015