

A line drawing of a building with a large dome and a flag on top. The building has multiple windows and a classical architectural style.

Future Graduate Students

*Why pursue your graduate
studies at McGill's Faculty
of Engineering?*



McGill University at a Glance (1)

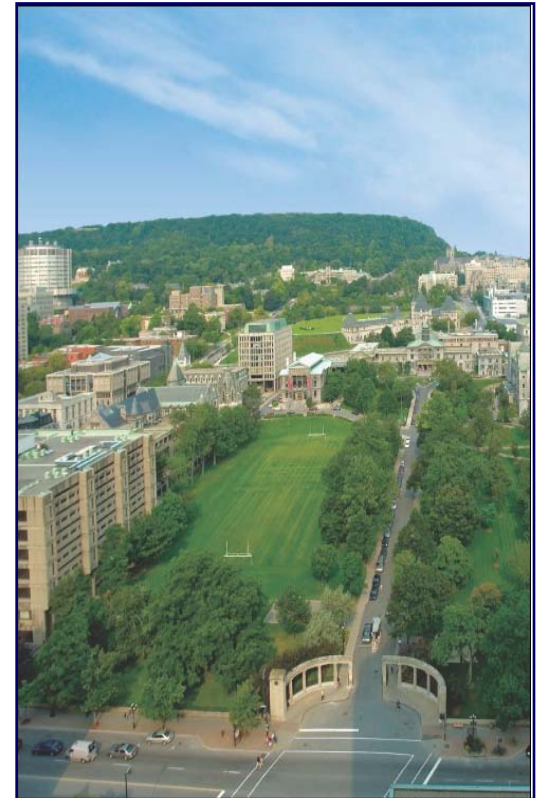


- Associated with
 - **8 Nobel laureates**
 - **2 Canadian prime ministers**
 - **128 Rhodes Scholars** (more than any Canadian university)
- **Ranked 19th** in the *QS World Universities* ranking, along with Harvard, Oxford, Cambridge and Yale
- **Ranked 18th** in the *U.S. News & World Report's* World's Best Universities rankings for 2010 (only Canadian University in top 20)
- Named **best public university in North America**
- Named Canada's **top medical-doctoral** university in *Maclean's* magazine's 2008 University Rankings issue



McGill University at a Glance (2)

- Students have the **highest average** entering grades of any Canadian university at 88.9%.
- International students comprise 19% of McGill's student body, making it the **most diverse in Canada**.
- **Graduate students** make up 22% of McGill's 35,300 students, the highest proportion among Canada's top ten research universities.
- On average full-time McGill professors **publish more peer-reviewed** articles than colleagues at any other Canadian university.

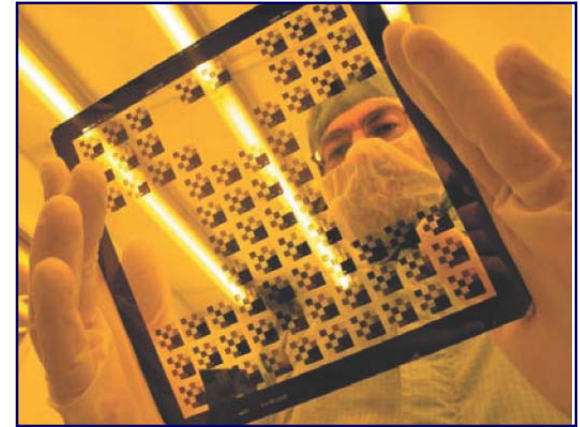




■ MCGILL ENGINEERING

Competes as one of the preeminent professional engineering schools in the world

Ranked 18th in *US News & World Report's* World's Best Universities 2010 Ranking: Engineering and IT category



McGill Nanotools microfab lab

■ WE ARE COMMITTED TO

- Producing self-reliant engineers who will become the leaders of tomorrow
- Defining the path of future discovery in engineering and technological research
- Making innovative, socially responsible contributions to the engineering community and society at large



Departments

- Chemical Engineering
- Civil Engineering
- Electrical & Computer Engineering
- Mechanical Engineering
- Mining & Materials Engineering

Schools

- Architecture
- Urban Planning

Institutes

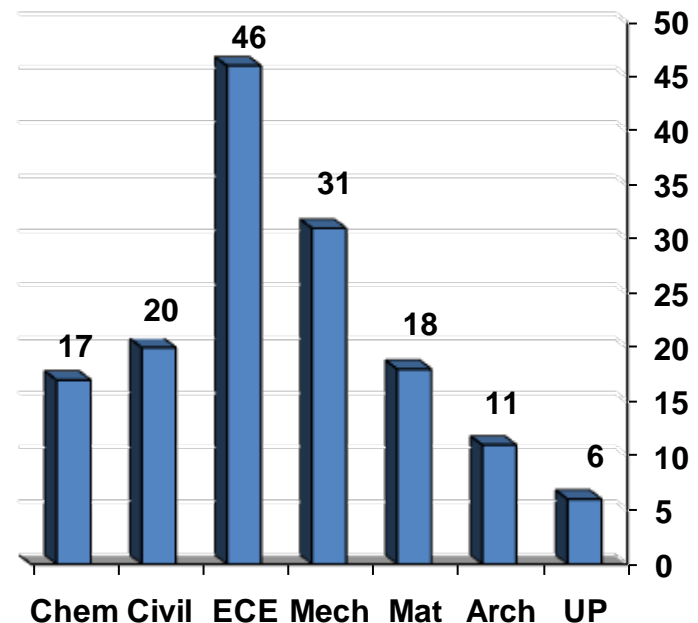
- McGill Institute for Advanced Materials (with Faculty of Science)
- McGill Institute for Aerospace Engineering
- Institute for Sustainability in Engineering and Design



ACADEMIC STAFF: 151



- 18 Canada Research Chairs
- 15 Dawson & McGill Chairs
- 5 NSERC Industrial Research Chairs
- 11 Named Chairs**
- 30 Assistant Professors (20%)
- 40 New Professors since 2004**
- 11 Searches Underway**





- A number of professors are Fellows of renowned scientific and professional societies (ASME, IEEE, OSA, CAE, RSC, ACI, etc.)
- Recent Faculty external recognition:
 - 2009 Killam Prize in Engineering – Professor Wagdi Habashi
 - 2007 Killam Prize in Engineering – Professor Patrick Selvadurai
 - 2006 Killam Prize in Engineering – Professor Rod Guthrie
 - 2008 NSERC Synergy Award – Professor James Finch
 - 2007 NSERC Award of Excellence – Professor John Jonas
 - 2006 NSERC Synergy Award, IEE Fellow – Professor David Plant



Mechanical Engineering graduate students perform Dust Combustion Experiments on board NASA KC-135 parabolic flight aircraft

■ Fall 2010 enrollment:

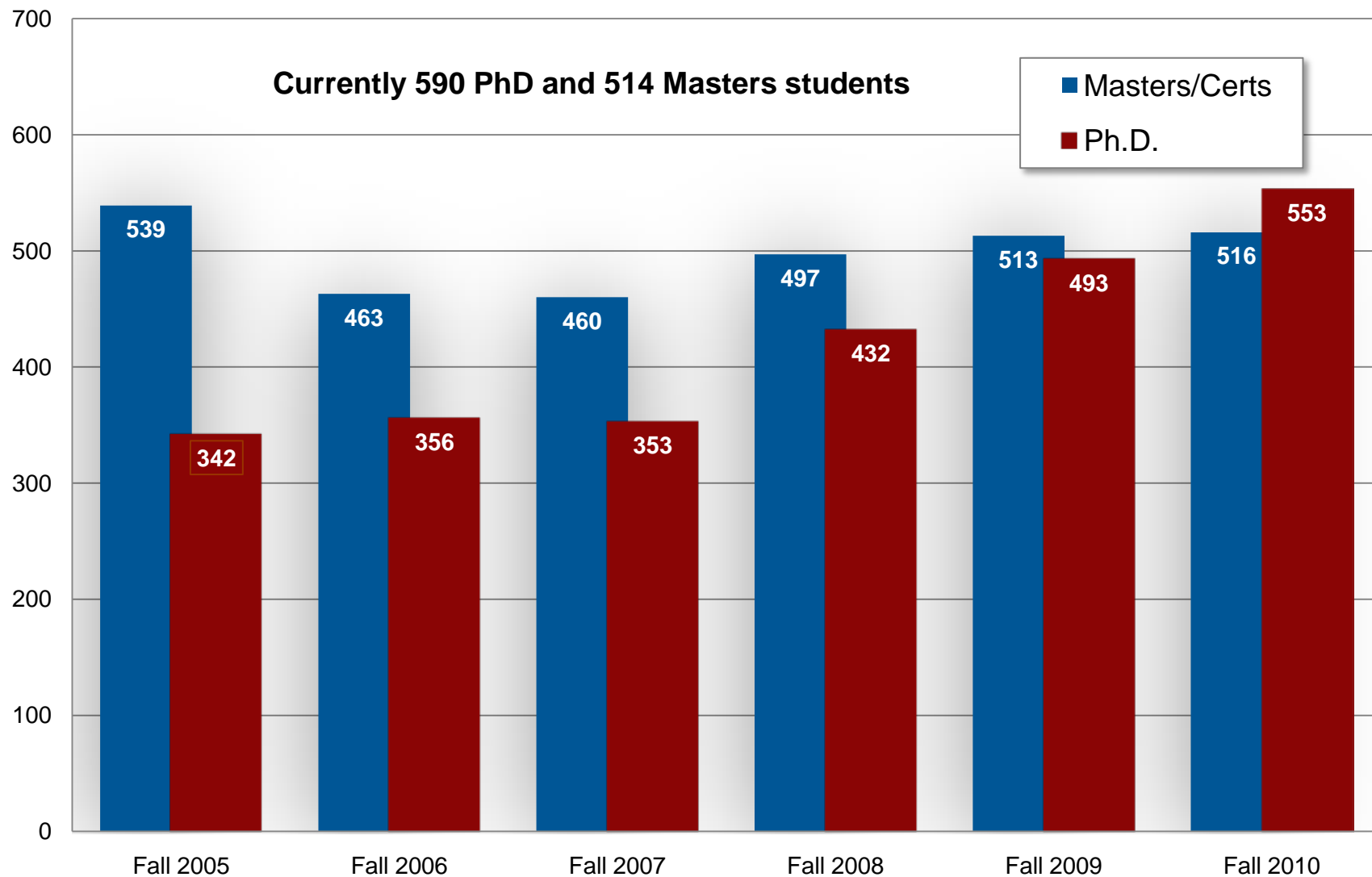
- 549 PhD students
- 516 Masters students
- 26% women, 63% Domestic, 37% international
- 96% increase in PhD applications over the last three years and 75% increase in new PhD registrations from 2007 to 2009

■ Objectives:

- Grow the **quality, quantity, and scope** of graduate programs
- Deploy plan for proactive international **recruitment** of top graduate talent
- Increase PhD enrollment **to 600 by 2011**
- Develop **Professional Master's** programs that target engineers already in the workforce who need to keep pace with technological advances



Graduate Enrollment Trend: Fall Terms





McGill Engineering Doctoral Award (MEDA) - Domestic

We offer the best and brightest new doctoral students fellowships in the amount of **\$24,000 to \$25,000 each year** over 3 academic years. All applicants are automatically considered for this award.

MEDA-Leveraged

Guaranteed top-up awards to all successful National Science and Engineering Research Council (NSERC) doctoral scholarship and FQRNT provincial scholarship recipients who apply and are accepted into the McGill Faculty of Engineering, on top of their agency awards.

Masters to PhD Fast-Track:

4 years of funding for high-calibre Canadian Masters students who plan to fast-track to a PhD program after 12 months in the Master program; minimum of **\$15,000 for 12 months** of Masters study and **\$24,000 each year** over 3 academic years of PhD study.

Masters Top-up Award

Guaranteed top-up awards to all successful NSERC (PGSM, CGSM), CIHR, SSHRC, FQRNT, FRSQ, and FQRSC Masters scholarship recipients in McGill Faculty of Engineering, on top of their agency awards, and corresponding to the duration of their external award.

Graduate Excellence Fellowships (GEF) - Engineering

Funding available to new and continuing Masters & PhD students, in support of their graduate studies.

Graduate Research Enhancement and Travel Award (GREAT Award)

Funding in support of graduate student travel to conferences and research-enhancement activities.

Many other Graduate Fellowships, Teaching Assistantships and Research Assistantships are available.



McGill Engineering Doctoral Award (MEDA) - International

We offer the best and brightest new international doctoral students fellowships in the amount of **\$32,000 each year** over 3 academic years (includes \$8,000 towards the cost of the international PhD tuition supplement). All applicants are automatically considered for this award.

McGill Engineering International Tuition Award (MEITA) –Engineering Departments

This award provides competitive recruitment funding that contributes to the cost of the international PhD tuition supplement fee. In addition to minimum funding of \$19,000 a year provided by the supervisor or Department, the Faculty of Engineering offers a MEITA award of **\$8,000** towards the international PhD supplement fee, for a total funding package of **at least \$27,000**. This award is for one year and up to a duration of 3 years. Candidates are automatically considered during the PhD application process.

- Applicants to the Schools of Architecture and Urban Planning should contact the Schools for information on equivalent programs available through the Schools.

Graduate Excellence Fellowships (GEF) - Engineering

Funding available to new and continuing Masters & PhD students, in support of their graduate studies.

Graduate Research Enhancement and Travel Award (GREAT Award)

Funding in support of graduate student travel to conferences and research-enhancement activities.

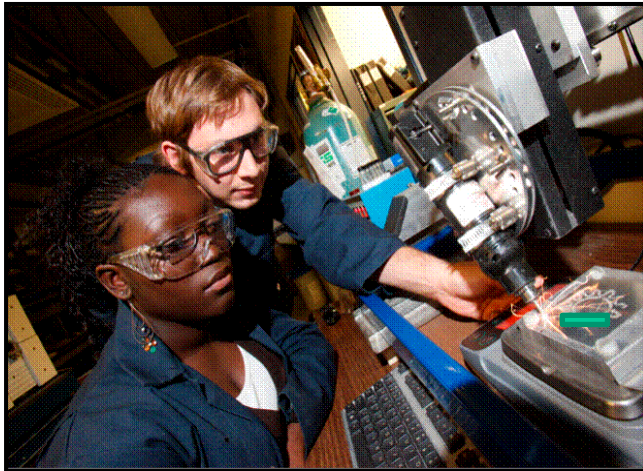
Masters students

Various fellowships of \$1,500 to \$10,000 available to high-calibre international masters students. All applicants are automatically considered for these awards.

Many other Graduate Fellowships, Teaching Assistantships and Research Assistantships are available.



Strategic research areas



Advanced Materials and Nanotechnology



Aerospace Engineering



Bioengineering



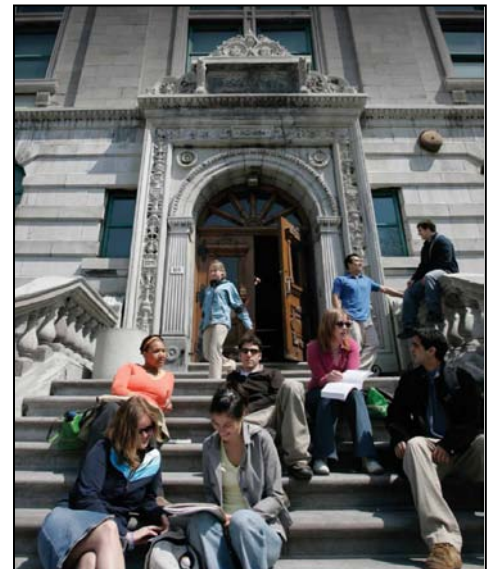
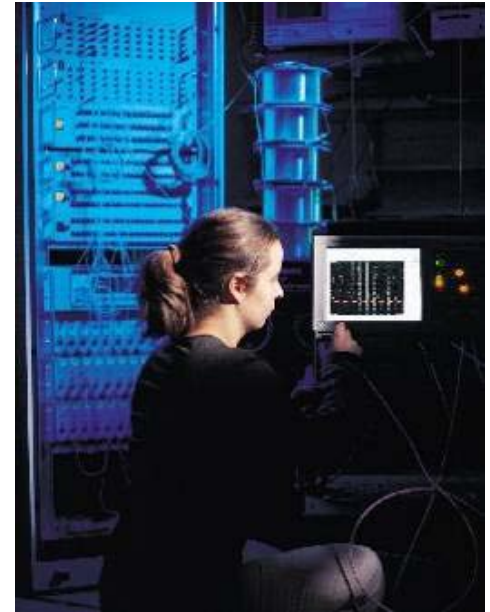
Engineering and Design for Sustainability



Broadband Communications



- **McGill:** one of the world's best universities
- Exciting and dynamic engineering research programs under the guidance of world-leading researchers
- Location: Vibrant, multicultural Montreal
- Competitive graduate funding programs
 - McGill Engineering Doctoral Award (Domestic): \$24,000 to \$25,000 for high-calibre PhD candidates
 - Top-ups for NSERC (CGS, PGS) & FQRNT masters and doctoral scholarship winners
 - Funding for high-calibre Canadian Masters to PhD Fast-track students
 - Graduate Excellence Fellowships: Funding for new and continuing Masters and PhD students
 - GREAT Award: Funding in support of graduate student travel to conferences and research enhancement activities.





For more information about GRADUATE STUDIES

In the Faculty of Engineering, please contact:

Dr. Chidinma Offoh-Robert

Administrator for Research and Graduate Education

Faculty of Engineering

McGill University

Email:	<u>research.engineering@McGill.ca</u>
Tel:	+1 (514) 398-2913
Visit:	<u>www.mcgill.ca/engineering/graduate</u>
Other Information:	<u>www.mcgill.ca/gradapplicants</u>